

Anti-Glutamate decarboxylase 1 Recombinant Rabbit Monoclonal Antibody



Catalog #: 2002

Aliases

GAD1; Glutamate Decarboxylase 1; GAD; Glutamate Decarboxylase 1 (Brain, 67kDa); 67 KDa Glutamic Acid Decarboxylase; EC 4.1.1.15; GAD-67; Glutamate Decarboxylase 1 (Brain, 67kD); Glutamate Decarboxylase 67 KDa Isoform; EC 4.1.; CPSQ1; DEE89; GAD67; SCP

Background

Gene Name: GAD1

NCBI Gene Entry: [2571](#)

UniProt Entry: [Q99259](#)

Application Information

Molecular Weight: Predicted, 67 kDa; observed, 67 kDa

Clonality: Rabbit monoclonal antibody

Clone ID: 23GB5510

Species Reactivity: Human, mouse, rat

Applications Tested: Western blotting (WB), immunocytochemistry (IC), flow cytometry (FCM)

Immunogen

A synthesized peptide derived from human GAD67

Isotype

Rabbit IgG

Storage Buffer

Supplied in PBS (pH 7.4) containing 50% glycerol, and 0.02% sodium azide.

Storage

Store at -20 °C for one year.

Recommended Dilutions

Western Blotting (WB): 1:1,000-1:5,000

Immunocytochemistry (IC): 1:100-1:1,000

Flow Cytometry (FCM): 1:2,000

Note: This product is for research use only.

SUPPORT

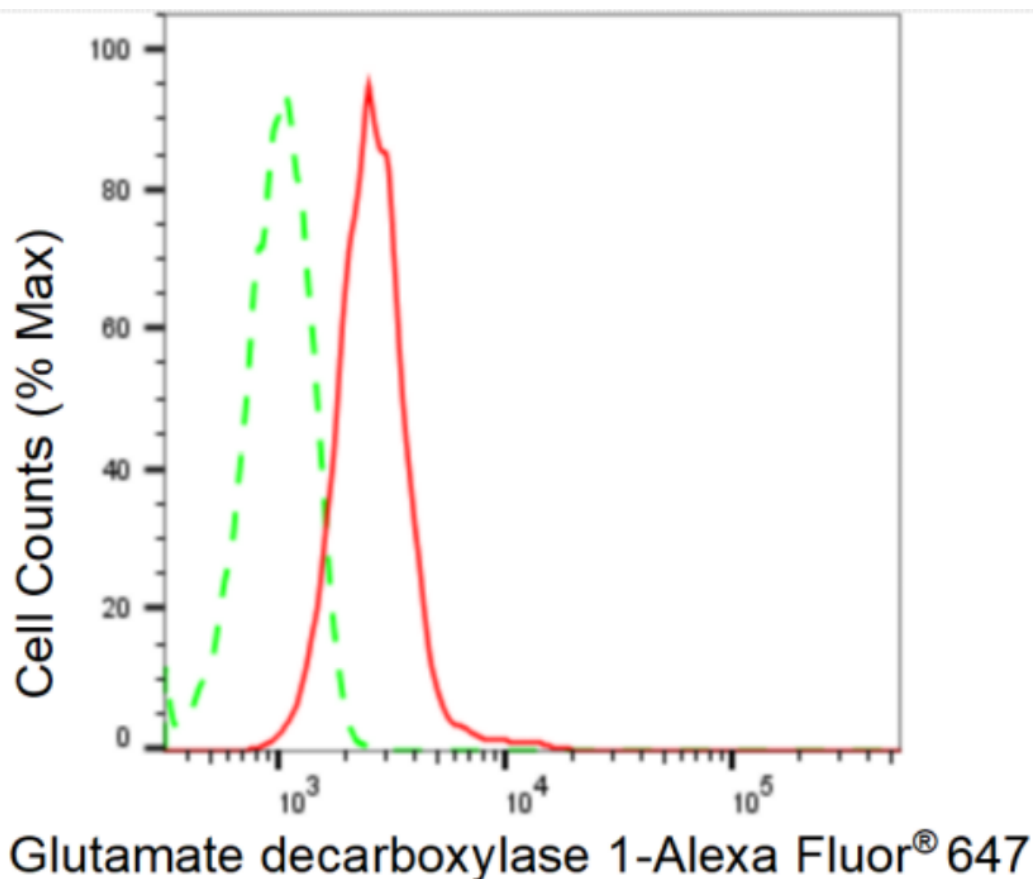
SUPPORT@GENUINBIOTECH.COM
TEL: +1-540-855-7041

ORDERS

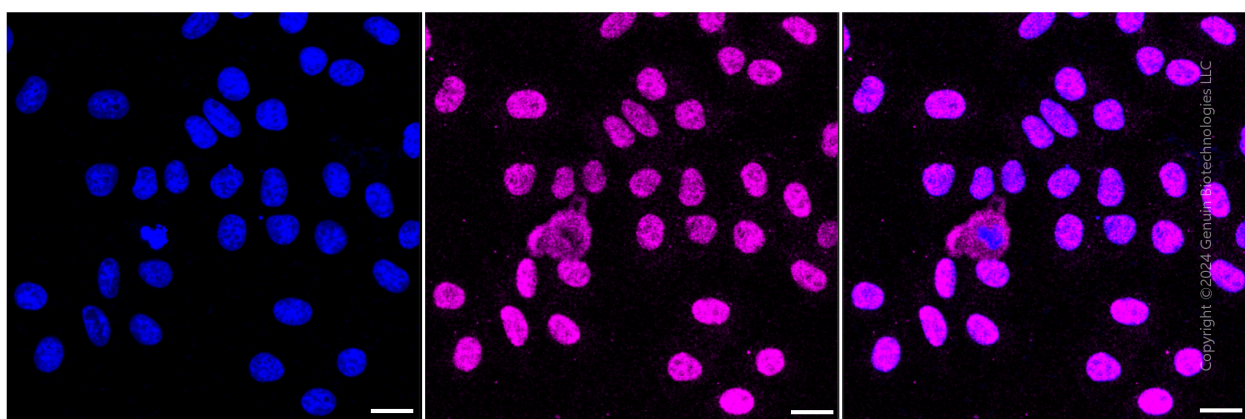
SALES@GENUINBIOTECH.COM
FAX: +1-540-855-7041

WWW.GENUINBIOTECH.COM

Validation Data



Flow cytometric analysis of Glutamate decarboxylase 1 expression in HepG2 cells using Glutamate decarboxylase 1 antibody (Cat#2002, 1:2,000). Green, isotype control; red, Glutamate decarboxylase 1.



Immunocytochemical staining of HepG2 cells with anti-Glutamate decarboxylase 1 antibody (Cat#2002, 1:1,000). Nuclei were stained blue with DAPI; Glutamate decarboxylase 1 was stained magenta with Alexa Fluor® 647. Images were taken using Leica stellaris 5. Protein abundance based on laser Intensity and smart gain: Medium. Scale bar: 20 μ m.

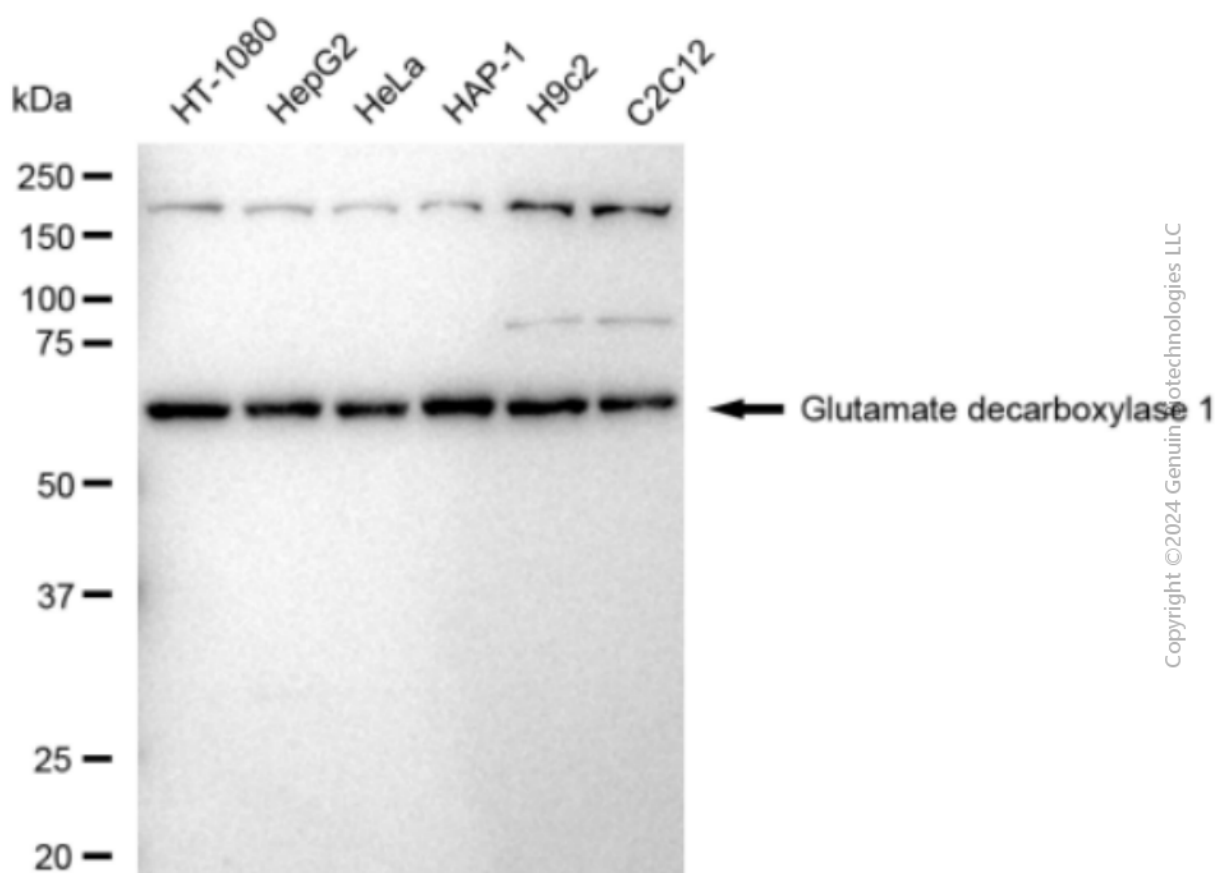
SUPPORT

SUPPORT@GENUINBIOTECH.COM
TEL: +1-540-855-7041

ORDERS

SALES@GENUINBIOTECH.COM
FAX: +1-540-855-7041

WWW.GENUINBIOTECH.COM



Western blotting analysis using anti-Glutamate decarboxylase 1 antibody (Cat#2002). Total cell lysates (30 μ g) from various cell lines were loaded and separated by SDS-PAGE. The blot was incubated with anti-Glutamate decarboxylase 1 antibody (Cat#2002, 1:5,000) and HRP-conjugated goat anti-rabbit secondary antibody (Cat#201, 1:20,000) respectively. Image was developed using FeQ™ ECL Substrate Kit (Cat#226).