

Anti-Guanylate binding protein 1 Recombinant Rabbit Monoclonal Antibody



Catalog #: 2006

Aliases

GBP1; Guanylate Binding Protein 1; Guanylate Binding Protein 1, Interferon-Inducible, 67kDa; Interferon-Induced Guanylate-Binding Protein 1; Guanine Nucleotide-Binding Protein 1; Guanylate-Binding Protein 1; GTP-Binding Protein 1; HuGBP-1; HGBP1; GBP-1; Guanylate Binding Protein 1, Interferon-Inducible; EC 3.6.1.-; EC 3.6.5.-

Background

Gene Name: GBP1

NCBI Gene Entry: [2633](#)

UniProt Entry: [P32455](#)

Application Information

Molecular Weight: Predicted, 68 kDa; observed, 68 kDa

Clonality: Rabbit monoclonal antibody

Clone ID: 23GB5530

Species Reactivity: Human, mouse

Applications Tested: Western blotting (WB), flow cytometry (FCM), immunocytochemistry (IC)

Immunogen

A synthesized peptide derived from human GBP1

Isotype

Rabbit IgG

Storage Buffer

Supplied in PBS (pH 7.4) containing 50% glycerol, and 0.02% sodium azide.

Storage

Store at -20 °C for one year.

Recommended Dilutions

Western Blotting (WB): 1:1,000-1:5,000

Flow Cytometry (FCM): 1:2,000

Immunocytochemistry (IC): 1:100-1:1,000

SUPPORT

SUPPORT@GENUINBIOTECH.COM
TEL: +1-540-855-7041

ORDERS

SALES@GENUINBIOTECH.COM
FAX: +1-540-855-7041

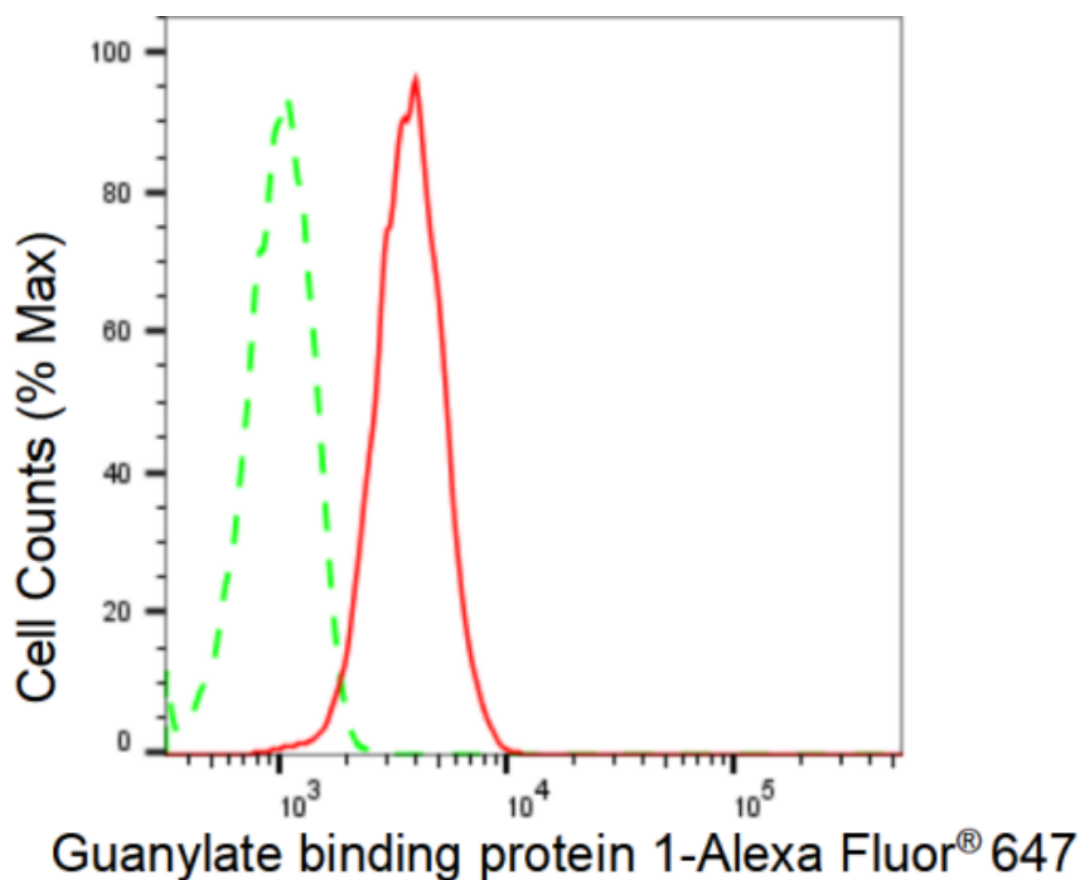
WWW.GENUINBIOTECH.COM

Anti-Guanylate binding protein 1 Recombinant Rabbit Monoclonal Antibody

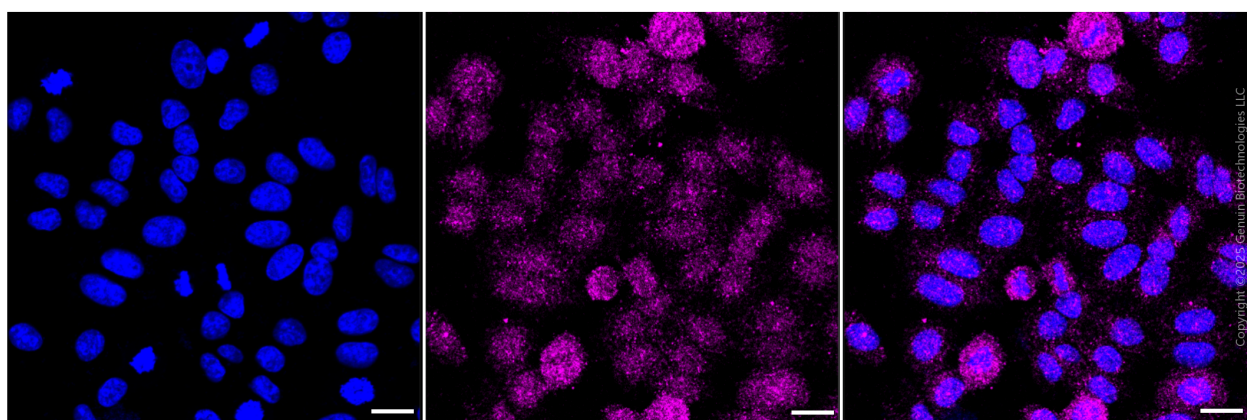
PAGE 2

Note: This product is for research use only.

Validation Data



Flow cytometric analysis of Guanylate binding protein 1 expression in HepG2 cells using Guanylate binding protein 1 antibody (Cat#2006, 1:2,000). Green, isotype control; red, Guanylate binding protein 1.



Immunocytochemical staining of HepG2 cells with anti-Guanylate binding protein 1 antibody (Cat#2006, 1:1,000). Nuclei were stained blue with DAPI; Guanylate binding protein 1 was

SUPPORT

SUPPORT@GENUINBIOTECH.COM
TEL: +1-540-855-7041

ORDERS

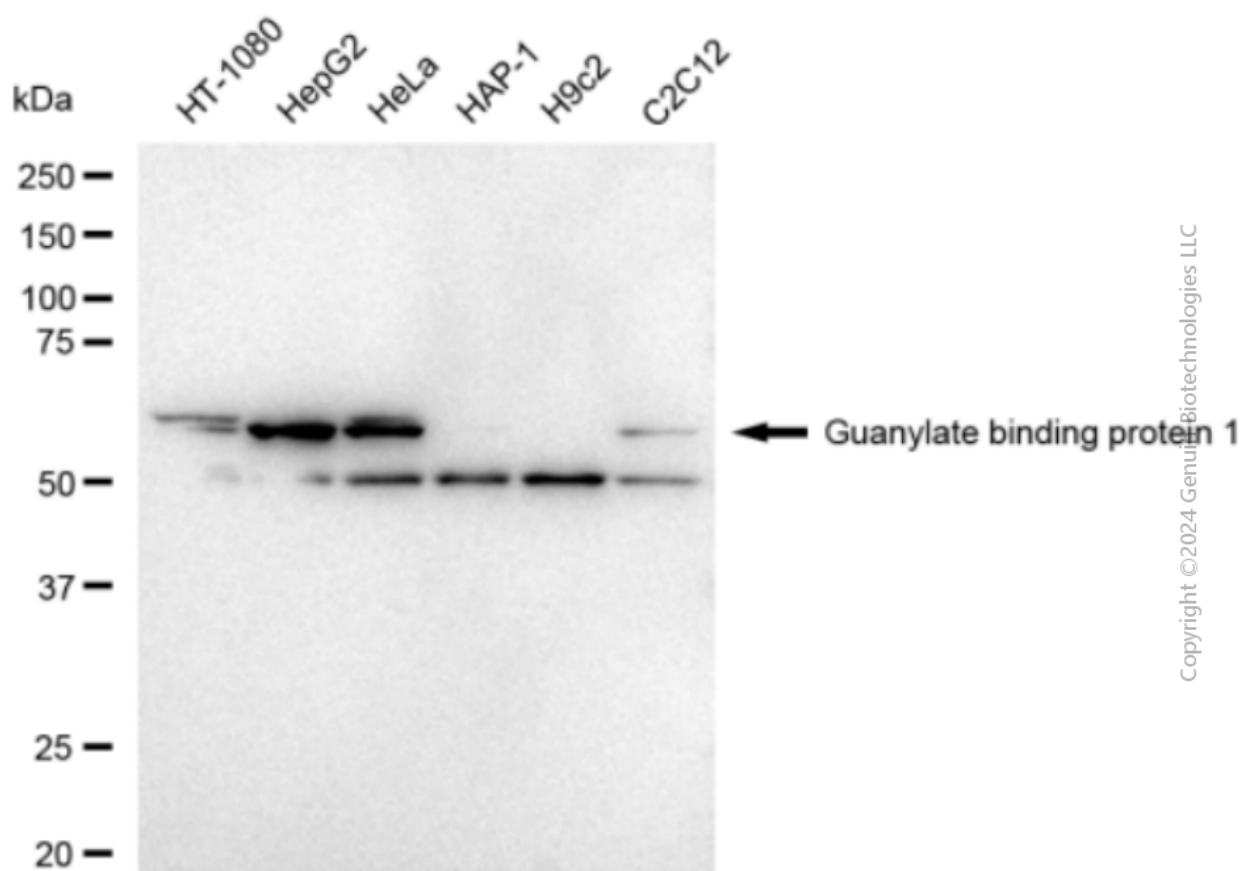
SALES@GENUINBIOTECH.COM
FAX: +1-540-855-7041

WWW.GENUINBIOTECH.COM

Anti-Guanylate binding protein 1 Recombinant Rabbit Monoclonal Antibody

PAGE 3

stained magenta with Alexa Fluor® 647. Images were taken using Leica stellaris 5. Protein abundance based on laser Intensity and smart gain: Low. Scale bar, 20 µm.



Western blotting analysis using anti-Guanylate binding protein 1 antibody (Cat#2006). Total cell lysates (30 µg) from various cell lines were loaded and separated by SDS-PAGE. The blot was incubated with anti-Guanylate binding protein 1 antibody (Cat#2006, 1:5,000) and HRP-conjugated goat anti-rabbit secondary antibody (Cat#201, 1:20,000) respectively. Image was developed using FeQ™ ECL Substrate Kit (Cat#226).

SUPPORT

SUPPORT@GENUINBIOTECH.COM
TEL: +1-540-855-7041

ORDERS

SALES@GENUINBIOTECH.COM
FAX: +1-540-855-7041

WWW.GENUINBIOTECH.COM