

# Anti-GLI1 Recombinant Rabbit Monoclonal Antibody



**Catalog #: 2010**

## Aliases

GLI1; GLI Family Zinc Finger 1; GLI; Glioma-Associated Oncogene Homolog 1 (Zinc Finger Protein); Zinc Finger Protein GLI1; Oncogene GLI; Glioma-Associated Oncogene Family Zinc Finger 1; GLI-Kruppel Family Member GLI1; Glioma-Associated Oncogene 1; Glioma-Associated Oncogene; PAPA8; PPD1

## Background

Gene Name: GLI1

NCBI Gene Entry: [2735](#)

UniProt Entry: [P08151](#)

## Application Information

Molecular Weight: Predicted, 118 kDa; observed, 160 kDa

Clonality: Rabbit monoclonal antibody

Clone ID: 23GB5550

Species Reactivity: Human, mouse, rat

Applications Tested: Western blotting (WB), flow cytometry (FCM), immunocytochemistry (IC)

## Immunogen

A synthesized peptide derived from human Gli1

## Isotype

Rabbit IgG

## Storage Buffer

Supplied in PBS (pH 7.4) containing 50% glycerol, and 0.02% sodium azide.

## Storage

Store at -20 °C for one year.

## Recommended Dilutions

Western Blotting (WB): 1:1,000-1:5,000

Flow Cytometry (FCM): 1:2,000

Immunocytochemistry (IC): 1:100-1:1,000

---

### SUPPORT

SUPPORT@GENUINBIOTECH.COM  
TEL: +1-540-855-7041

### ORDERS

SALES@GENUINBIOTECH.COM  
FAX: +1-540-855-7041

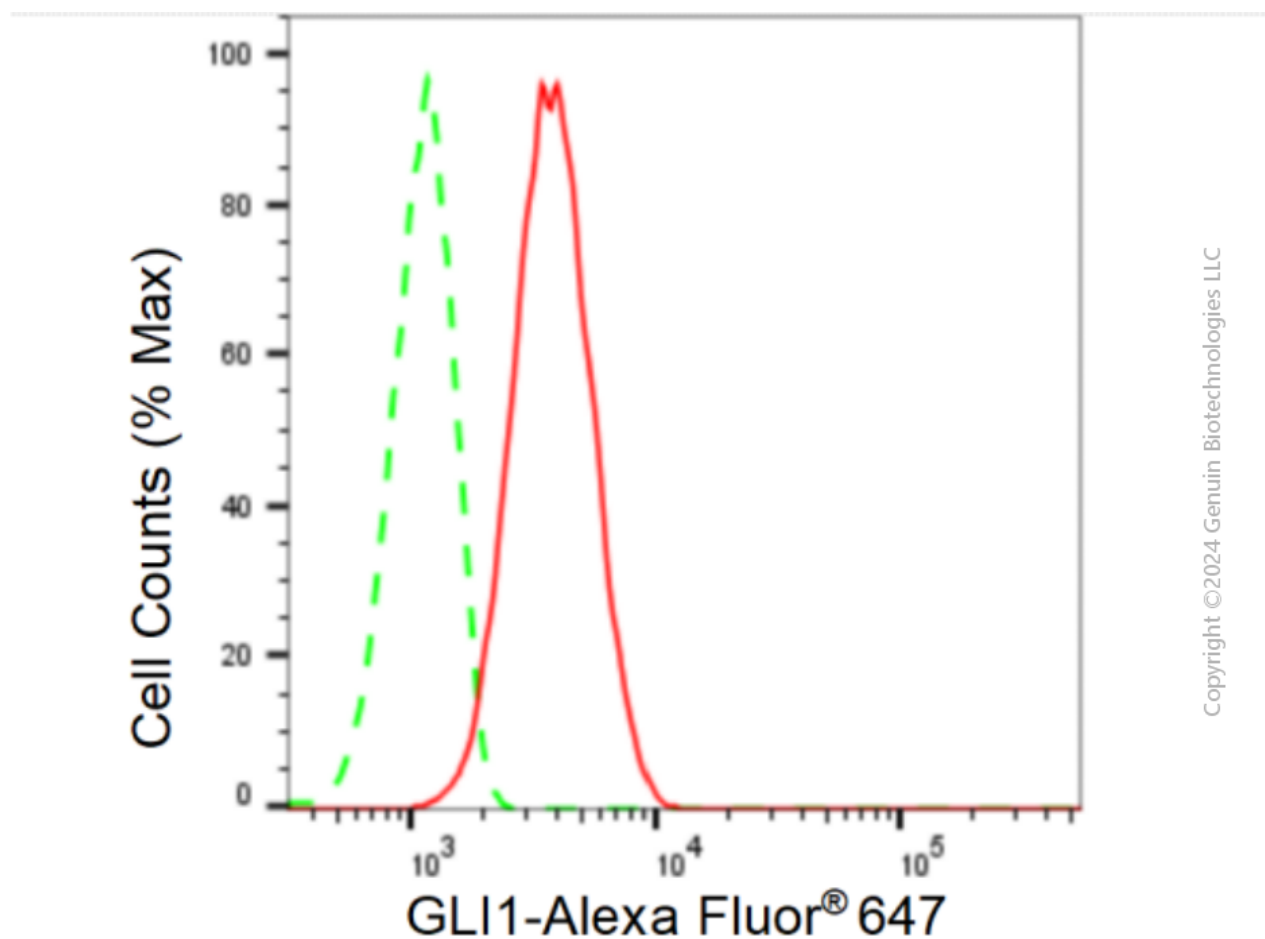
[WWW.GENUINBIOTECH.COM](http://WWW.GENUINBIOTECH.COM)

# Anti-GLI1 Recombinant Rabbit Monoclonal Antibody

PAGE 2

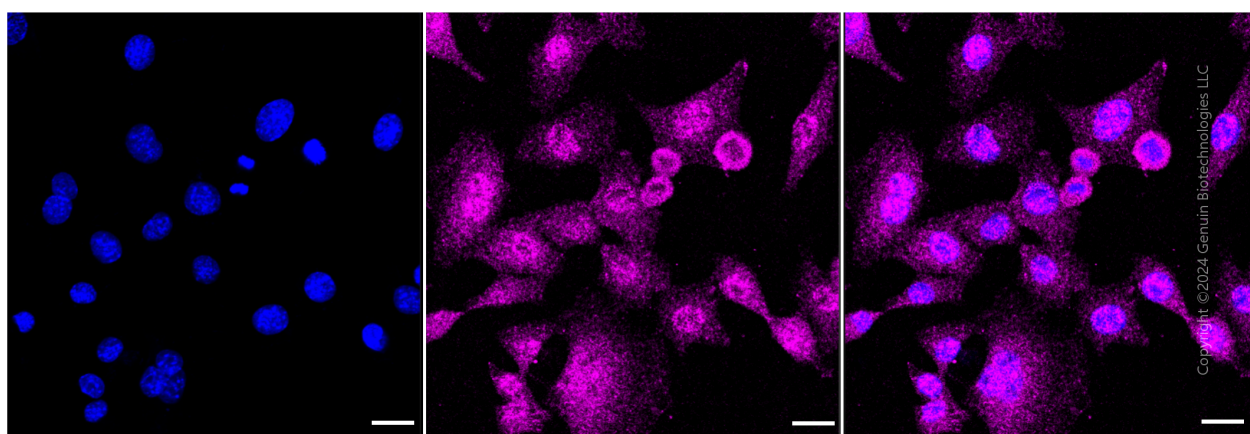
**Note:** This product is for research use only.

## Validation Data



Copyright ©2024 Genuin Biotechnologies LLC

Flow cytometric analysis of GLI1 expression in C2C12 cells using GLI1 antibody (2010, 1:2,000). Green, isotype control; red, GLI1.



Copyright ©2024 Genuin Biotechnologies LLC

Immunocytochemical staining of C2C12 cells with anti-GLI1 antibody (Cat#2010, 1:1,000). Nuclei were stained blue with DAPI; GLI1 was stained magenta with Alexa Fluor® 647. Images

### SUPPORT

SUPPORT@GENUINBIOTECH.COM  
TEL: +1-540-855-7041

### ORDERS

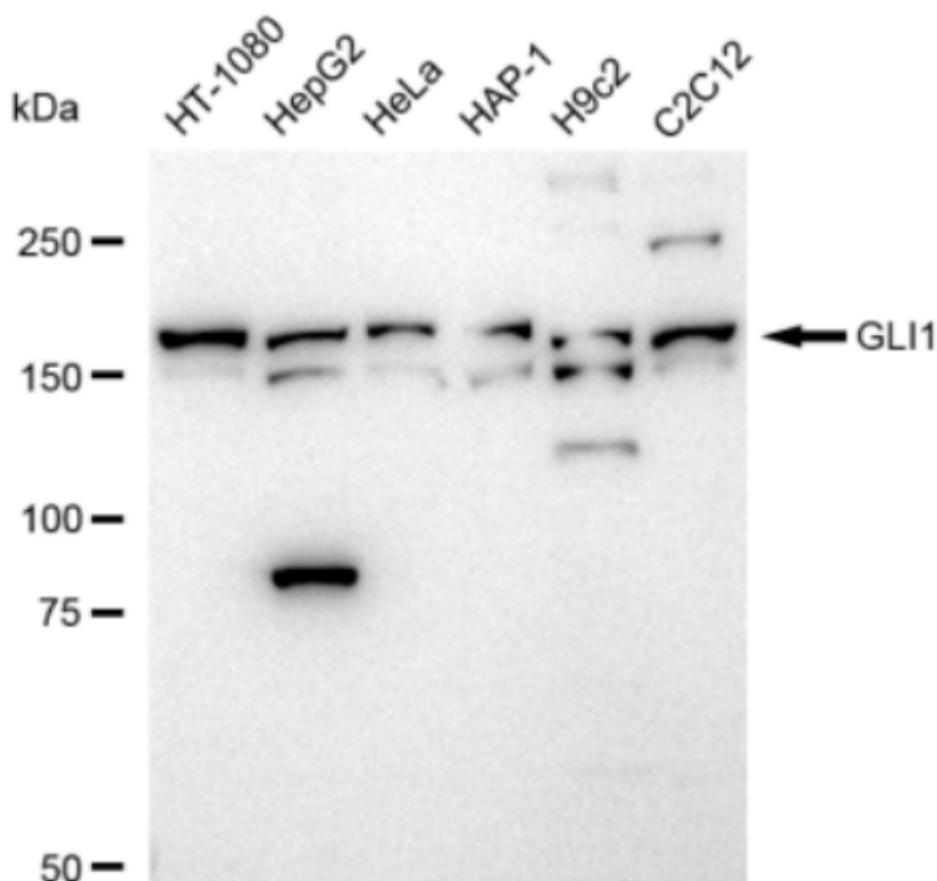
SALES@GENUINBIOTECH.COM  
FAX: +1-540-855-7041

[WWW.GENUINBIOTECH.COM](http://WWW.GENUINBIOTECH.COM)

## Anti-GLI1 Recombinant Rabbit Monoclonal Antibody

PAGE 3

were taken using Leica stellaris 5. Protein abundance based on laser Intensity and smart gain: Medium. Scale bar: 20  $\mu$ m.



Copyright ©2024 Genuin Biotechnologies LLC

Western blotting analysis using anti-GLI1 antibody (Cat#2010). Total cell lysates (30  $\mu$ g) from various cell lines were loaded and separated by SDS-PAGE. The blot was incubated with anti-GLI1 antibody (Cat#2010, 1:5,000) and HRP-conjugated goat anti-rabbit secondary antibody (Cat#201, 1:20,000) respectively. Image was developed using FeQ™ ECL Substrate Kit (Cat#226).

### SUPPORT

SUPPORT@GENUINBIOTECH.COM  
TEL: +1-540-855-7041

### ORDERS

SALES@GENUINBIOTECH.COM  
FAX: +1-540-855-7041

[WWW.GENUINBIOTECH.COM](http://WWW.GENUINBIOTECH.COM)