

# Anti-GNE Recombinant Rabbit Monoclonal Antibody



## Catalog #: 2012

### Aliases

GNE; Glucosamine (UDP-N-Acetyl)-2-Epimerase/N-Acetylmannosamine Kinase; Bifunctional UDP-N-Acetylglucosamine 2; Epimerase/N-Acetylmannosamine Kinase; UDP-GlcNAc-2-Epimerase/ManAc Kinase; GLCNE; Uae1; IBM2; UDP-N-Acetylglucosamine-2-Epimerase/N-Acetylmannosamine Kinase; UDP-N-Acetylglucosamine 2-Epimerase/N-Acetylmannosamine Kinase; N-Acylmannosamine Kinase; DMRV; UAE1; NM

### Background

Gene Name: GNE

NCBI Gene Entry: [10020](#)

UniProt Entry: [Q9Y223](#)

### Application Information

Molecular Weight: Predicted, 79 kDa; observed, 75 kDa

Clonality: Rabbit monoclonal antibody

Clone ID: 23GB5560

Species Reactivity: Human, mouse

Applications Tested: Western blotting (WB), flow cytometry (FCM), immunocytochemistry (IC)

### Immunogen

A synthesized peptide derived from human GNE

### Isotype

Rabbit IgG

### Storage Buffer

Supplied in PBS (pH 7.4) containing 50% glycerol, and 0.02% sodium azide.

### Storage

Store at -20 °C for one year.

### Recommended Dilutions

Western Blotting (WB): 1:1,000-1:5,000

Flow Cytometry (FCM): 1:2,000

Immunocytochemistry (IC): 1:100-1:1,000

---

#### SUPPORT

SUPPORT@GENUINBIOTECH.COM  
TEL: +1-540-855-7041

#### ORDERS

SALES@GENUINBIOTECH.COM  
FAX: +1-540-855-7041

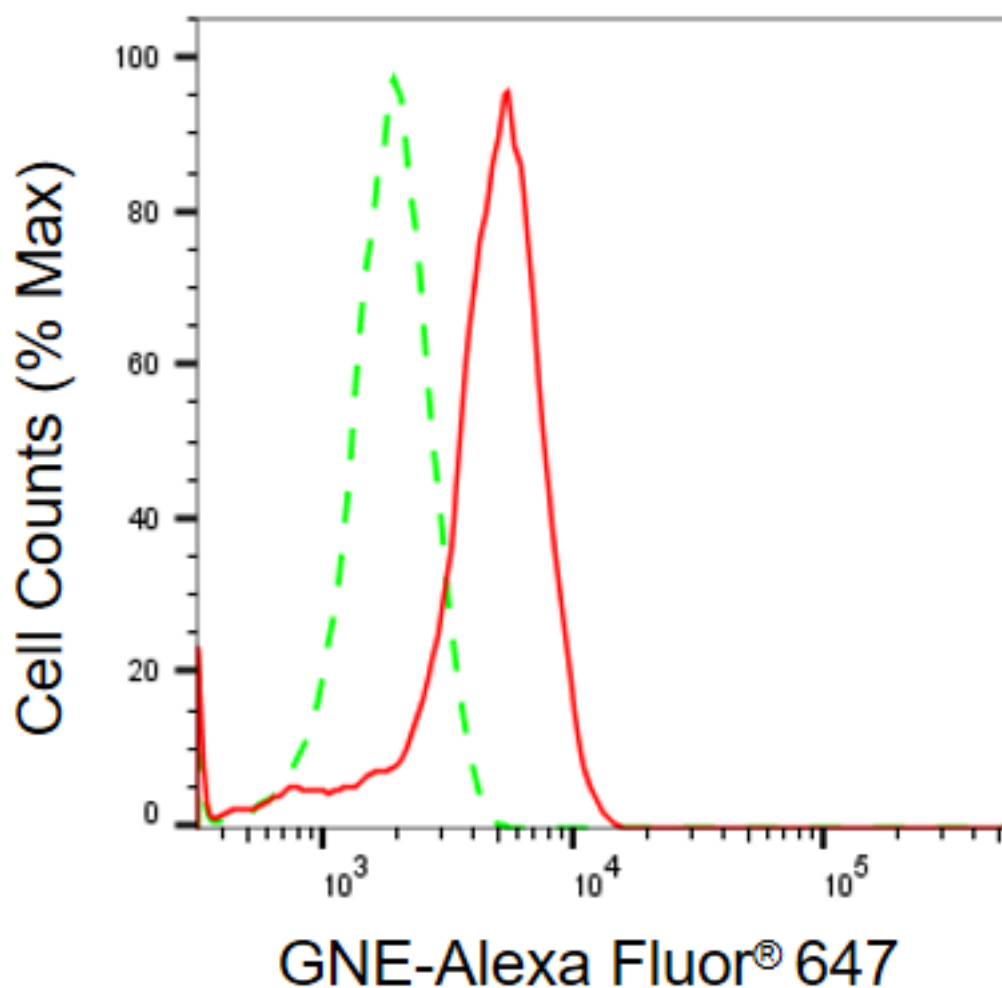
[WWW.GENUINBIOTECH.COM](http://WWW.GENUINBIOTECH.COM)

# Anti-GNE Recombinant Rabbit Monoclonal Antibody

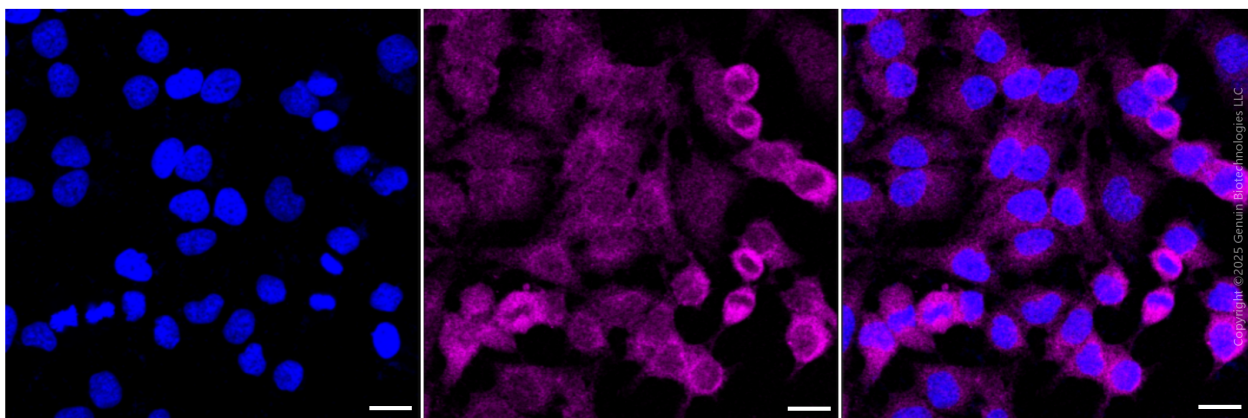
PAGE 2

**Note:** This product is for research use only.

## Validation Data



Flow cytometric analysis of GNE expression in HeLa cells using anti-GNE antibody (Cat#2012, 1 $\mu$ g/2000). Green, isotype control; red, GNE.



### SUPPORT

SUPPORT@GENUINBIOTECH.COM  
TEL: +1-540-855-7041

### ORDERS

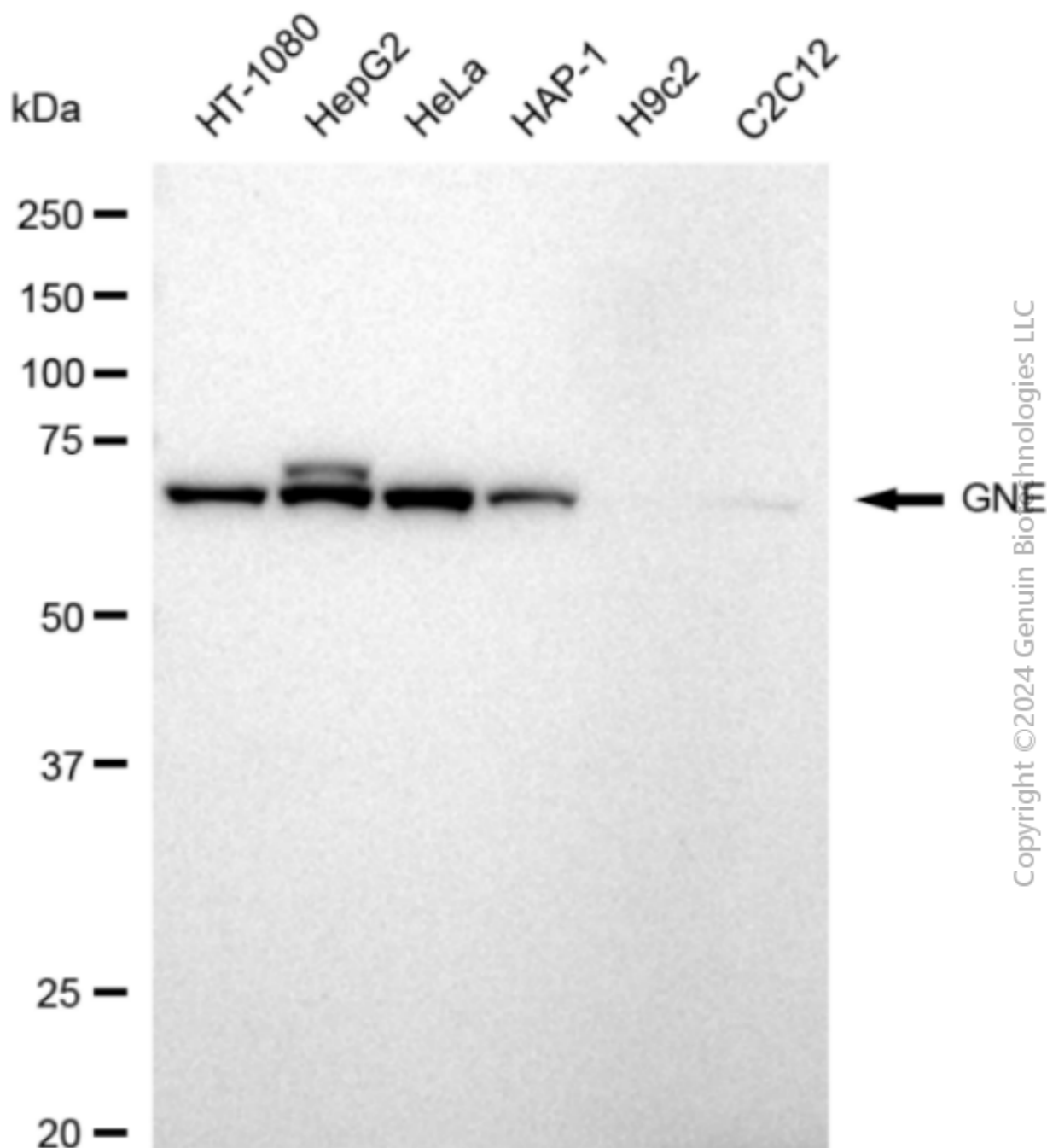
SALES@GENUINBIOTECH.COM  
FAX: +1-540-855-7041

WWW.GENUINBIOTECH.COM

## Anti-GNE Recombinant Rabbit Monoclonal Antibody

PAGE 3

Immunocytochemical staining of HeLa cells with anti-GNE antibody (Cat#2012, 1:1,000) . Nuclei were stained blue with DAPI; GNE was stained magenta with Alexa Fluor® 647. Images were taken using Leica stellaris 5. Protein abundance based on laser Intensity and smart gain: Medium. Scale bar, 20  $\mu$ m.



Western blotting analysis using anti-GNE antibody (Cat#2012). Total cell lysates (30  $\mu$ g) from various cell lines were loaded and separated by SDS-PAGE. The blot was incubated with anti-GNE antibody (Cat#2012, 1:5,000) and HRP-conjugated goat anti-rabbit secondary antibody (Cat#201, 1:20,000) respectively. Image was developed using FeQ™ ECL Substrate Kit

### SUPPORT

SUPPORT@GENUINBIOTECH.COM  
TEL: +1-540-855-7041

### ORDERS

SALES@GENUINBIOTECH.COM  
FAX: +1-540-855-7041

[WWW.GENUINBIOTECH.COM](http://WWW.GENUINBIOTECH.COM)

# **Anti-GNE Recombinant Rabbit Monoclonal Antibody**

PAGE 4

(Cat#226).

---

## **SUPPORT**

SUPPORT@GENUINBIOTECH.COM  
TEL: +1-540-855-7041

## **ORDERS**

SALES@GENUINBIOTECH.COM  
FAX:+1-540-855-7041

**[WWW.GENUINBIOTECH.COM](http://WWW.GENUINBIOTECH.COM)**