

Anti-Nucleostemin Recombinant Rabbit Monoclonal Antibody



Catalog #: 2013

Aliases

GNL3; G Protein Nucleolar 3; E2IG3; NS; Nucleostemin; C77032; Guanine Nucleotide Binding Protein-Like 3 (Nucleolar); Guanine Nucleotide-Binding Protein-Like 3; Nucleolar GTP-Binding Protein 3; Novel Nucleolar Protein 47; E2-Induced Gene 3 Protein; MGC800; NNP47; Nug1; Estradiol-Induced Nucleotide Binding Protein

Background

Gene Name: GNL3

NCBI Gene Entry: [26354](#)

UniProt Entry: [Q9BVP2](#)

Application Information

Molecular Weight: Predicted, 62 kDa; observed, 65 kDa

Clonality: Rabbit monoclonal antibody

Clone ID: 23GB5565

Species Reactivity: Human, rat

Applications Tested: Western blotting (WB), flow cytometry (FCM), immunocytochemistry (IC)

Immunogen

A synthesized peptide derived from human Nucleostemin

Isotype

Rabbit IgG

Storage Buffer

Supplied in PBS (pH 7.4) containing 50% glycerol, and 0.02% sodium azide.

Storage

Store at -20 °C for one year.

Recommended Dilutions

Western Blotting (WB): 1:1,000-1:5,000

Flow Cytometry (FCM): 1:2,000

Immunocytochemistry (IC): 1:100-1:1,000

SUPPORT

SUPPORT@GENUINBIOTECH.COM
TEL: +1-540-855-7041

ORDERS

SALES@GENUINBIOTECH.COM
FAX: +1-540-855-7041

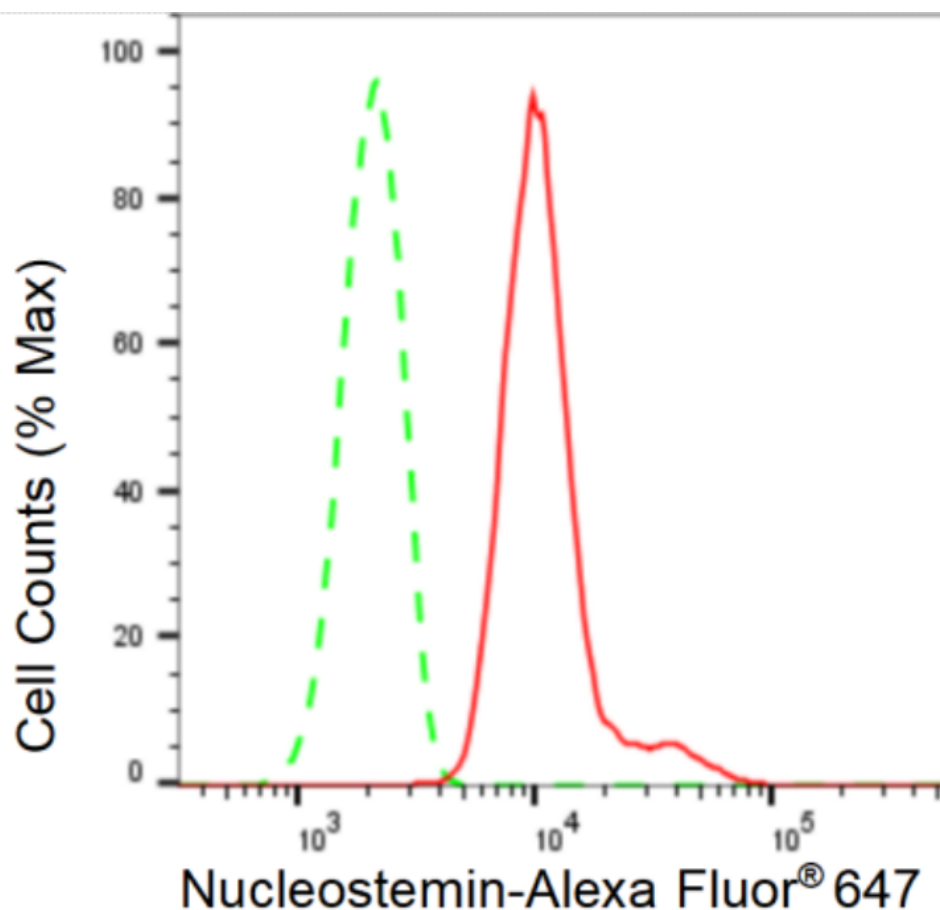
WWW.GENUINBIOTECH.COM

Anti-Nucleostemin Recombinant Rabbit Monoclonal Antibody

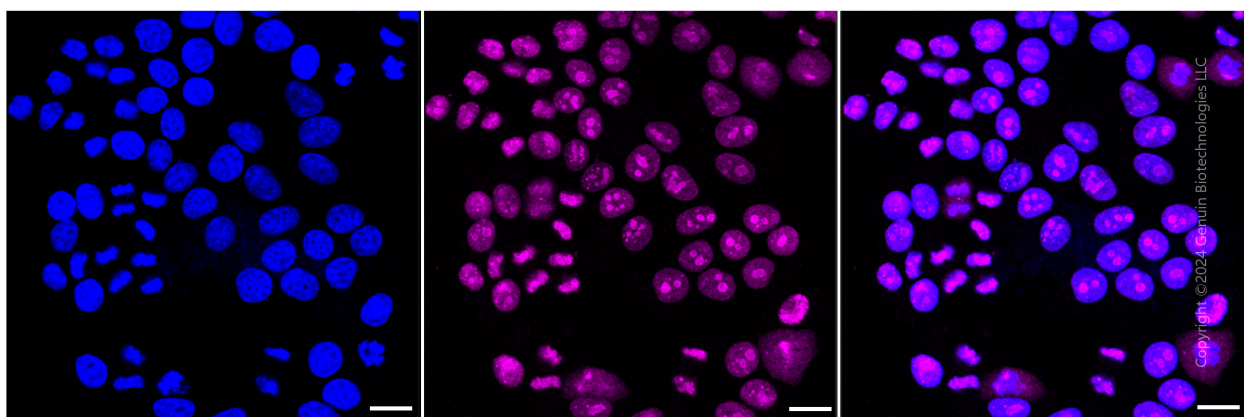
PAGE 2

Note: This product is for research use only.

Validation Data



Flow cytometric analysis of Nucleostemin expression in HepG2 cells using Nucleostemin antibody (Cat#2013, 1:2,000). Green, isotype control; red, Nucleostemin.



Immunocytochemical staining of HepG2 cells with anti-Nucleostemin antibody (Cat#2013, 1:1,000). Nuclei were stained blue with DAPI; Nucleostemin was stained magenta with Alexa

SUPPORT

SUPPORT@GENUINBIOTECH.COM
TEL: +1-540-855-7041

ORDERS

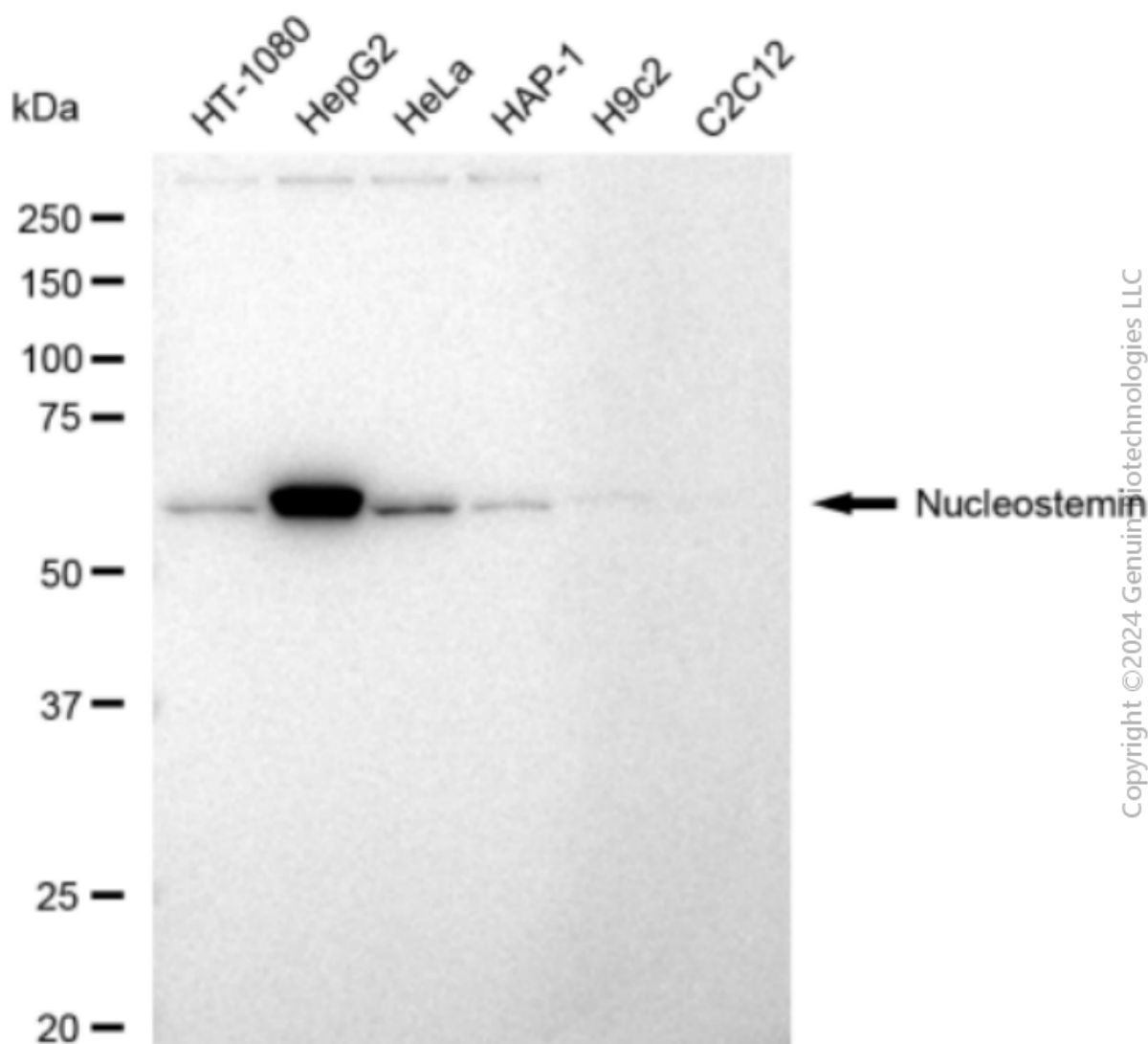
SALES@GENUINBIOTECH.COM
FAX: +1-540-855-7041

WWW.GENUINBIOTECH.COM

Anti-Nucleostemin Recombinant Rabbit Monoclonal Antibody

PAGE 3

Fluor® 647. Images were taken using Leica stellaris 5. Protein abundance based on laser Intensity and smart gain: Medium. Scale bar: 20 µm.



Western blotting analysis using anti-Nucleostemin antibody (Cat#2013). Total cell lysates (30 µg) from various cell lines were loaded and separated by SDS-PAGE. The blot was incubated with anti-Nucleostemin antibody (Cat#2013, 1:5,000) and HRP-conjugated goat anti-rabbit secondary antibody (Cat#201, 1:20,000) respectively. Image was developed using FeQ™ ECL Substrate Kit (Cat#226).

SUPPORT

SUPPORT@GENUINBIOTECH.COM
TEL: +1-540-855-7041

ORDERS

SALES@GENUINBIOTECH.COM
FAX: +1-540-855-7041

WWW.GENUINBIOTECH.COM