

Anti-Cystatin A Recombinant Rabbit Monoclonal Antibody



Catalog #: 2033

Aliases

CSTA; Cystatin A; STF1; STFA; Cystatin A (Stefin A); Cystatin-A; Cystatin AS; Cystatin-AS; Stefin A; Stefin-A; AREI; PSS4

Background

Gene Name: CSTA

NCBI Gene Entry: [1475](#)

UniProt Entry: [P01040](#)

Application Information

Molecular Weight: Predicted, 11 kDa; observed, 13 kDa

Clonality: Rabbit monoclonal antibody

Clone ID: 23GB5665

Species Reactivity: Rat

Applications Tested: Western blotting (WB), flow cytometry (FCM), immunocytochemistry (IC)

Immunogen

A synthesized peptide derived from human Cystatin A

Isotype

Rabbit IgG

Storage Buffer

Supplied in PBS (pH 7.4) containing 50% glycerol, and 0.02% sodium azide.

Storage

Store at -20 °C for one year.

Recommended Dilutions

Western Blotting (WB): 1:1,000-1:5,000

Flow Cytometry (FCM): 1:2,000

Immunocytochemistry (IC): 1:100-1:1,000

Note: This product is for research use only.

Validation Data

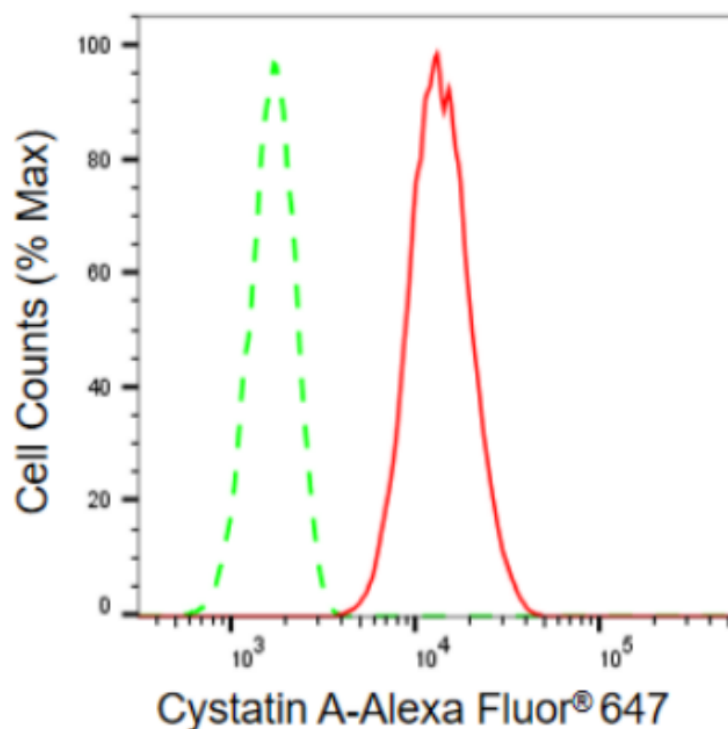
SUPPORT

SUPPORT@GENUINBIOTECH.COM
TEL: +1-540-855-7041

ORDERS

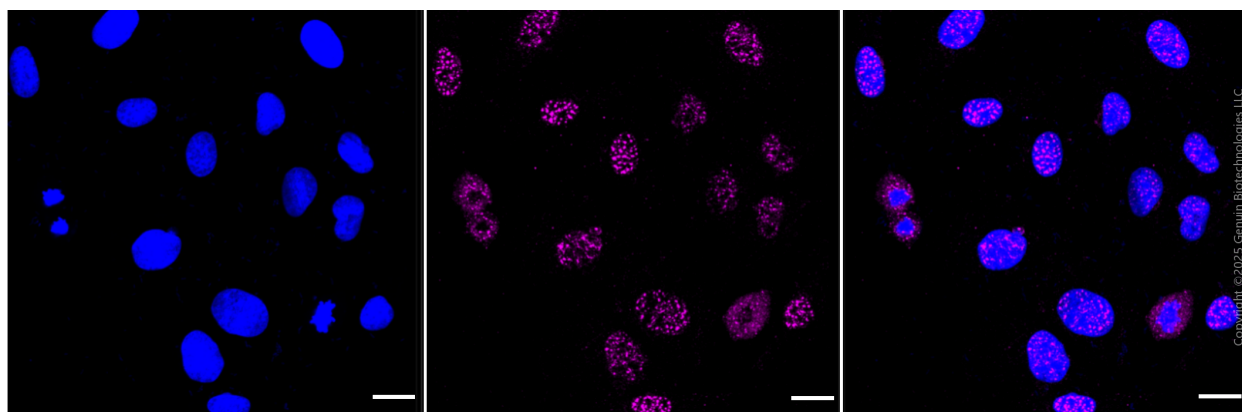
SALES@GENUINBIOTECH.COM
FAX: +1-540-855-7041

WWW.GENUINBIOTECH.COM



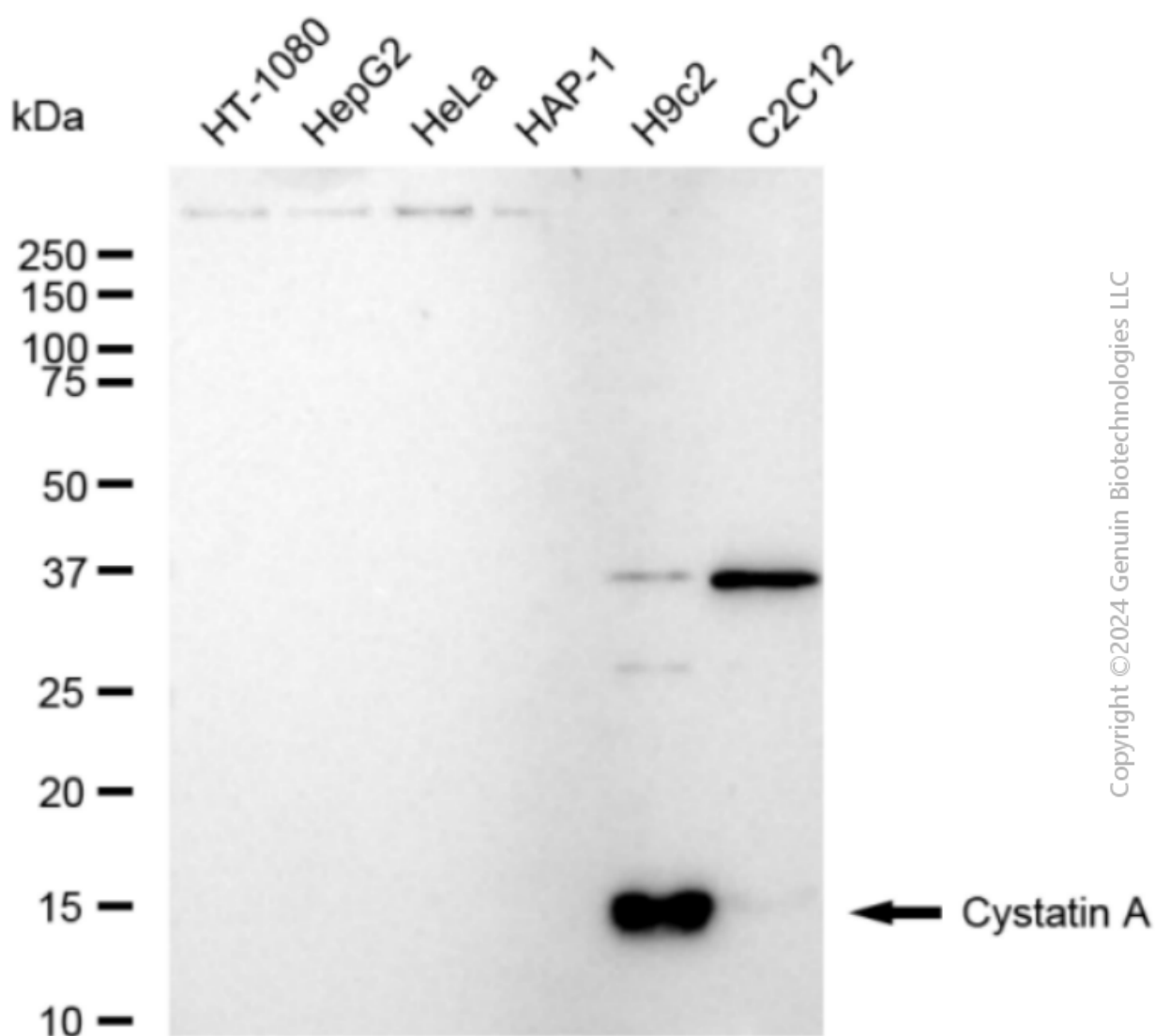
Copyright © 2024 Genuin Biotechnologies LLC

Flow cytometric analysis of Cystatin A expression in H9c2 cells using Cystatin A antibody (Cat#2033, 1:2,000). Green, isotype control; red, Cystatin A.



Copyright © 2025 Genuin Biotechnologies LLC

Immunocytochemical staining of H9C2 cells with anti-Cystatin A antibody (Cat #2033, 1:1,000). Nuclei were stained blue with DAPI; Cystatin A was stained magenta with Alexa Fluor® 647. Images were taken using Leica stellaris 5. Protein abundance based on laser Intensity and smart gain: Medium. Scale bar, 20 μ m.



Western blotting analysis using anti-Cystatin A antibody (Cat#2033). Total cell lysates (30 µg) from various cell lines were loaded and separated by SDS-PAGE. The blot was incubated with anti-Cystatin A antibody (Cat#2033, 1:5,000) and HRP-conjugated goat anti-rabbit secondary antibody (Cat#201, 1:20,000) respectively. Image was developed using FeQ™ ECL Substrate Kit (Cat#226).