

Anti-CXCL5 Recombinant Rabbit Monoclonal Antibody



Catalog #: 2034

Aliases

CXCL5; C-X-C Motif Chemokine Ligand 5; ENA-78; SCYB5; Small Inducible Cytokine Subfamily B (Cys-X-Cys), Member 5 (Epithelial-Derived Neutrophil-Activating Peptide 78); Epithelial-Derived Neutrophil-Activating Protein 78; Neutrophil-Activating Peptide ENA-78; Chemokine (C-X-C Motif) Ligand 5; C-X-C Motif Chemokine 5; Neutrophil-Activating Protein 78; Small-Inducible Cytokine B5; ENA-78(1-78); ENA78

Background

Gene Name: CXCL5

NCBI Gene Entry: [6374](#)

UniProt Entry: [P42830](#)

Application Information

Molecular Weight: Predicted, 12 kDa; observed, 10 kDa

Clonality: Rabbit monoclonal antibody

Clone ID: 23GB5670

Species Reactivity: Human

Applications Tested: Western blotting (WB), flow cytometry (FCM), immunocytochemistry (IC)

Immunogen

A synthesized peptide derived from human CXCL5

Isotype

Rabbit IgG

Storage Buffer

Supplied in PBS (pH 7.4) containing 50% glycerol, and 0.02% sodium azide.

Storage

Store at -20 °C for one year.

Recommended Dilutions

Western Blotting (WB): 1:1,000-1:5,000

Flow Cytometry (FCM): 1:2,000

Immunocytochemistry (IC): 1:100-1:1,000

SUPPORT

SUPPORT@GENUINBIOTECH.COM
TEL: +1-540-855-7041

ORDERS

SALES@GENUINBIOTECH.COM
FAX: +1-540-855-7041

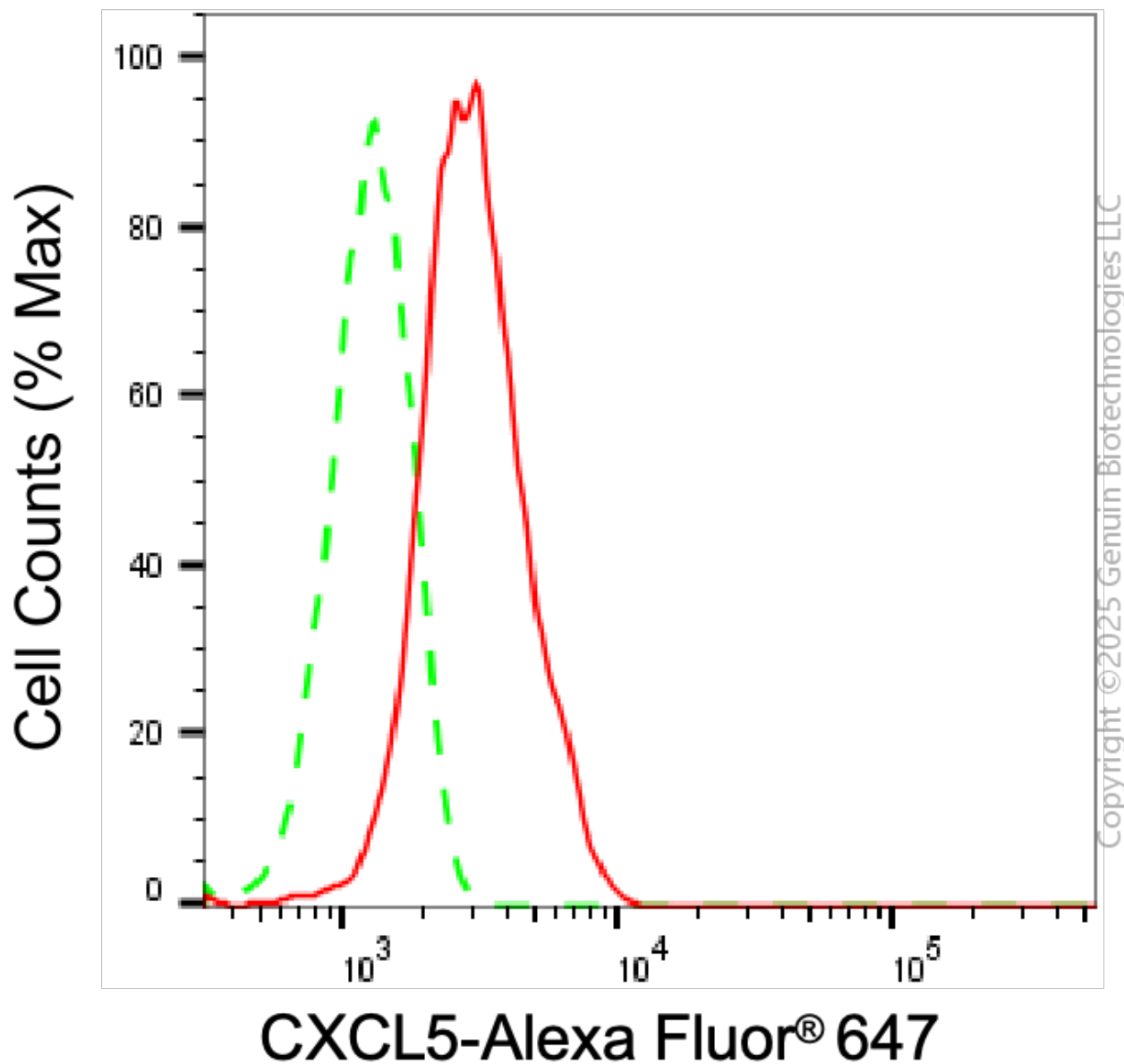
WWW.GENUINBIOTECH.COM

Anti-CXCL5 Recombinant Rabbit Monoclonal Antibody

PAGE 2

Note: This product is for research use only.

Validation Data



Flow cytometric analysis of CXCL5 expression in HepG2 cells using anti-CXCL5 antibody (Cat#2034, 1:2,000). Green, isotype control; red, CXCL5.

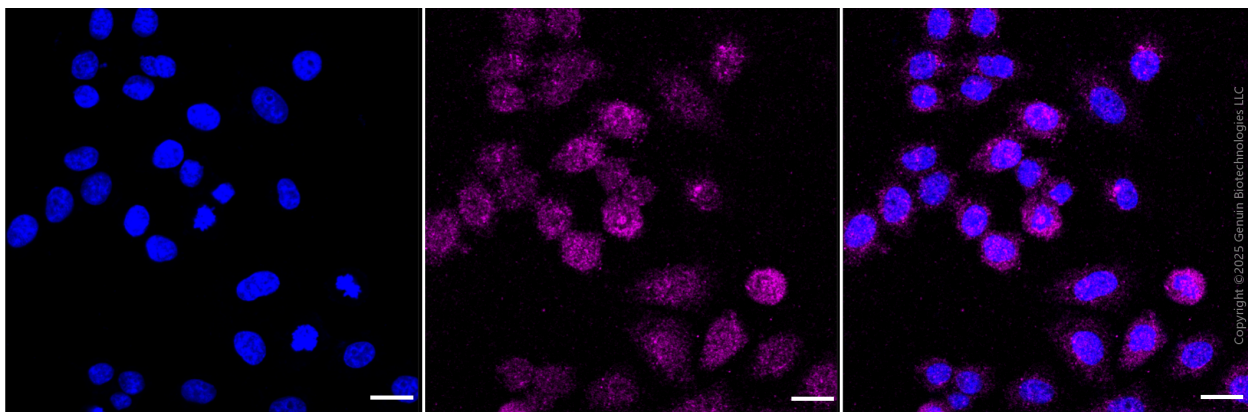
SUPPORT

SUPPORT@GENUINBIOTECH.COM
TEL: +1-540-855-7041

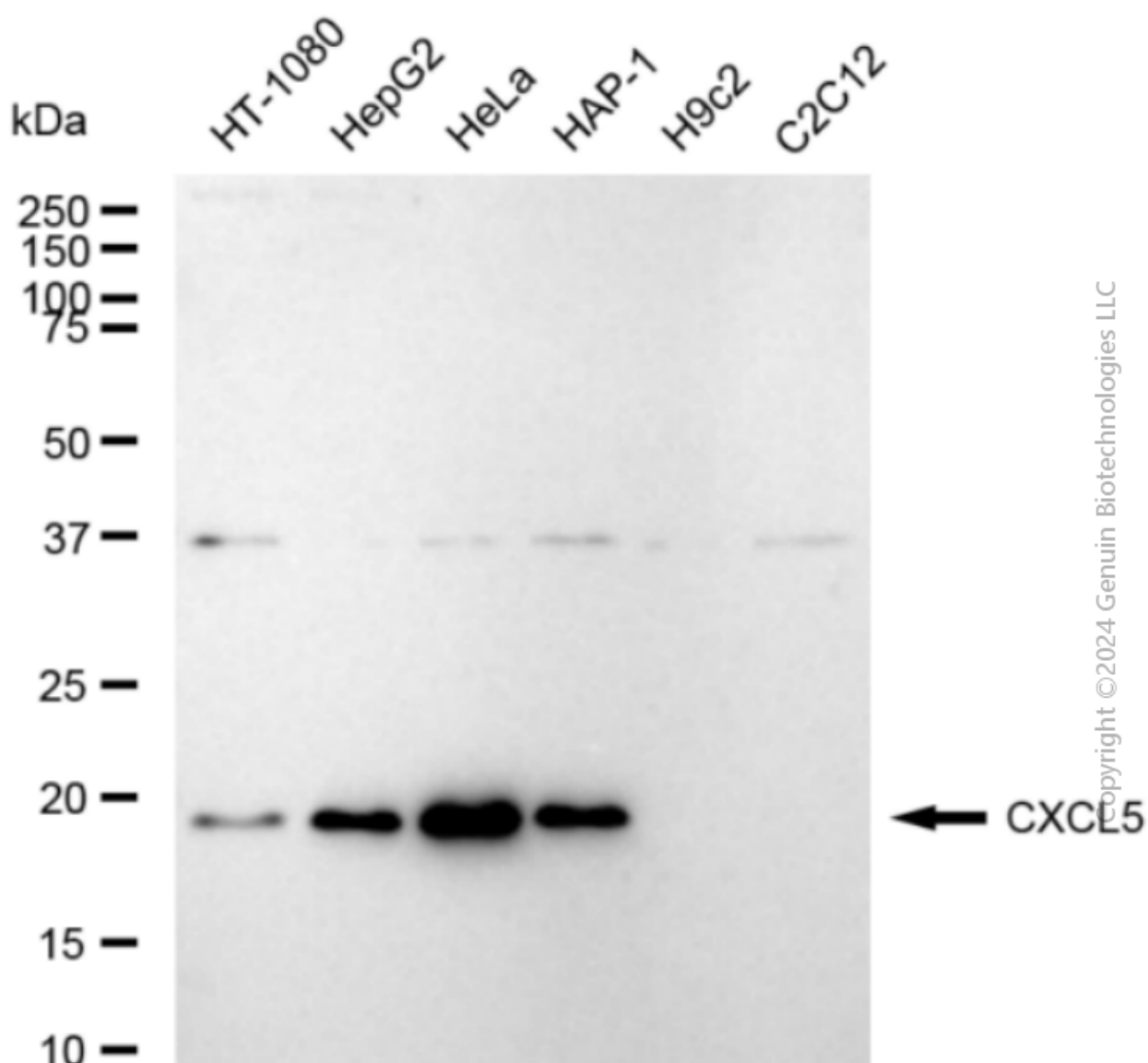
ORDERS

SALES@GENUINBIOTECH.COM
FAX: +1-540-855-7041

WWW.GENUINBIOTECH.COM



Immunocytochemical staining of HepG2 cells with anti-CXCL5 antibody (Cat #2034, 1:1,000) . Nuclei were stained blue with DAPI; CXCL5 was stained magenta with Alexa Fluor® 647. Images were taken using Leica stellaris 5. Protein abundance based on laser Intensity and smart gain: Medium. Scale bar, 20 μ m.



Western blotting analysis using anti-CXCL5 antibody (Cat#2034). Total cell lysates (30 µg) from A549 cells were loaded and separated by SDS-PAGE. The blot was incubated with anti-CXCL5 antibody (Cat#2034, 1:5,000) and HRP-conjugated goat anti rabbit secondary antibody (Cat#201, 1:20,000) respectively. Image was developed using FeQ™ ECL Substrate Kit (Cat#226).