

Anti-P2Y12 Recombinant Rabbit Monoclonal Antibody



Catalog #: 2035

Aliases

P2RY12; Purinergic Receptor P2Y12; SP1999; P2Y12; HORK3; Purinergic Receptor P2Y, G-Protein Coupled, 12; P2Y12 Platelet ADP Receptor; ADP-Glucose Receptor; P2Y Purinoceptor 12; P2Y(ADP); P2Y(Cyc); P2T(AC); P2Y(AC); ADPG-R; Putative G-Protein Coupled Receptor; G-Protein Coupled Receptor SP1999; Gi-Coupled ADP Receptor HORK3; Purinergic Receptor P2RY12; P2Y(12)R; BDPLT8

Background

Gene Name: P2RY12

NCBI Gene Entry: [64805](#)

UniProt Entry: [Q9H244](#)

Application Information

Molecular Weight: Predicted, 39 kDa; observed, 50 kDa

Clonality: Rabbit monoclonal antibody

Clone ID: 23GB4970

Species Reactivity: Human, mouse, rat

Applications Tested: Western blotting (WB), immunocytochemistry (IC), flow cytometry (FCM)

Immunogen

A synthesized peptide derived from human P2Y12

Isotype

Rabbit IgG

Storage Buffer

Supplied in PBS (pH 7.4) containing 50% glycerol, and 0.02% sodium azide.

Storage

Store at -20 °C for one year.

Recommended Dilutions

Western Blotting (WB): 1:1,000-1:5,000

Immunocytochemistry (IC): 1:100-1:1,000

Flow Cytometry (FCM): 1:2,000

SUPPORT

SUPPORT@GENUINBIOTECH.COM
TEL: +1-540-855-7041

ORDERS

SALES@GENUINBIOTECH.COM
FAX: +1-540-855-7041

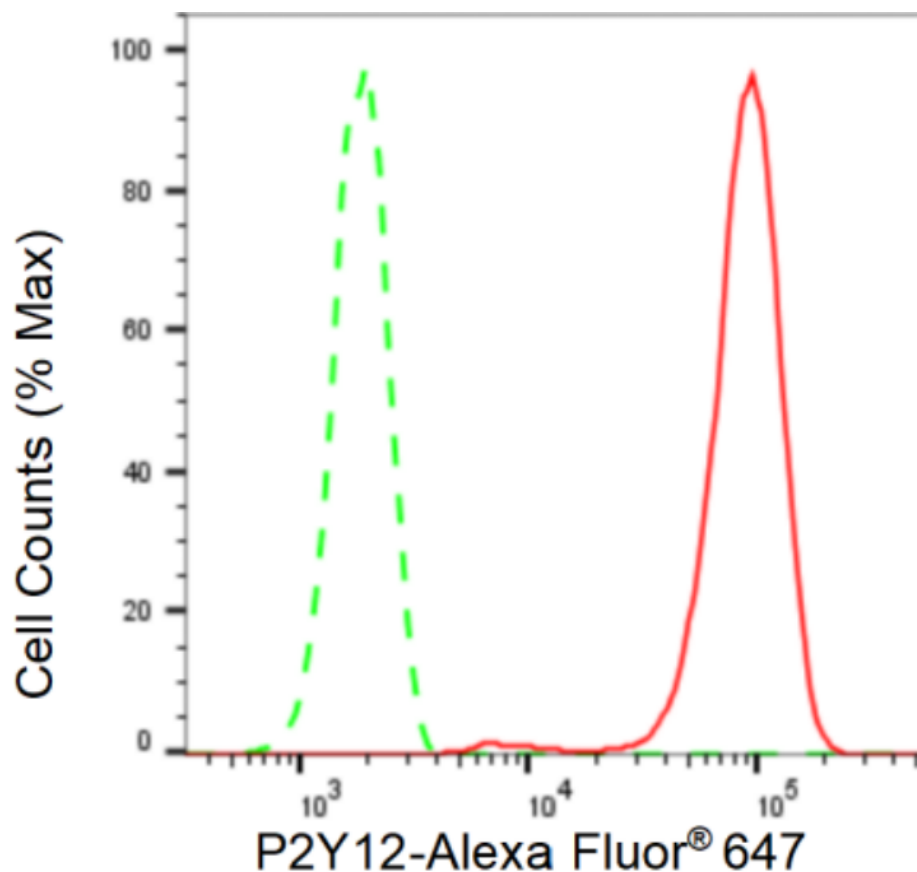
WWW.GENUINBIOTECH.COM

Anti-P2Y12 Recombinant Rabbit Monoclonal Antibody

PAGE 2

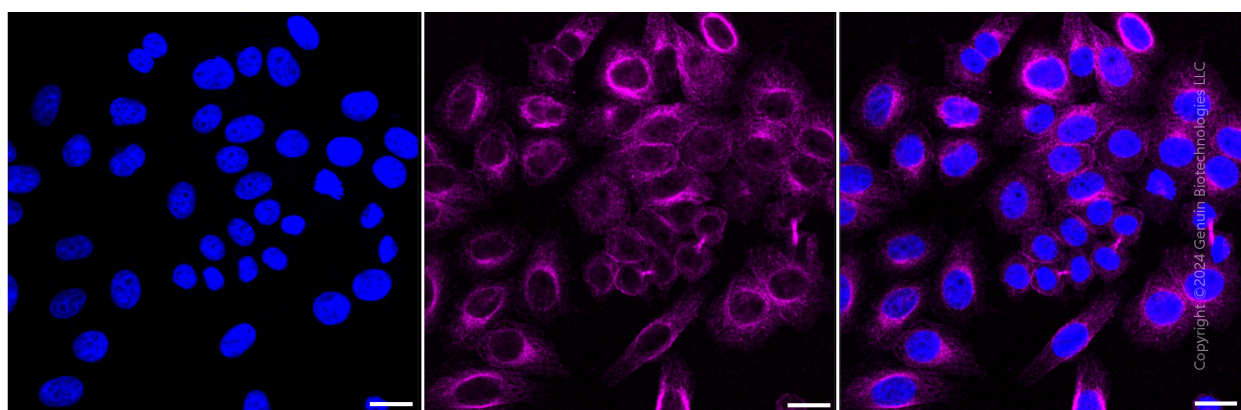
Note: This product is for research use only.

Validation Data



Copyright ©2024 Genuin Biotechnologies LLC

Flow cytometric analysis of P2Y12 expression in HepG2 cells using P2Y12 antibody (Cat#2035, 1:2,000). Green, isotype control; red, P2Y12.



Copyright ©2024 Genuin Biotechnologies LLC

SUPPORT

SUPPORT@GENUINBIOTECH.COM
TEL: +1-540-855-7041

ORDERS

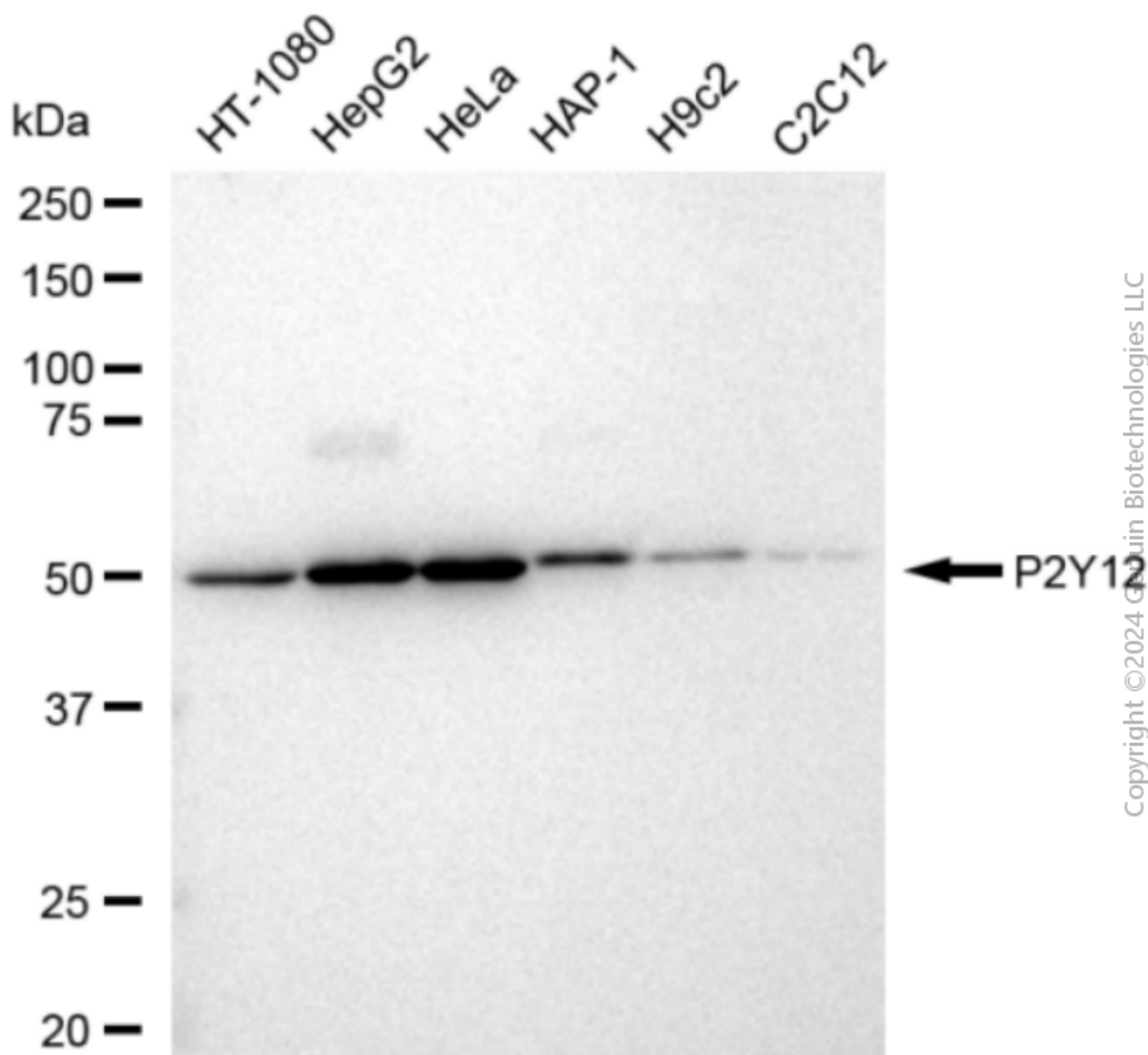
SALES@GENUINBIOTECH.COM
FAX: +1-540-855-7041

WWW.GENUINBIOTECH.COM

Anti-P2Y12 Recombinant Rabbit Monoclonal Antibody

PAGE 3

Medium. Scale bar: 20 μ m.



Western blotting analysis using anti-P2Y12 antibody (Cat#2035). Total cell lysates (30 μ g) from various cell lines were loaded and separated by SDS-PAGE. The blot was incubated with anti-P2Y12 antibody (Cat#2035, 1:5,000) and HRP-conjugated goat anti-rabbit secondary antibody (Cat#201, 1:20,000) respectively. Image was developed using FeQ™ ECL Substrate Kit (Cat#226).

SUPPORT

SUPPORT@GENUINBIOTECH.COM
TEL: +1-540-855-7041

ORDERS

SALES@GENUINBIOTECH.COM
FAX: +1-540-855-7041

WWW.GENUINBIOTECH.COM