

Anti-Von Willebrand factor Recombinant Rabbit Monoclonal Antibody



Catalog #: 2036

Aliases

VWF; Von Willebrand Factor; F8VWF; Factor VIII Related Antigen; Coagulation Factor VIII
VWF; VWD; VWF

Background

Gene Name: VWF

NCBI Gene Entry: [7450](#)

UniProt Entry: [P04275](#)

Application Information

Molecular Weight: Predicted, 309 kDa; observed, 240 kDa

Clonality: Rabbit monoclonal antibody

Clone ID: 23GB4975

Species Reactivity: Mouse

Applications Tested: Western blotting (WB), flow cytometry (FCM), immunocytochemistry (IC)

Immunogen

A synthesized peptide derived from human VWF

Isotype

Rabbit IgG

Storage Buffer

Supplied in PBS (pH 7.4) containing 50% glycerol, and 0.02% sodium azide.

Storage

Store at -20 °C for one year.

Recommended Dilutions

Western Blotting (WB): 1:1,000-1:5,000

Flow Cytometry (FCM): 1:2,000

Immunocytochemistry (IC): 1:100-1:1,000

Note: This product is for research use only.

Validation Data

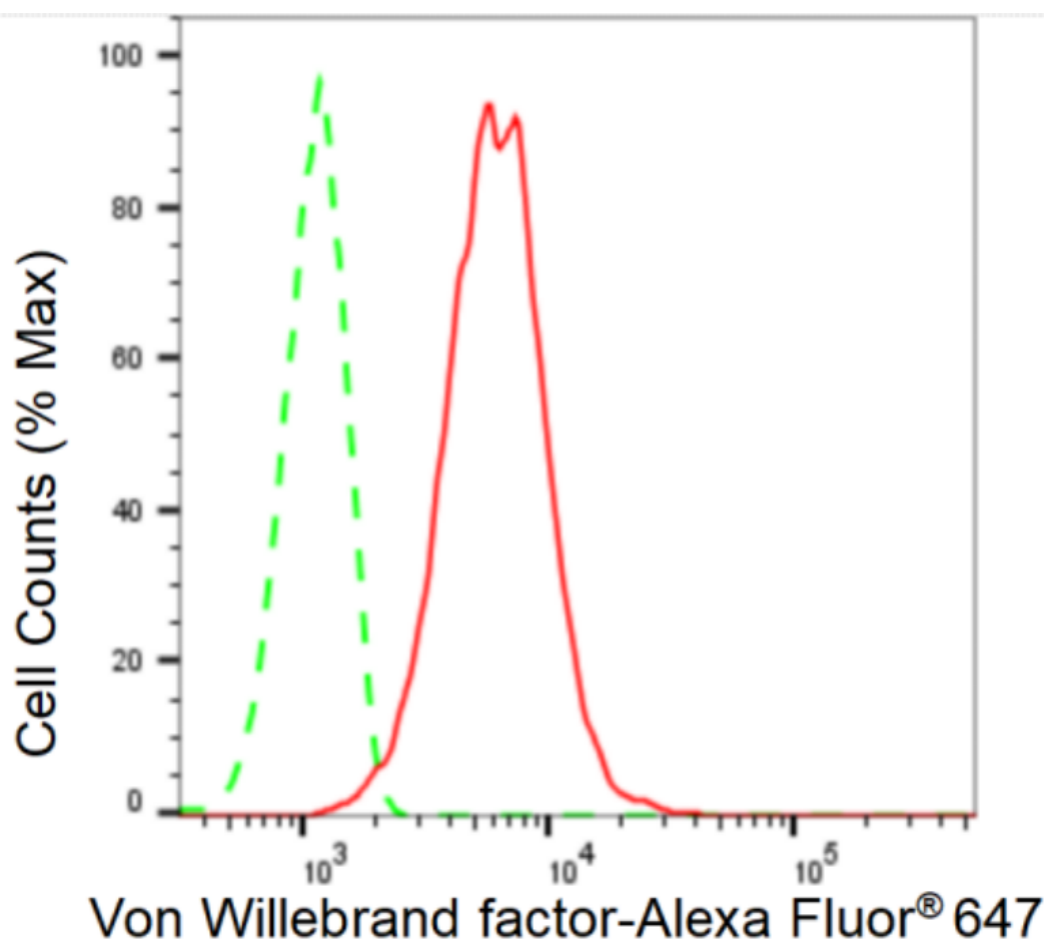
SUPPORT

SUPPORT@GENUINBIOTECH.COM
TEL: +1-540-855-7041

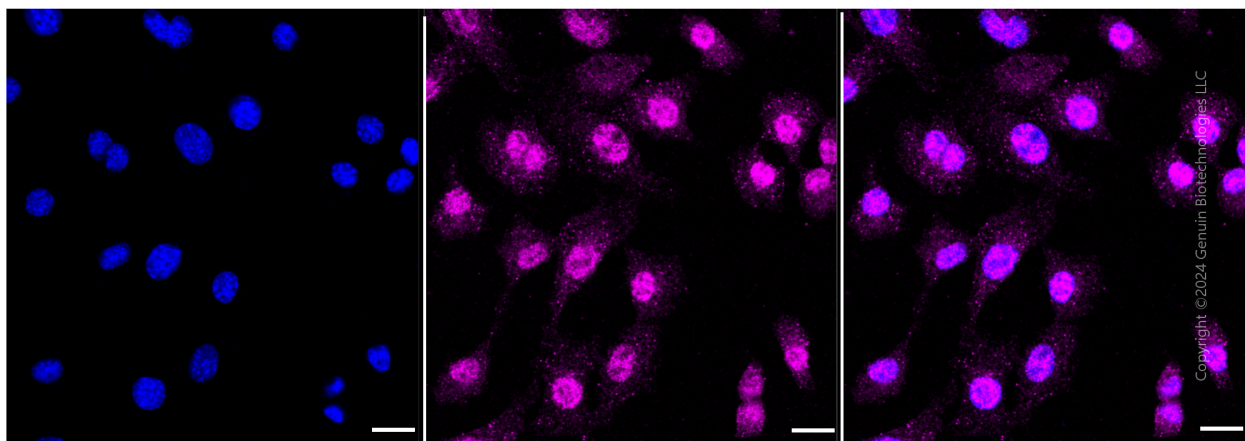
ORDERS

SALES@GENUINBIOTECH.COM
FAX: +1-540-855-7041

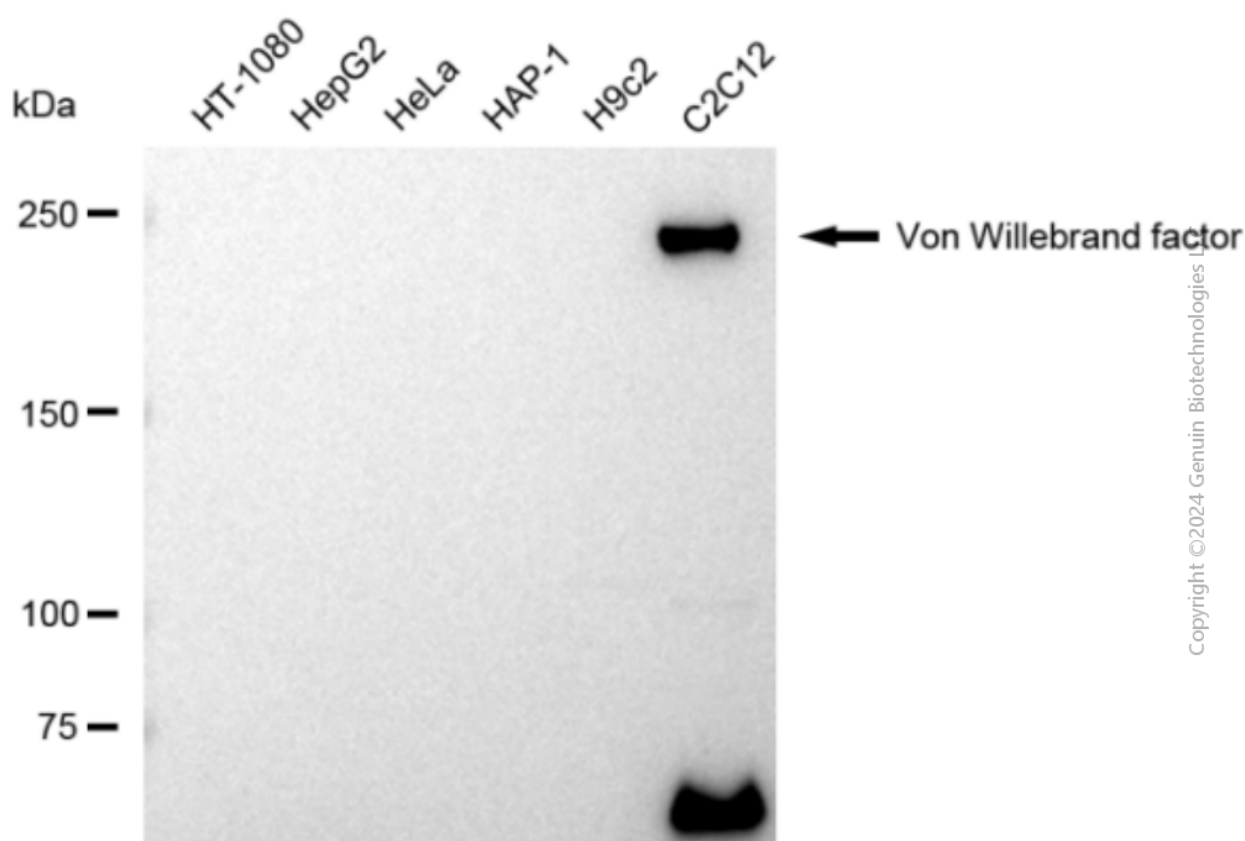
WWW.GENUINBIOTECH.COM



Flow cytometric analysis of Von Willebrand factor expression in C2C12 cells using Von Willebrand factor antibody (2036, 1:2,000). Green, isotype control; red, Von Willebrand factor.



Immunocytochemical staining of C2C12 cells with anti-Von Willebrand factor antibody (Cat#2036, 1:1,000). Nuclei were stained blue with DAPI; Von Willebrand factor was stained magenta with Alexa Fluor® 647. Images were taken using Leica stellaris 5. Protein abundance based on laser Intensity and smart gain: Medium. Scale bar: 20 µm.



Western blotting analysis using anti-Von Willebrand factor antibody (Cat#2036). Total cell lysates (30 µg) from various cell lines were loaded and separated by SDS-PAGE. The blot was incubated with anti-Von Willebrand factor antibody (Cat#2036, 1:5,000) and HRP-conjugated goat anti-rabbit secondary antibody (Cat#201, 1:20,000) respectively. Image was developed using FeQ™ ECL Substrate Kit (Cat#226).