

Anti-C4 Recombinant Rabbit Monoclonal Antibody



Catalog #: 2038

Aliases

C4A; Complement C4A (Rodgers Blood Group); CPAMD2; CO4; C4A3; C4A2; C4A4; C4A6; C4S; C4; RG; C3 And PZP-Like Alpha-2-Macroglobulin Domain-Containing Protein; Complement Component 4A (Rodgers Blood Group); Acidic Complement C4; Complement C4-A; C4B; MHC Class III Region Complement; Complement Component 4A; Rodgers Form Of C4; C4A Anaphylatoxin; EC 2.1.1.144; Acidic C4; EC 2.7.11; C4AD

Background

Gene Name: C4A

NCBI Gene Entry: [720](#)

UniProt Entry: [P0C0L4](#)

Application Information

Molecular Weight: Predicted, 193 kDa; observed, 210 kDa

Clonality: Rabbit monoclonal antibody

Clone ID: 23GB4985

Species Reactivity: Mouse

Applications Tested: Western blotting (WB), flow cytometry (FCM), immunocytochemistry (IC)

Immunogen

A synthesized peptide derived from human C4

Isotype

Rabbit IgG

Storage Buffer

Supplied in PBS (pH 7.4) containing 50% glycerol, and 0.02% sodium azide.

Storage

Store at -20 °C for one year.

Recommended Dilutions

Western Blotting (WB): 1:1,000-1:5,000

Flow Cytometry (FCM): 1:2,000

Immunocytochemistry (IC): 1:100-1:1,000

SUPPORT

SUPPORT@GENUINBIOTECH.COM
TEL: +1-540-855-7041

ORDERS

SALES@GENUINBIOTECH.COM
FAX: +1-540-855-7041

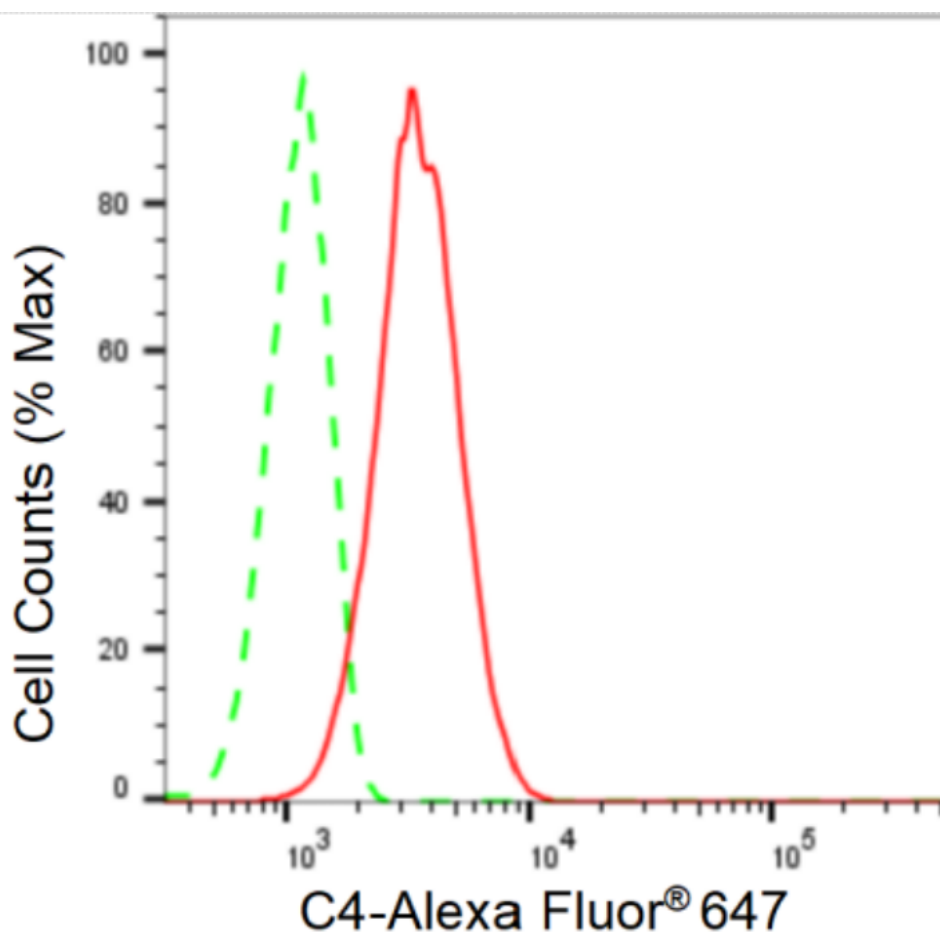
WWW.GENUINBIOTECH.COM

Anti-C4 Recombinant Rabbit Monoclonal Antibody

PAGE 2

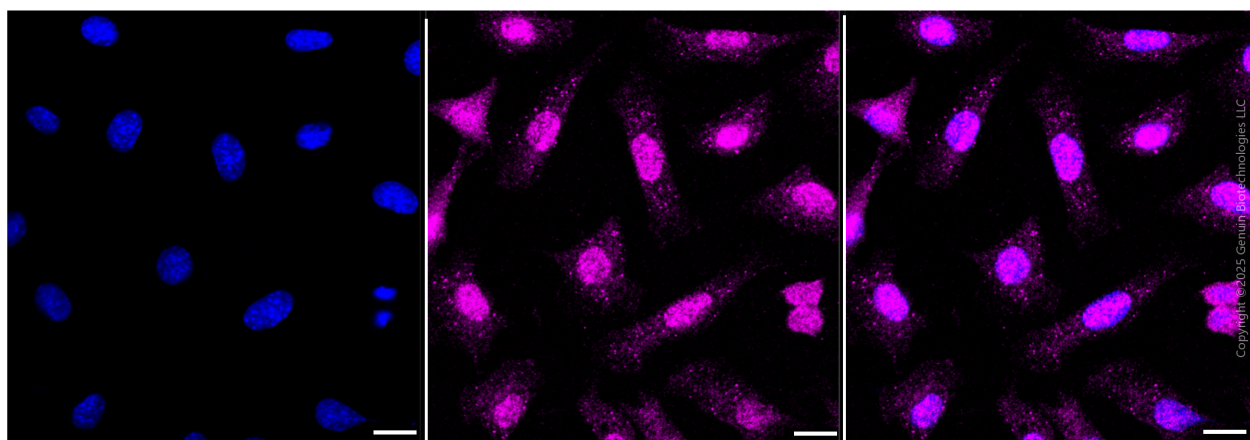
Note: This product is for research use only.

Validation Data



Copyright ©2024 Genuin Biotechnologies LLC

Flow cytometric analysis of C4 expression in C2C12 cells using C4 antibody (2038, 1:2,000). Green, isotype control; red, C4.



Copyright ©2025 Genuin Biotechnologies LLC

Immunocytochemical staining of HepG2 cells with anti-C4 antibody (Cat#2038, 1:1,000) . Nuclei were stained blue with anti-DAPI; C4 was stained magenta with Alexa Fluor® 647. Images were

SUPPORT

SUPPORT@GENUINBIOTECH.COM
TEL: +1-540-855-7041

ORDERS

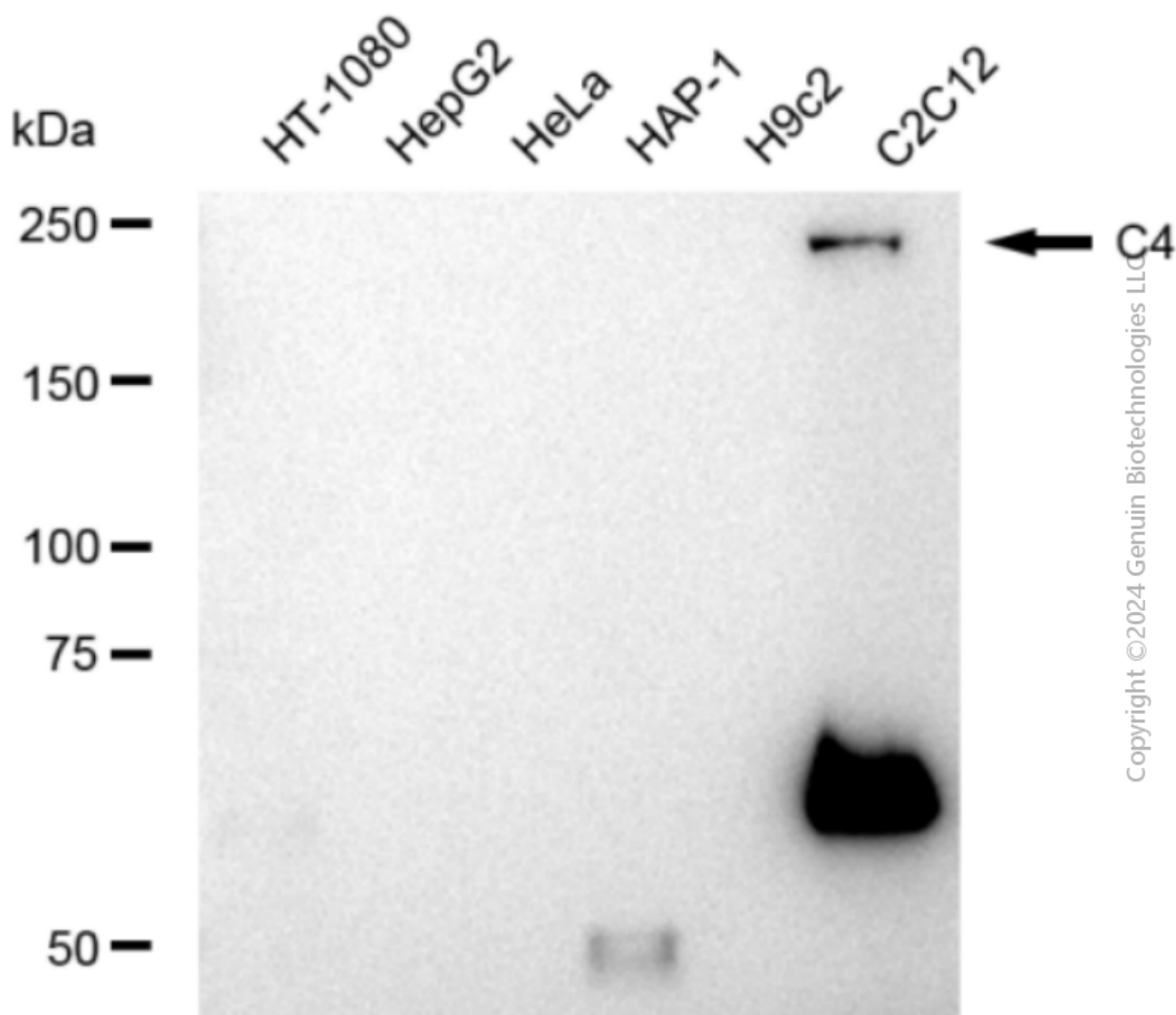
SALES@GENUINBIOTECH.COM
FAX: +1-540-855-7041

WWW.GENUINBIOTECH.COM

Anti-C4 Recombinant Rabbit Monoclonal Antibody

PAGE 3

taken using Leica stellaris 5. Protein abundance based on laser Intensity and smart gain: Medium. Scale bar, 20 μ m.



Western blotting analysis using anti-C4 antibody (Cat#2038). Total cell lysates (30 μ g) from various cell lines were loaded and separated by SDS-PAGE. The blot was incubated with anti-C4 antibody (Cat#2038, 1:5,000) and HRP-conjugated goat anti-rabbit secondary antibody (Cat#201, 1:20,000) respectively. Image was developed using FeQ™ ECL Substrate Kit (Cat#226).

SUPPORT

SUPPORT@GENUINBIOTECH.COM
TEL: +1-540-855-7041

ORDERS

SALES@GENUINBIOTECH.COM
FAX: +1-540-855-7041

WWW.GENUINBIOTECH.COM