

Anti-Transmembrane protein 67 Recombinant Rabbit Monoclonal Antibody



Catalog #: 2039

Aliases

TMEM67; Transmembrane Protein 67; Meckelin; NPHP11; JBTS6; MKS3; Meckel Syndrome Type 3 Protein; MGC26979; Meckel Syndrome, Type; MECKELIN; TNEM67

Background

Gene Name: TMEM67

NCBI Gene Entry: [91147](#)

UniProt Entry: [Q5HYA8](#)

Application Information

Molecular Weight: Predicted, 112 kDa; observed, 112 kDa

Clonality: Rabbit monoclonal antibody

Clone ID: 23GB4990

Species Reactivity: Human, mouse, rat

Applications Tested: Western blotting (WB), flow cytometry (FCM), immunocytochemistry (IC)

Immunogen

A synthesized peptide derived from human Meckelin

Isotype

Rabbit IgG

Storage Buffer

Supplied in PBS (pH 7.4) containing 50% glycerol, and 0.02% sodium azide.

Storage

Store at -20 °C for one year.

Recommended Dilutions

Western Blotting (WB): 1:1,000-1:5,000

Flow Cytometry (FCM): 1:2,000

Immunocytochemistry (IC): 1:100-1:1,000

Note: This product is for research use only.

Validation Data

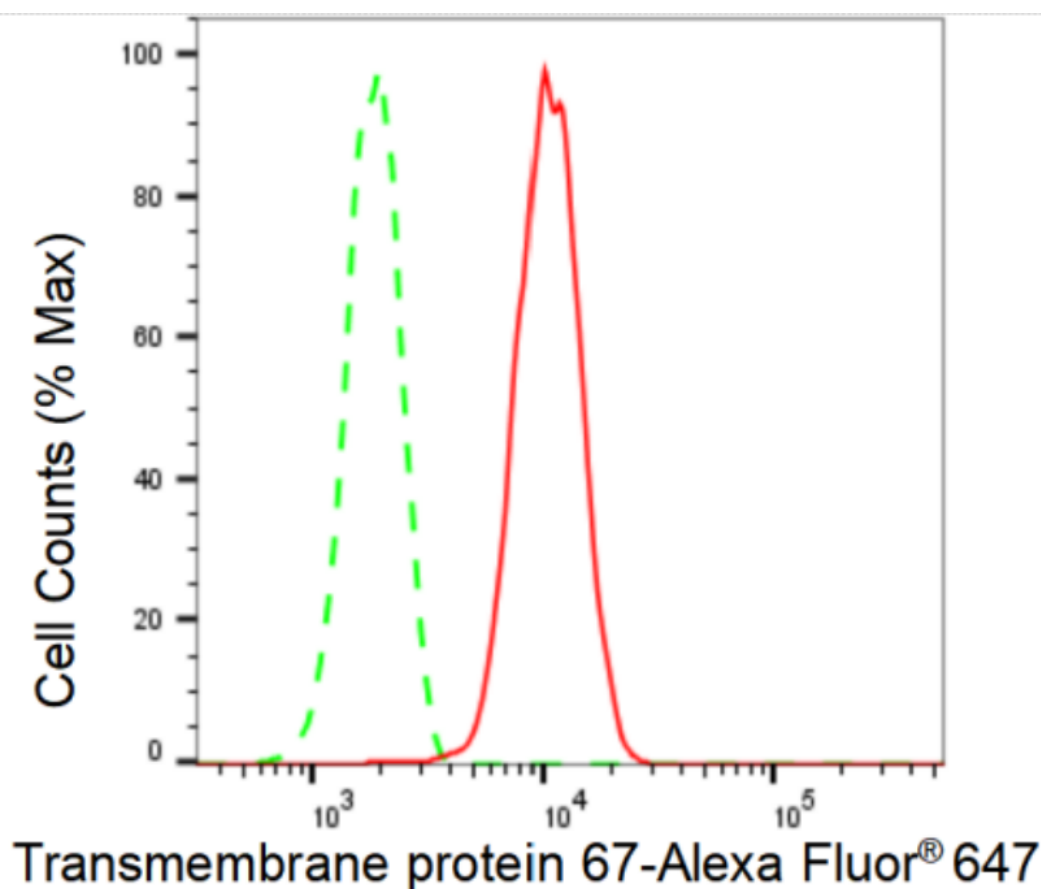
SUPPORT

SUPPORT@GENUINBIOTECH.COM
TEL: +1-540-855-7041

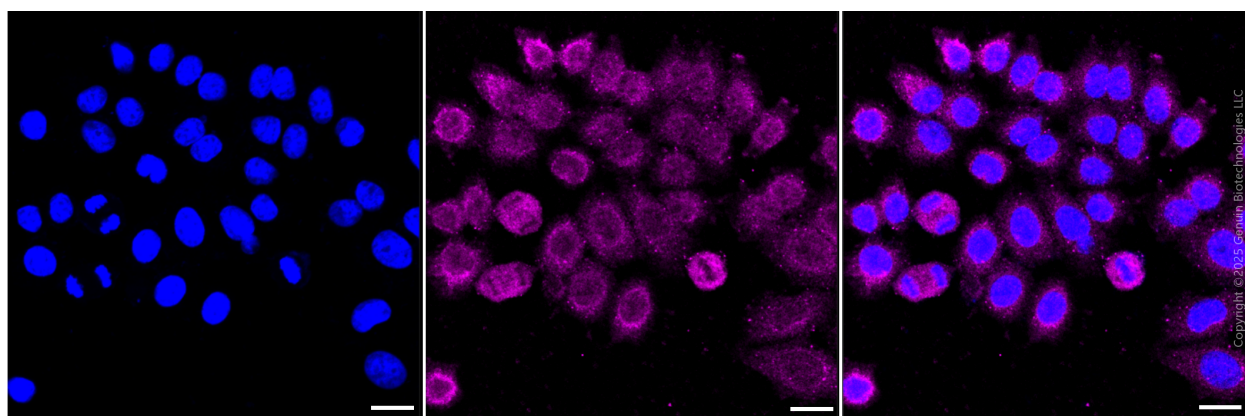
ORDERS

SALES@GENUINBIOTECH.COM
FAX: +1-540-855-7041

WWW.GENUINBIOTECH.COM



Flow cytometric analysis of Transmembrane protein 67 expression in HepG2 cells using Transmembrane protein 67 antibody (Cat#2039, 1:2,000). Green, isotype control; red, Transmembrane protein 67.



Immunocytochemical staining of HepG2 cells with anti-Transmembrane protein 67 antibody (Cat #2039, 1:1,000) . Nuclei were stained blue with DAPI; Transmembrane protein 67 was stained magenta with Alexa Fluor® 647. Images were taken using Leica stellaris 5. Protein abundance based on laser Intensity and smart gain: Medium. Scale bar, 20 μ m.

SUPPORT

SUPPORT@GENUINBIOTECH.COM
TEL: +1-540-855-7041

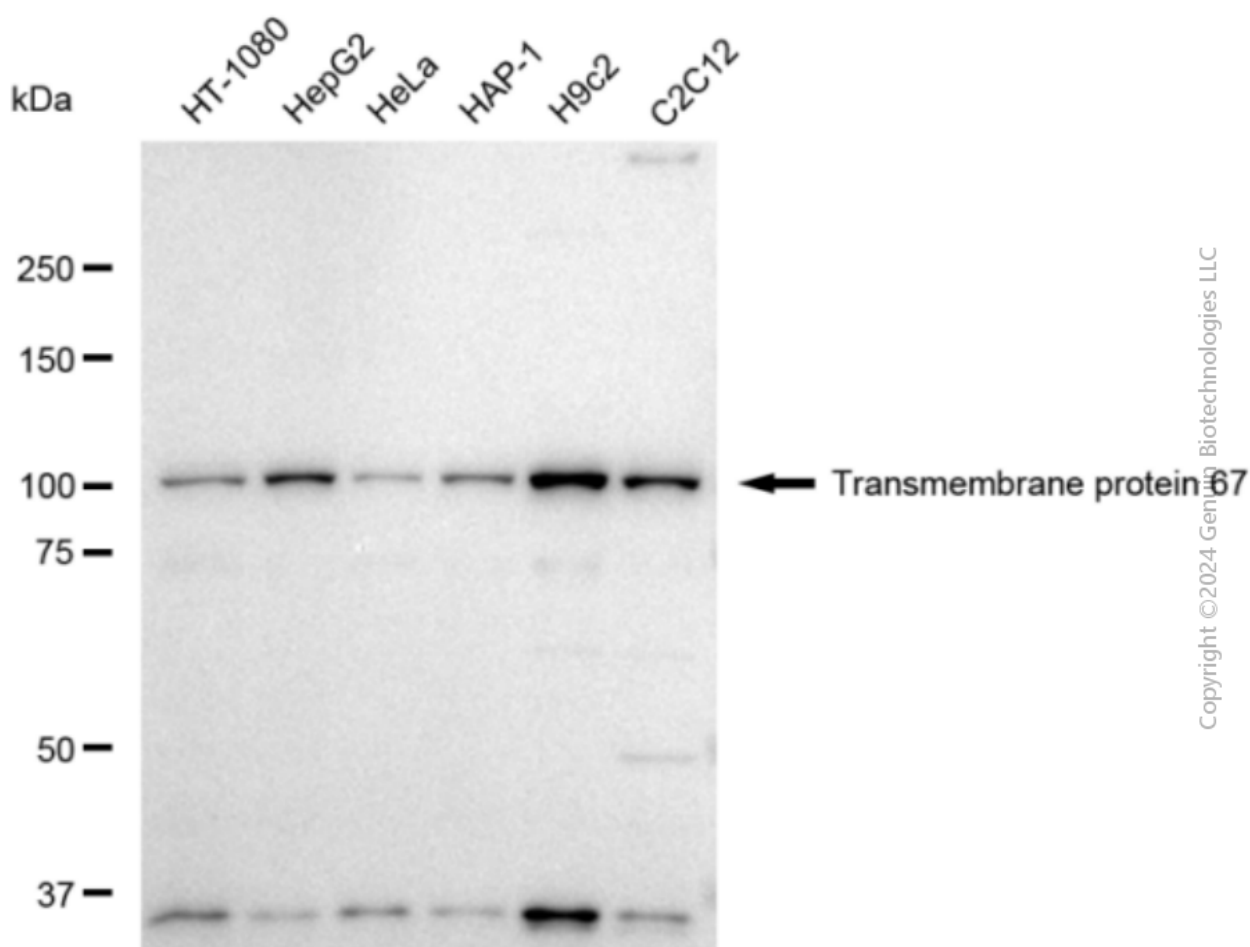
ORDERS

SALES@GENUINBIOTECH.COM
FAX: +1-540-855-7041

WWW.GENUINBIOTECH.COM

Anti-Transmembrane protein 67 Recombinant Rabbit Monoclonal Antibody

PAGE 3



Copyright © 2024 Genuin Biotechnologies LLC

Western blotting analysis using anti-Transmembrane protein 67 antibody (Cat#2039). Total cell lysates (30 μ g) from various cell lines were loaded and separated by SDS-PAGE. The blot was incubated with anti-Transmembrane protein 67 antibody (Cat#2039, 1:5,000) and HRP-conjugated goat anti-rabbit secondary antibody (Cat#201, 1:20,000) respectively. Image was developed using FeQ™ ECL Substrate Kit (Cat#226).

SUPPORT

SUPPORT@GENUINBIOTECH.COM
TEL: +1-540-855-7041

ORDERS

SALES@GENUINBIOTECH.COM
FAX: +1-540-855-7041

WWW.GENUINBIOTECH.COM