

Anti-Fetuin B Recombinant Rabbit Monoclonal Antibody



Catalog #: 2045

Aliases

FETUB; Fetuin B; Fetuin-Like Protein IRL685; Fetuin-B; 16G2; Gugu; IRL685

Background

Gene Name: FETUB

NCBI Gene Entry: [26998](#)

UniProt Entry: [Q9UGM5](#)

Application Information

Molecular Weight: Predicted, 42 kDa; observed, 50 kDa

Clonality: Rabbit monoclonal antibody

Clone ID: 23GB5725

Species Reactivity: Human, mouse

Applications Tested: Western blotting (WB), flow cytometry (FCM), immunocytochemistry (IC)

Immunogen

A synthesized peptide derived from human Fetuin B

Isotype

Rabbit IgG

Storage Buffer

Supplied in PBS (pH 7.4) containing 50% glycerol, and 0.02% sodium azide.

Storage

Store at -20 °C for one year.

Recommended Dilutions

Western Blotting (WB): 1:1,000-1:5,000

Flow Cytometry (FCM): 1:2,000

Immunocytochemistry (IC): 1:100-1:1,000

Note: This product is for research use only.

Validation Data

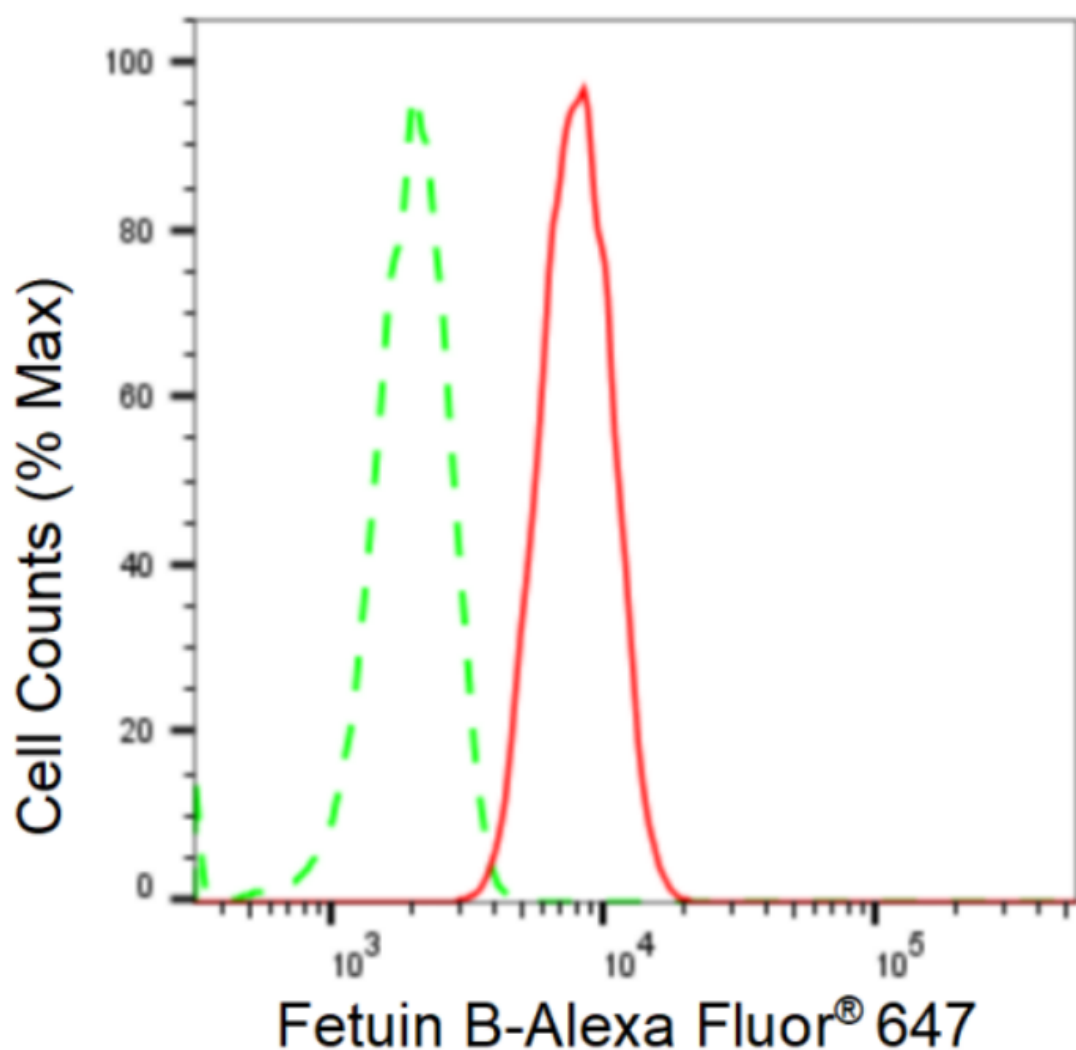
SUPPORT

SUPPORT@GENUINBIOTECH.COM
TEL: +1-540-855-7041

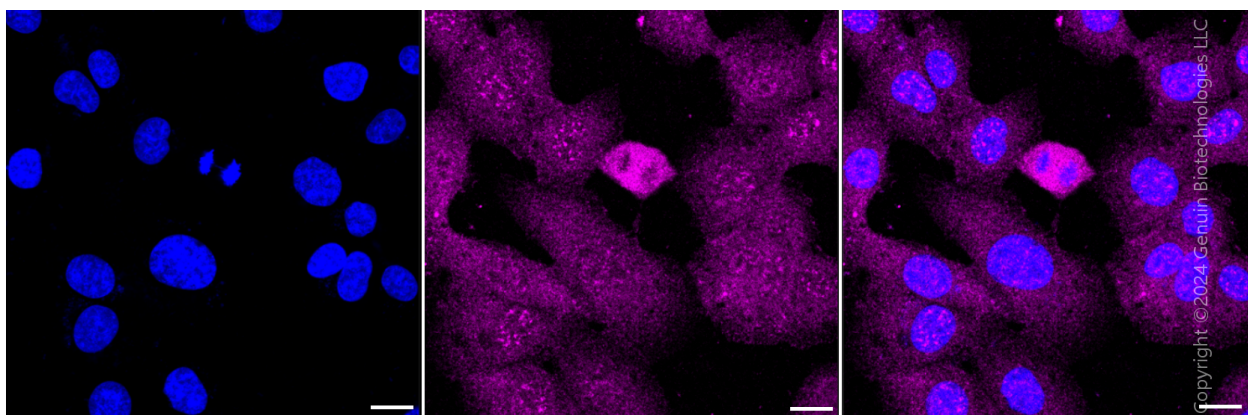
ORDERS

SALES@GENUINBIOTECH.COM
FAX: +1-540-855-7041

WWW.GENUINBIOTECH.COM



Flow cytometric analysis of Fetuin B expression in HT-1080 cells using Fetuin B antibody (Cat#2045, 1:2,000). Green, isotype control; red, Fetuin B.



Immunocytochemical staining of HT-1080 cells with anti-Fetuin B antibody (Cat#2045, 1:1,000). Nuclei were stained blue with DAPI; Fetuin B was stained magenta with Alexa Fluor® 647.

SUPPORT

SUPPORT@GENUINBIOTECH.COM
TEL: +1-540-855-7041

ORDERS

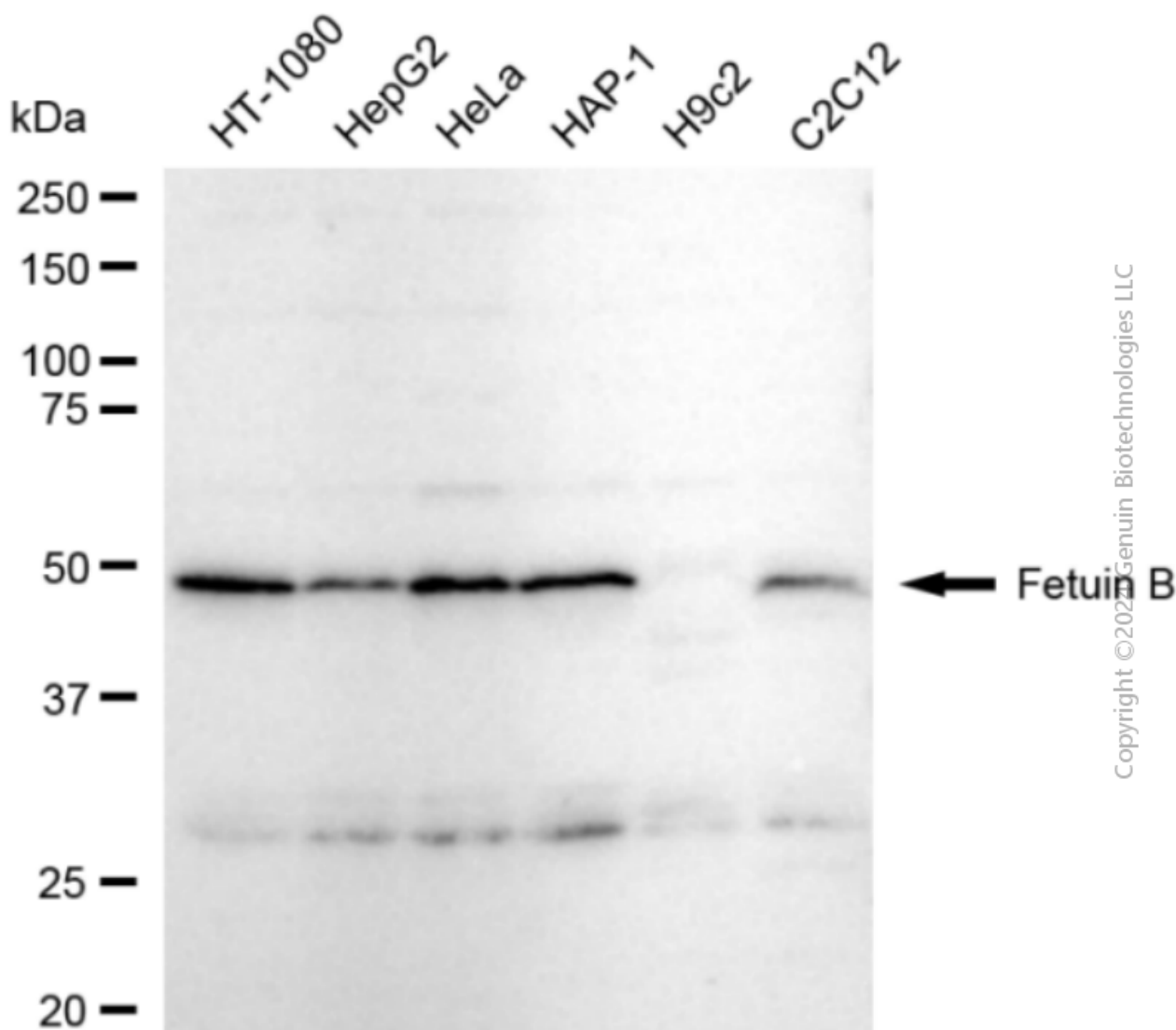
SALES@GENUINBIOTECH.COM
FAX: +1-540-855-7041

WWW.GENUINBIOTECH.COM

Anti-Fetuin B Recombinant Rabbit Monoclonal Antibody

PAGE 3

Images were taken using Leica stellaris 5. Protein abundance based on laser Intensity and smart gain: Medium. Scale bar: 20 μ m.



Western blotting analysis using anti-Fetuin B antibody (Cat#2045). Total cell lysates (30 μ g) from various cell lines were loaded and separated by SDS-PAGE. The blot was incubated with anti-Fetuin B antibody (Cat#2045, 1:5,000) and HRP-conjugated goat anti-rabbit secondary antibody (Cat#201, 1:20,000) respectively. Image was developed using FeQ™ ECL Substrate Kit (Cat#226).

SUPPORT

SUPPORT@GENUINBIOTECH.COM
TEL: +1-540-855-7041

ORDERS

SALES@GENUINBIOTECH.COM
FAX: +1-540-855-7041

WWW.GENUINBIOTECH.COM