

Anti-Fibrillarin Recombinant Rabbit Monoclonal Antibody



Catalog #: 2047

Aliases

FBL; Fibrillarin; FLRN; RNU3IP1; FIB; U6 SnRNA 2'-O-Methyltransferase Fibrillarin; RRNA 2'-O-Methyltransferase Fibrillarin; 34 KDa Nucleolar Scleroderma Antigen; Histone-Glutamine Methyltransferase; Nop1; RNA, U3 Small Nucleolar Interacting Protein 1; 34-KD Nucleolar Scleroderma Antigen; EC 2.1.1.37; EC 2.1.1.-; EC 2.1.; NOP1; FIB1

Background

Gene Name: FBL

NCBI Gene Entry: [2091](#)

UniProt Entry: [P22087](#)

Application Information

Molecular Weight: Predicted, 34 kDa; observed, 33 kDa

Clonality: Rabbit monoclonal antibody

Clone ID: 23GB5735

Species Reactivity: Human, mouse, rat

Applications Tested: Western blotting (WB), flow cytometry (FCM), immunocytochemistry (IC)

Immunogen

A synthesized peptide derived from human Fibrillarin

Isotype

Rabbit IgG

Storage Buffer

Supplied in PBS (pH 7.4) containing 50% glycerol, and 0.02% sodium azide.

Storage

Store at -20 °C for one year.

Recommended Dilutions

Western Blotting (WB): 1:1,000-1:5,000

Flow Cytometry (FCM): 1:2,000

Immunocytochemistry (IC): 1:100-1:1,000

SUPPORT

SUPPORT@GENUINBIOTECH.COM
TEL: +1-540-855-7041

ORDERS

SALES@GENUINBIOTECH.COM
FAX: +1-540-855-7041

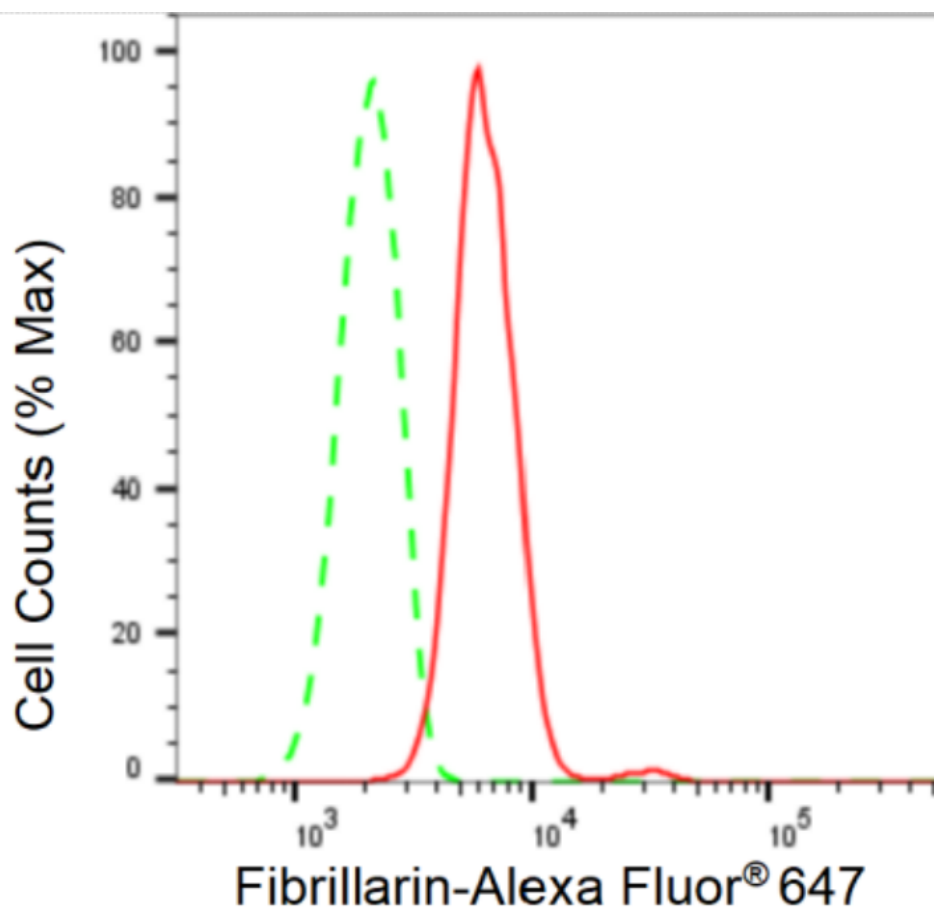
WWW.GENUINBIOTECH.COM

Anti-Fibrillarin Recombinant Rabbit Monoclonal Antibody

PAGE 2

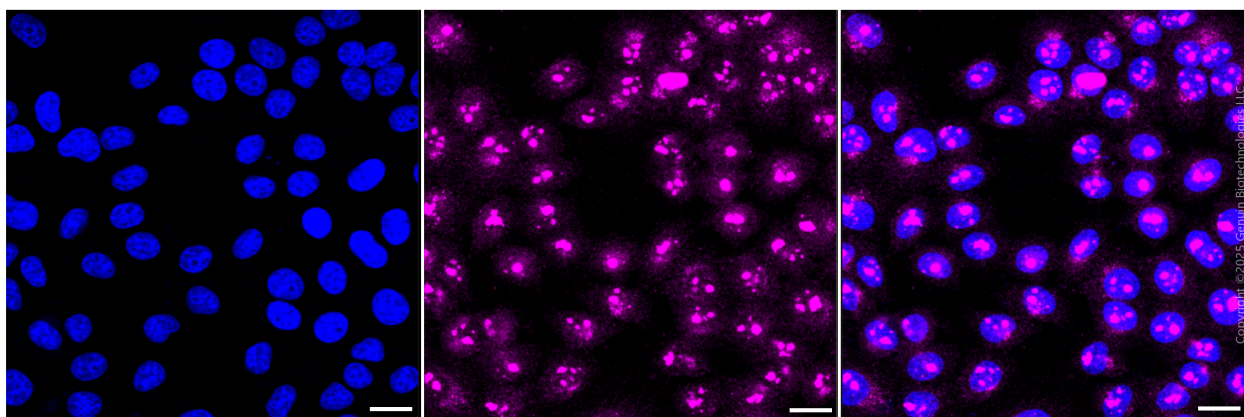
Note: This product is for research use only.

Validation Data



Copyright ©2024 Genuin Biotechnologies LLC

Flow cytometric analysis of Fibrillarin expression in HepG2 cells using Fibrillarin antibody (Cat#2047, 1:2,000). Green, isotype control; red, Fibrillarin.



Immunocytochemical staining of HepG2 cells with anti-Fibrillarin antibody (Cat#2047, 1:1000) . Nuclei were stained blue with DAPI; Fibrillarin was stained magenta with Alexa Fluor® 647.

SUPPORT

SUPPORT@GENUINBIOTECH.COM
TEL: +1-540-855-7041

ORDERS

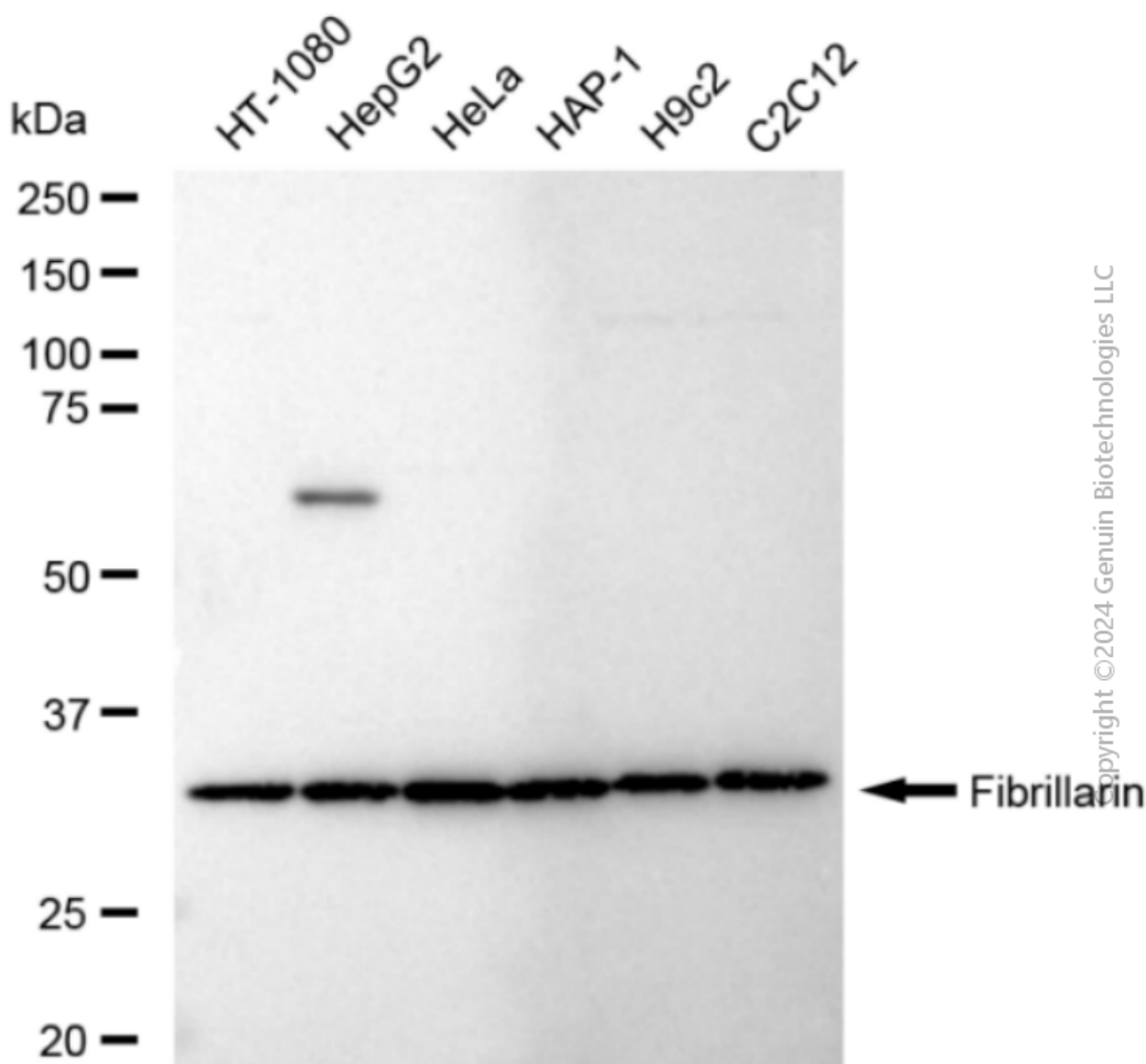
SALES@GENUINBIOTECH.COM
FAX: +1-540-855-7041

WWW.GENUINBIOTECH.COM

Anti-Fibrillarin Recombinant Rabbit Monoclonal Antibody

PAGE 3

Images were taken using Leica stellaris 5. Protein abundance based on laser Intensity and smart gain: Medium. Scale bar, 20 μ m.



Western blotting analysis using anti-Fibrillarin antibody (Cat#2047). Total cell lysates (30 μ g) from various cell lines were loaded and separated by SDS-PAGE. The blot was incubated with anti-Fibrillarin antibody (Cat#2047, 1:5,000) and HRP-conjugated goat anti-rabbit secondary antibody (Cat#201, 1:20,000) respectively. Image was developed using FeQ™ ECL Substrate Kit (Cat#226).

SUPPORT

SUPPORT@GENUINBIOTECH.COM
TEL: +1-540-855-7041

ORDERS

SALES@GENUINBIOTECH.COM
FAX: +1-540-855-7041

WWW.GENUINBIOTECH.COM