

Anti-Estrogen related receptor alpha Recombinant Rabbit Monoclonal Antibody



Catalog #: 2048

Aliases

ESRRA; Estrogen Related Receptor Alpha; NR3B1; ERR1; ESRL1; Nuclear Receptor Subfamily 3 Group B Member 1; Steroid Hormone Receptor ERR1; Estrogen Receptor-Like 1; ERR-Alpha; ERRalpha; ERRa; Estrogen-Related Nuclear Receptor Alpha; Estrogen-Related Receptor Alpha; ERRALPHA; ERRa

Background

Gene Name: ESRRA

NCBI Gene Entry: [2101](#)

UniProt Entry: [P11474](#)

Application Information

Molecular Weight: Predicted, 46 kDa; observed, 46 kDa

Clonality: Rabbit monoclonal antibody

Clone ID: 23GB5740

Species Reactivity: Human, mouse, rat

Applications Tested: Western blotting (WB), flow cytometry (FCM), immunocytochemistry (IC)

Immunogen

A synthesized peptide derived from human ERR alpha

Isotype

Rabbit IgG

Storage Buffer

Supplied in PBS (pH 7.4) containing 50% glycerol, and 0.02% sodium azide.

Storage

Store at -20 °C for one year.

Recommended Dilutions

Western Blotting (WB): 1:1,000-1:5,000

Flow Cytometry (FCM): 1:2,000

Immunocytochemistry (IC): 1:100-1:1,000

SUPPORT

SUPPORT@GENUINBIOTECH.COM
TEL: +1-540-855-7041

ORDERS

SALES@GENUINBIOTECH.COM
FAX: +1-540-855-7041

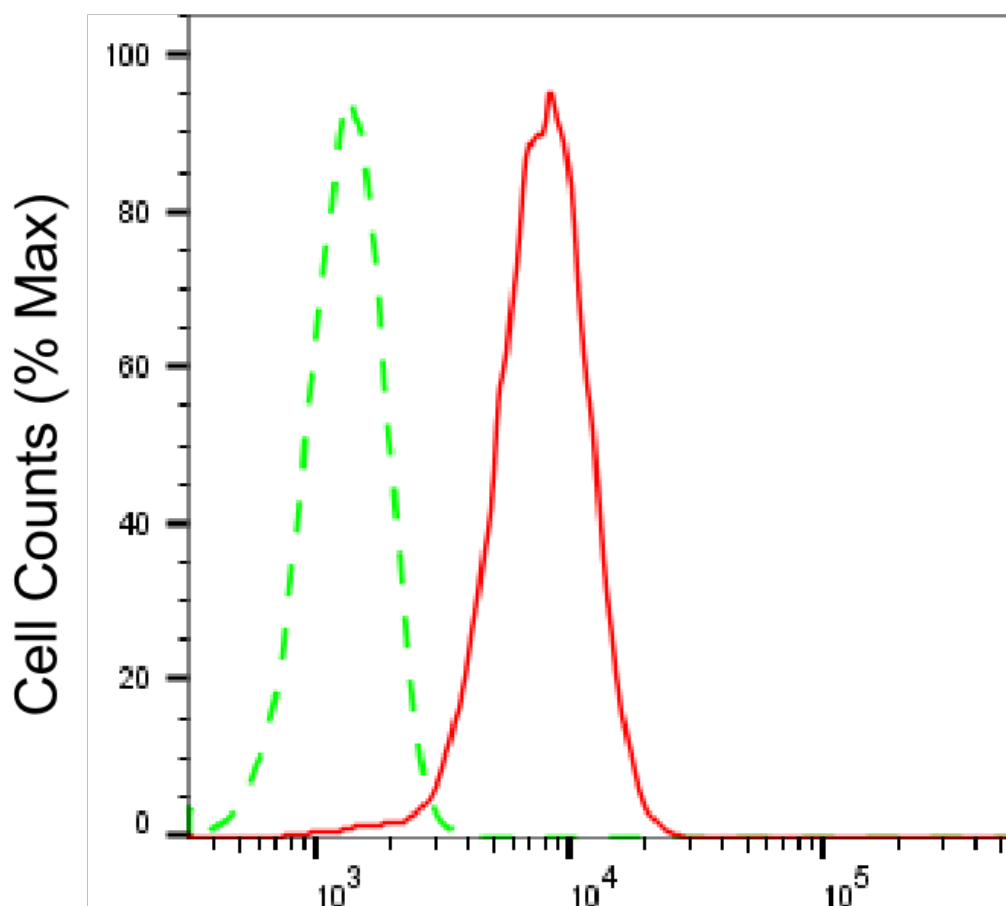
WWW.GENUINBIOTECH.COM

Anti-Estrogen related receptor alpha Recombinant Rabbit Monoclonal Antibody

PAGE 2

Note: This product is for research use only.

Validation Data



Copyright ©2025 Genuin Biotechnologies LLC

Estrogen related receptor alpha-Alexa Fluor® 647

Flow cytometric analysis of Estrogen related receptor alpha expression in HAP-1 cells using anti-Estrogen related receptor alpha antibody (Cat#2048, 1 μ g/2000). Green, isotype control; red, Estrogen related receptor alpha.

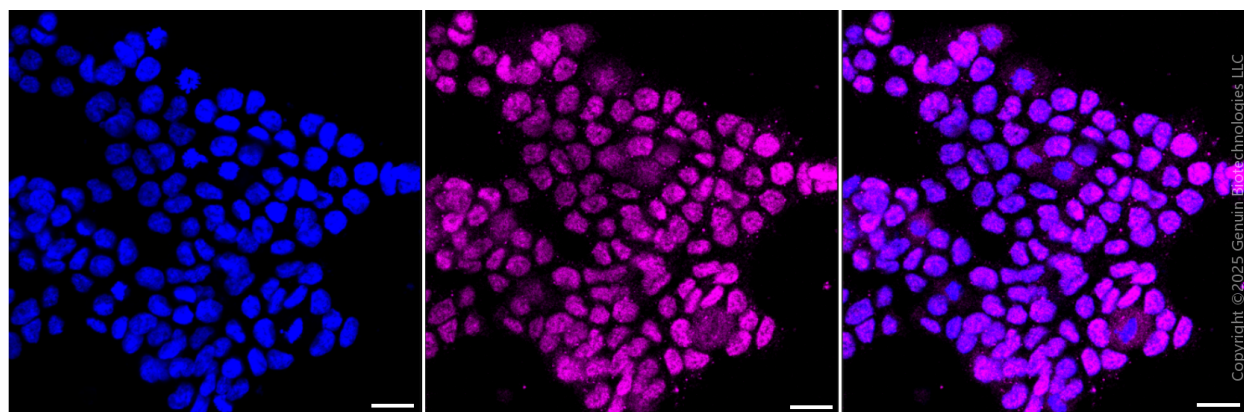
SUPPORT

SUPPORT@GENUINBIOTECH.COM
TEL: +1-540-855-7041

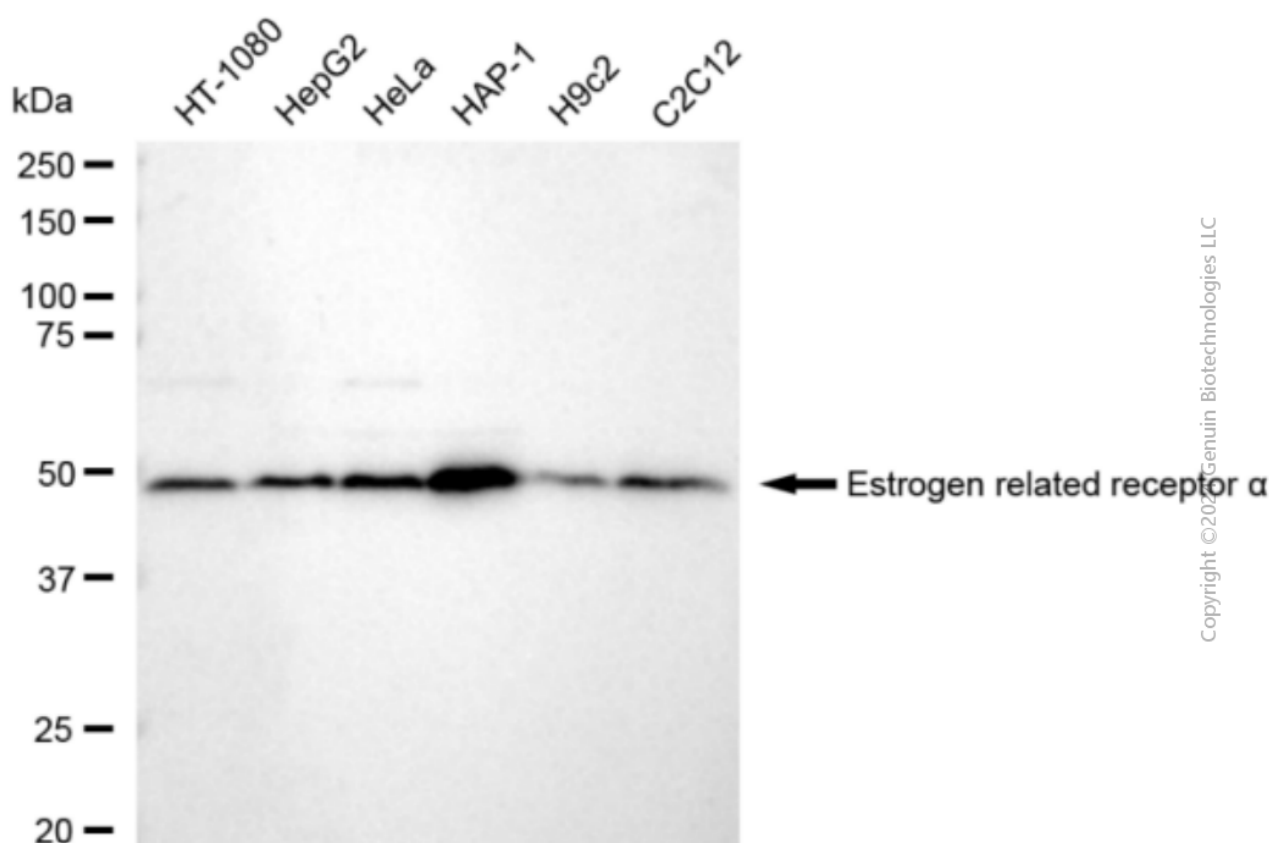
ORDERS

SALES@GENUINBIOTECH.COM
FAX: +1-540-855-7041

WWW.GENUINBIOTECH.COM



Immunocytochemical staining of HAP1 cells with anti-Estrogen related receptor alpha antibody (Cat #2048, 1:1,000) . Nuclei were stained blue with DAPI; Estrogen related receptor alpha was stained magenta with Alexa Fluor® 647. Images were taken using Leica stellaris 5. Protein abundance based on laser Intensity and smart gain: Medium. Scale bar, 20 µm.



Western blotting analysis using anti-Estrogen related receptor alpha antibody (Cat#2048). Total cell lysates (30 µg) from various cell lines were loaded and separated by SDS-PAGE. The blot was incubated with anti-Estrogen related receptor alpha antibody (Cat#2048, 1:5,000) and HRP-conjugated goat anti-rabbit secondary antibody (Cat#201, 1:20,000) respectively. Image was developed using FeQ™ ECL Substrate Kit (Cat#226).