

Anti-CDC42EP1 Recombinant Rabbit Monoclonal Antibody



Catalog #: 2049

Aliases

CDC42EP1; CDC42 Effector Protein 1; MSE55; CEP1; Binder Of Rho GTPases 5; BORG5; 55 KDa Bone Marrow Stromal/Endothelial Cell Protein; CDC42 Effector Protein (Rho GTPase Binding) 1; Serum Constituent Protein; Cdc42 Effector Protein 1; Serum Protein MSE55; Borg5

Background

Gene Name: CDC42EP1

NCBI Gene Entry: [11135](#)

UniProt Entry: [Q00587](#)

Application Information

Molecular Weight: Predicted, 40 kDa; observed, 60 kDa

Clonality: Rabbit monoclonal antibody

Clone ID: 23GB5745

Species Reactivity: Human

Applications Tested: Western blotting (WB), flow cytometry (FCM), immunocytochemistry (IC)

Immunogen

A synthesized peptide derived from human CDC42EP1

Isotype

Rabbit IgG

Storage Buffer

Supplied in PBS (pH 7.4) containing 50% glycerol, and 0.02% sodium azide.

Storage

Store at -20 °C for one year.

Recommended Dilutions

Western Blotting (WB): 1:1,000-1:5,000

Flow Cytometry (FCM): 1:2,000

Immunocytochemistry (IC): 1:100-1:1,000

Note: This product is for research use only.

SUPPORT

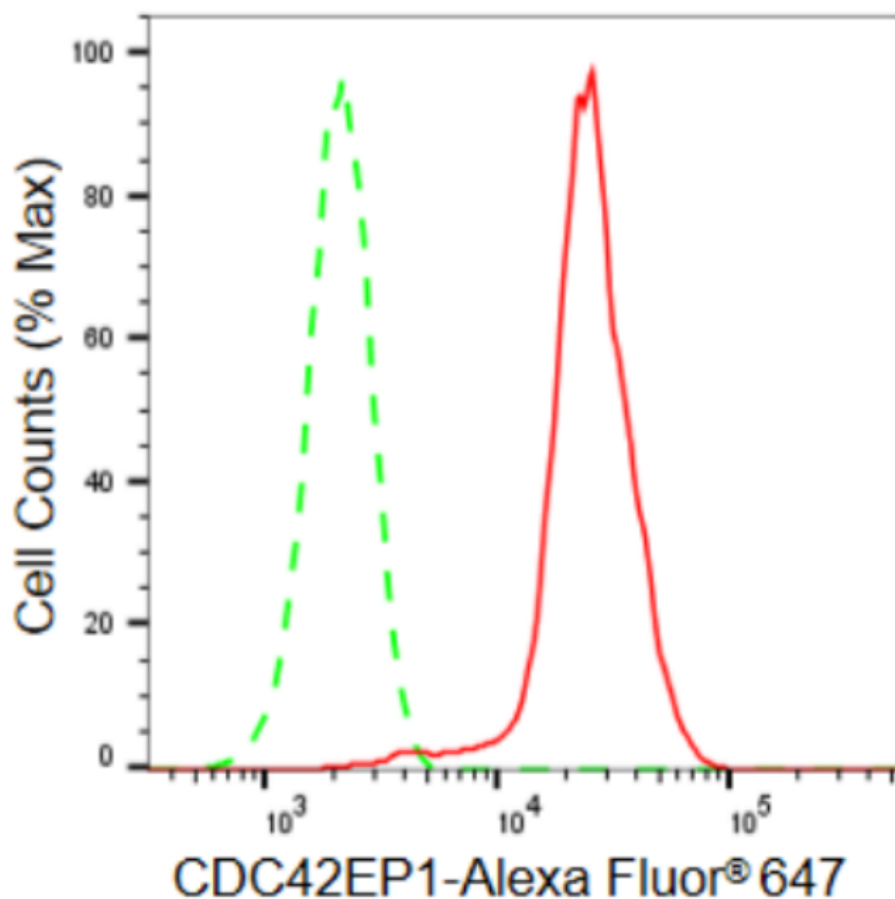
SUPPORT@GENUINBIOTECH.COM
TEL: +1-540-855-7041

ORDERS

SALES@GENUINBIOTECH.COM
FAX: +1-540-855-7041

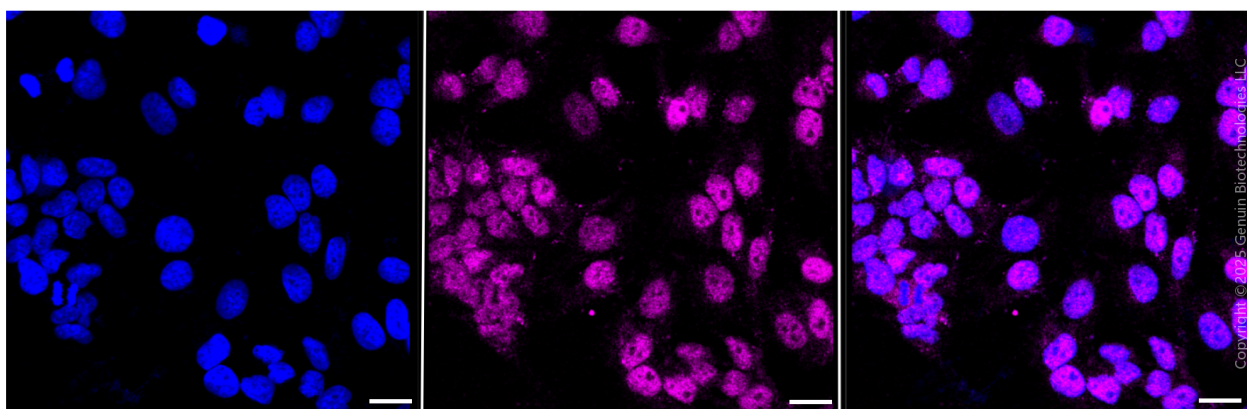
WWW.GENUINBIOTECH.COM

Validation Data



Copyright © 2024 Genuin Biotechnologies LLC

Flow cytometric analysis of CDC42EP1 expression in HeLa cells using CDC42EP1 antibody (Cat#2049, 1:2,000). Green, isotype control; red, CDC42EP1.



Copyright © 2024 Genuin Biotechnologies LLC

Immunocytochemical staining of HeLa cells with anti-CDC42EP1 antibody (Cat#2049, 1:1,000). Nuclei were stained blue with DAPI; CDC42EP1 was stained magenta with Alexa Fluor® 647. Images were taken using Leica stellaris 5. Protein abundance based on laser Intensity and smart

SUPPORT

SUPPORT@GENUINBIOTECH.COM
TEL: +1-540-855-7041

ORDERS

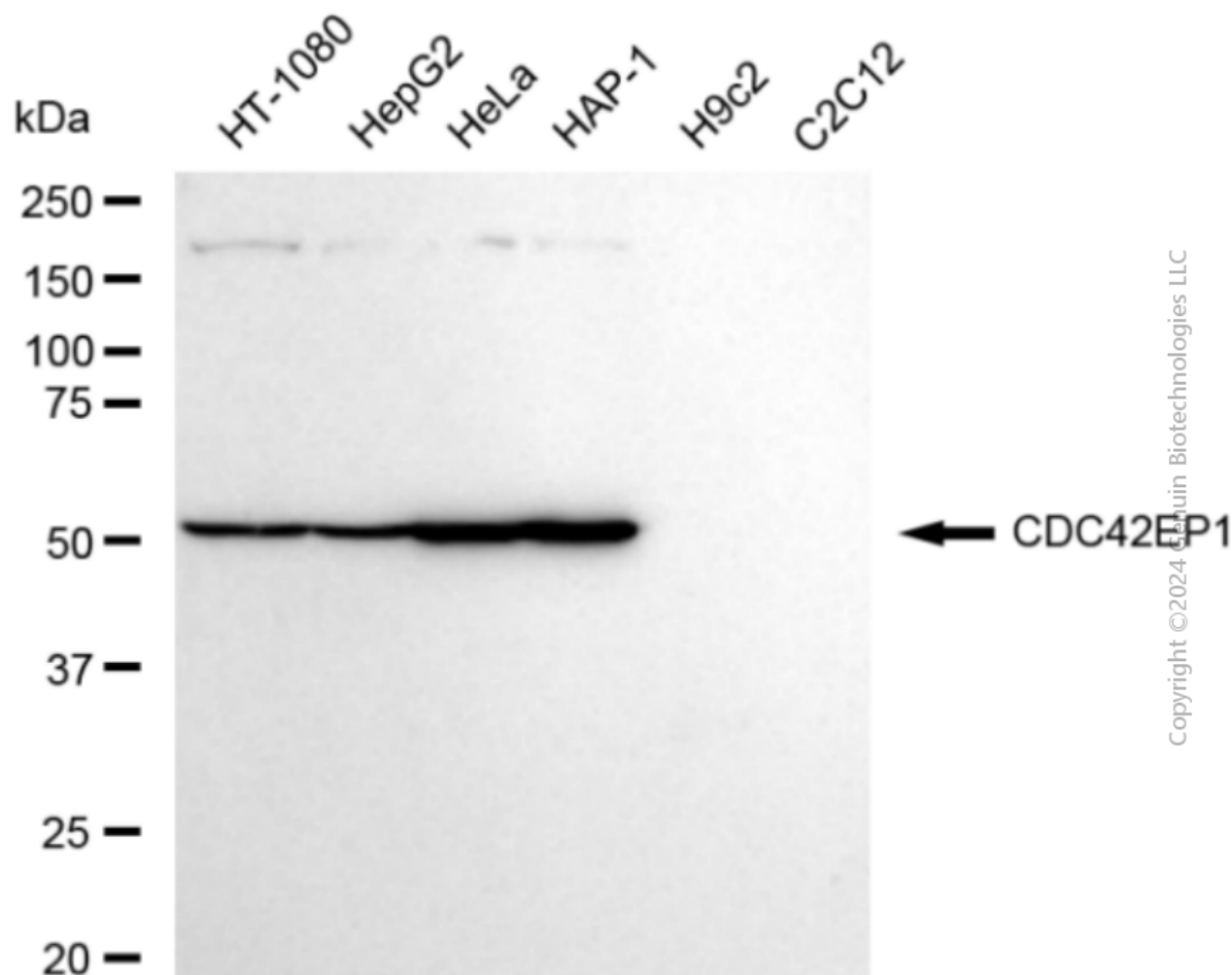
SALES@GENUINBIOTECH.COM
FAX: +1-540-855-7041

WWW.GENUINBIOTECH.COM

Anti-CDC42EP1 Recombinant Rabbit Monoclonal Antibody

PAGE 3

gain: Medium. Scale bar: 20 μ m.



Western blotting analysis using anti-CDC42EP1 antibody (Cat#2049). Total cell lysates (30 μ g) from various cell lines were loaded and separated by SDS-PAGE. The blot was incubated with anti-CDC42EP1 antibody (Cat#2049, 1:5,000) and HRP-conjugated goat anti-rabbit secondary antibody (Cat#201, 1:20,000) respectively. Image was developed using FeQ™ ECL Substrate Kit (Cat#226).

SUPPORT

SUPPORT@GENUINBIOTECH.COM
TEL: +1-540-855-7041

ORDERS

SALES@GENUINBIOTECH.COM
FAX: +1-540-855-7041

WWW.GENUINBIOTECH.COM