

Anti-Aromatase Recombinant Rabbit Monoclonal Antibody



Catalog #: 2054

Aliases

CYP19A1; Cytochrome P450 Family 19 Subfamily A Member; ARO; CYAR; P-450AROM; Aromatase; CYP19; CPV1; ARO; Cytochrome P450, Subfamily XIX (Aromatization Of Androgens); Cytochrome P450, Family 19, Subfamily A, Polypeptide 1; Cytochrome P-450AROM; Cytochrome P450 19A1; Estrogen Synthase; CYPXIX; Flavoprotein-Linked Monooxygenase; Microsomal Monooxygenase; Estrogen Synthetase; EC 1.14.14.14; EC 1.14.14.1; AROMATASE

Background

Gene Name: CYP19A1

NCBI Gene Entry: [1588](#)

UniProt Entry: [P11511](#)

Application Information

Molecular Weight: Predicted, 58 kDa; observed, 53 kDa

Clonality: Rabbit monoclonal antibody

Clone ID: 23GB5770

Species Reactivity: Human, mouse, rat

Applications Tested: Western blotting (WB), flow cytometry (FCM), immunocytochemistry (IC)

Immunogen

A synthesized peptide derived from human Aromatase

Isotype

Rabbit IgG

Storage Buffer

Supplied in PBS (pH 7.4) containing 50% glycerol, and 0.02% sodium azide.

Storage

Store at -20 °C for one year.

Recommended Dilutions

Western Blotting (WB): 1:1,000-1:5,000

Flow Cytometry (FCM): 1:2,000

Immunocytochemistry (IC): 1:100-1:1,000

SUPPORT

SUPPORT@GENUINBIOTECH.COM
TEL: +1-540-855-7041

ORDERS

SALES@GENUINBIOTECH.COM
FAX: +1-540-855-7041

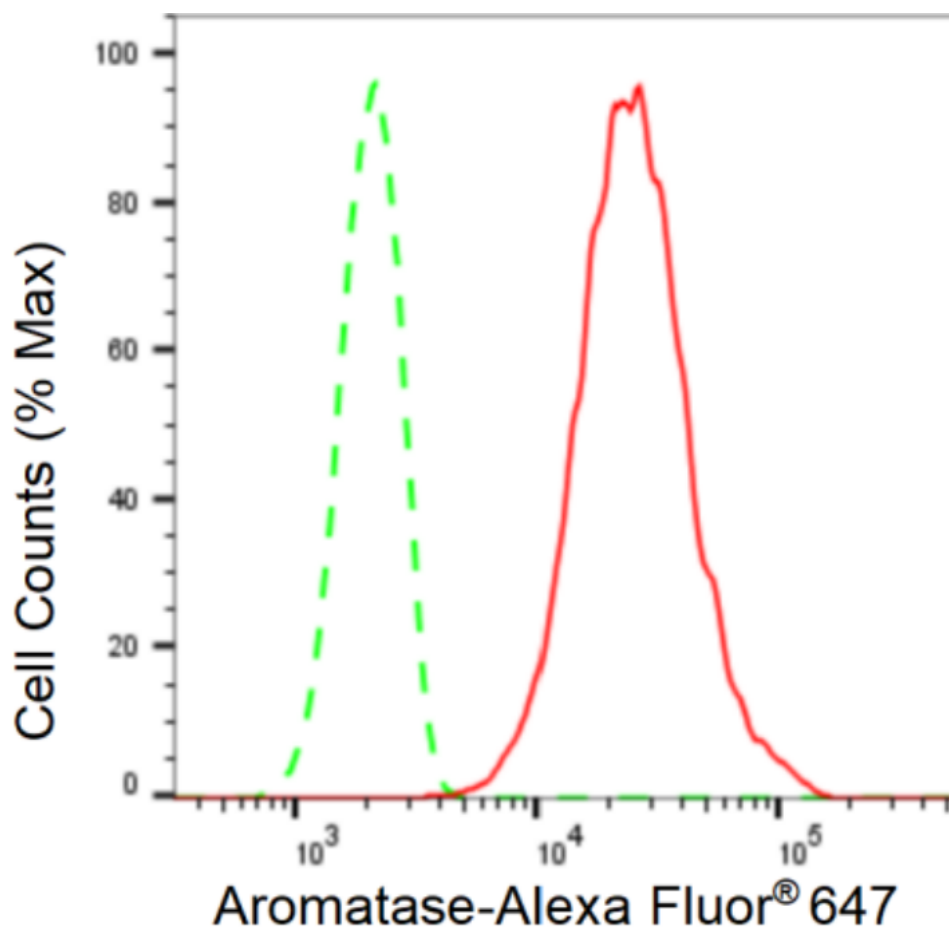
WWW.GENUINBIOTECH.COM

Anti-Aromatase Recombinant Rabbit Monoclonal Antibody

PAGE 2

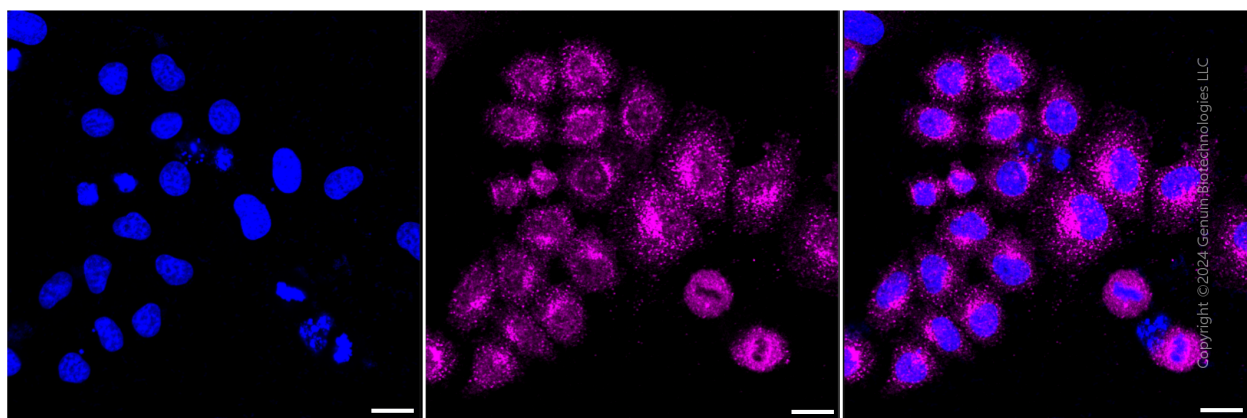
Note: This product is for research use only.

Validation Data



Copyright ©2024 Genuin Biotechnologies LLC

Flow cytometric analysis of Aromatase expression in HepG2 cells using Aromatase antibody (Cat#2054, 1:2,000). Green, isotype control; red, Aromatase.



Copyright ©2024 Genuin Biotechnologies LLC

Immunocytochemical staining of HepG2 cells with anti-Aromatase antibody (Cat#2054, 1:1,000).

SUPPORT

SUPPORT@GENUINBIOTECH.COM
TEL: +1-540-855-7041

ORDERS

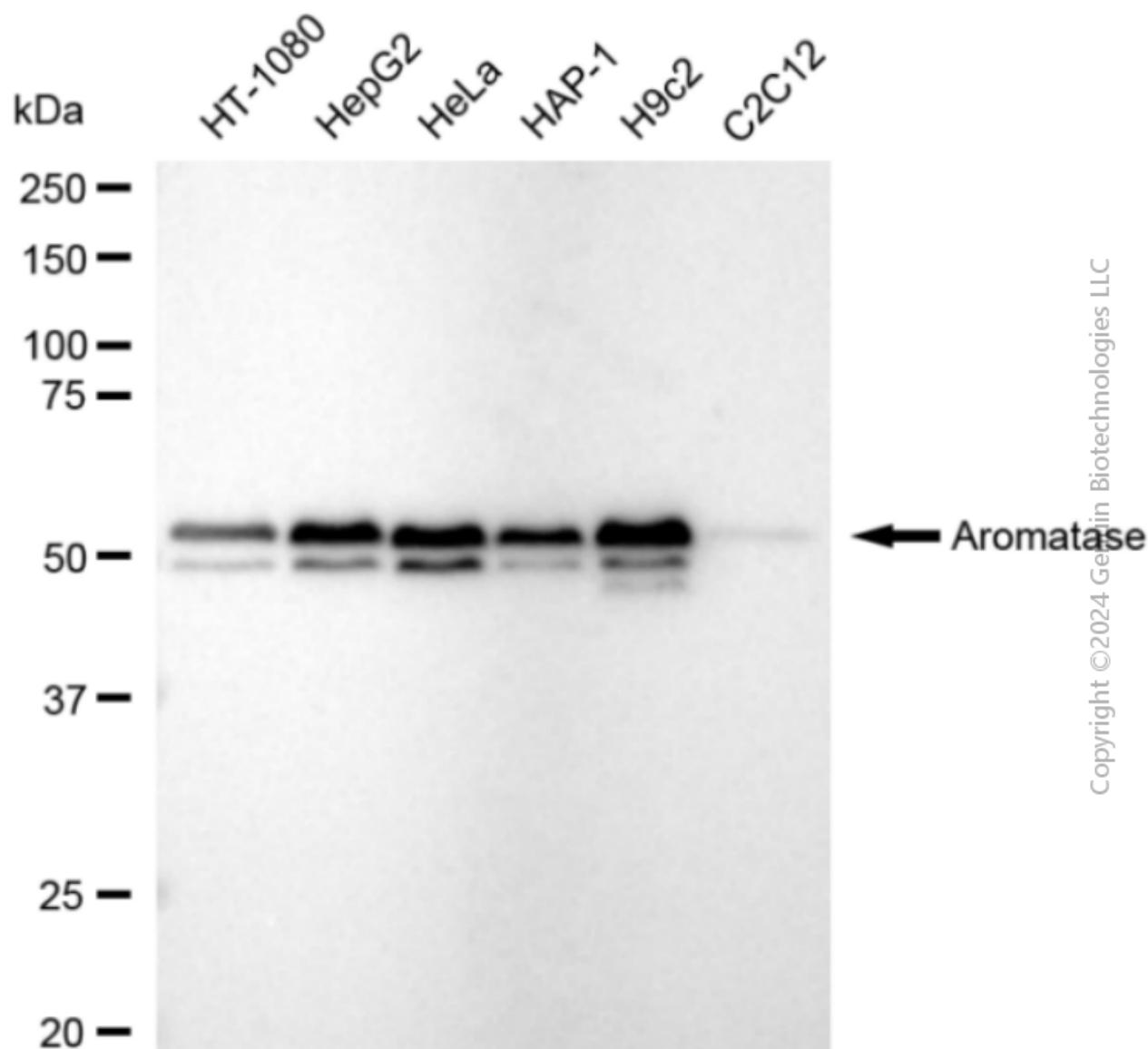
SALES@GENUINBIOTECH.COM
FAX: +1-540-855-7041

WWW.GENUINBIOTECH.COM

Anti-Aromatase Recombinant Rabbit Monoclonal Antibody

PAGE 3

Nuclei were stained blue with DAPI; Aromatase was stained magenta with Alexa Fluor® 647. Images were taken using Leica stellaris 5. Protein abundance based on laser Intensity and smart gain: Medium. Scale bar: 20 μ m.



Western blotting analysis using anti-Aromatase antibody (Cat#2054). Total cell lysates (30 μ g) from various cell lines were loaded and separated by SDS-PAGE. The blot was incubated with anti-Aromatase antibody (Cat#2054, 1:5,000) and HRP-conjugated goat anti-rabbit secondary antibody (Cat#201, 1:20,000) respectively. Image was developed using FeQ™ ECL Substrate Kit (Cat#226).

SUPPORT

SUPPORT@GENUINBIOTECH.COM
TEL: +1-540-855-7041

ORDERS

SALES@GENUINBIOTECH.COM
FAX: +1-540-855-7041

WWW.GENUINBIOTECH.COM