

Anti-GBA Recombinant Rabbit Monoclonal Antibody



Catalog #: 2055

Aliases

GBA1; Glucosylceramidase Beta 1GLUC; GBA; D-Glucosyl-N-Acylsphingosine Glucohydrolase; Lysosomal Cholesterol Glycosyltransferase; Lysosomal Acid Glucosylceramidase; Cholesterol Glucosyltransferase; Lysosomal Galactosylceramidase; Cholesteryl-Beta-Glucosidase; Lysosomal Glycosylceramidase; Beta-Glucosylceramidase; Glucosidase, Beta, Acid; Beta-Glucocerebrosidase; Acid Beta-Glucosidase; Lysosomal Acid GCase; Glucocerebrosidase; Imiglucerase; Alglucerase; EC 3.2.1.45; Beta-GC; SGTase; Glucosidase, Beta; Acid (Includes Glucosylceramidase); Glucosylceramidase-Like Protein; Lysosomal Glucocerebrosidase; Glucosylceramidase Beta; Glucosylceramidase; EC 3.2.1.46; EC 2.4.1.-; EC 3.2.1.-; GCB; GC

Background

Gene Name: GBA1

NCBI Gene Entry: [2629](#)

UniProt Entry: [P04062](#)

Application Information

Molecular Weight: Predicted, 60 kDa; observed, 70 kDa

Clonality: Rabbit monoclonal antibody

Clone ID: 23GB5775

Species Reactivity: Human, mouse, rat

Applications Tested: Western blotting (WB), flow cytometry (FCM), immunocytochemistry (IC)

Immunogen

A synthesized peptide derived from human GBA

Isotype

Rabbit IgG

Storage Buffer

Supplied in PBS (pH 7.4) containing 50% glycerol, and 0.02% sodium azide.

Storage

Store at -20 °C for one year.

Recommended Dilutions

Western Blotting (WB): 1:1,000-1:5,000

SUPPORT

SUPPORT@GENUINBIOTECH.COM
TEL: +1-540-855-7041

ORDERS

SALES@GENUINBIOTECH.COM
FAX: +1-540-855-7041

WWW.GENUINBIOTECH.COM

Anti-GBA Recombinant Rabbit Monoclonal Antibody

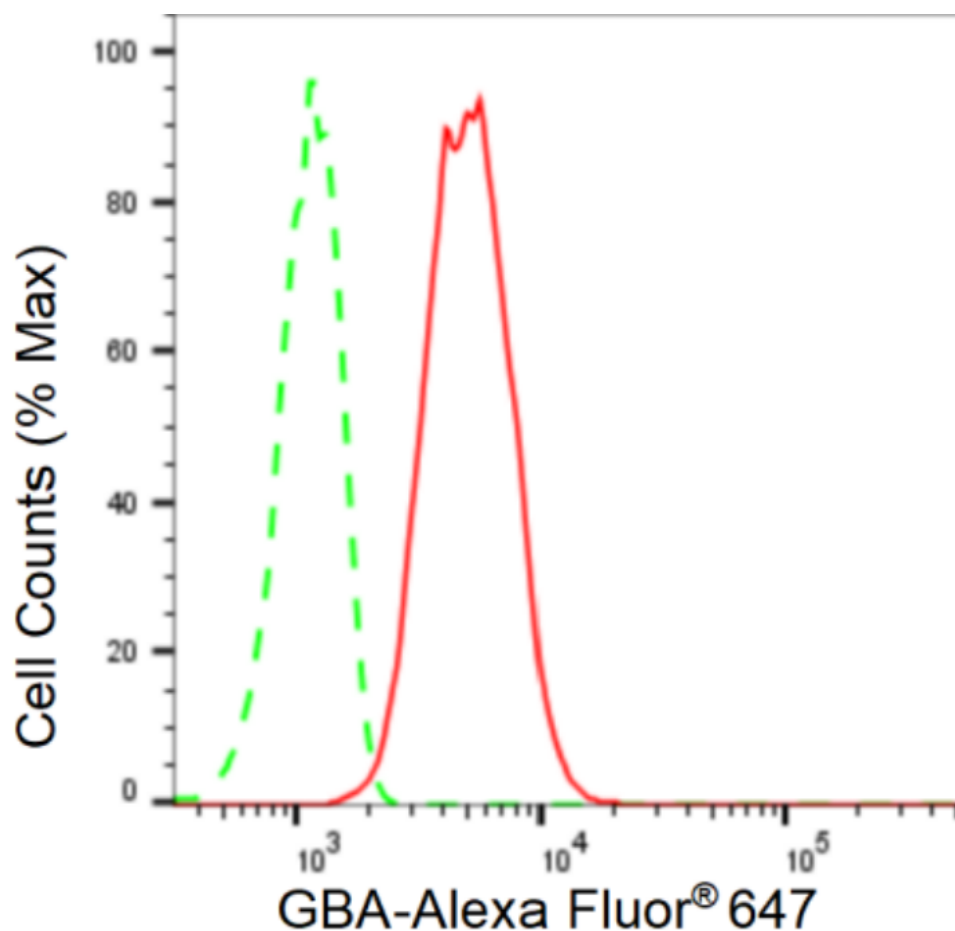
PAGE 2

Flow Cytometry (FCM): 1:2,000

Immunocytochemistry (IC): 1:100-1:1,000

Note: This product is for research use only.

Validation Data



Copyright ©2024 Genuin Biotechnologies LLC

Flow cytometric analysis of GBA expression in C2C12 cells using GBA antibody (Cat#2055, 1:2,000). Green, isotype control; red, GBA.

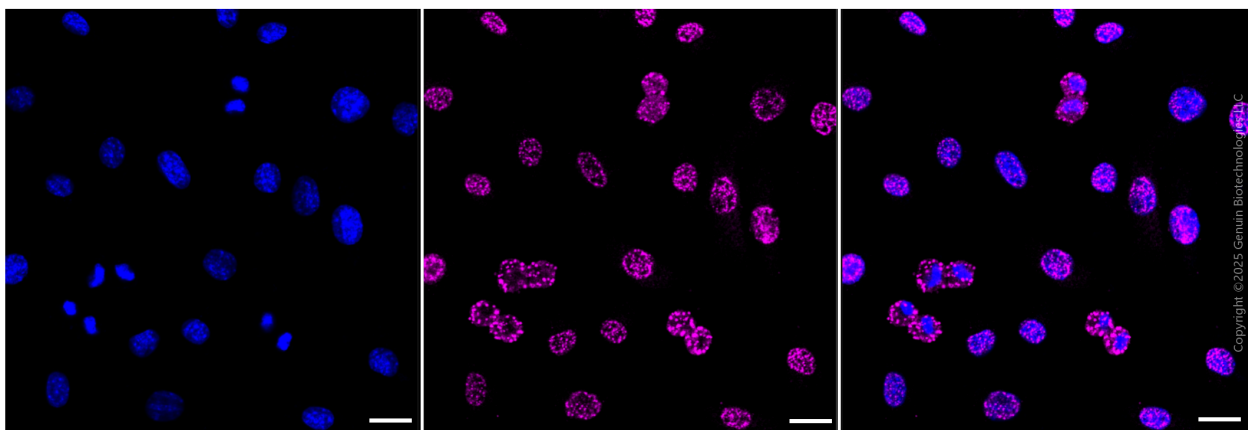
SUPPORT

SUPPORT@GENUINBIOTECH.COM
TEL: +1-540-855-7041

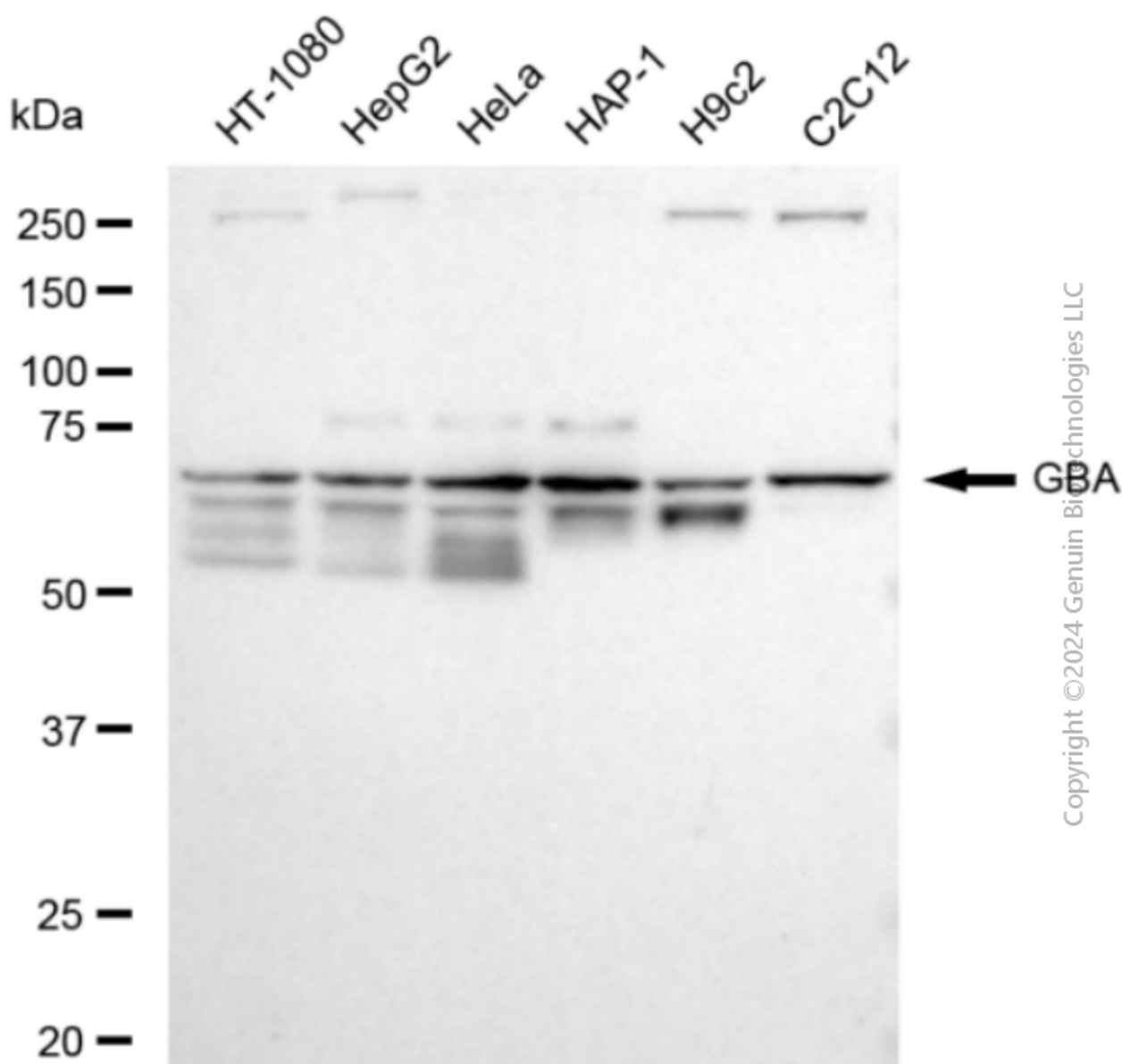
ORDERS

SALES@GENUINBIOTECH.COM
FAX: +1-540-855-7041

WWW.GENUINBIOTECH.COM



Immunocytochemical staining of HepG2 cells with anti-GBA antibody (Cat#2055, 1:1,000) . Nuclei were stained blue with anti-DAPI; GBA was stained magenta with Alexa Fluor® 647. Images were taken using Leica stellaris 5. Protein abundance based on laser Intensity and smart gain: High. Scale bar, 20 μ m.



Western blotting analysis using anti-GBA antibody (Cat#2055). Total cell lysates (30 µg) from various cell lines were loaded and separated by SDS-PAGE. The blot was incubated with anti-GBA antibody (Cat#2055, 1:5,000) and HRP-conjugated goat anti-rabbit secondary antibody (Cat#201, 1:20,000) respectively. Image was developed using FeQ™ ECL Substrate Kit (Cat#226).