

Catalog #: 2060

Aliases

CYP2D6; Cytochrome P450 Family 2 Subfamily D Member 6; P450-DB1; P450C2D; CYP2DL1; CYP2D; CPD6; Cytochrome P450, Subfamily IID (Debrisoquine, Sparteine, Etc., -Metabolising), Polypeptide 8 Pseudogene 2; Cytochrome P450, Subfamily II (Debrisoquine, Sparteine, Etc., -Metabolising), Polypeptide 7 Pseudogene 2; Cytochrome P450, Subfamily IID (Debrisoquine, Sparteine, Etc., -Metabolizing), Polypeptide 6; Cytochrome P450, Family 2, Subfamily D, Polypeptide 7 Pseudogene 2; Cytochrome P450, Family 2, Subfamily D, Polypeptide 8 Pseudogene 2; Cytochrome P450, Family 2, Subfamily D, Polypeptide 6; Cholesterol 25-Hydroxylase; Debrisoquine 4-Hydroxylase; Cytochrome P450 2D6; Cytochrome P450-DB1; CYP2D7AP; CYP2D7BP; CYP2D7P2; CYP2D8P2; CYP2D6; Cytochrome P450, Subfamily IID (Debrisoquine, Sparteine, Etc., -Metabolizing)-Like 1; Flavoprotein-Linked Monooxygenase; Nonfunctional Cytochrome P450 2D6; Microsomal Monooxygenase; Xenobiotic Monooxygenase; EC 1.14.14.-; EC 1.14.14.1; P450DB1

Background

Gene Name: CYP2D6

NCBI Gene Entry: [1565](#)

UniProt Entry: [P10635](#)

Application Information

Molecular Weight: Predicted, 56 kDa; observed, 50,80 kDa

Clonality: Rabbit monoclonal antibody

Clone ID: 23GB5800

Species Reactivity: Human, mouse, rat

Applications Tested: Western blotting (WB), flow cytometry (FCM), immunocytochemistry (IC)

Immunogen

A synthesized peptide derived from human Cytochrome P450 2D6

Isotype

Rabbit IgG

Storage Buffer

Supplied in PBS (pH 7.4) containing 50% glycerol, and 0.02% sodium azide.

Storage

SUPPORT

SUPPORT@GENUINBIOTECH.COM
TEL: +1-540-855-7041

ORDERS

SALES@GENUINBIOTECH.COM
FAX: +1-540-855-7041

WWW.GENUINBIOTECH.COM

Anti-CYP2D6 Recombinant Rabbit Monoclonal Antibody

PAGE 2

Store at -20 °C for one year.

Recommended Dilutions

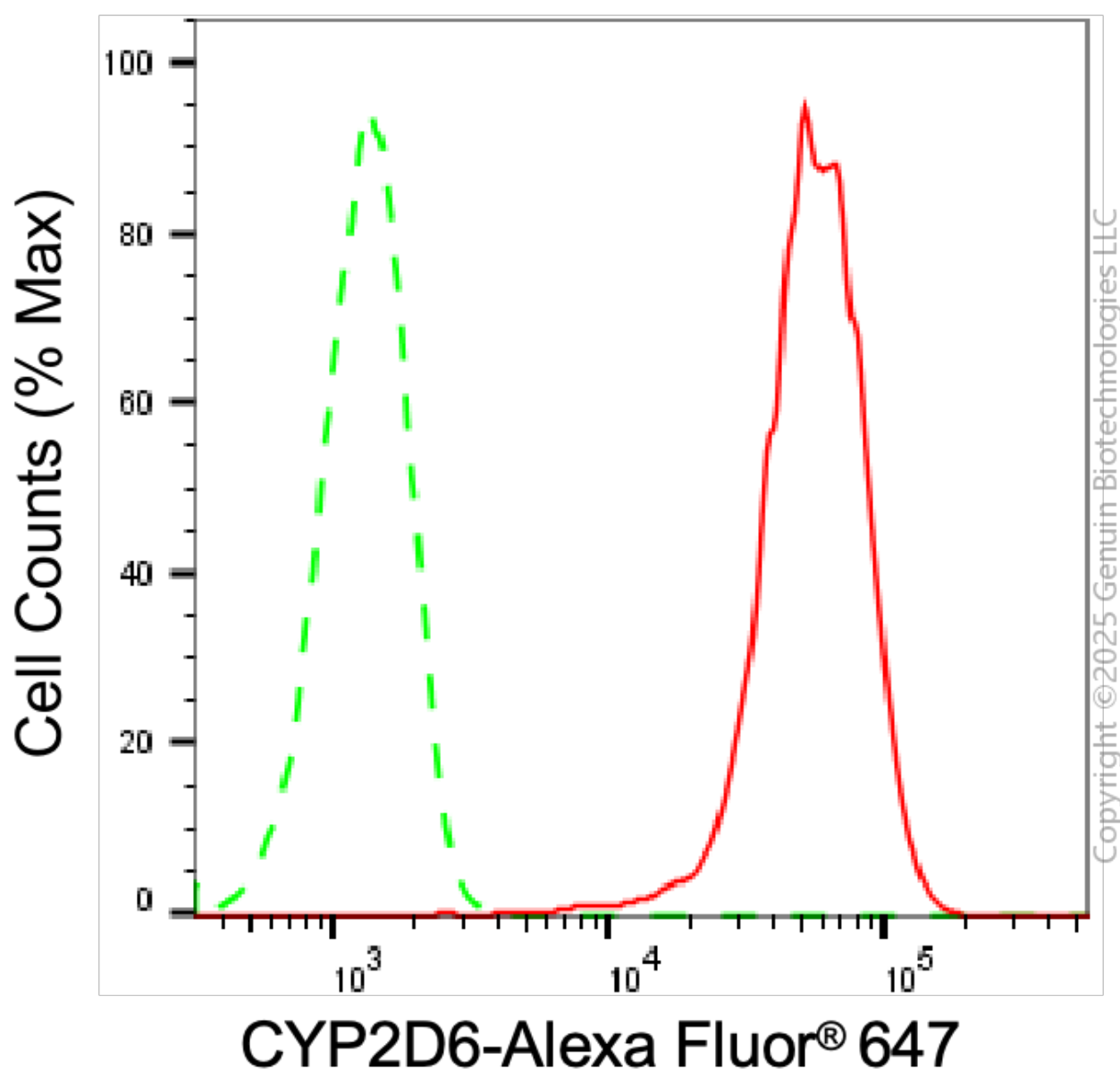
Western Blotting (WB): 1:1,000-1:5,000

Flow Cytometry (FCM): 1:2,000

Immunocytochemistry (IC): 1:100-1:1,000

Note: This product is for research use only.

Validation Data



Flow cytometric analysis of CYP2D6 expression in HAP-1 cells using anti-CYP2D6 antibody

SUPPORT

SUPPORT@GENUINBIOTECH.COM
TEL: +1-540-855-7041

ORDERS

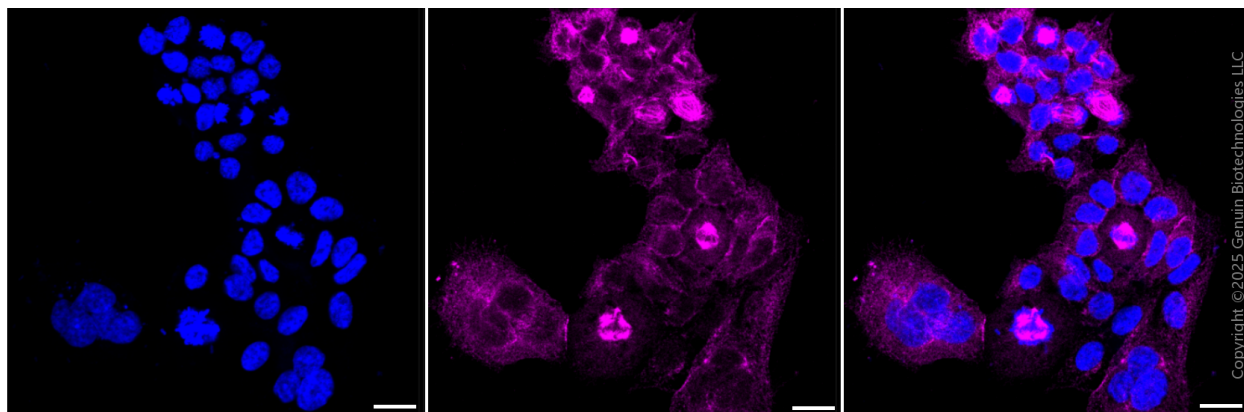
SALES@GENUINBIOTECH.COM
FAX: +1-540-855-7041

WWW.GENUINBIOTECH.COM

Anti-CYP2D6 Recombinant Rabbit Monoclonal Antibody

PAGE 3

(Cat#2060, 1:2000). Green, isotype control; red, CYP2D6.



Immunocytochemical staining of HAP1 cells with anti-CYP2D6 antibody (Cat #2060, 1:1,000) . Nuclei were stained blue with DAPI; CYP2D6 was stained magenta with Alexa Fluor® 647. Images were taken using Leica stellaris 5. Protein abundance based on laser Intensity and smart gain: High. Scale bar, 20 μ m.

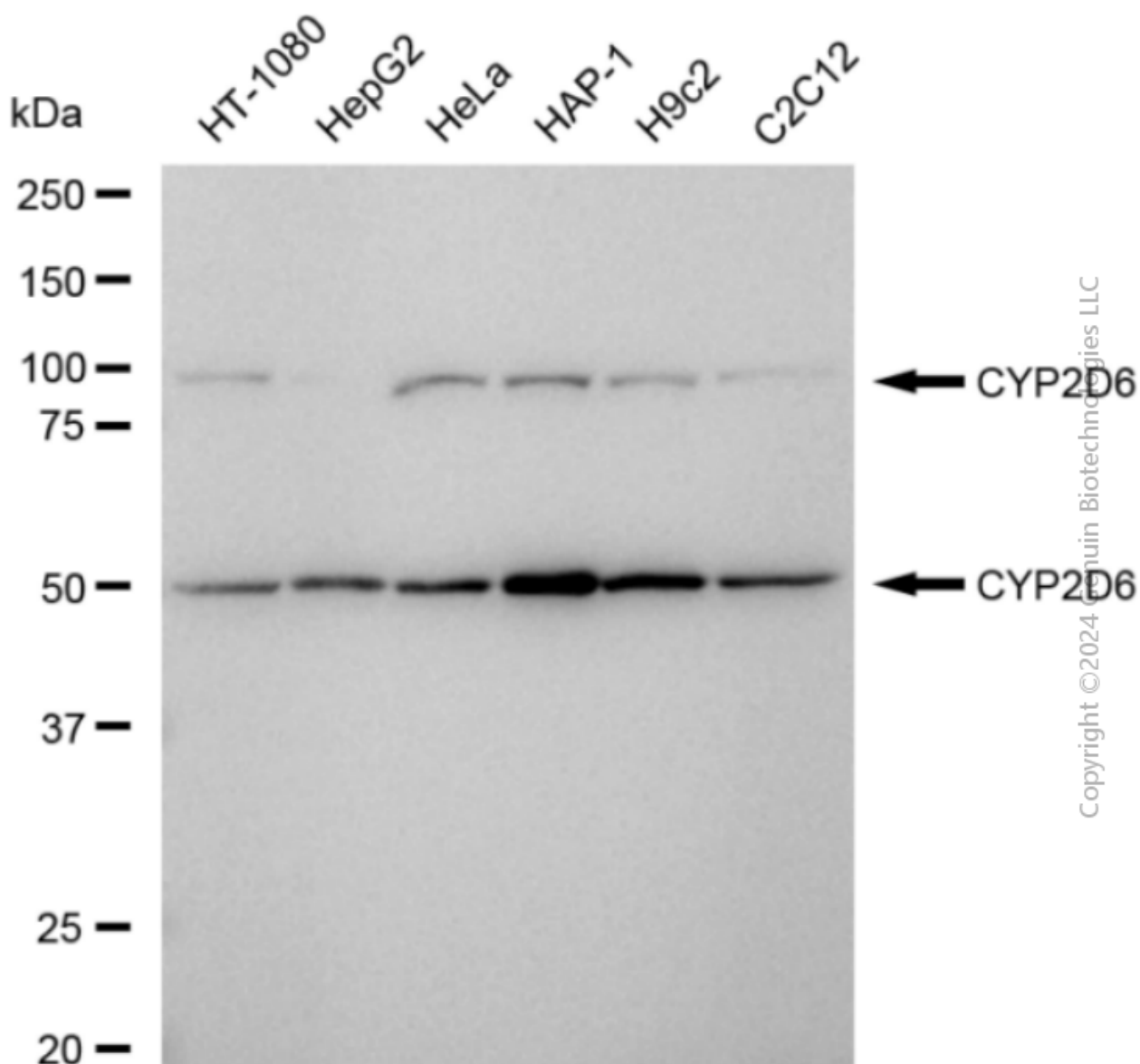
SUPPORT

SUPPORT@GENUINBIOTECH.COM
TEL: +1-540-855-7041

ORDERS

SALES@GENUINBIOTECH.COM
FAX: +1-540-855-7041

WWW.GENUINBIOTECH.COM



Western blotting analysis using anti-CYP2D6 antibody (Cat#2060). Total cell lysates (30 μ g) from various cell lines were loaded and separated by SDS-PAGE. The blot was incubated with anti-CYP2D6 antibody (Cat#2060, 1:5,000) and HRP-conjugated goat anti-rabbit secondary antibody (Cat#201, 1:20,000) respectively. Image was developed using FeQ™ ECL Substrate Kit (Cat#226).