

# Anti-CD33 Recombinant Rabbit Monoclonal Antibody



**Catalog #: 2062**

## Aliases

CD33; CD33 Molecule; SIGLEC3; SIGLEC-3; P67; Sialic Acid-Binding Ig-Like Lectin 3; Myeloid Cell Surface Antigen CD33; CD33 Antigen (Gp67); FLJ00391; Gp67; Sialic Acid Binding Ig-Like Lectin 3; CD33 Molecule Transcript; CD33 Antigen; Siglec-3

## Background

Gene Name: CD33

NCBI Gene Entry: [945](#)

UniProt Entry: [P20138](#)

## Application Information

Molecular Weight: Predicted, 40 kDa; observed, 65 kDa

Clonality: Rabbit monoclonal antibody

Clone ID: 23GB5810

Species Reactivity: Human, mouse, rat

Applications Tested: Western blotting (WB), immunocytochemistry (IC)

## Immunogen

A synthesized peptide derived from human CD33

## Isotype

Rabbit IgG

## Storage Buffer

Supplied in PBS (pH 7.4) containing 50% glycerol, and 0.02% sodium azide.

## Storage

Store at -20 °C for one year.

## Recommended Dilutions

Western Blotting (WB): 1:1,000-1:5,000

Immunocytochemistry (IC): 1:100-1:1,000

**Note:** This product is for research use only.

## Validation Data

---

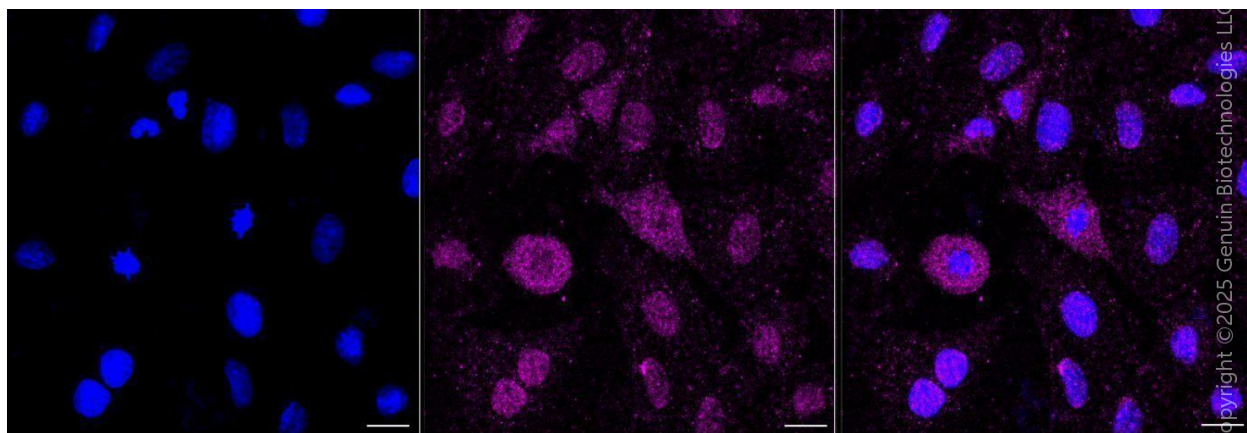
### SUPPORT

SUPPORT@GENUINBIOTECH.COM  
TEL: +1-540-855-7041

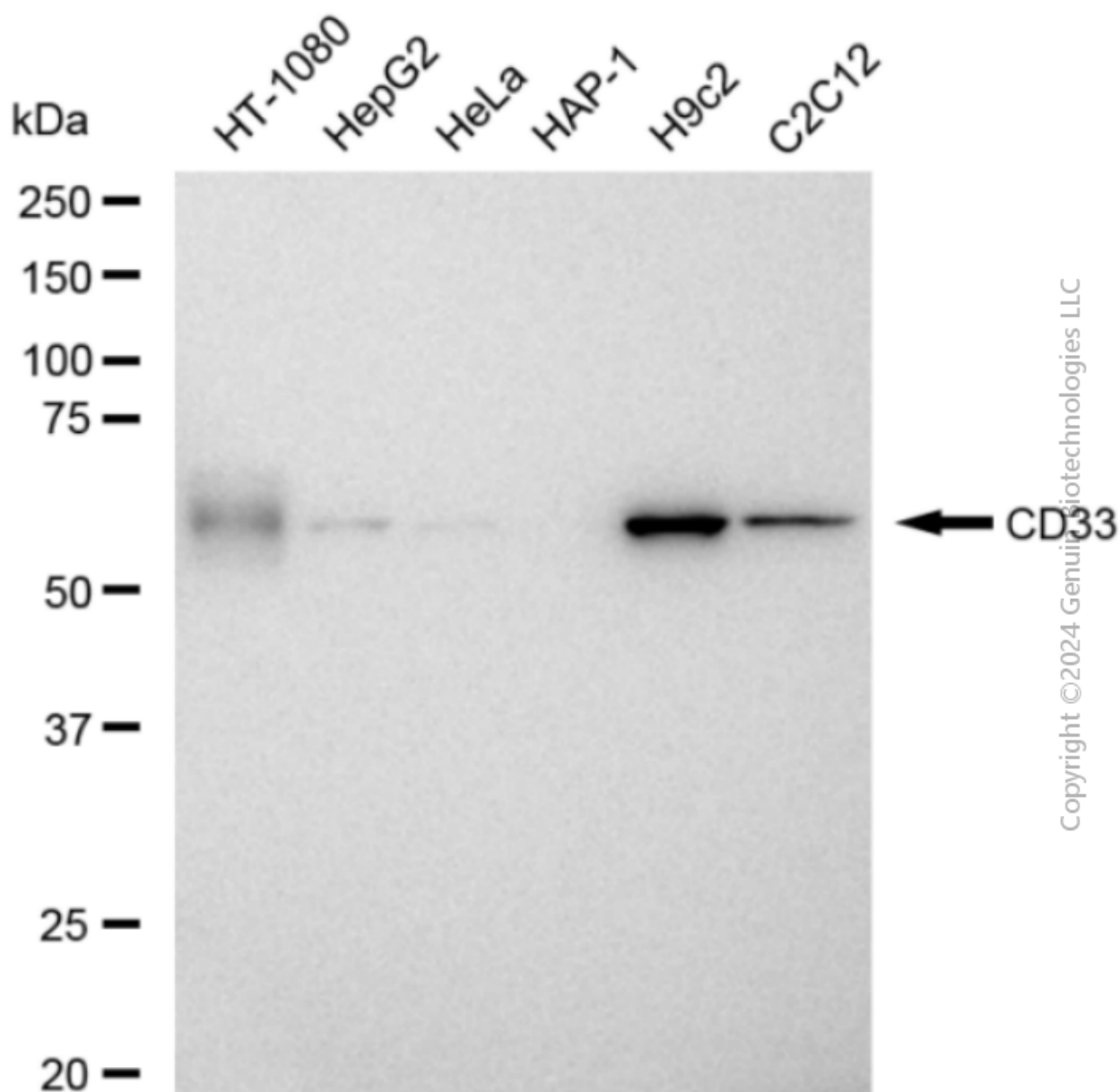
### ORDERS

SALES@GENUINBIOTECH.COM  
FAX: +1-540-855-7041

[WWW.GENUINBIOTECH.COM](http://WWW.GENUINBIOTECH.COM)



Immunocytochemical staining of H9c2 cells with anti-CD33 antibody (Cat#2062, 1:1,000) . Nuclei were stained blue with DAPI; CD33 was stained magenta with Alexa Fluor® 647. Images were taken using Leica stellaris 5. Protein abundance based on laser Intensity and smart gain: Medium. Scale bar, 20  $\mu$ m.



Western blotting analysis using anti-CD33 antibody (Cat#2062). Total cell lysates (30  $\mu$ g) from various cell lines were loaded and separated by SDS-PAGE. The blot was incubated with anti-CD33 antibody (Cat#2062, 1:5,000) and HRP-conjugated goat anti-rabbit secondary antibody (Cat#201, 1:20,000) respectively. Image was developed using FeQ™ ECL Substrate Kit (Cat#226).