

# Anti-Glucokinase Recombinant Rabbit Monoclonal Antibody



**Catalog #: 2069**

## Aliases

GCK; Glucokinase; HK4; Glucokinase (Hexokinase 4); Hexokinase Type IV; Hexokinase-4; MODY2; HK IV; Maturity Onset Diabetes Of The Young 2; ATP:D-Hexose 6-Phosphotransferase; Hexokinase D, Pancreatic Isozyme; Hexokinase 4; Hexokinase-D; EC 2.7.1.1; EC 2.7.1; FGQTL3; PNDM1; HHF3; HKIV; HXKP; LGLK; GLK; GK

## Background

Gene Name: GCK

NCBI Gene Entry: [2645](#)

UniProt Entry: [P35557](#)

## Application Information

Molecular Weight: Predicted, 52 kDa; observed, 52 kDa

Clonality: Rabbit monoclonal antibody

Clone ID: 23GB5845

Species Reactivity: Human

Applications Tested: Western blotting (WB), flow cytometry (FCM), immunocytochemistry (IC)

## Immunogen

A synthesized peptide derived from human Glucokinase

## Isotype

Rabbit IgG

## Storage Buffer

Supplied in PBS (pH 7.4) containing 50% glycerol, and 0.02% sodium azide.

## Storage

Store at -20 °C for one year.

## Recommended Dilutions

Western Blotting (WB): 1:1,000-1:5,000

Flow Cytometry (FCM): 1:2,000

Immunocytochemistry (IC): 1:100-1:1,000

---

### SUPPORT

SUPPORT@GENUINBIOTECH.COM  
TEL: +1-540-855-7041

### ORDERS

SALES@GENUINBIOTECH.COM  
FAX: +1-540-855-7041

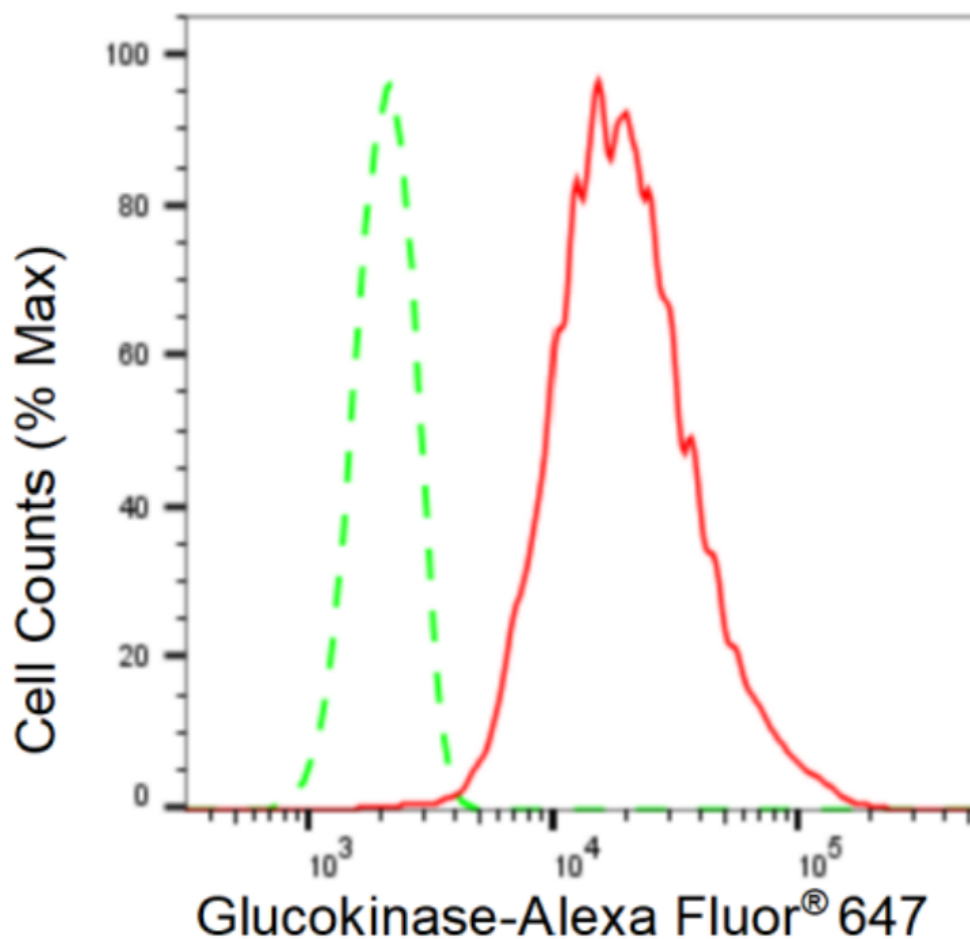
[WWW.GENUINBIOTECH.COM](http://WWW.GENUINBIOTECH.COM)

# Anti-Glucokinase Recombinant Rabbit Monoclonal Antibody

PAGE 2

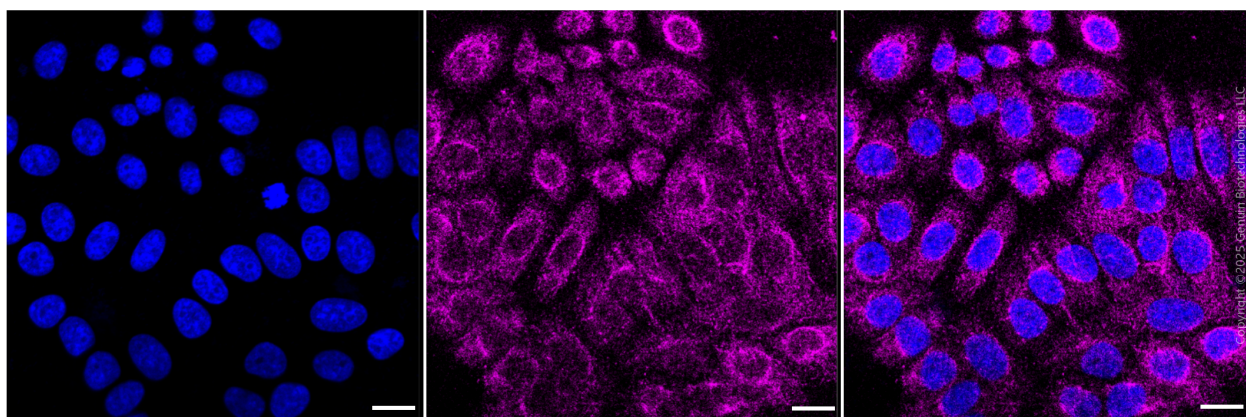
**Note:** This product is for research use only.

## Validation Data



Copyright ©2024 Genuin Biotechnologies LLC

Flow cytometric analysis of Glucokinase expression in HepG2 cells using Glucokinase antibody (Cat#2069, 1:2,000). Green, isotype control; red, Glucokinase.



Immunocytochemical staining of HepG2 cells with anti-Glucokinase antibody (Cat#2069, 1:1,000). Nuclei were stained blue with DAPI; Glucokinase was stained magenta with Alexa

### SUPPORT

SUPPORT@GENUINBIOTECH.COM  
TEL: +1-540-855-7041

### ORDERS

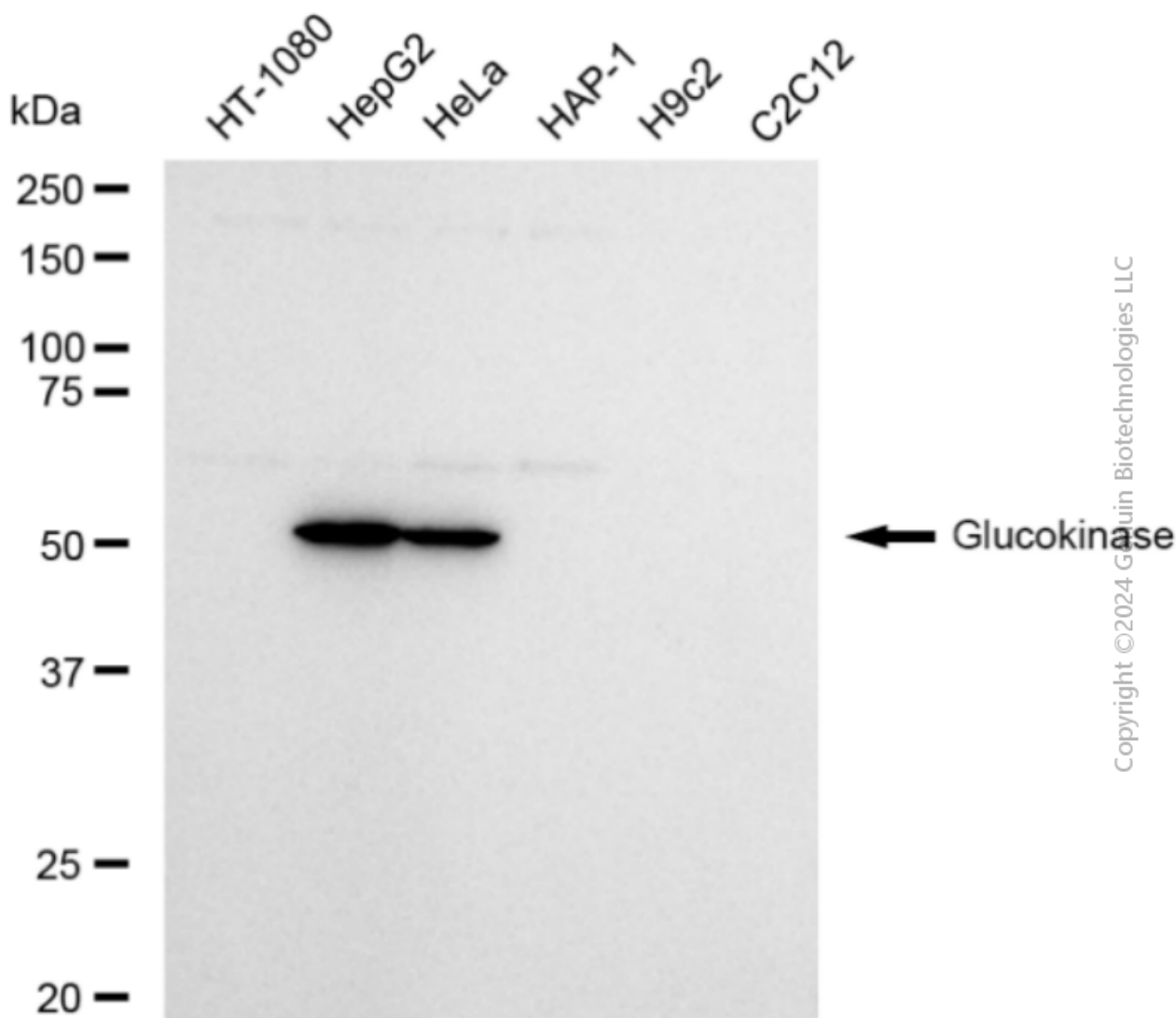
SALES@GENUINBIOTECH.COM  
FAX: +1-540-855-7041

WWW.GENUINBIOTECH.COM

## Anti-Glucokinase Recombinant Rabbit Monoclonal Antibody

PAGE 3

Fluor® 647. Images were taken using Leica stellaris 5. Protein abundance based on laser Intensity and smart gain: Low. Scale bar, 20  $\mu$ m.



Western blotting analysis using anti-Glucokinase antibody (Cat#2069). Total cell lysates (30  $\mu$ g) from various cell lines were loaded and separated by SDS-PAGE. The blot was incubated with anti-Glucokinase antibody (Cat#2069, 1:5,000) and HRP-conjugated goat anti-rabbit secondary antibody (Cat#201, 1:20,000) respectively. Image was developed using FeQ™ ECL Substrate Kit (Cat#226).

### SUPPORT

SUPPORT@GENUINBIOTECH.COM  
TEL: +1-540-855-7041

### ORDERS

SALES@GENUINBIOTECH.COM  
FAX: +1-540-855-7041

[WWW.GENUINBIOTECH.COM](http://WWW.GENUINBIOTECH.COM)