

# Anti-F2RL1 Recombinant Rabbit Monoclonal Antibody



**Catalog #: 2070**

## Aliases

F2RL1; F2R Like Trypsin Receptor 1; PAR2; GPR11; Coagulation Factor II (Thrombin) Receptor-Like 1; Proteinase-Activated Receptor; G-Protein Coupled Receptor 11; Thrombin Receptor-Like 1; Coagulation Factor II Receptor-Like 1; Proteinase-Activated Receptor-2; Protease-Activated Receptor 2; PAR-2

## Background

Gene Name: F2RL1

NCBI Gene Entry: [2150](#)

UniProt Entry: [P55085](#)

## Application Information

Molecular Weight: Predicted, 44 kDa; observed, 55 kDa

Clonality: Rabbit monoclonal antibody

Clone ID: 23GB5850

Species Reactivity: Human, mouse, rat

Applications Tested: Western blotting (WB), flow cytometry (FCM), immunocytochemistry (IC)

## Immunogen

A synthesized peptide derived from human PAR2

## Isotype

Rabbit IgG

## Storage Buffer

Supplied in PBS (pH 7.4) containing 50% glycerol, and 0.02% sodium azide.

## Storage

Store at -20 °C for one year.

## Recommended Dilutions

Western Blotting (WB): 1:1,000-1:5,000

Flow Cytometry (FCM): 1:2,000

Immunocytochemistry (IC): 1:100-1:1,000

---

### SUPPORT

SUPPORT@GENUINBIOTECH.COM  
TEL: +1-540-855-7041

### ORDERS

SALES@GENUINBIOTECH.COM  
FAX: +1-540-855-7041

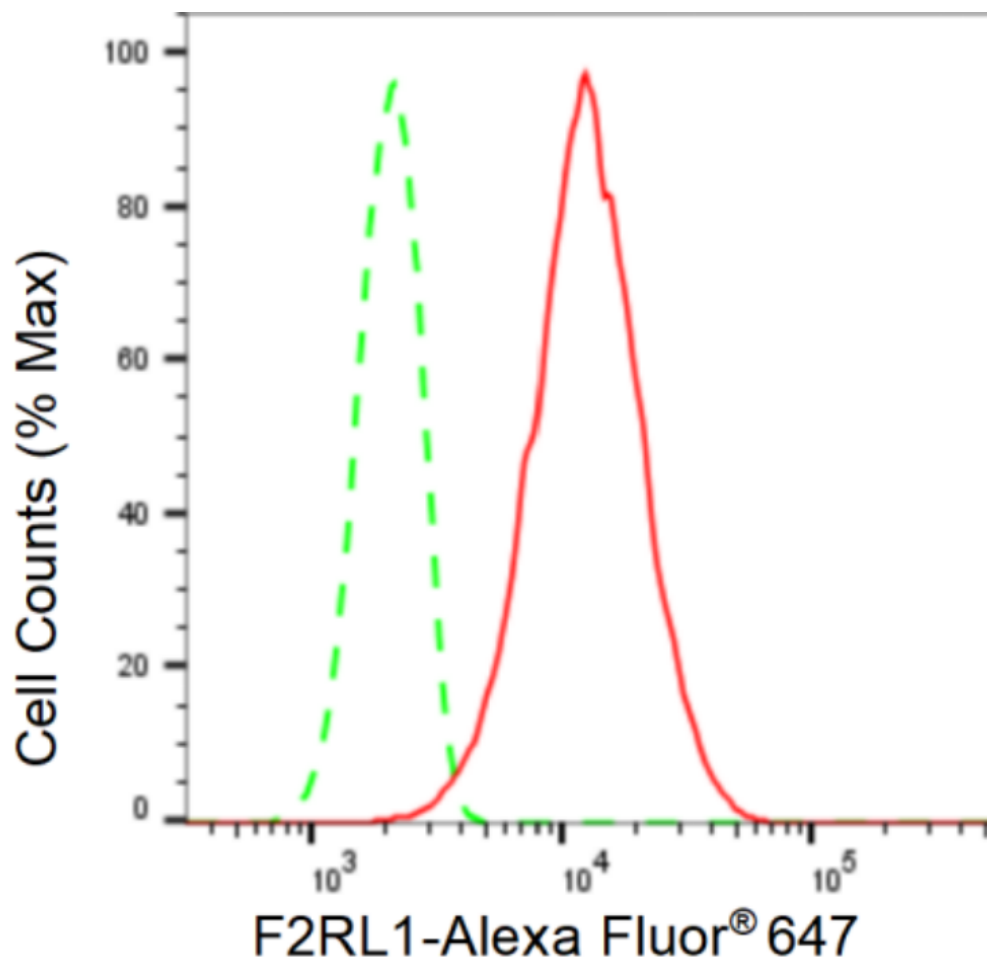
[WWW.GENUINBIOTECH.COM](http://WWW.GENUINBIOTECH.COM)

# Anti-F2RL1 Recombinant Rabbit Monoclonal Antibody

PAGE 2

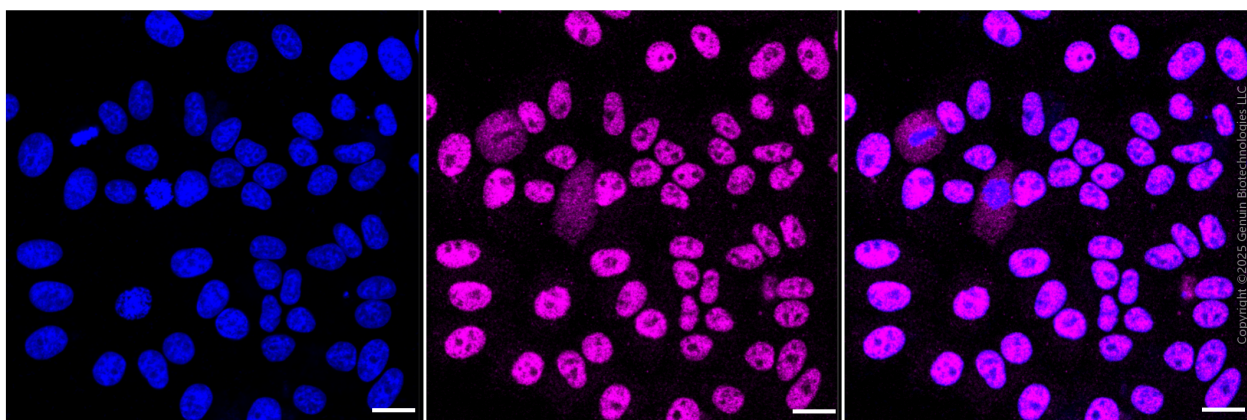
**Note:** This product is for research use only.

## Validation Data



Copyright ©2024 Genuin Biotechnologies LLC

Flow cytometric analysis of F2RL1 expression in HepG2 cells using F2RL1 antibody (Cat#2070, 1:2,000). Green, isotype control; red, F2RL1.



Copyright ©2025 Genuin Biotechnologies LLC

Immunocytochemical staining of HepG2 cells with anti-F2RL1 antibody (Cat#2070, 1:1,000).

### SUPPORT

SUPPORT@GENUINBIOTECH.COM  
TEL: +1-540-855-7041

### ORDERS

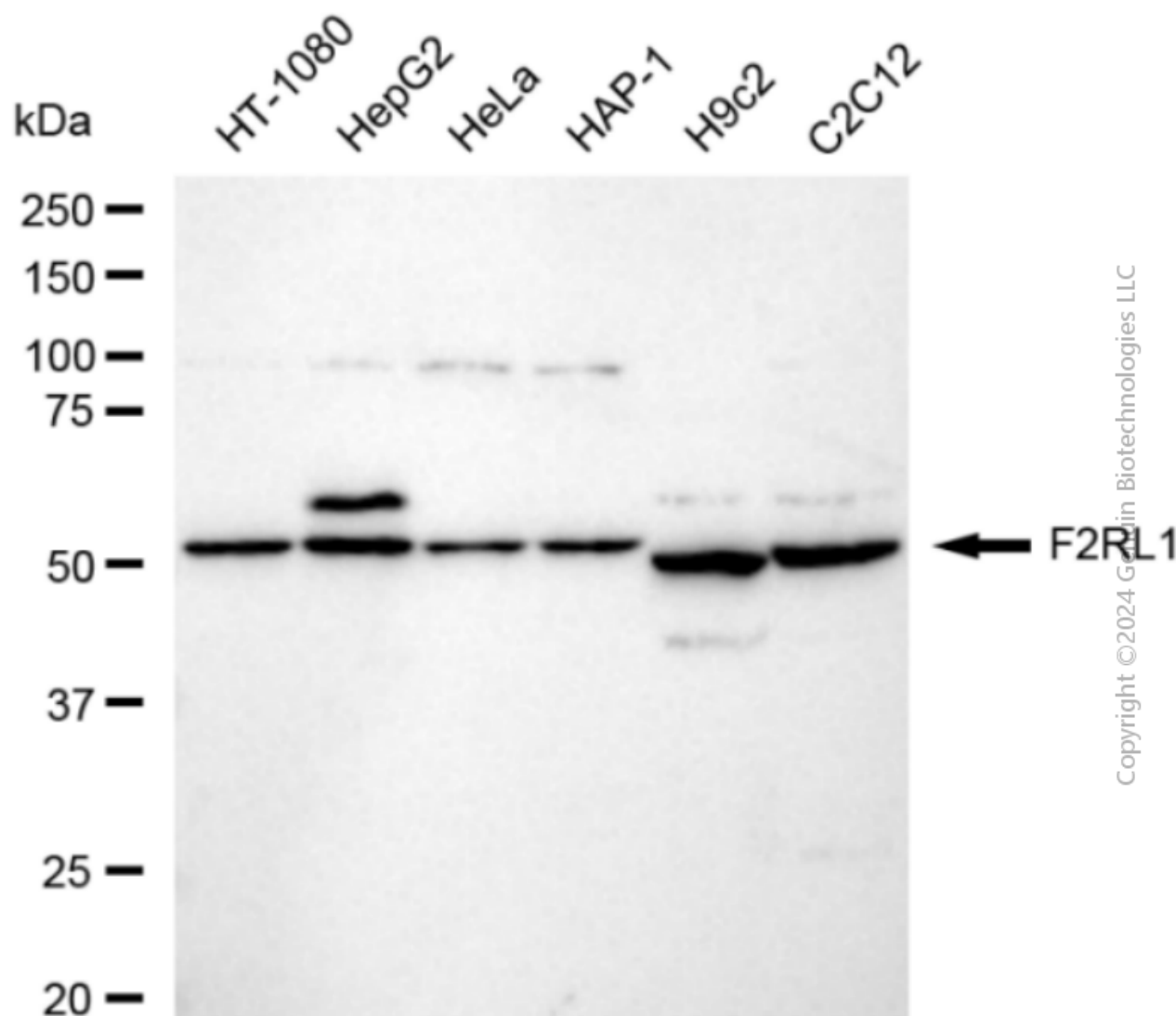
SALES@GENUINBIOTECH.COM  
FAX: +1-540-855-7041

WWW.GENUINBIOTECH.COM

## Anti-F2RL1 Recombinant Rabbit Monoclonal Antibody

PAGE 3

Nuclei were stained blue with DAPI; F2RL1 was stained magenta with Alexa Fluor® 647. Images were taken using Leica stellaris 5. Protein abundance based on laser Intensity and smart gain: Medium. Scale bar, 20  $\mu$ m.



Western blotting analysis using anti-F2RL1 antibody (Cat#2070). Total cell lysates (30  $\mu$ g) from various cell lines were loaded and separated by SDS-PAGE. The blot was incubated with anti-F2RL1 antibody (Cat#2070, 1:5,000) and HRP-conjugated goat anti-rabbit secondary antibody (Cat#201, 1:20,000) respectively. Image was developed using FeQ™ ECL Substrate Kit (Cat#226).

### SUPPORT

SUPPORT@GENUINBIOTECH.COM  
TEL: +1-540-855-7041

### ORDERS

SALES@GENUINBIOTECH.COM  
FAX: +1-540-855-7041

WWW.GENUINBIOTECH.COM