

Anti-FHL2 Recombinant Rabbit Monoclonal Antibody



Catalog #: 2072

Aliases

FHL2; Four And A Half LIM Domains 2; SLIM3; DRAL; Four And A Half LIM Domains Protein; Skeletal Muscle LIM-Protein 3; LIM Domain Protein DRAL; SLIM-3; FHL-2; Down-Regulated In Rhabdomyosarcoma LIM Protein; Aging-Associated Gene 11; AAG11

Background

Gene Name: FHL2

NCBI Gene Entry: [2274](#)

UniProt Entry: [Q14192](#)

Application Information

Molecular Weight: Predicted, 32 kDa; observed, 32 kDa

Clonality: Rabbit monoclonal antibody

Clone ID: 23GB5860

Species Reactivity: Human, mouse, rat

Applications Tested: Western blotting (WB), flow cytometry (FCM), immunocytochemistry (IC)

Immunogen

A synthesized peptide derived from human FHL2

Isotype

Rabbit IgG

Storage Buffer

Supplied in PBS (pH 7.4) containing 50% glycerol, and 0.02% sodium azide.

Storage

Store at -20 °C for one year.

Recommended Dilutions

Western Blotting (WB): 1:1,000-1:5,000

Flow Cytometry (FCM): 1:2,000

Immunocytochemistry (IC): 1:100-1:1,000

Note: This product is for research use only.

SUPPORT

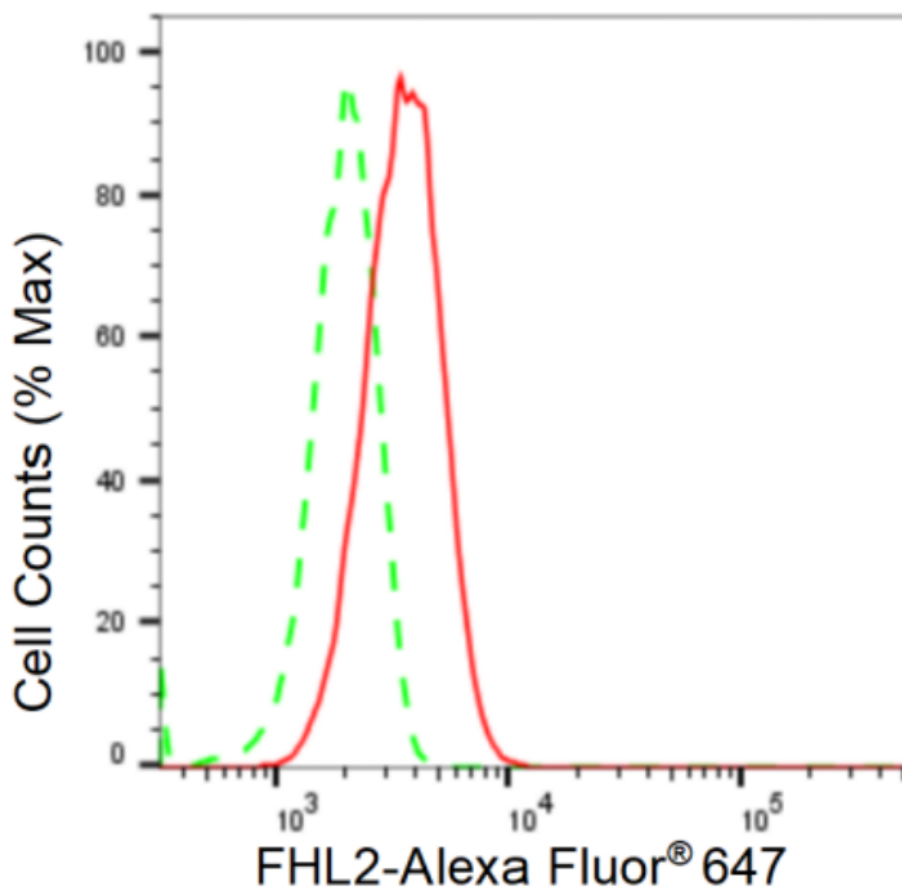
SUPPORT@GENUINBIOTECH.COM
TEL: +1-540-855-7041

ORDERS

SALES@GENUINBIOTECH.COM
FAX: +1-540-855-7041

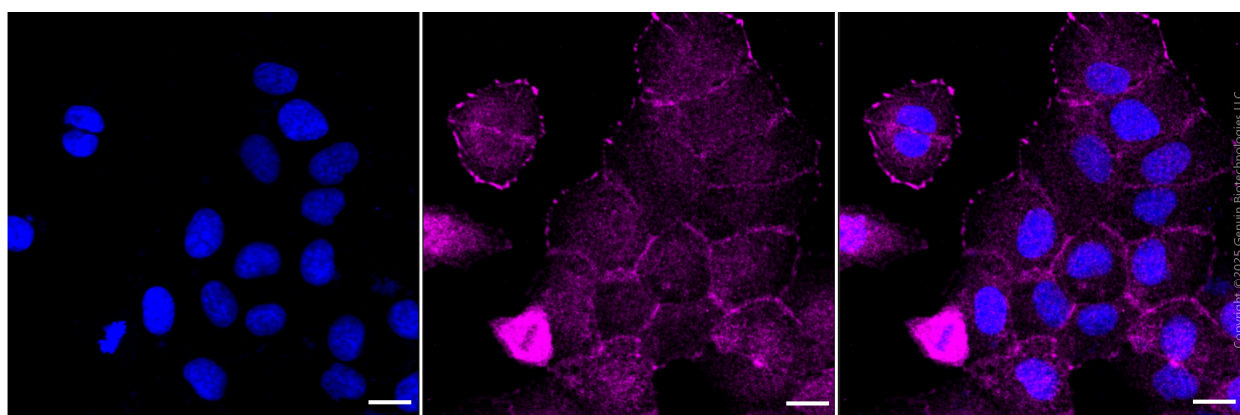
WWW.GENUINBIOTECH.COM

Validation Data



Copyright ©2024 Genuin Biotechnologies LLC

Flow cytometric analysis of FHL2 expression in HT-1080 cells using FHL2 antibody (Cat#2072, 1:2,000). Green, isotype control; red, FHL2.



Copyright ©2025 Genuin Biotechnologies LLC

Immunocytochemical staining of HT-1080 cells with anti-FHL2 antibody (Cat #2072, 1:1,000). Nuclei were stained blue with DAPI; FHL2 was stained magenta with Alexa Fluor® 647. Images were taken using Leica stellaris 5. Protein abundance based on laser Intensity and smart gain: Medium. Scale bar, 20 μm.

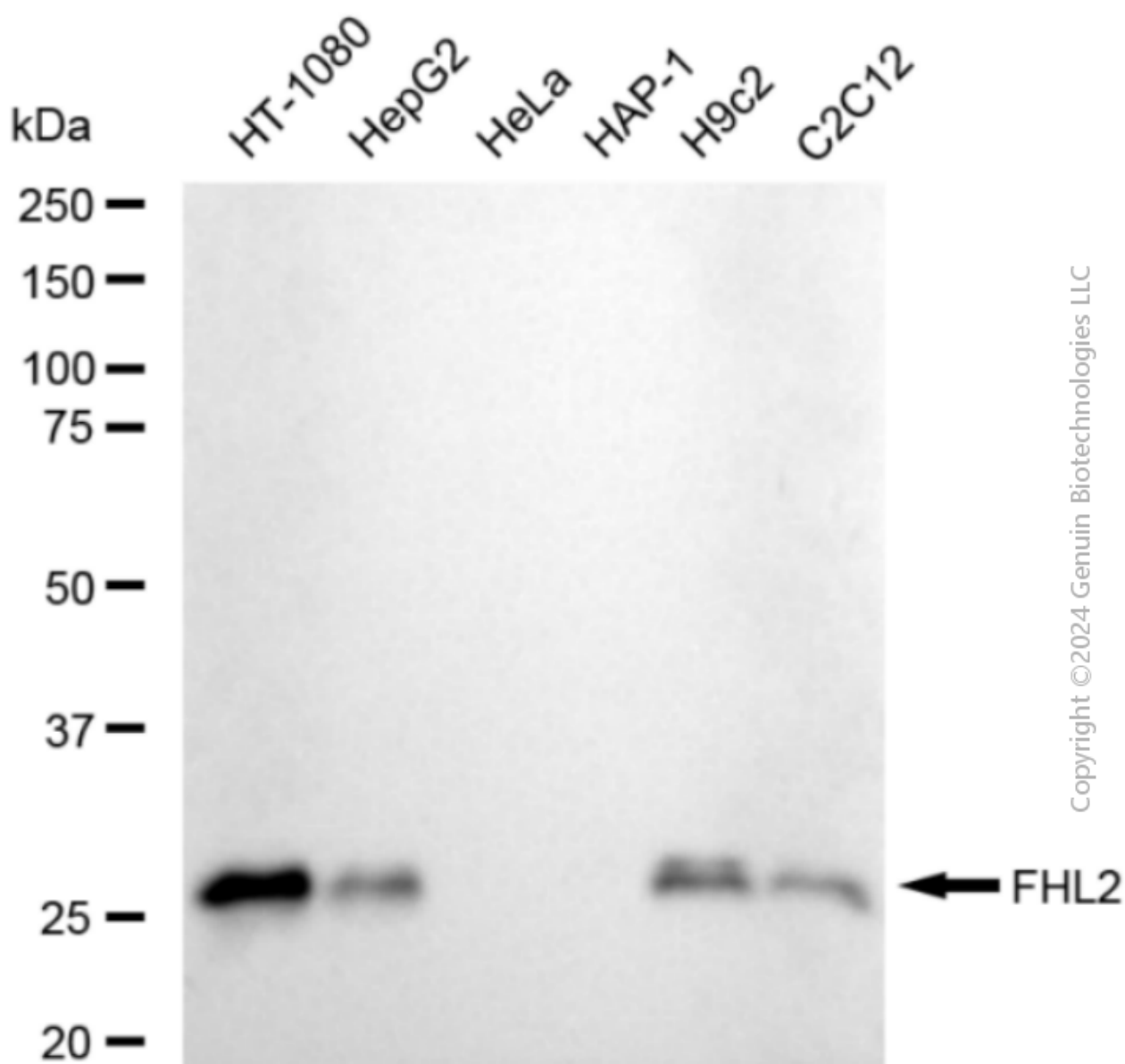
SUPPORT

SUPPORT@GENUINBIOTECH.COM
TEL: +1-540-855-7041

ORDERS

SALES@GENUINBIOTECH.COM
FAX: +1-540-855-7041

WWW.GENUINBIOTECH.COM



Western blotting analysis using anti-FHL2 antibody (Cat#2072). Total cell lysates (30 μ g) from various cell lines were loaded and separated by SDS-PAGE. The blot was incubated with anti-FHL2 antibody (Cat#2072, 1:5,000) and HRP-conjugated goat anti-rabbit secondary antibody (Cat#201, 1:20,000) respectively. Image was developed using FeQ™ ECL Substrate Kit (Cat#226).