

Anti-Early growth response 2 Recombinant Rabbit Monoclonal Antibody



Catalog #: 2073

Aliases

EGR2; Early Growth Response 2; KROX20; E3 SUMO-Protein Transferase ERG2; Early Growth Response Protein; E3 SUMO-Protein Ligase EGR2; Zinc Finger Protein Krox-20; AT591; KROX-20, Drosophila, Homolog (Early Growth Response-2); Early Growth Response 2 (Krox-20 Homolog, Drosophila); Krox-20 Homolog, Drosophila; EC 2.3.2.-; CMT1D; CMT4E; EGR-2

Background

Gene Name: EGR2

NCBI Gene Entry: [1959](#)

UniProt Entry: [P11161](#)

Application Information

Molecular Weight: Predicted, 50 kDa; observed, 53 kDa

Clonality: Rabbit monoclonal antibody

Clone ID: 23GB5865

Species Reactivity: Human, mouse, rat

Applications Tested: Western blotting (WB), flow cytometry (FCM), immunocytochemistry (IC)

Immunogen

A synthesized peptide derived from human EGR2

Isotype

Rabbit IgG

Storage Buffer

Supplied in PBS (pH 7.4) containing 50% glycerol, and 0.02% sodium azide.

Storage

Store at -20 °C for one year.

Recommended Dilutions

Western Blotting (WB): 1:1,000-1:5,000

Flow Cytometry (FCM): 1:2,000

Immunocytochemistry (IC): 1:100-1:1,000

SUPPORT

SUPPORT@GENUINBIOTECH.COM
TEL: +1-540-855-7041

ORDERS

SALES@GENUINBIOTECH.COM
FAX: +1-540-855-7041

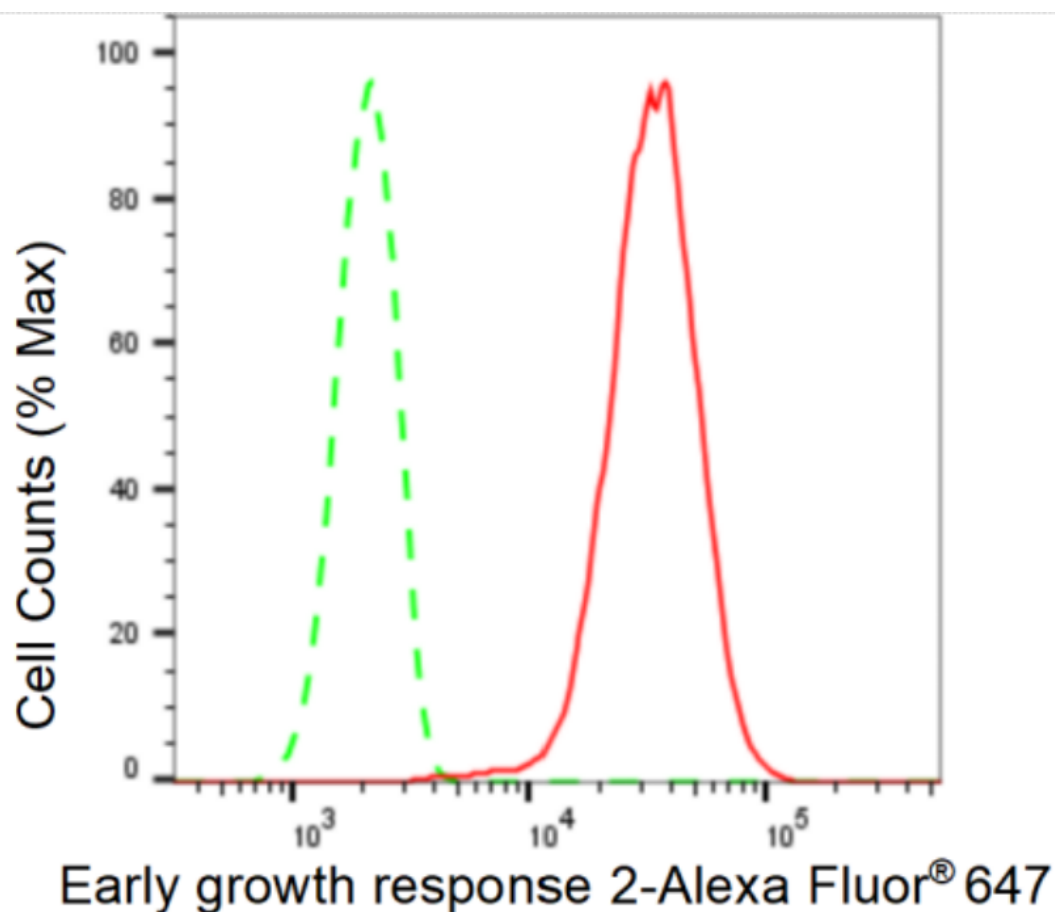
WWW.GENUINBIOTECH.COM

Anti-Early growth response 2 Recombinant Rabbit Monoclonal Antibody

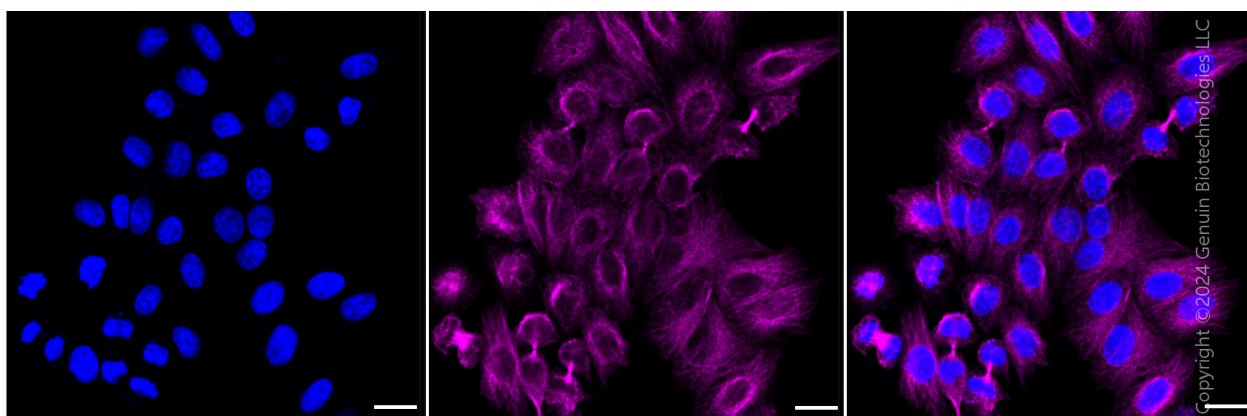
PAGE 2

Note: This product is for research use only.

Validation Data



Flow cytometric analysis of Early growth response 2 expression in HepG2 cells using Early growth response 2 antibody (Cat#2073, 1:2,000). Green, isotype control; red, Early growth response 2.



Immunocytochemical staining of HepG2 cells with anti-Early growth response 2 antibody (Cat#2073, 1:1,000). Nuclei were stained blue with DAPI; Early growth response 2 was stained

SUPPORT

SUPPORT@GENUINBIOTECH.COM
TEL: +1-540-855-7041

ORDERS

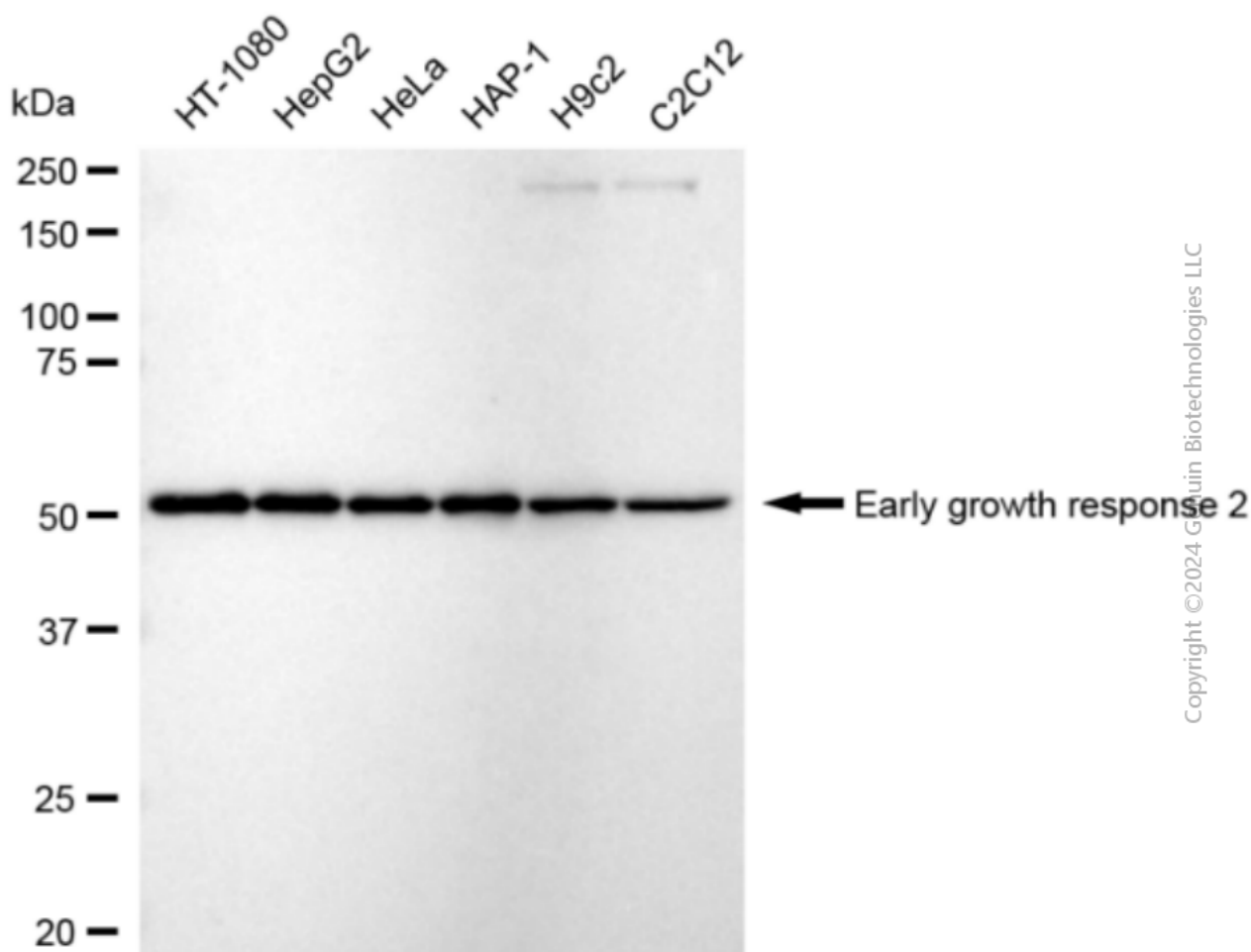
SALES@GENUINBIOTECH.COM
FAX: +1-540-855-7041

WWW.GENUINBIOTECH.COM

Anti-Early growth response 2 Recombinant Rabbit Monoclonal Antibody

PAGE 3

magenta with Alexa Fluor® 647. Images were taken using Leica stellaris 5. Protein abundance based on laser Intensity and smart gain: High. Scale bar: 20 µm.



Copyright ©2024 Genuin Biotechnologies LLC

Western blotting analysis using anti-Early growth response 2 antibody (Cat#2073). Total cell lysates (30 µg) from various cell lines were loaded and separated by SDS-PAGE. The blot was incubated with anti-Early growth response 2 antibody (Cat#2073, 1:5,000) and HRP-conjugated goat anti-rabbit secondary antibody (Cat#201, 1:20,000) respectively. Image was developed using FeQ™ ECL Substrate Kit (Cat#226).

SUPPORT

SUPPORT@GENUINBIOTECH.COM
TEL: +1-540-855-7041

ORDERS

SALES@GENUINBIOTECH.COM
FAX: +1-540-855-7041

WWW.GENUINBIOTECH.COM