

# Anti-Cytochrome P450 2C9 Recombinant Rabbit Monoclonal Antibody



**Catalog #: 2077**

## Aliases

CYP2C9; Cytochrome P450 Family 2 Subfamily C Member 9; P450IIC9; CYP2C10; Cytochrome P450, Family 2, Subfamily C, Polypeptide 9; Cytochrome P450 PB-1; Cytochrome P450 2C9; Cytochrome P-450MP; EC 1.14.14.1; CYP1IC9; Cytochrome P450, Subfamily IIC (Mephenytoin 4-Hydroxylase), Polypeptide 9; Cytochrome P-450 S-Mephenytoin 4-Hydroxylase; Flavoprotein-Linked Monooxygenase; (R)-Limonene 6-Monooxygenase; (S)-Limonene 6-Monooxygenase; (S)-Limonene 7-Monooxygenase; S-Mephenytoin 4-Hydroxylase; Cholesterol 25-Hydroxylase; Microsomal Monooxygenase; Xenobiotic Monooxygenase; Cytochrome P450 MP-4; Cytochrome P450 MP-8; EC 1.14.14.53; EC 1.14.14.51; EC 1.14.14.52; P450-2C9; CYP2C; CPC9

## Background

Gene Name: CYP2C9

NCBI Gene Entry: [1559](#)

UniProt Entry: [P11712](#)

## Application Information

Molecular Weight: Predicted, 56 kDa; observed, 50 kDa

Clonality: Rabbit monoclonal antibody

Clone ID: 23GB5885

Species Reactivity: Human

Applications Tested: Western blotting (WB), flow cytometry (FCM), immunocytochemistry (IC)

## Immunogen

A synthesized peptide derived from human Cytochrome P450 2C9

## Isotype

Rabbit IgG

## Storage Buffer

Supplied in PBS (pH 7.4) containing 50% glycerol, and 0.02% sodium azide.

## Storage

Store at -20 °C for one year.

## Recommended Dilutions

Western Blotting (WB): 1:1,000-1:5,000

---

### SUPPORT

SUPPORT@GENUINBIOTECH.COM  
TEL: +1-540-855-7041

### ORDERS

SALES@GENUINBIOTECH.COM  
FAX: +1-540-855-7041

[WWW.GENUINBIOTECH.COM](http://WWW.GENUINBIOTECH.COM)

# Anti-Cytochrome P450 2C9 Recombinant Rabbit Monoclonal Antibody

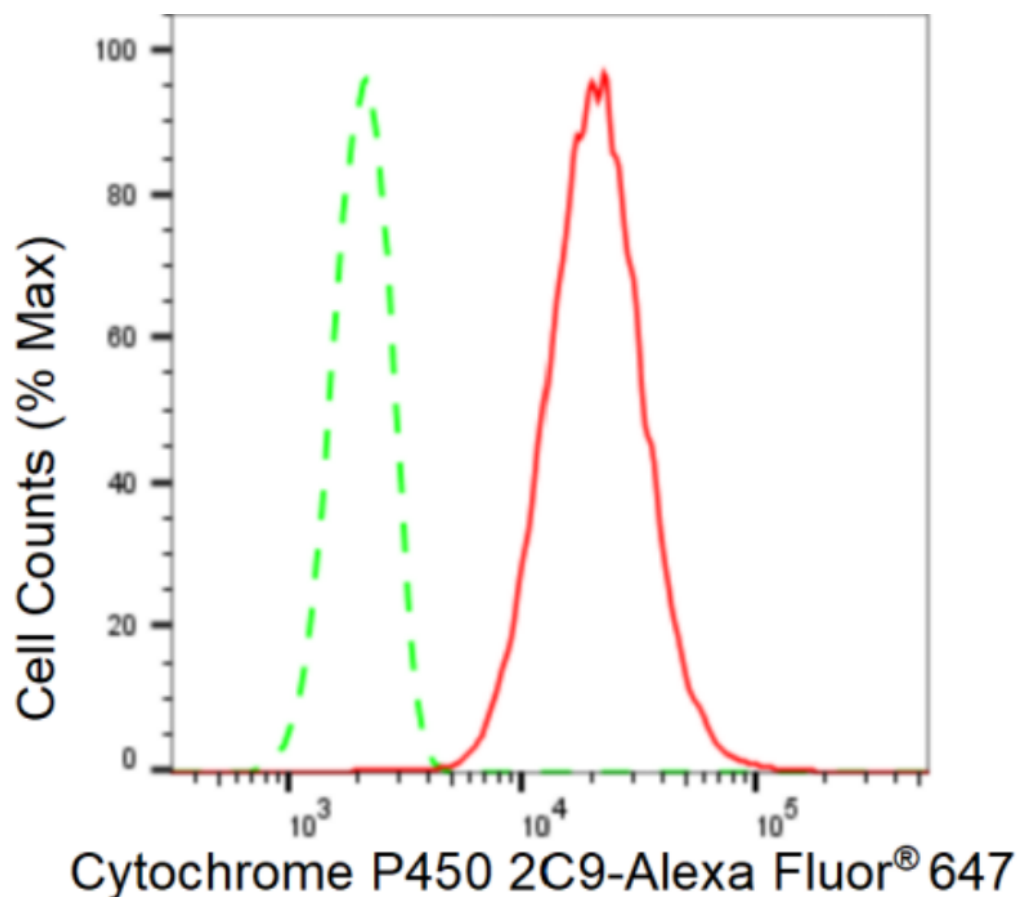
PAGE 2

Flow Cytometry (FCM): 1:2,000

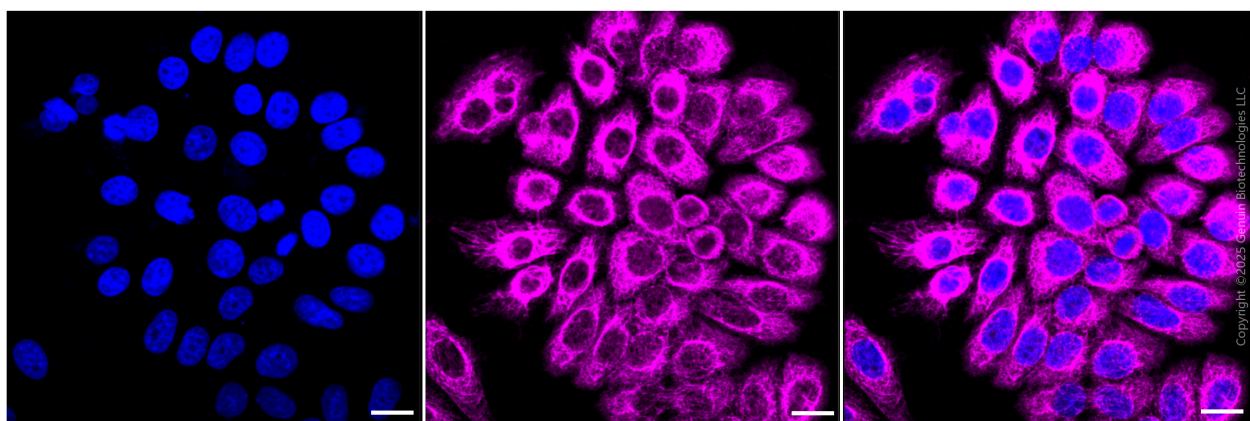
Immunocytochemistry (IC): 1:100-1:1,000

**Note:** This product is for research use only.

## Validation Data



Flow cytometric analysis of Cytochrome P450 2C9 expression in HepG2 cells using Cytochrome P450 2C9 antibody (Cat#2077, 1:2,000). Green, isotype control; red, Cytochrome P450 2C9.



### SUPPORT

SUPPORT@GENUINBIOTECH.COM  
TEL: +1-540-855-7041

### ORDERS

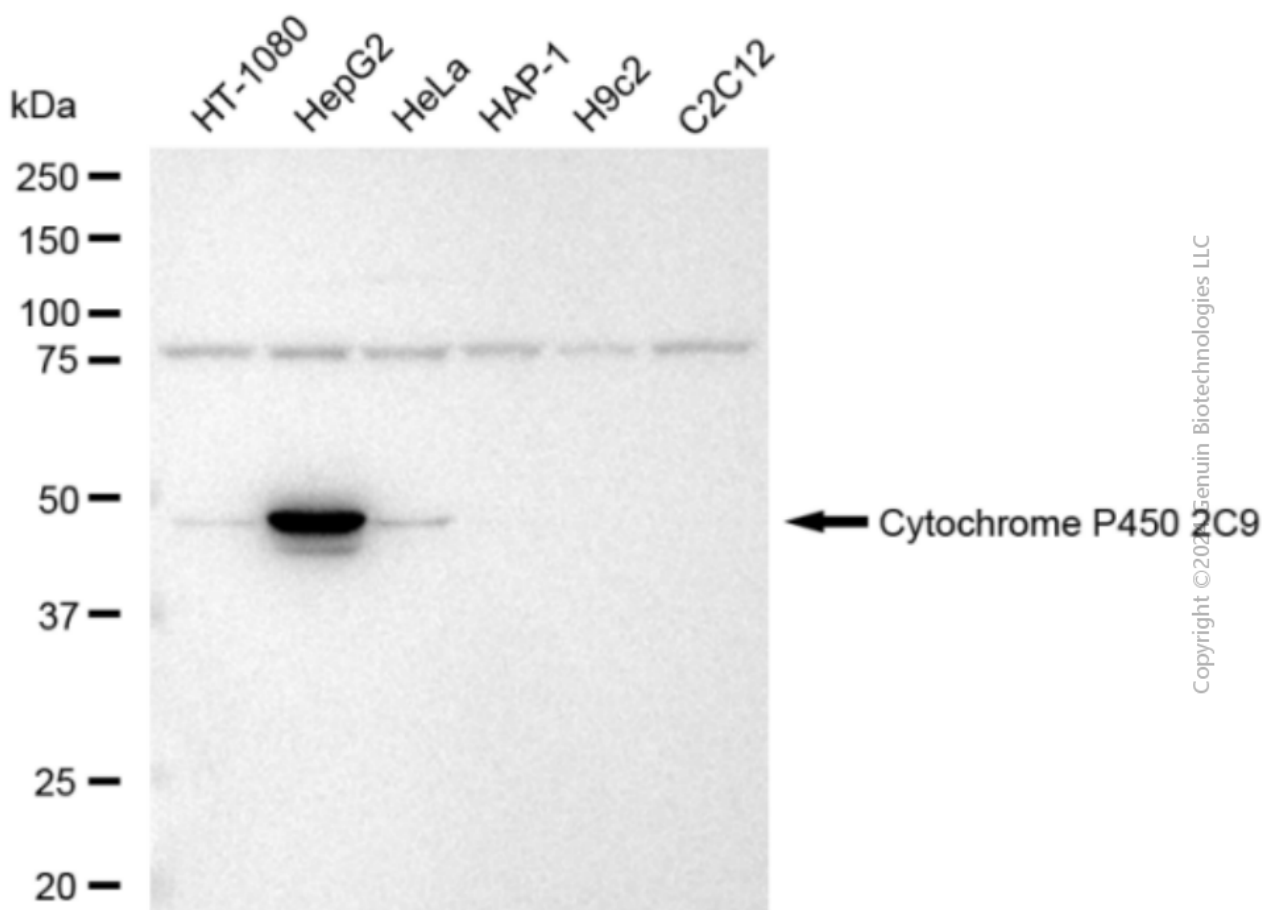
SALES@GENUINBIOTECH.COM  
FAX: +1-540-855-7041

WWW.GENUINBIOTECH.COM

## Anti-Cytochrome P450 2C9 Recombinant Rabbit Monoclonal Antibody

PAGE 3

Immunocytochemical staining of HepG2 cells with anti-Cytochrome P450 2C9 antibody (Cat#2077, 1:1,000). Nuclei were stained blue with DAPI; Cytochrome P450 2C9 was stained magenta with Alexa Fluor® 647. Images were taken using Leica stellaris 5. Protein abundance based on laser Intensity and smart gain: Medium. Scale bar, 20 µm.



Western blotting analysis using anti-Cytochrome P450 2C9 antibody (Cat#2077). Total cell lysates (30 µg) from various cell lines were loaded and separated by SDS-PAGE. The blot was incubated with anti-Cytochrome P450 2C9 antibody (Cat#2077, 1:5,000) and HRP-conjugated goat anti-rabbit secondary antibody (Cat#201, 1:20,000) respectively. Image was developed using FeQ™ ECL Substrate Kit (Cat#226).

### SUPPORT

SUPPORT@GENUINBIOTECH.COM  
TEL: +1-540-855-7041

### ORDERS

SALES@GENUINBIOTECH.COM  
FAX: +1-540-855-7041

WWW.GENUINBIOTECH.COM