

# Anti-FKBP8 Recombinant Rabbit Monoclonal Antibody



**Catalog #: 2078**

## Aliases

FKBP8; FKBP Prolyl Isomerase 8; FKBP38; Peptidyl-Prolyl Cis-Trans Isomerase FKBP8; FK506 Binding Protein 8, 38kDa; 38 KDa FK506-Binding Protein; FK506-Binding Protein 8; PPIase FKBP8; 38 KDa FKBP; Rotamase; FKBPPr38; FKBP-38; HFKBP38; FKBPR38; FKBP-8; FK506-Binding Protein 8 (38kD); FK506 Binding Protein 8; EC 5.2.1.8

## Background

Gene Name: FKBP8

NCBI Gene Entry: [23770](#)

UniProt Entry: [Q14318](#)

## Application Information

Molecular Weight: Predicted, 45 kDa; observed, 52 kDa

Clonality: Rabbit monoclonal antibody

Clone ID: 23GB5890

Species Reactivity: Human

Applications Tested: Western blotting (WB), flow cytometry (FCM), immunocytochemistry (IC)

## Immunogen

A synthesized peptide derived from human FKBP38

## Isotype

Rabbit IgG

## Storage Buffer

Supplied in PBS (pH 7.4) containing 50% glycerol, and 0.02% sodium azide.

## Storage

Store at -20 °C for one year.

## Recommended Dilutions

Western Blotting (WB): 1:1,000-1:5,000

Flow Cytometry (FCM): 1:2,000

Immunocytochemistry (IC): 1:100-1:1,000

---

### SUPPORT

SUPPORT@GENUINBIOTECH.COM  
TEL: +1-540-855-7041

### ORDERS

SALES@GENUINBIOTECH.COM  
FAX: +1-540-855-7041

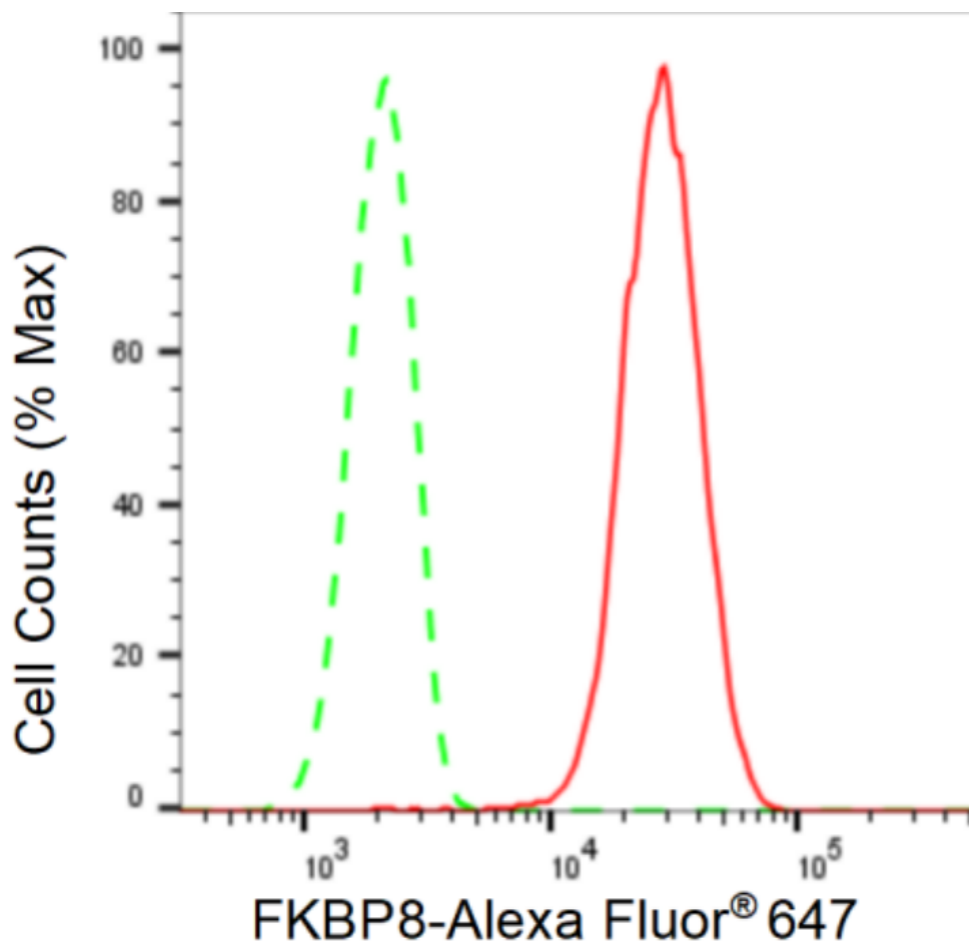
[WWW.GENUINBIOTECH.COM](http://WWW.GENUINBIOTECH.COM)

# Anti-FKBP8 Recombinant Rabbit Monoclonal Antibody

PAGE 2

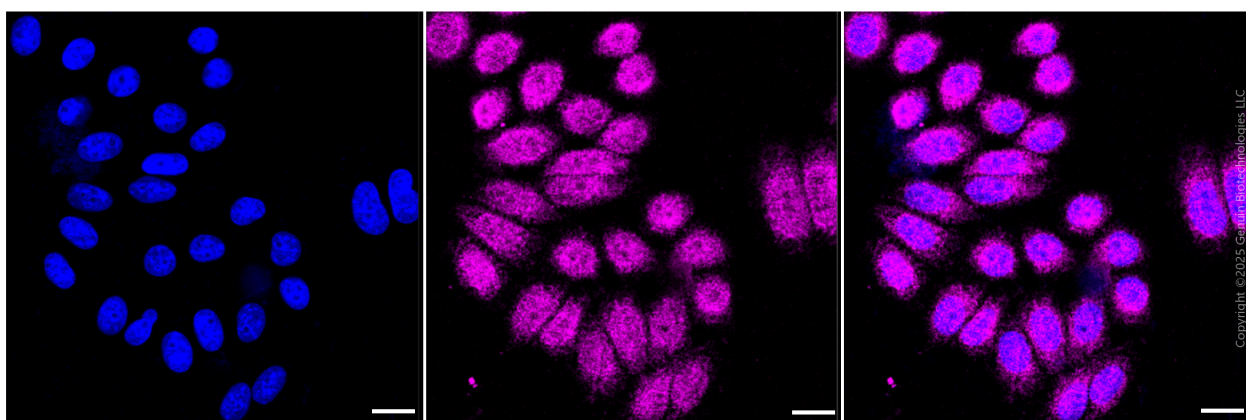
**Note:** This product is for research use only.

## Validation Data



Copyright ©2024 Genuin Biotechnologies LLC

Flow cytometric analysis of FKBP8 expression in HepG2 cells using FKBP8 antibody (Cat#2078, 1:2,000). Green, isotype control; red, FKBP8.



Copyright ©2025 Genuin Biotechnologies LLC

Immunocytochemical staining of HepG2 cells with anti-FKBP8 antibody (Cat#2078, 1:1,000). Nuclei were stained blue with DAPI; FKBP8 was stained magenta with Alexa Fluor® 647. Images

### SUPPORT

SUPPORT@GENUINBIOTECH.COM  
TEL: +1-540-855-7041

### ORDERS

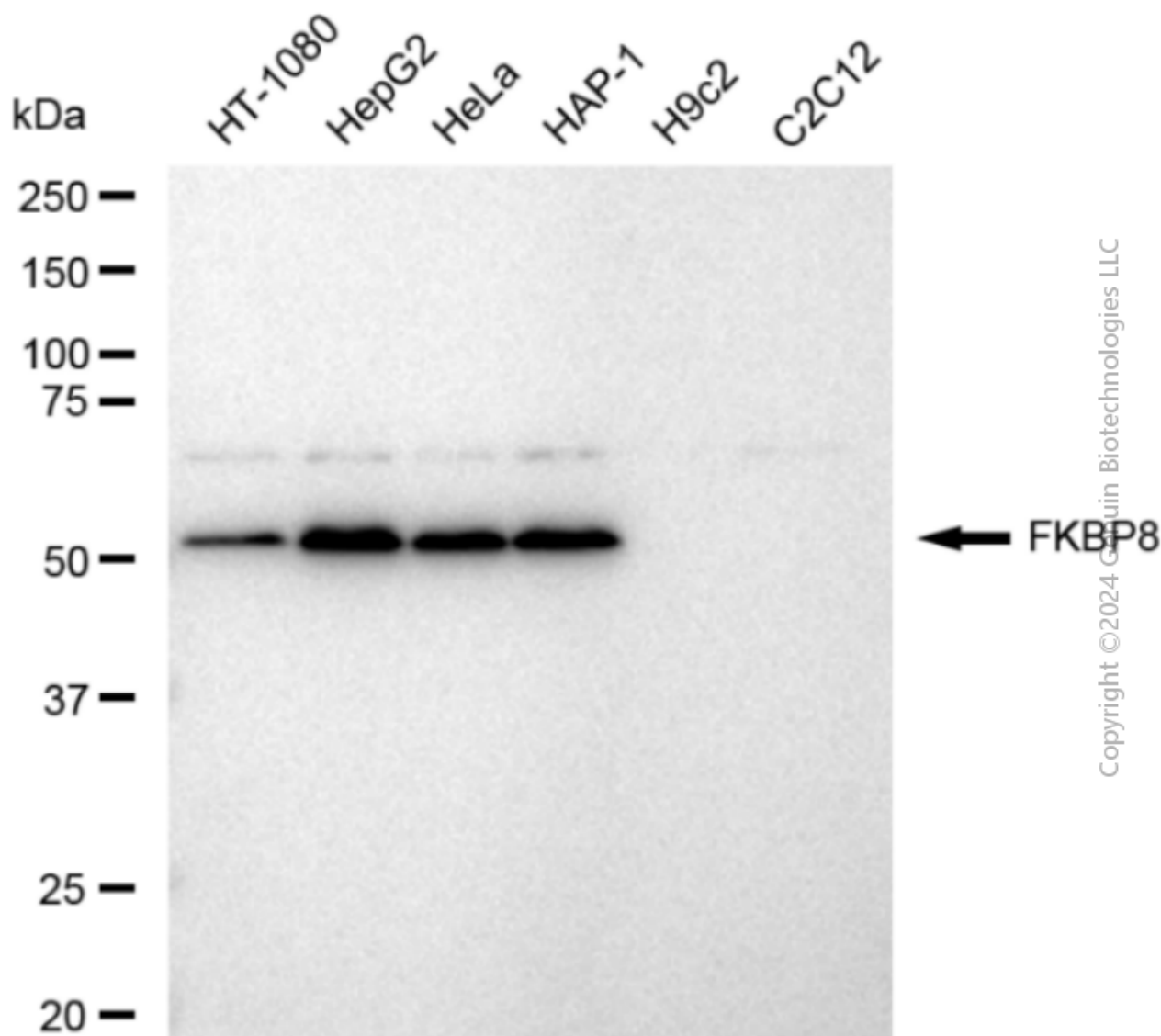
SALES@GENUINBIOTECH.COM  
FAX: +1-540-855-7041

[WWW.GENUINBIOTECH.COM](http://WWW.GENUINBIOTECH.COM)

## Anti-FKBP8 Recombinant Rabbit Monoclonal Antibody

PAGE 3

were taken using Leica stellaris 5. Protein abundance based on laser Intensity and smart gain: Medium. Scale bar, 20  $\mu$ m.



Western blotting analysis using anti-FKBP8 antibody (Cat#2078). Total cell lysates (30  $\mu$ g) from various cell lines were loaded and separated by SDS-PAGE. The blot was incubated with anti-FKBP8 antibody (Cat#2078, 1:5,000) and HRP-conjugated goat anti-rabbit secondary antibody (Cat#201, 1:20,000) respectively. Image was developed using FeQ<sup>TM</sup> ECL Substrate Kit (Cat#226).

### SUPPORT

SUPPORT@GENUINBIOTECH.COM  
TEL: +1-540-855-7041

### ORDERS

SALES@GENUINBIOTECH.COM  
FAX: +1-540-855-7041

[WWW.GENUINBIOTECH.COM](http://WWW.GENUINBIOTECH.COM)