

Anti-GJB1 Recombinant Rabbit Monoclonal Antibody



Catalog #: 2079

Aliases

GJB1; Gap Junction Protein Beta 1; CX32; Gap Junction Protein, Beta 1, 32kDa; GAP Junction 28 KDa Liver Protein; Gap Junction Beta-1 Protein; Connexin-32; CMTX1; CMTX; Gap Junction Protein, Beta 1, 32kDa (Connexin 32, Charcot-Marie-Tooth Neuropathy, X-Linked); Gap Junction Protein, Beta 1, 32kD (Connexin 32, Charcot-Marie-Tooth Neuropathy, X-Linked); Gap Junction Protein, Beta 1, 32kDa (Connexin 32); Charcot-Marie-Tooth Neuropathy, X-Linked; Connexin 32; Cx32

Background

Gene Name: GJB1

NCBI Gene Entry: [2705](#)

UniProt Entry: [P08034](#)

Application Information

Molecular Weight: Predicted, 32 kDa; observed, 26 kDa

Clonality: Rabbit monoclonal antibody

Clone ID: 23GB5895

Species Reactivity: Human

Applications Tested: Western blotting (WB), flow cytometry (FCM), immunocytochemistry (IC)

Immunogen

A synthesized peptide derived from human GJB1

Isotype

Rabbit IgG

Storage Buffer

Supplied in PBS (pH 7.4) containing 50% glycerol, and 0.02% sodium azide.

Storage

Store at -20 °C for one year.

Recommended Dilutions

Western Blotting (WB): 1:1,000-1:5,000

Flow Cytometry (FCM): 1:2,000

Immunocytochemistry (IC): 1:100-1:1,000

SUPPORT

SUPPORT@GENUINBIOTECH.COM
TEL: +1-540-855-7041

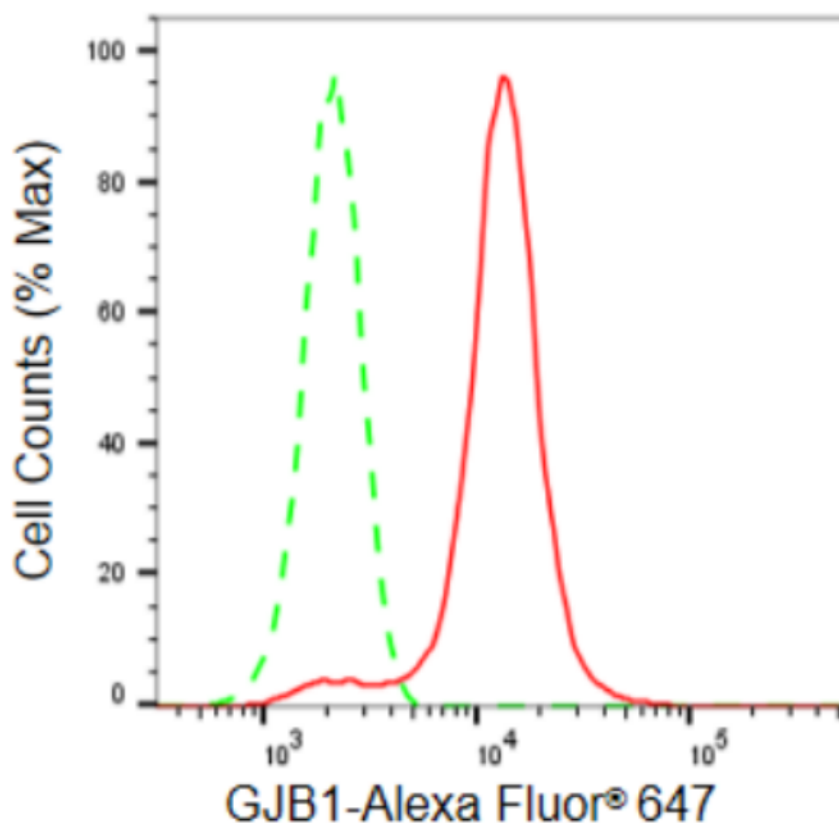
ORDERS

SALES@GENUINBIOTECH.COM
FAX: +1-540-855-7041

WWW.GENUINBIOTECH.COM

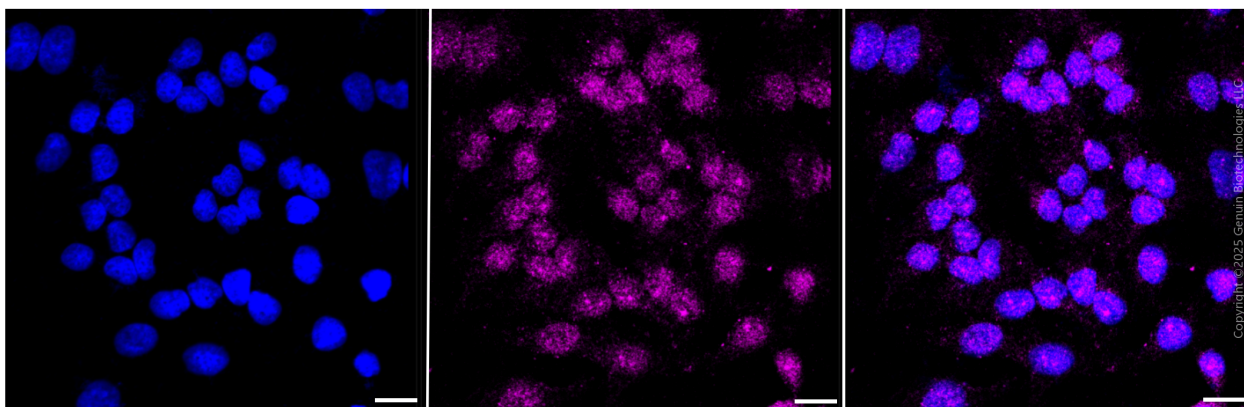
Note: This product is for research use only.

Validation Data



Copyright ©2024 Genuin Biotechnologies LLC

Flow cytometric analysis of GJB1 expression in HeLa cells using GJB1 antibody (Cat#2079, 1:2,000). Green, isotype control; red, GJB1.



Copyright ©2025 Genuin Biotechnologies LLC

SUPPORT

SUPPORT@GENUINBIOTECH.COM
TEL: +1-540-855-7041

ORDERS

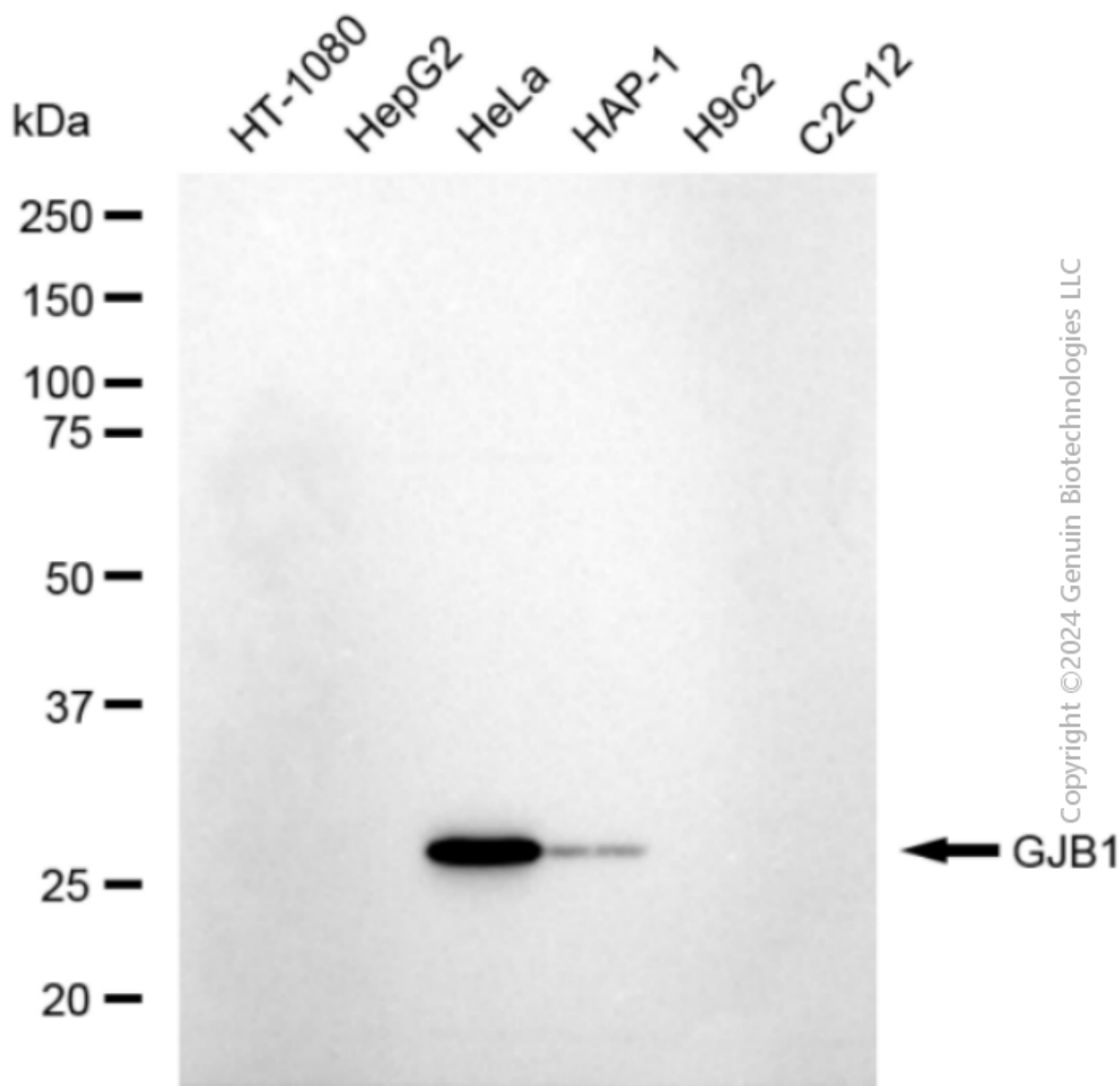
SALES@GENUINBIOTECH.COM
FAX: +1-540-855-7041

WWW.GENUINBIOTECH.COM

Anti-GJB1 Recombinant Rabbit Monoclonal Antibody

PAGE 3

Scale bar: 20 μ m.



Western blotting analysis using anti-GJB1 antibody (Cat#2079). Total cell lysates (30 μ g) from various cell lines were loaded and separated by SDS-PAGE. The blot was incubated with anti-GJB1 antibody (Cat#2079, 1:5,000) and HRP-conjugated goat anti-rabbit secondary antibody (Cat#201, 1:20,000) respectively. Image was developed using FeQ™ ECL Substrate Kit (Cat#226).

SUPPORT

SUPPORT@GENUINBIOTECH.COM
TEL: +1-540-855-7041

ORDERS

SALES@GENUINBIOTECH.COM
FAX: +1-540-855-7041

WWW.GENUINBIOTECH.COM