

Anti-ERCC8 Recombinant Rabbit Monoclonal Antibody



Catalog #: 2081

Aliases

ERCC8; ERCC Excision Repair 8, CSA Ubiquitin Ligase Complex Subunit; CSA; CKN1; Excision Repair Cross-Complementing Rodent Repair Deficiency, Complementation Group 8; Excision Repair Cross-Complementation Group 8; Cockayne Syndrome WD Repeat Protein CSA; DNA Excision Repair Protein ERCC-8; Cockayne Syndrome WD-Repeat Protein CSA; Cockayne Syndrome 1 (Classical); UVSS2

Background

Gene Name: ERCC8
NCBI Gene Entry: [1161](#)
UniProt Entry: [Q13216](#)

Application Information

Molecular Weight: Predicted, 44 kDa; observed, 44 kDa
Clonality: Rabbit monoclonal antibody
Clone ID: 23GB5905
Species Reactivity: Human
Applications Tested: Western blotting (WB), flow cytometry (FCM), immunocytochemistry (IC)

Immunogen

A synthesized peptide derived from human ERCC8

Isotype

Rabbit IgG

Storage Buffer

Supplied in PBS (pH 7.4) containing 50% glycerol, and 0.02% sodium azide.

Storage

Store at -20 °C for one year.

Recommended Dilutions

Western Blotting (WB): 1:1,000-1:5,000
Flow Cytometry (FCM): 1:2,000
Immunocytochemistry (IC): 1:100-1:1,000

SUPPORT

SUPPORT@GENUINBIOTECH.COM
TEL: +1-540-855-7041

ORDERS

SALES@GENUINBIOTECH.COM
FAX: +1-540-855-7041

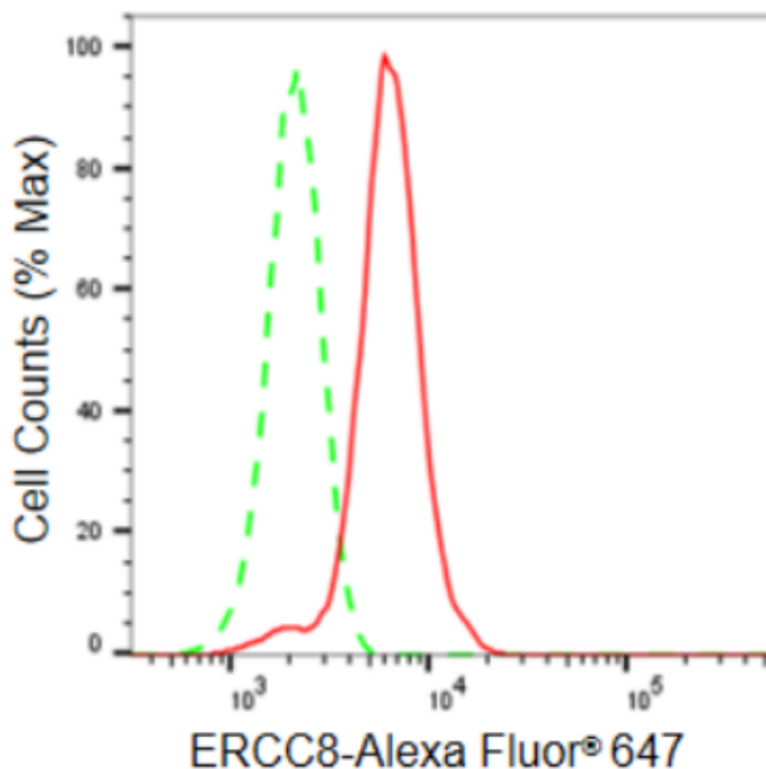
WWW.GENUINBIOTECH.COM

Anti-ERCC8 Recombinant Rabbit Monoclonal Antibody

PAGE 2

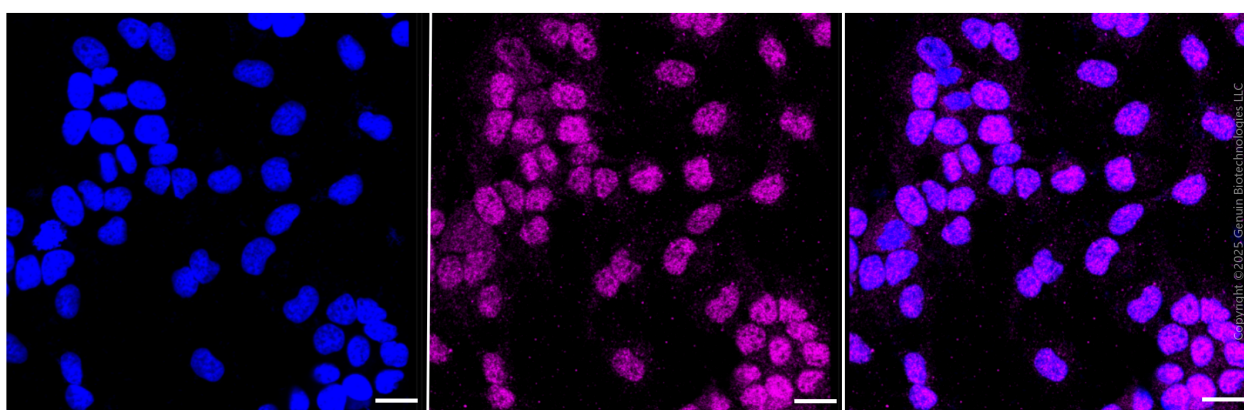
Note: This product is for research use only.

Validation Data



Copyright ©2024 Genuin Biotechnologies LLC

Flow cytometric analysis of ERCC8 expression in HeLa cells using ERCC8 antibody (Cat#2081, 1:2,000). Green, isotype control; red, ERCC8.



Copyright ©2025 Genuin Biotechnologies LLC

Immunocytochemical staining of HeLa cells with anti-ERCC8 antibody (Cat#2081, 1:1,000). Nuclei were stained blue with DAPI; ERCC8 was stained magenta with Alexa Fluor® 647. Images were taken using Leica stellaris 5. Protein abundance based on laser Intensity and smart gain: Low. Scale bar: 20 μ m.

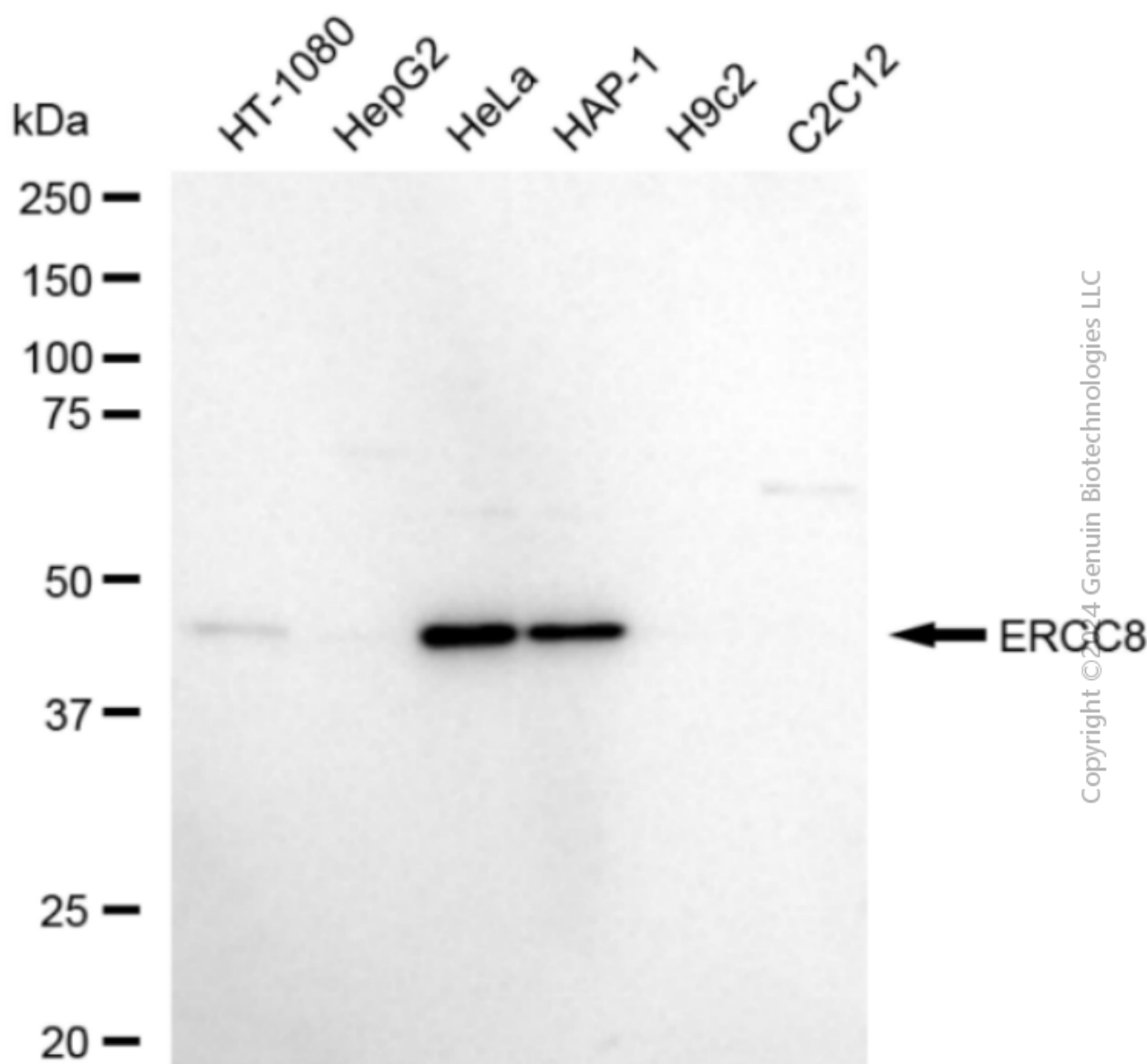
SUPPORT

SUPPORT@GENUINBIOTECH.COM
TEL: +1-540-855-7041

ORDERS

SALES@GENUINBIOTECH.COM
FAX: +1-540-855-7041

WWW.GENUINBIOTECH.COM



Western blotting analysis using anti-ERCC8 antibody (Cat#2081). Total cell lysates (30 µg) from various cell lines were loaded and separated by SDS-PAGE. The blot was incubated with anti-ERCC8 antibody (Cat#2081, 1:5,000) and HRP-conjugated goat anti-rabbit secondary antibody (Cat#201, 1:20,000) respectively. Image was developed using FeQ™ ECL Substrate Kit (Cat#226).