

Anti-Kinesin light chain 1 Recombinant Rabbit Monoclonal Antibody



Catalog #: 2085

Aliases

KLC1; Kinesin Light Chain 1; KLC; KNS2A; KNS2; Kinesin 2 60/70kDa; HKLC1S; HKLC1N; HKLC1P; HKLC1G; HKLC1R; HKLC1J; HKLC1B; Medulloblastoma Antigen MU-MB-2.50; Kinesin 2; KLC

Background

Gene Name: KLC1

NCBI Gene Entry: [3831](#)

UniProt Entry: [Q07866](#)

Application Information

Molecular Weight: Predicted, 65 kDa; observed, 65 kDa

Clonality: Rabbit monoclonal antibody

Clone ID: 23GB5925

Species Reactivity: Human, mouse, rat

Applications Tested: Western blotting (WB), flow cytometry (FCM)

Immunogen

A synthesized peptide derived from human KLC1

Isotype

Rabbit IgG

Storage Buffer

Supplied in PBS (pH 7.4) containing 50% glycerol, and 0.02% sodium azide.

Storage

Store at -20 °C for one year.

Recommended Dilutions

Western Blotting (WB): 1:1,000-1:5,000

Flow Cytometry (FCM): 1:2,000

Note: This product is for research use only.

Validation Data

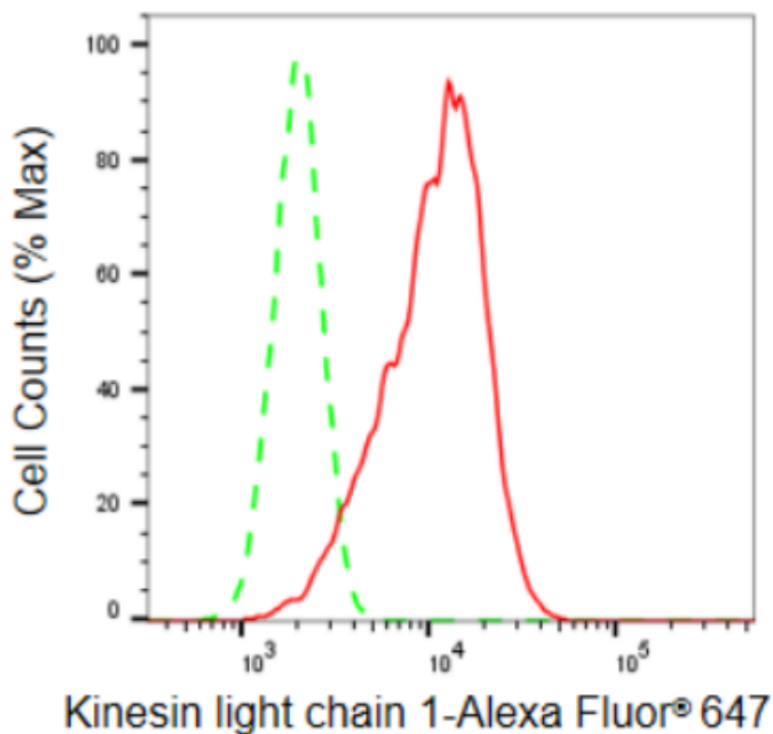
SUPPORT

SUPPORT@GENUINBIOTECH.COM
TEL: +1-540-855-7041

ORDERS

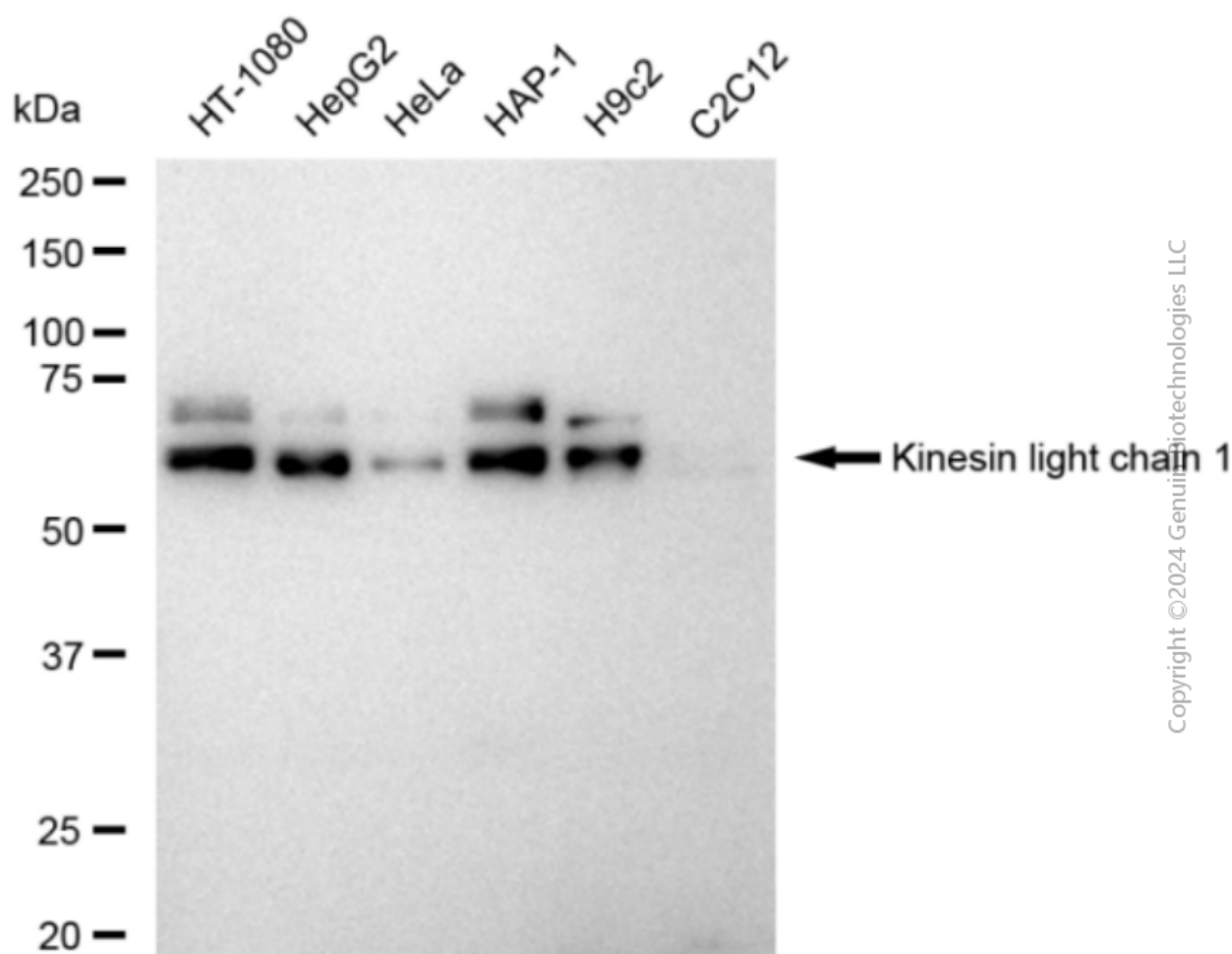
SALES@GENUINBIOTECH.COM
FAX: +1-540-855-7041

WWW.GENUINBIOTECH.COM



Copyright ©2024 Genuin Biotechnologies LLC

Flow cytometric analysis of Kinesin light chain 1 expression in HepG2 cells using Kinesin light chain 1 antibody (Cat#2085, 1:2,000). Green, isotype control; red, Kinesin light chain 1.



Western blotting analysis using anti-Kinesin light chain 1 antibody (Cat#2085). Total cell lysates (30 µg) from various cell lines were loaded and separated by SDS-PAGE. The blot was incubated with anti-Kinesin light chain 1 antibody (Cat#2085, 1:5,000) and HRP-conjugated goat anti-rabbit secondary antibody (Cat#201, 1:20,000) respectively. Image was developed using FeQ™ ECL Substrate Kit (Cat#226).