

# Anti-LGI1 Recombinant Rabbit Monoclonal Antibody



**Catalog #: 2086**

## Aliases

LGI1; Leucine Rich Glioma Inactivated 1; Epitempin-1; EPITEMPIN; IB1099; ETL1; EPT; Leucine-Rich Glioma-Inactivated Protein 1; Epilepsy, Partial; ADPAEF; ADPEAF; ADLTE

## Background

Gene Name: LGI1

NCBI Gene Entry: [9211](#)

UniProt Entry: [O95970](#)

## Application Information

Molecular Weight: Predicted, 64 kDa; observed, 64 kDa

Clonality: Rabbit monoclonal antibody

Clone ID: 23GB5930

Species Reactivity: Human

Applications Tested: Western blotting (WB), flow cytometry (FCM)

## Immunogen

A synthesized peptide derived from human Lgi1

## Isotype

Rabbit IgG

## Storage Buffer

Supplied in PBS (pH 7.4) containing 50% glycerol, and 0.02% sodium azide.

## Storage

Store at -20 °C for one year.

## Recommended Dilutions

Western Blotting (WB): 1:1,000-1:5,000

Flow Cytometry (FCM): 1:2,000

**Note:** This product is for research use only.

## Validation Data

---

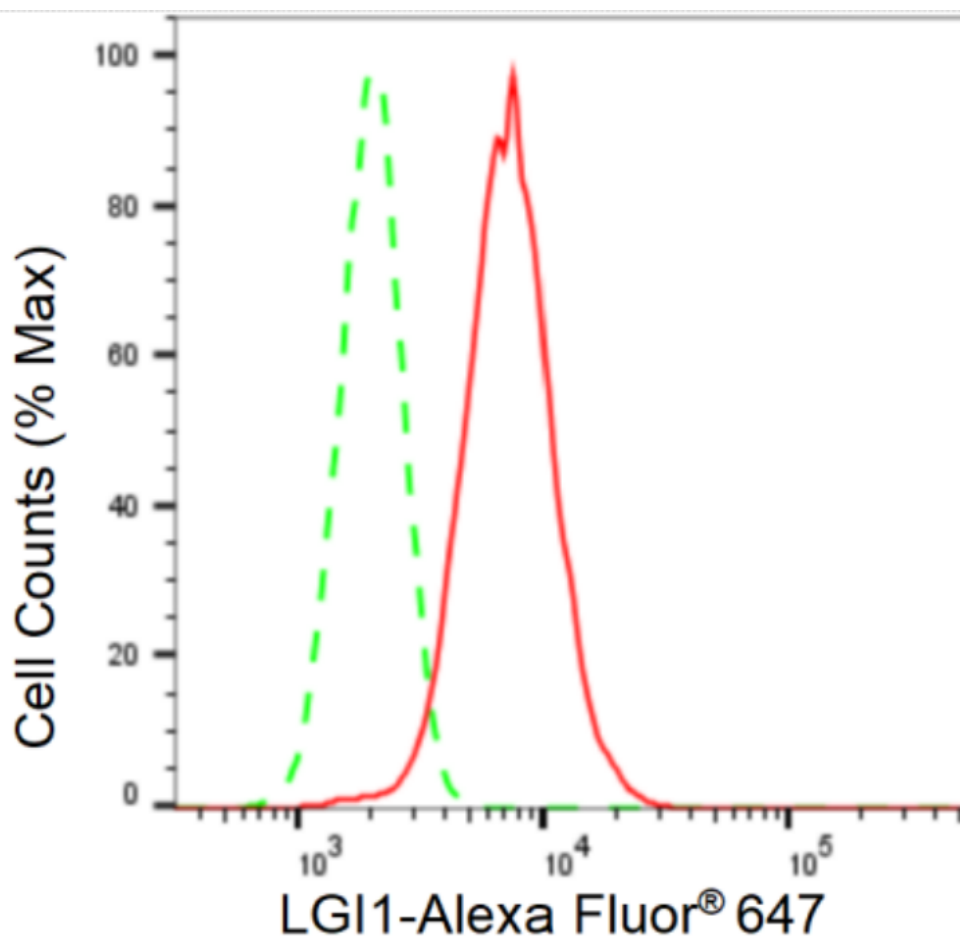
### SUPPORT

SUPPORT@GENUINBIOTECH.COM  
TEL: +1-540-855-7041

### ORDERS

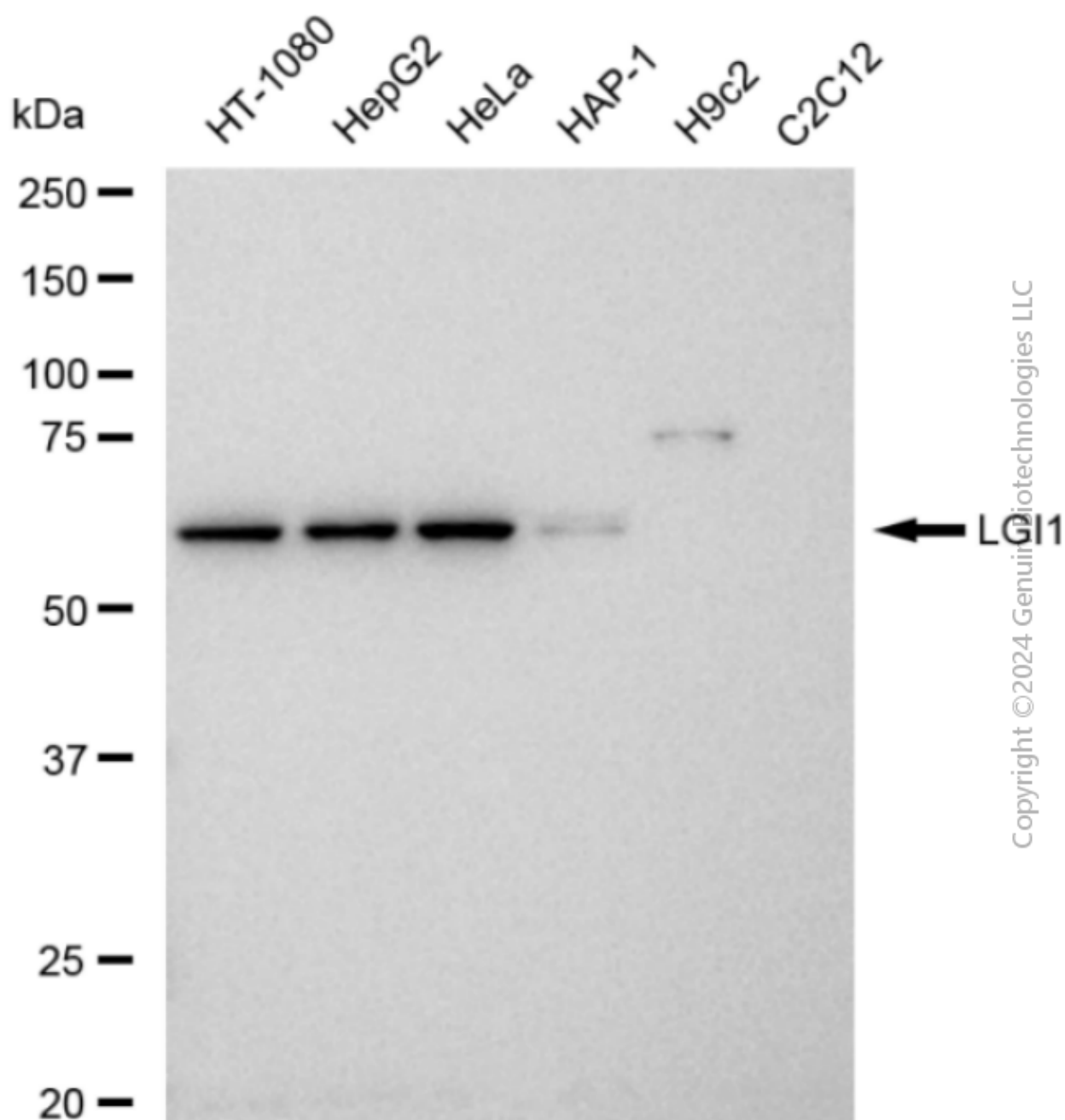
SALES@GENUINBIOTECH.COM  
FAX: +1-540-855-7041

[WWW.GENUINBIOTECH.COM](http://WWW.GENUINBIOTECH.COM)



Copyright ©2024 Genuin Biotechnologies LLC

Flow cytometric analysis of LGI1 expression in HepG2 cells using LGI1 antibody (Cat#2086, 1:2,000). Green, isotype control; red, LGI1.



Western blotting analysis using anti-LGI1 antibody (Cat#2086). Total cell lysates (30 µg) from various cell lines were loaded and separated by SDS-PAGE. The blot was incubated with anti-LGI1 antibody (Cat#2086, 1:5,000) and HRP-conjugated goat anti-rabbit secondary antibody (Cat#201, 1:20,000) respectively. Image was developed using FeQ™ ECL Substrate Kit (Cat#226).