

Anti-HTATSF1 Recombinant Rabbit Monoclonal Antibody



Catalog #: 2087

Aliases

HTATSF1; HIV-1 Tat Specific Factor 1; TAT-SF1; HIV TAT Specific Factor 1; HIV Tat-Specific Factor 1; Cofactor Required For Tat Activation Of HIV-1 Transcription; DJ196E23.; Tat-SF1; TATSF1

Background

Gene Name: HTATSF1

NCBI Gene Entry: [27336](#)

UniProt Entry: [O43719](#)

Application Information

Molecular Weight: Predicted, 86 kDa; observed, 140 kDa

Clonality: Rabbit monoclonal antibody

Clone ID: 23GB5935

Species Reactivity: Human, mouse, rat

Applications Tested: Western blotting (WB), flow cytometry (FCM), immunocytochemistry (IC)

Immunogen

A synthesized peptide derived from human HTSF1

Isotype

Rabbit IgG

Storage Buffer

Supplied in PBS (pH 7.4) containing 50% glycerol, and 0.02% sodium azide.

Storage

Store at -20 °C for one year.

Recommended Dilutions

Western Blotting (WB): 1:1,000-1:5,000

Flow Cytometry (FCM): 1:2,000

Immunocytochemistry (IC): 1:100-1:1,000

Note: This product is for research use only.

SUPPORT

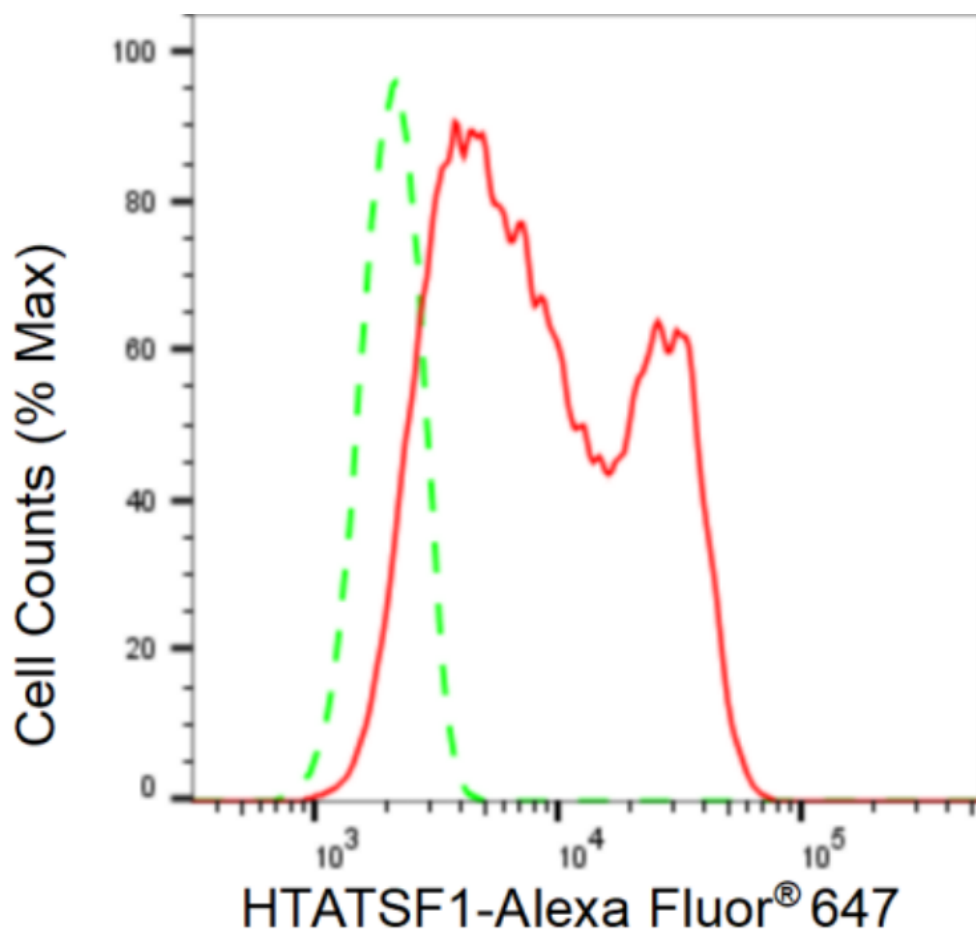
SUPPORT@GENUINBIOTECH.COM
TEL: +1-540-855-7041

ORDERS

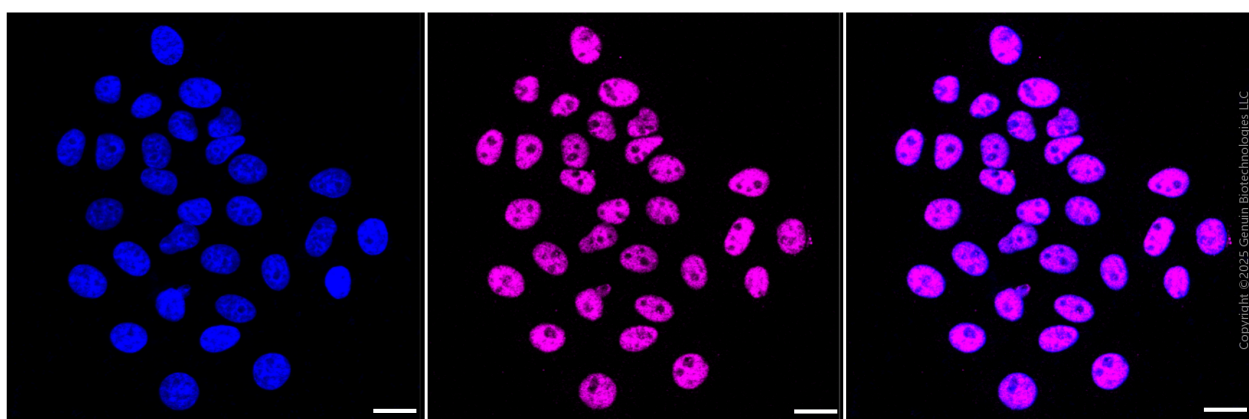
SALES@GENUINBIOTECH.COM
FAX: +1-540-855-7041

WWW.GENUINBIOTECH.COM

Validation Data



Flow cytometric analysis of HTATSF1 expression in HepG2 cells using HTATSF1 antibody (Cat#2087, 1:2,000). Green, isotype control; red, HTATSF1.



Immunocytochemical staining of HepG2 cells with anti-HTATSF1 antibody (Cat#2087, 1:1,000) . Nuclei were stained blue with DAPI; HTATSF1 was stained magenta with Alexa Fluor® 647. Images were taken using Leica stellaris 5. Protein abundance based on laser Intensity and smart gain: Medium. Scale bar, 20 μ m.

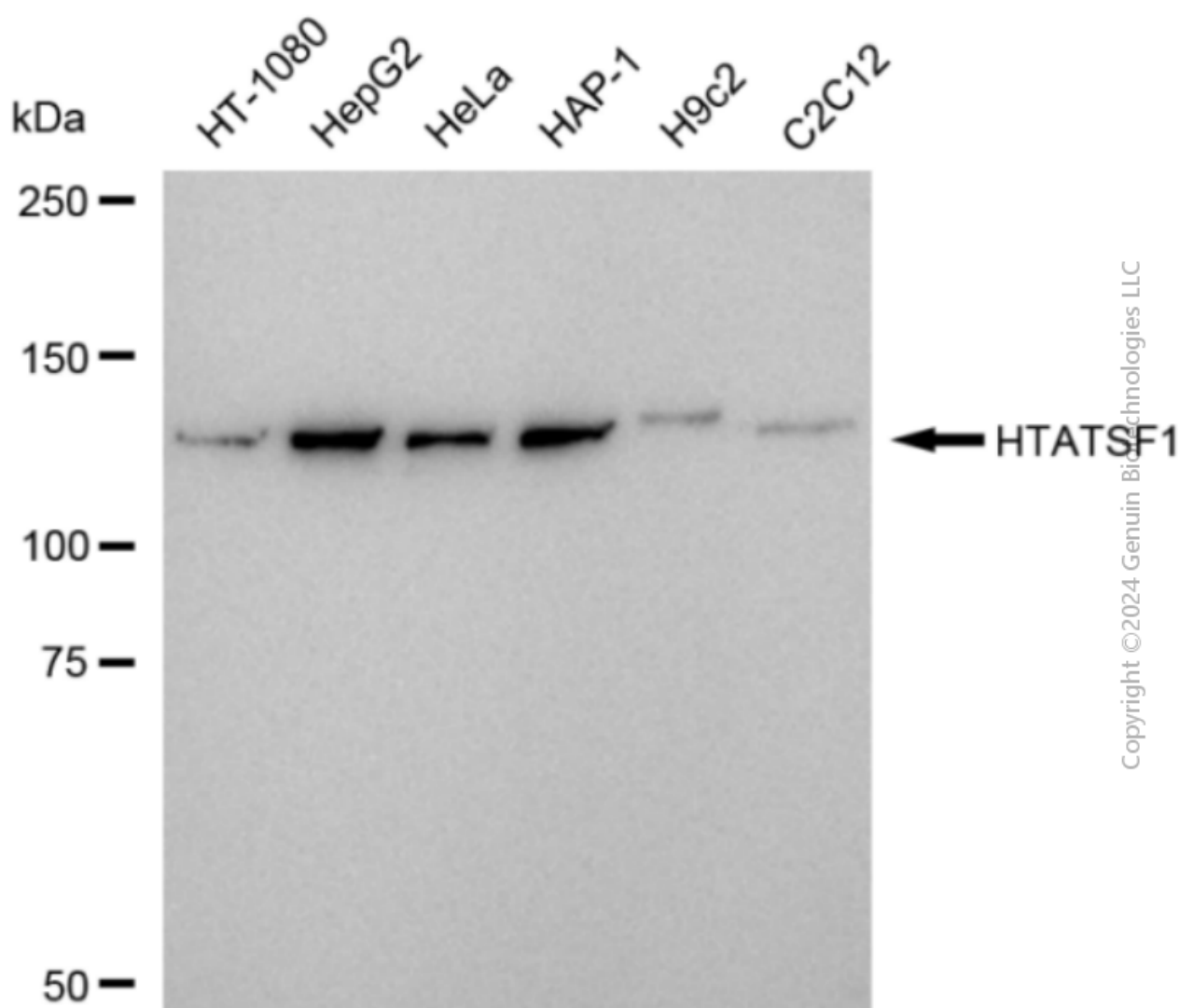
SUPPORT

SUPPORT@GENUINBIOTECH.COM
TEL: +1-540-855-7041

ORDERS

SALES@GENUINBIOTECH.COM
FAX: +1-540-855-7041

WWW.GENUINBIOTECH.COM



Copyright ©2024 Genuin Biotechnologies LLC

Western blotting analysis using anti-HTATSF1 antibody (Cat#2087). Total cell lysates (30 μ g) from various cell lines were loaded and separated by SDS-PAGE. The blot was incubated with anti-HTATSF1 antibody (Cat#2087, 1:5,000) and HRP-conjugated goat anti-rabbit secondary antibody (Cat#201, 1:20,000) respectively. Image was developed using FeQ™ ECL Substrate Kit (Cat#226).