

Anti-IGF2BP2 Recombinant Rabbit Monoclonal Antibody



Catalog #: 2091

Aliases

IGF2BP2; Insulin Like Growth Factor 2 mRNA Binding Protein 2; IMP-2; P62; Insulin-Like Growth Factor 2 mRNA-Binding Protein; IGF-II mRNA-Binding Protein 2; IGF2 mRNA-Binding Protein; VICKZ Family Member 2; VICKZ2; IMP2; Insulin-Like Growth Factor 2 mRNA Binding Protein 2; Hepatocellular Carcinoma Autoantigen P62; IGF II mRNA Binding Protein 2

Background

Gene Name: IGF2BP2

NCBI Gene Entry: [10644](#)

UniProt Entry: [Q9Y6M1](#)

Application Information

Molecular Weight: Predicted, 66 kDa; observed, 66 kDa

Clonality: Rabbit monoclonal antibody

Clone ID: 23GB5955

Species Reactivity: Human, mouse, rat

Applications Tested: Western blotting (WB), flow cytometry (FCM), immunocytochemistry (IC)

Immunogen

A synthesized peptide derived from human IGF2BP2

Isotype

Rabbit IgG

Storage Buffer

Supplied in PBS (pH 7.4) containing 50% glycerol, and 0.02% sodium azide.

Storage

Store at -20 °C for one year.

Recommended Dilutions

Western Blotting (WB): 1:1,000-1:5,000

Flow Cytometry (FCM): 1:2,000

Immunocytochemistry (IC): 1:100-1:1,000

SUPPORT

SUPPORT@GENUINBIOTECH.COM
TEL: +1-540-855-7041

ORDERS

SALES@GENUINBIOTECH.COM
FAX: +1-540-855-7041

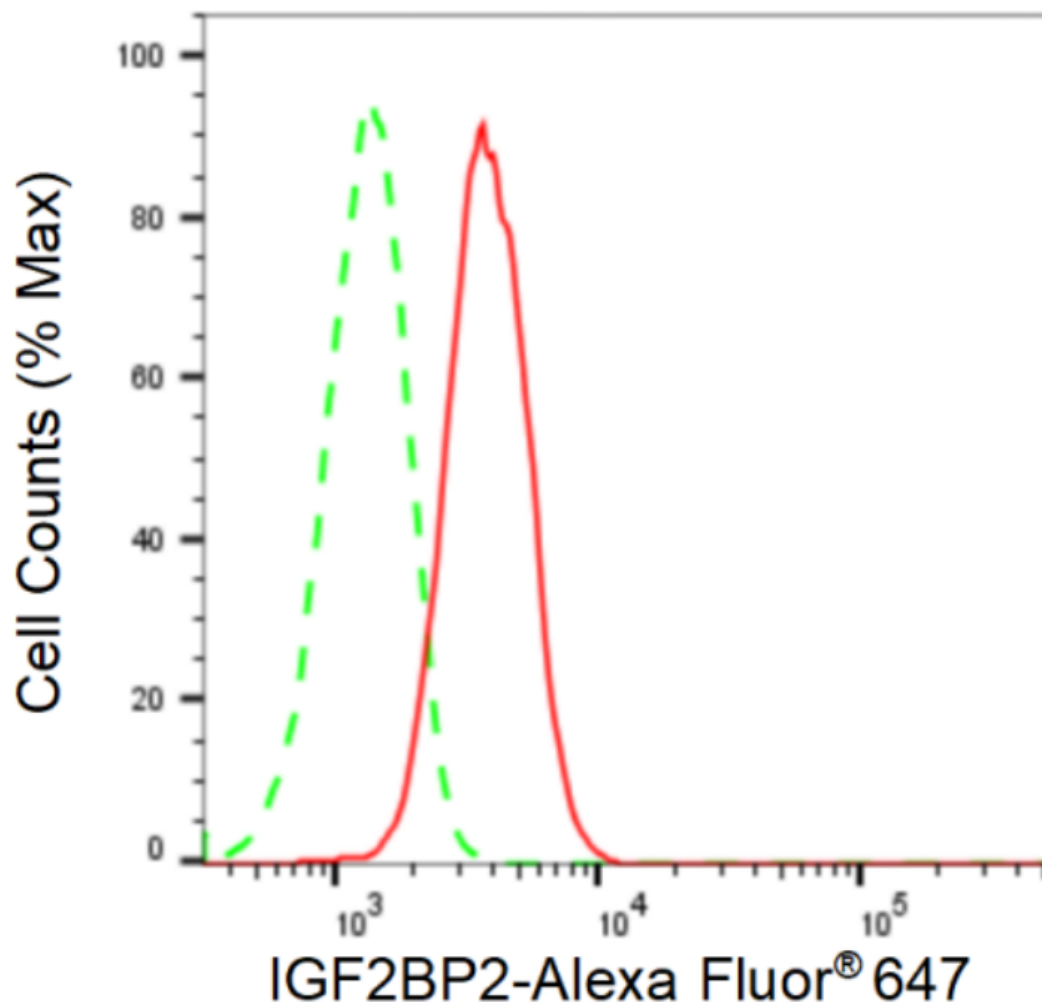
WWW.GENUINBIOTECH.COM

Anti-IGF2BP2 Recombinant Rabbit Monoclonal Antibody

PAGE 2

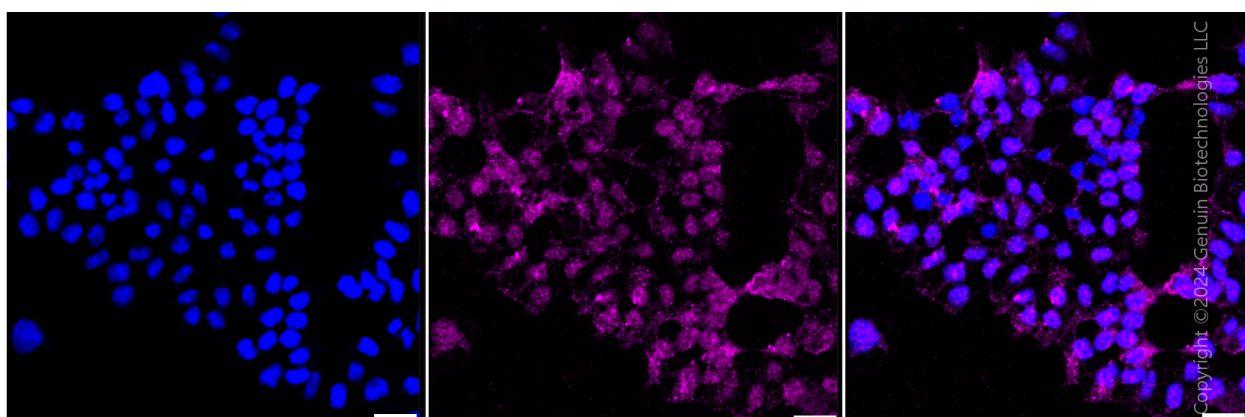
Note: This product is for research use only.

Validation Data



Copyright ©2024 Genuin Biotechnologies LLC

Flow cytometric analysis of IGF2BP2 expression in HAP-1 cells using anti-IGF2BP2 antibody (Cat#2091, 1:2,000). Green, isotype control; red, IGF2BP2.



Copyright ©2024 Genuin Biotechnologies LLC

SUPPORT

SUPPORT@GENUINBIOTECH.COM
TEL: +1-540-855-7041

ORDERS

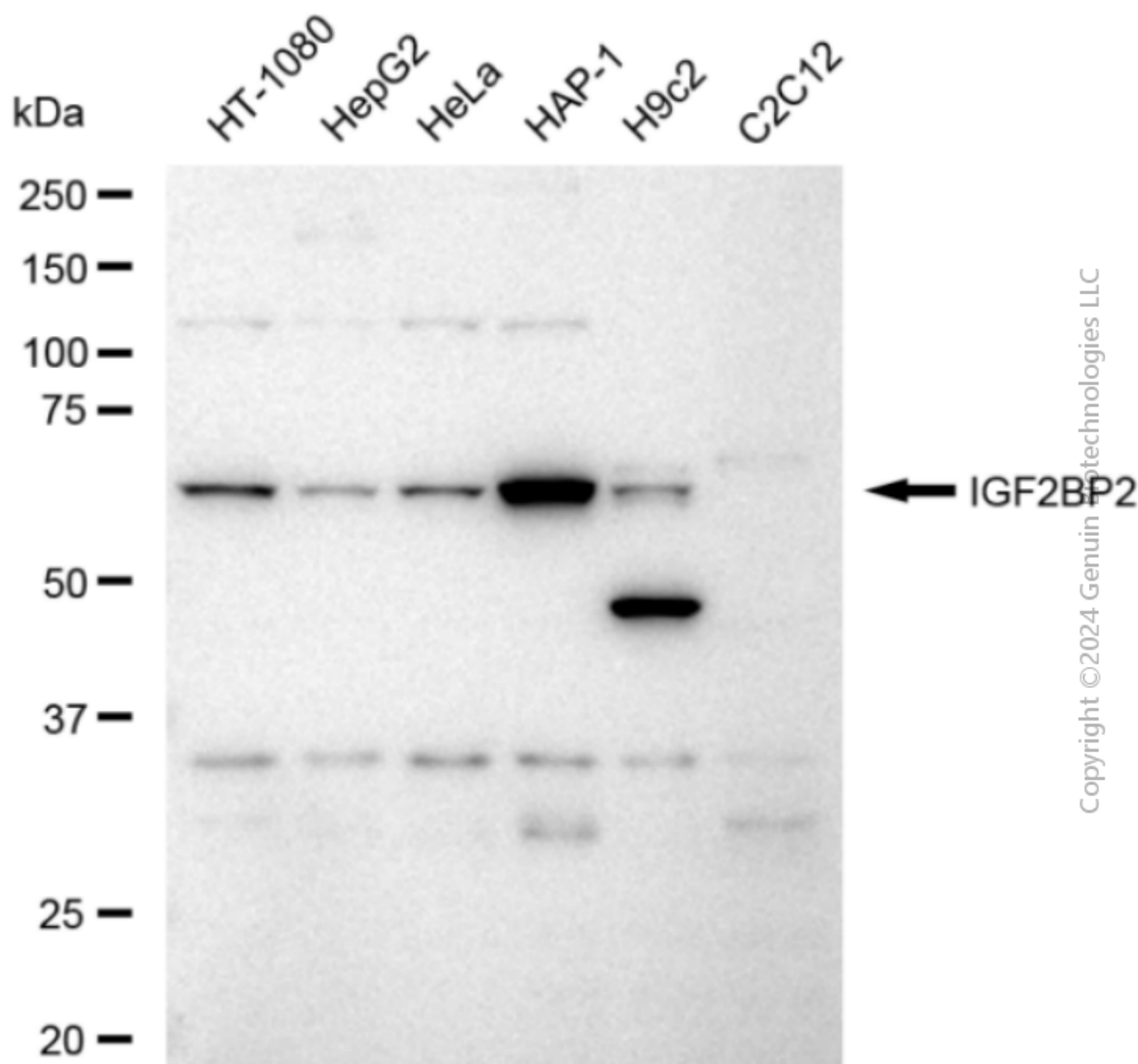
SALES@GENUINBIOTECH.COM
FAX: +1-540-855-7041

WWW.GENUINBIOTECH.COM

Anti-IGF2BP2 Recombinant Rabbit Monoclonal Antibody

PAGE 3

Immunocytochemical staining of HAP1 cells with anti-IGF2BP2 antibody (Cat#2091, 1:1,000). Nuclei were stained blue with DAPI; IGF2BP2 was stained magenta with Alexa Fluor® 647. Images were taken using Leica stellaris 5. Protein abundance based on laser Intensity and smart gain: Medium. Scale bar: 20 μ m.



Western blotting analysis using anti-IGF2BP2 antibody (Cat#2091). Total cell lysates (30 μ g) from various cell lines were loaded and separated by SDS-PAGE. The blot was incubated with anti-IGF2BP2 antibody (Cat#2091, 1:5,000) and HRP-conjugated goat anti-rabbit secondary antibody (Cat#201, 1:20,000) respectively. Image was developed using FeQ™ ECL Substrate Kit (Cat#226).

SUPPORT

SUPPORT@GENUINBIOTECH.COM
TEL: +1-540-855-7041

ORDERS

SALES@GENUINBIOTECH.COM
FAX: +1-540-855-7041

WWW.GENUINBIOTECH.COM