

# Anti-Homeostatic iron regulator Recombinant Rabbit Monoclonal Antibody



**Catalog #: 2092**

## Aliases

HFE; Homeostatic Iron Regulator; HLA-H; HFE1; Hereditary Hemochromatosis Protein; High Fe; Hereditary Hemochromatosis Protein HLA-H; MHC Class I-Like Protein HFE; Hemochromatosis; TFQTL2; MVCD7; HLAH; HH

## Background

Gene Name: HFE

NCBI Gene Entry: [3077](#)

UniProt Entry: [Q30201](#)

## Application Information

Molecular Weight: Predicted, 40 kDa; observed, 40 kDa

Clonality: Rabbit monoclonal antibody

Clone ID: 23GB5960

Species Reactivity: Human

Applications Tested: Western blotting (WB), flow cytometry (FCM), immunocytochemistry (IC)

## Immunogen

A synthesized peptide derived from human HFE

## Isotype

Rabbit IgG

## Storage Buffer

Supplied in PBS (pH 7.4) containing 50% glycerol, and 0.02% sodium azide.

## Storage

Store at -20 °C for one year.

## Recommended Dilutions

Western Blotting (WB): 1:1,000-1:5,000

Flow Cytometry (FCM): 1:2,000

Immunocytochemistry (IC): 1:100-1:1,000

**Note:** This product is for research use only.

---

### SUPPORT

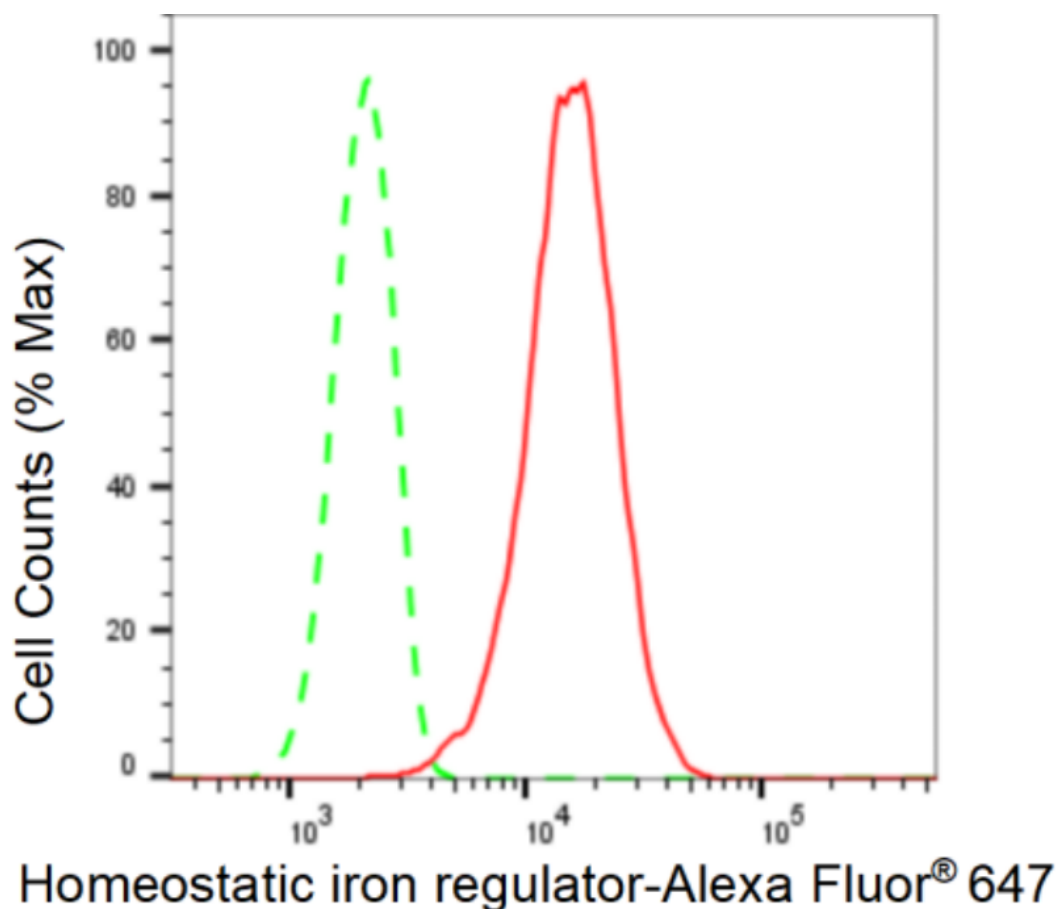
SUPPORT@GENUINBIOTECH.COM  
TEL: +1-540-855-7041

### ORDERS

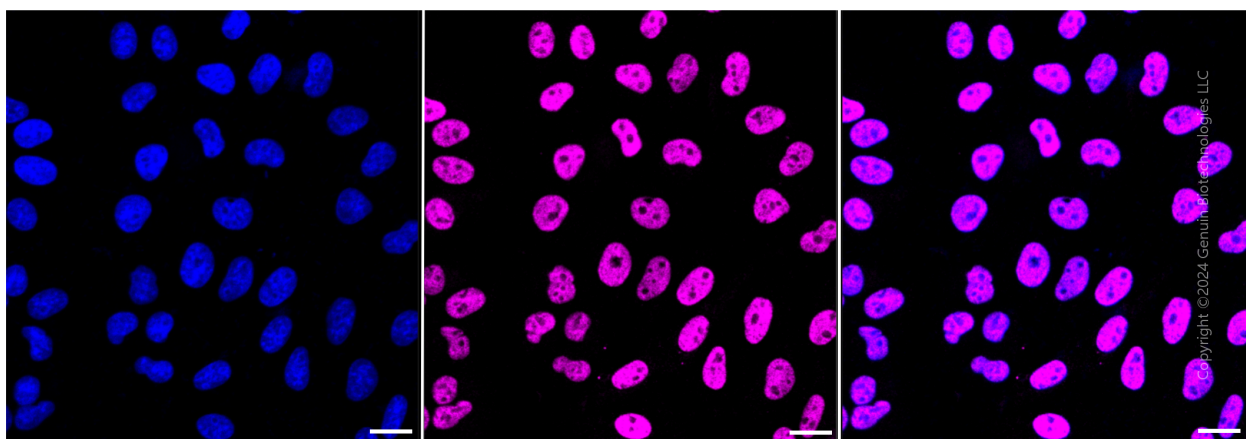
SALES@GENUINBIOTECH.COM  
FAX: +1-540-855-7041

[WWW.GENUINBIOTECH.COM](http://WWW.GENUINBIOTECH.COM)

**Validation Data**



Flow cytometric analysis of Homeostatic iron regulator expression in HepG2 cells using Homeostatic iron regulator antibody (Cat#2092, 1:2,000). Green, isotype control; red, Homeostatic iron regulator.



Immunocytochemical staining of HepG2 cells with anti-Homeostatic iron regulator antibody (Cat#2092, 1:1,000). Nuclei were stained blue with DAPI; Homeostatic iron regulator was stained magenta with Alexa Fluor® 647. Images were taken using Leica stellaris 5. Protein abundance

**SUPPORT**

SUPPORT@GENUINBIOTECH.COM  
TEL: +1-540-855-7041

**ORDERS**

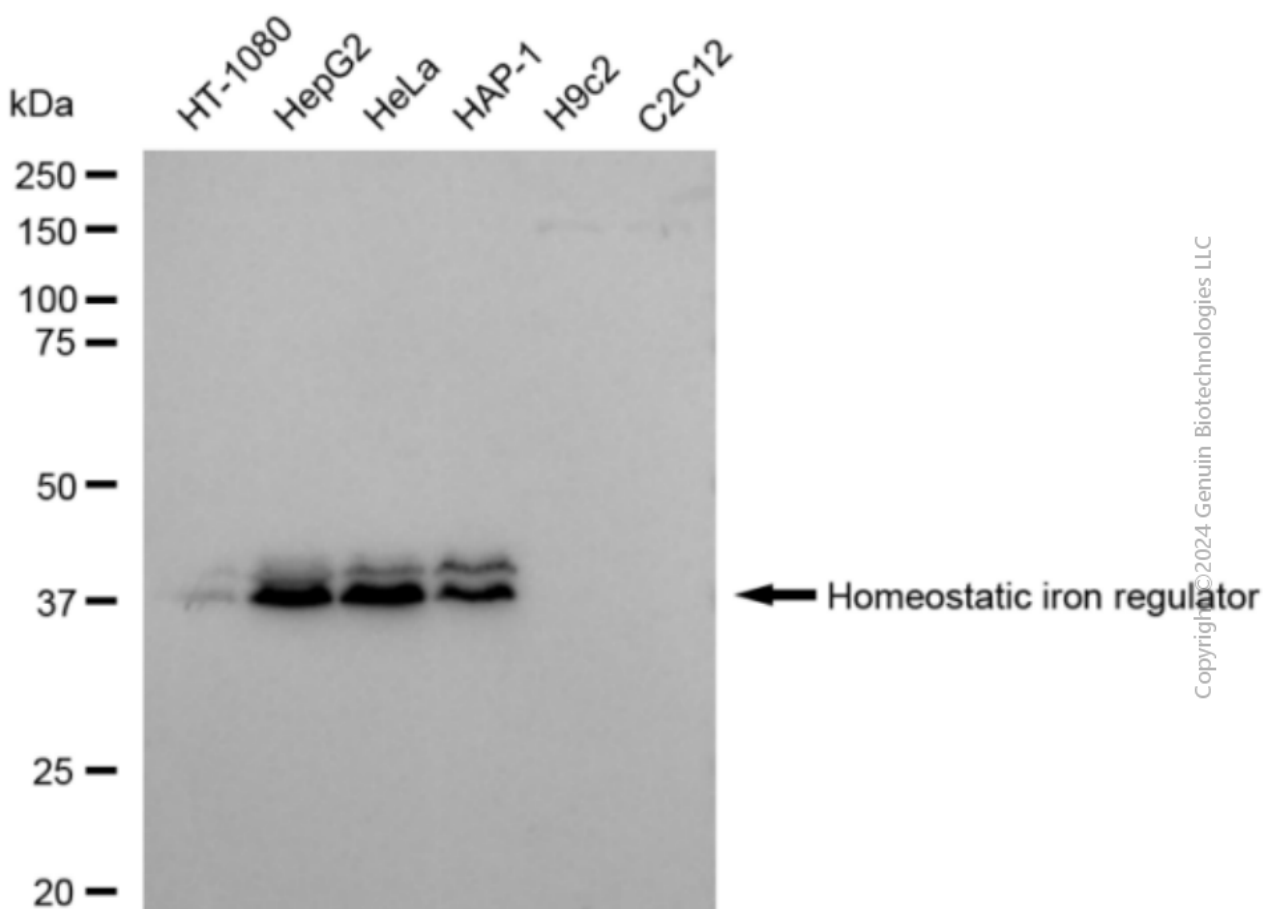
SALES@GENUINBIOTECH.COM  
FAX: +1-540-855-7041

[WWW.GENUINBIOTECH.COM](http://WWW.GENUINBIOTECH.COM)

## Anti-Homeostatic iron regulator Recombinant Rabbit Monoclonal Antibody

PAGE 3

based on laser Intensity and smart gain: Medium. Scale bar: 20  $\mu$ m.



Western blotting analysis using anti-Homeostatic iron regulator antibody (Cat#2092). Total cell lysates (30  $\mu$ g) from various cell lines were loaded and separated by SDS-PAGE. The blot was incubated with anti-Homeostatic iron regulator antibody (Cat#2092, 1:5,000) and HRP-conjugated goat anti-rabbit secondary antibody (Cat#201, 1:20,000) respectively. Image was developed using FeQ™ ECL Substrate Kit (Cat#226).

### SUPPORT

SUPPORT@GENUINBIOTECH.COM  
TEL: +1-540-855-7041

### ORDERS

SALES@GENUINBIOTECH.COM  
FAX: +1-540-855-7041

WWW.GENUINBIOTECH.COM