

Anti-Inosine Triphosphatase Recombinant Rabbit Monoclonal Antibody



Catalog #: 2095

Aliases

ITPA; Inosine Triphosphatase; Nucleoside-Triphosphate Diphosphatase; HLC14-06-P; DJ794I6.3; Inosine Triphosphatase (Nucleoside Triphosphate Pyrophosphatase); Non-Canonical Purine NTP Pyrophosphatase; Non-Standard Purine NTP Pyrophosphatase; Inosine Triphosphate Pyrophosphatase; C20orf37; ITPase; NTPase; Epididymis Secretory Sperm Binding Protein; Inosine Triphosphate Pyrophosphohydrolase; Nucleoside-Triphosphate Pyrophosphatase; Putative Oncogene Protein HLC14-06-P; Putative Oncogene Protein Hlc14-06-P; EC 3.6.1.19; EC 3.6.1.9; C20ORF37; EC 3.6.1; DEE35; My049

Background

Gene Name: ITPA

NCBI Gene Entry: [3704](#)

UniProt Entry: [Q9BY32](#)

Application Information

Molecular Weight: Predicted, 21 kDa; observed, 22 kDa

Clonality: Rabbit monoclonal antibody

Clone ID: 23GB5975

Species Reactivity: Human, mouse

Applications Tested: Western blotting (WB), flow cytometry (FCM), immunocytochemistry (IC)

Immunogen

A synthesized peptide derived from human ITPA

Isotype

Rabbit IgG

Storage Buffer

Supplied in PBS (pH 7.4) containing 50% glycerol, and 0.02% sodium azide.

Storage

Store at -20 °C for one year.

Recommended Dilutions

Western Blotting (WB): 1:1,000-1:5,000

Flow Cytometry (FCM): 1:2,000

SUPPORT

SUPPORT@GENUINBIOTECH.COM
TEL: +1-540-855-7041

ORDERS

SALES@GENUINBIOTECH.COM
FAX: +1-540-855-7041

WWW.GENUINBIOTECH.COM

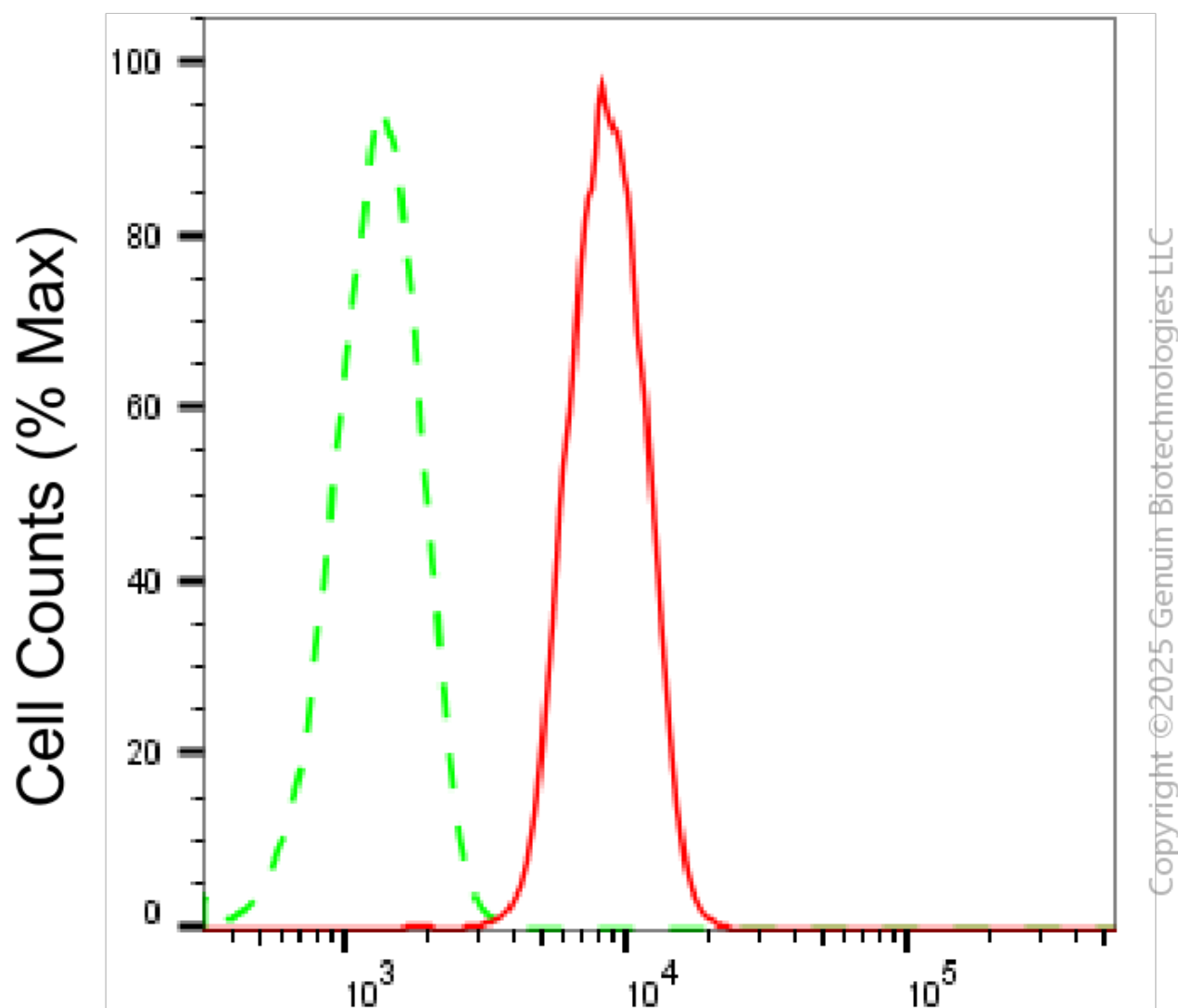
Anti-Inosine Triphosphatase Recombinant Rabbit Monoclonal Antibody

PAGE 2

Immunocytochemistry (IC): 1:100-1:1,000

Note: This product is for research use only.

Validation Data



Inosine triphosphatase-Alexa Fluor® 647

Flow cytometric analysis of Inosine triphosphatase expression in HAP-1 cells using anti-Inosine triphosphatase antibody (Cat#2095, 1:2000). Green, isotype control; red, Inosine triphosphatase.

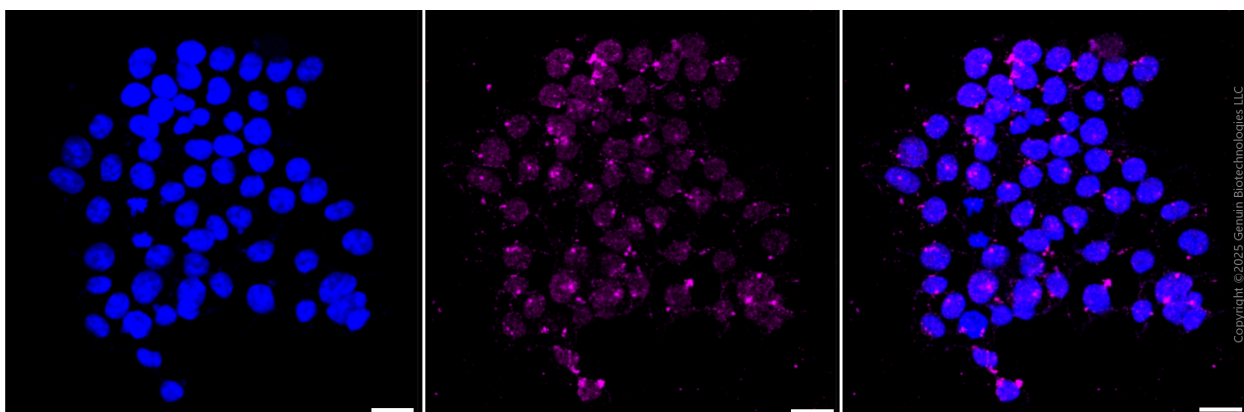
SUPPORT

SUPPORT@GENUINBIOTECH.COM
TEL: +1-540-855-7041

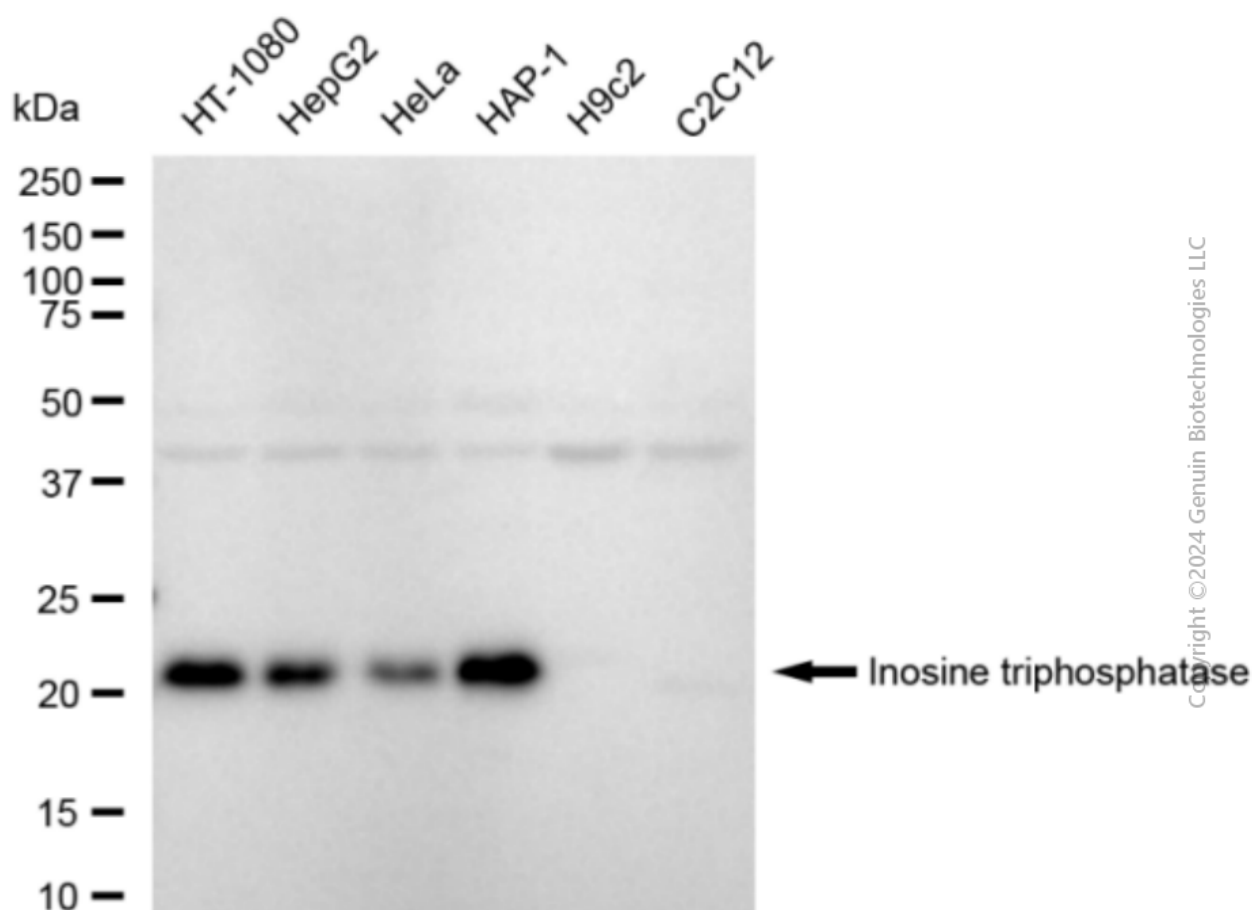
ORDERS

SALES@GENUINBIOTECH.COM
FAX: +1-540-855-7041

WWW.GENUINBIOTECH.COM



Immunocytochemical staining of HAP1 cells with anti-Inosine triphosphatase antibody (Cat #2095, 1:1,000). Nuclei were stained blue with DAPI; Inosine triphosphatase was stained magenta with Alexa Fluor® 647. Images were taken using Leica stellaris 5. Protein abundance based on laser Intensity and smart gain: Medium. Scale bar, 20 μ m.



Western blotting analysis using anti-Inosine triphosphatase antibody (Cat#2095). Total cell lysates (30 μ g) from various cell lines were loaded and separated by SDS-PAGE. The blot was incubated with anti-Inosine triphosphatase antibody (Cat#2095, 1:5,000) and HRP-conjugated goat anti-rabbit secondary antibody (Cat#201, 1:20,000) respectively. Image was developed using FeQ™

Anti-Inosine Triphosphatase Recombinant Rabbit Monoclonal Antibody

PAGE 4

ECL Substrate Kit (Cat#226).

SUPPORT

SUPPORT@GENUINBIOTECH.COM
TEL: +1-540-855-7041

ORDERS

SALES@GENUINBIOTECH.COM
FAX: +1-540-855-7041

WWW.GENUINBIOTECH.COM