

Anti-HINT1 Recombinant Rabbit Monoclonal Antibody



Catalog #: 2097

Aliases

HINT1; Histidine Triad Nucleotide Binding Protein 1; PKCI-1; PRKCNH1; HINT; Adenosine 5'-Monophosphoramidase HINT1; Protein Kinase C-Interacting Protein 1; Desumoylating Isopeptidase HINT1; Protein Kinase C Inhibitor 1; Histidine Triad Nucleotide-Binding Protein 1; Histidine Triad Nucleotide-Binding Protein; Epididymis Secretory Sperm Binding Protein; Adenosine 5'-Monophosphoramidase; EC 3.4.22.-; EC 3.9.1.-; PKCI1; NMN

Background

Gene Name: HINT1

NCBI Gene Entry: [3094](#)

UniProt Entry: [P49773](#)

Application Information

Molecular Weight: Predicted, 14 kDa; observed, 14 kDa

Clonality: Rabbit monoclonal antibody

Clone ID: 23GB5985

Species Reactivity: Human, mouse, rat

Applications Tested: Western blotting (WB), flow cytometry (FCM), immunocytochemistry (IC)

Immunogen

A synthesized peptide derived from human HINT1

Isotype

Rabbit IgG

Storage Buffer

Supplied in PBS (pH 7.4) containing 50% glycerol, and 0.02% sodium azide.

Storage

Store at -20 °C for one year.

Recommended Dilutions

Western Blotting (WB): 1:1,000-1:5,000

Flow Cytometry (FCM): 1:2,000

Immunocytochemistry (IC): 1:100-1:1,000

SUPPORT

SUPPORT@GENUINBIOTECH.COM
TEL: +1-540-855-7041

ORDERS

SALES@GENUINBIOTECH.COM
FAX: +1-540-855-7041

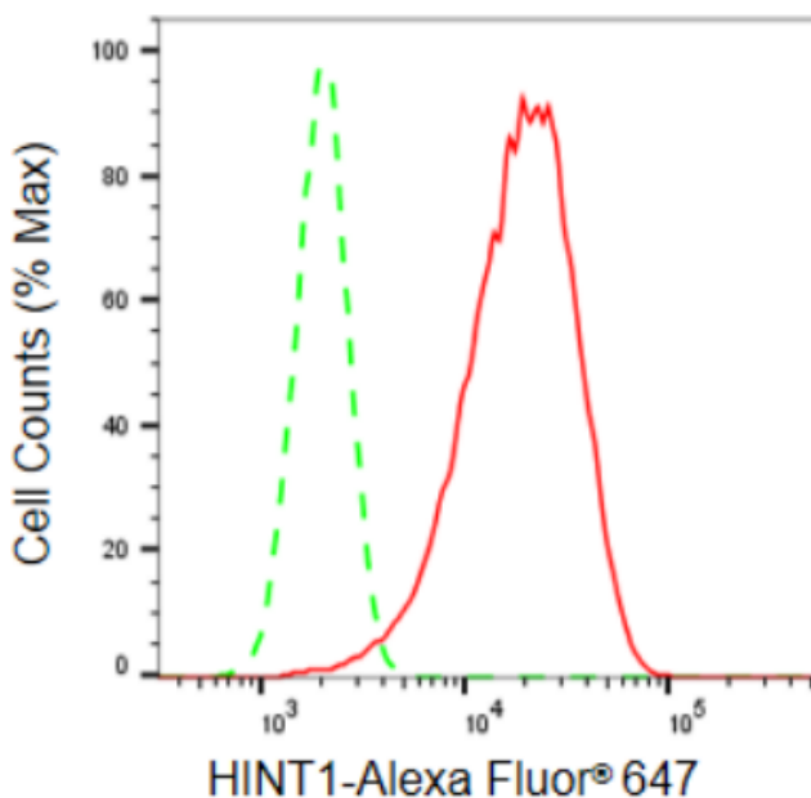
WWW.GENUINBIOTECH.COM

Anti-HINT1 Recombinant Rabbit Monoclonal Antibody

PAGE 2

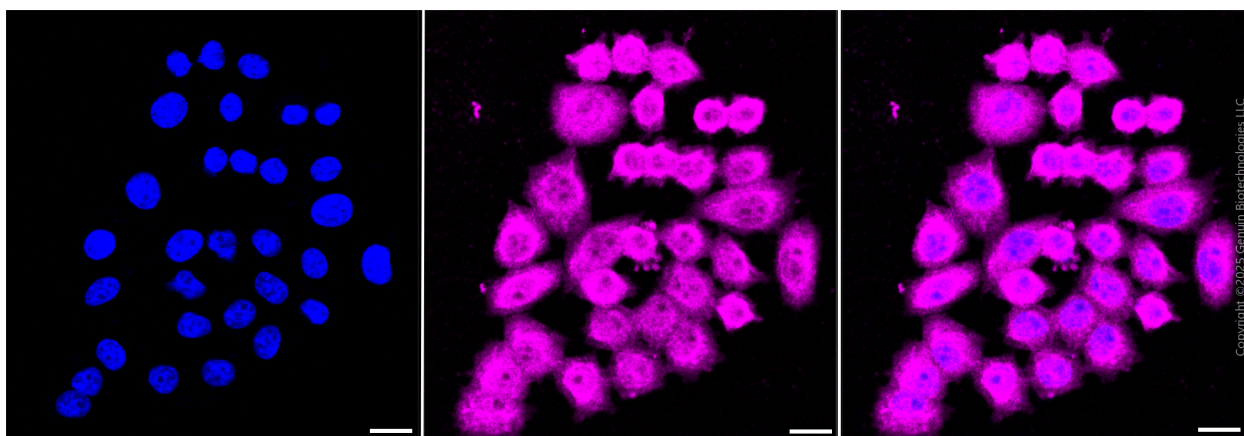
Note: This product is for research use only.

Validation Data



Copyright ©2024 Genuin Biotechnologies LLC

Flow cytometric analysis of HINT1 expression in HepG2 cells using HINT1 antibody (Cat#2097, 1:2,000). Green, isotype control; red, HINT1.



Copyright ©2025 Genuin Biotechnologies LLC

Immunocytochemical staining of HepG2 cells with anti-HINT1 antibody (Cat#2097, 1:1,000). Nuclei were stained blue with DAPI; HINT1 was stained magenta with Alexa Fluor® 647. Images

SUPPORT

SUPPORT@GENUINBIOTECH.COM
TEL: +1-540-855-7041

ORDERS

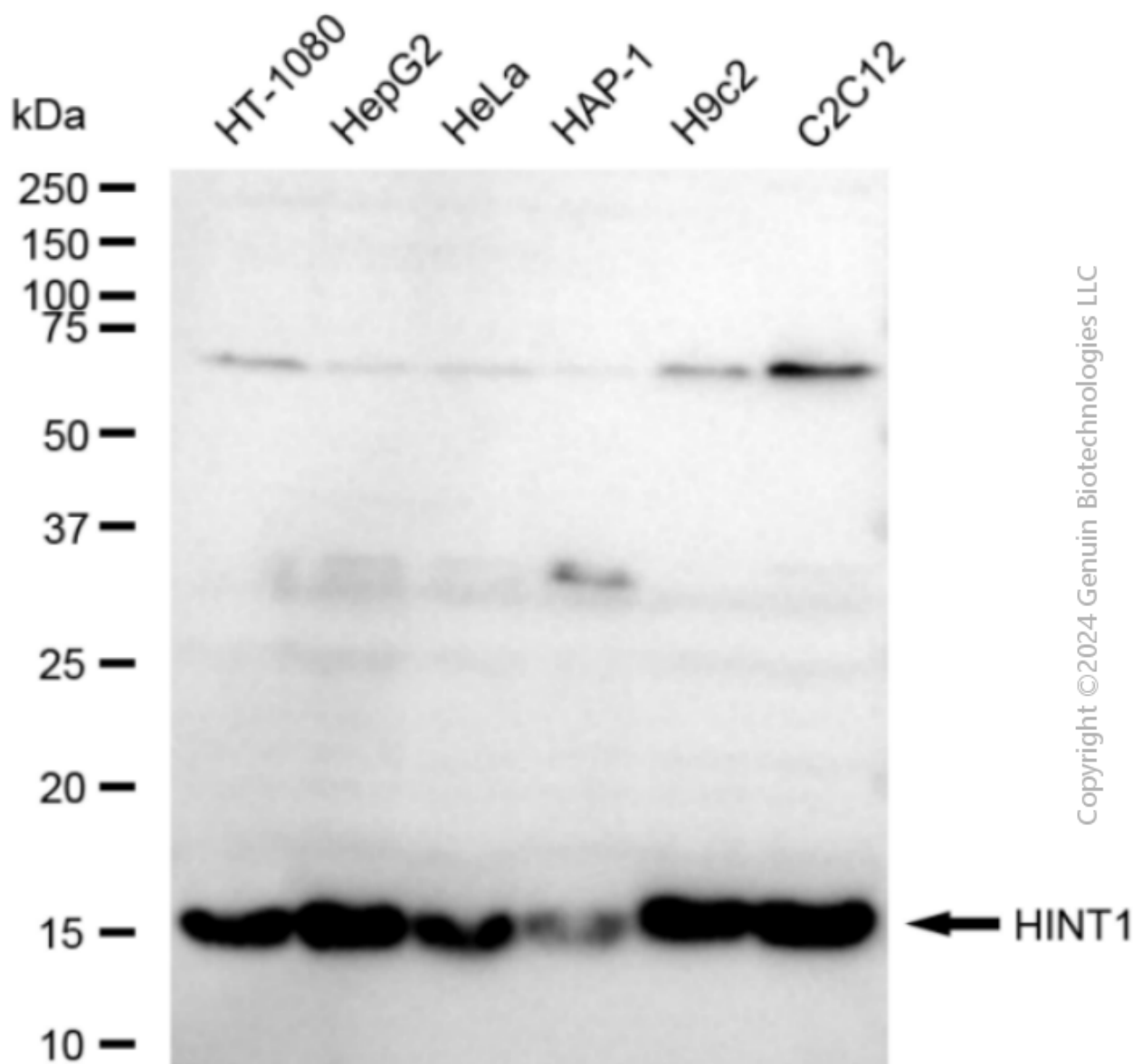
SALES@GENUINBIOTECH.COM
FAX: +1-540-855-7041

WWW.GENUINBIOTECH.COM

Anti-HINT1 Recombinant Rabbit Monoclonal Antibody

PAGE 3

were taken using Leica stellaris 5. Protein abundance based on laser Intensity and smart gain: Medium. Scale bar, 20 μ m.



Western blotting analysis using anti-HINT1 antibody (Cat#2097). Total cell lysates (30 μ g) from various cell lines were loaded and separated by SDS-PAGE. The blot was incubated with anti-HINT1 antibody (Cat#2097, 1:5,000) and HRP-conjugated goat anti-rabbit secondary antibody (Cat#201, 1:20,000) respectively. Image was developed using FeQ™ ECL Substrate Kit (Cat#226).

SUPPORT

SUPPORT@GENUINBIOTECH.COM
TEL: +1-540-855-7041

ORDERS

SALES@GENUINBIOTECH.COM
FAX: +1-540-855-7041

WWW.GENUINBIOTECH.COM