

# Anti-Phospho-Histone H3 (T3) Recombinant Rabbit Monoclonal Antibody



**Catalog #: 2102**

## Aliases

H3-3A; H3.3 Histone A; H3.3A; H3F3A; H3F3; H3 Histone Family Member 3A; H3 Histone, Family 3A; Histone H3.3; BRYLIB1; H3-3B; H3.3B; H3F3B

## Background

Gene Name: H3-3A

NCBI Gene Entry: [3020](#)

UniProt Entry: [P84243](#)

## Application Information

Molecular Weight: Predicted, 15 kDa; observed, 16 kDa

Clonality: Rabbit monoclonal antibody

Clone ID: 23GB6010

Species Reactivity: Human, mouse, rat

Applications Tested: Western blotting (WB), immunocytochemistry (IC)

## Immunogen

A synthesized peptide derived from human Phospho-Histone H3 (T3)

## Isotype

Rabbit IgG

## Storage Buffer

Supplied in PBS (pH 7.4) containing 50% glycerol, and 0.02% sodium azide.

## Storage

Store at -20 °C for one year.

## Recommended Dilutions

Western Blotting (WB): 1:1,000-1:5,000

Immunocytochemistry (IC): 1:100-1:1,000

**Note:** This product is for research use only.

## Validation Data

---

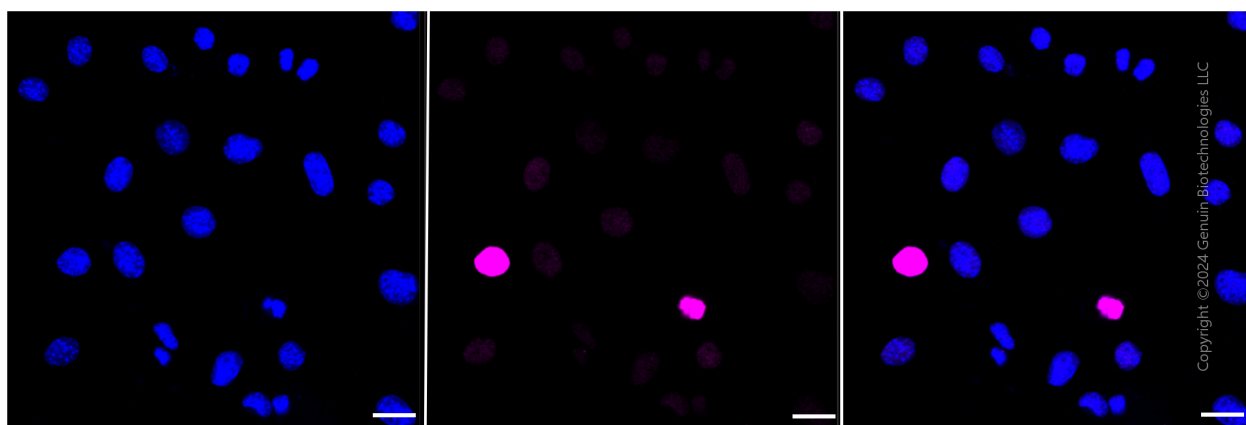
### SUPPORT

SUPPORT@GENUINBIOTECH.COM  
TEL: +1-540-855-7041

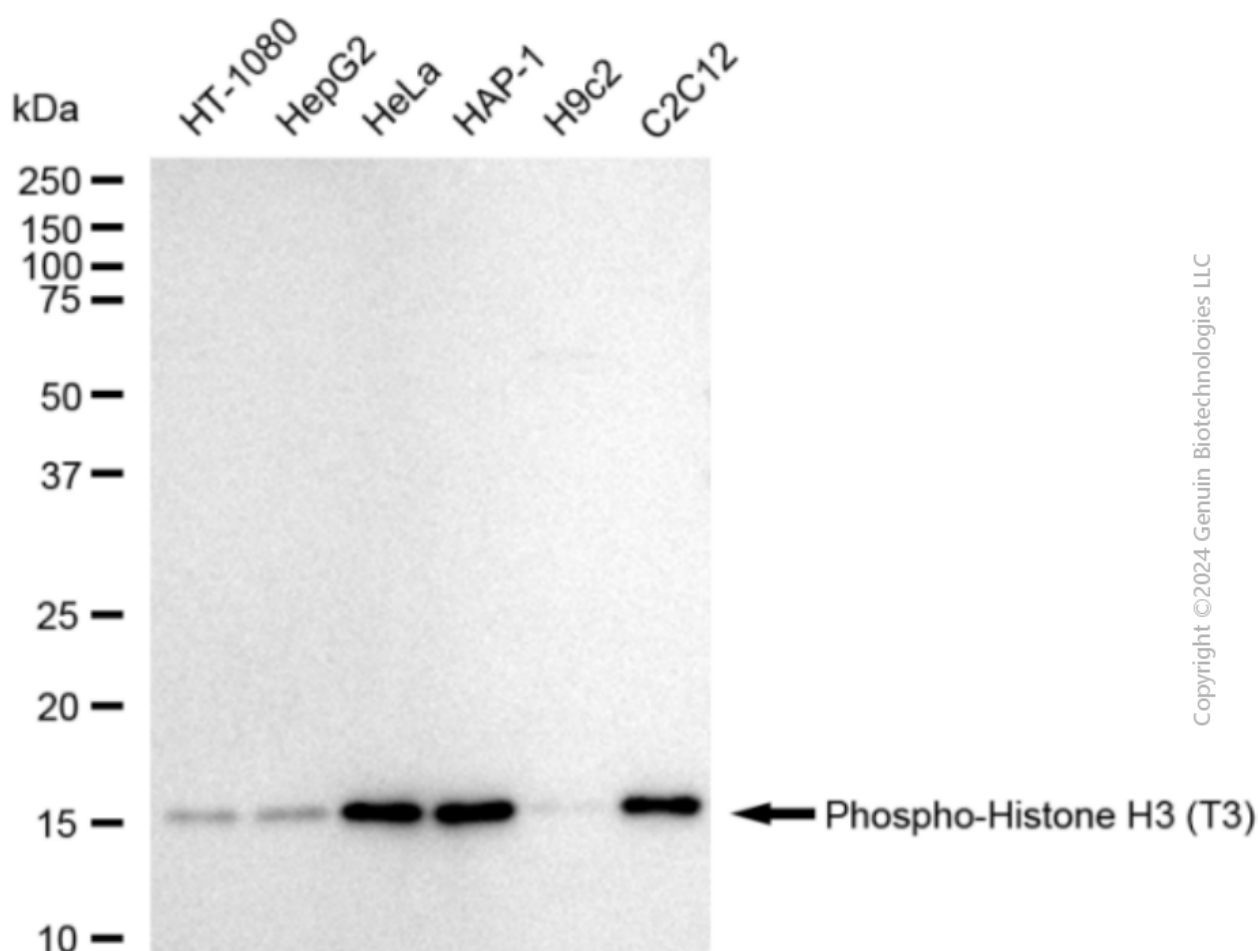
### ORDERS

SALES@GENUINBIOTECH.COM  
FAX: +1-540-855-7041

[WWW.GENUINBIOTECH.COM](http://WWW.GENUINBIOTECH.COM)



Immunocytochemical staining of C2C12 cells with anti-Phospho-Histone H3 (T3) antibody (Cat#2102, 1:1,000). Nuclei were stained blue with DAPI; Phospho-Histone H3 (T3) was stained magenta with Alexa Fluor® 647. Images were taken using Leica stellaris 5. Protein abundance based on laser Intensity and smart gain: High. Scale bar: 20 µm.



Western blotting analysis using anti-Phospho-Histone H3 (T3) antibody (Cat#2102). Total cell lysates (5 µg) from various cell lines were loaded and separated by SDS-PAGE. The blot was incubated with anti-Phospho-Histone H3 (T3) antibody (Cat#2102, 1:5,000) and HRP-conjugated

## **Anti-Phospho-Histone H3 (T3) Recombinant Rabbit Monoclonal Antibody**

PAGE 3

goat anti-rabbit secondary antibody (Cat#201, 1:20,000) respectively. Image was developed using FeQ™ ECL Substrate Kit (Cat#226).

---

### **SUPPORT**

SUPPORT@GENUINBIOTECH.COM  
TEL: +1-540-855-7041

### **ORDERS**

SALES@GENUINBIOTECH.COM  
FAX: +1-540-855-7041

**WWW.GENUINBIOTECH.COM**