

# Anti-Phospho-Histone H3.3 (S31) Recombinant Rabbit Monoclonal Antibody



**Catalog #: 2103**

## Aliases

H3-3A; H3.3 Histone A; H3.3A; H3F3A; H3F3; H3 Histone Family Member 3A; H3 Histone, Family 3A; Histone H3.3; BRYLIB1; H3-3B; H3.3B; H3F3B

## Background

Gene Name: H3-3A

NCBI Gene Entry: [3020](#)

UniProt Entry: [P84243](#)

## Application Information

Molecular Weight: Predicted, 15 kDa; observed, 17 kDa

Clonality: Rabbit monoclonal antibody

Clone ID: 23GB6015

Species Reactivity: Human, mouse, rat

Applications Tested: Western blotting (WB), flow cytometry (FCM), immunocytochemistry (IC), immunohistochemistry (IHC)

## Immunogen

A synthesized peptide derived from human Phospho-Histone H3.3 (S31)

## Isotype

Rabbit IgG

## Storage Buffer

Supplied in PBS (pH 7.4) containing 50% glycerol, and 0.02% sodium azide.

## Storage

Store at -20 °C for one year.

## Recommended Dilutions

Western Blotting (WB): 1:1,000-1:5,000

Flow Cytometry (FCM): 1:2,000

Immunocytochemistry (IC): 1:100-1:1,000

Immunohistochemistry (IHC): 1:100-1:200

---

### SUPPORT

SUPPORT@GENUINBIOTECH.COM  
TEL: +1-540-855-7041

### ORDERS

SALES@GENUINBIOTECH.COM  
FAX: +1-540-855-7041

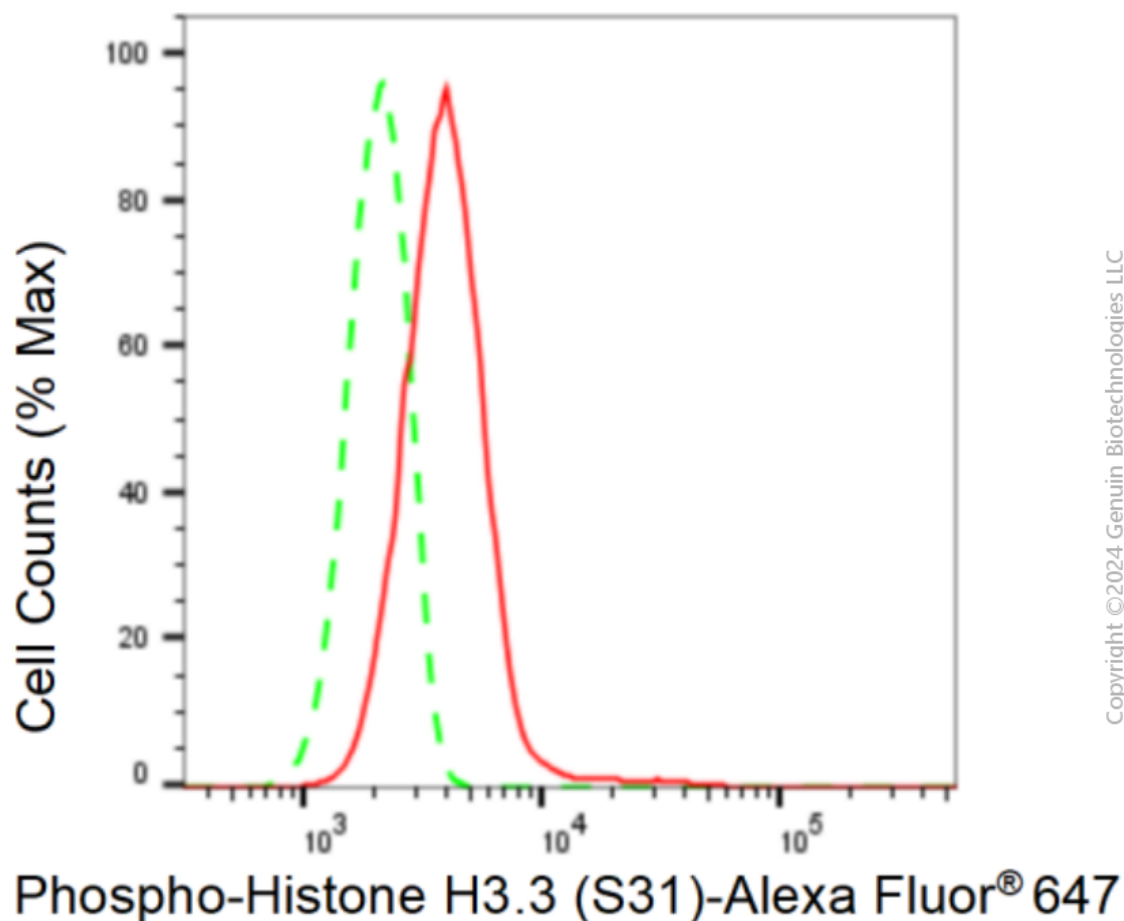
[WWW.GENUINBIOTECH.COM](http://WWW.GENUINBIOTECH.COM)

# Anti-Phospho-Histone H3.3 (S31) Recombinant Rabbit Monoclonal Antibody

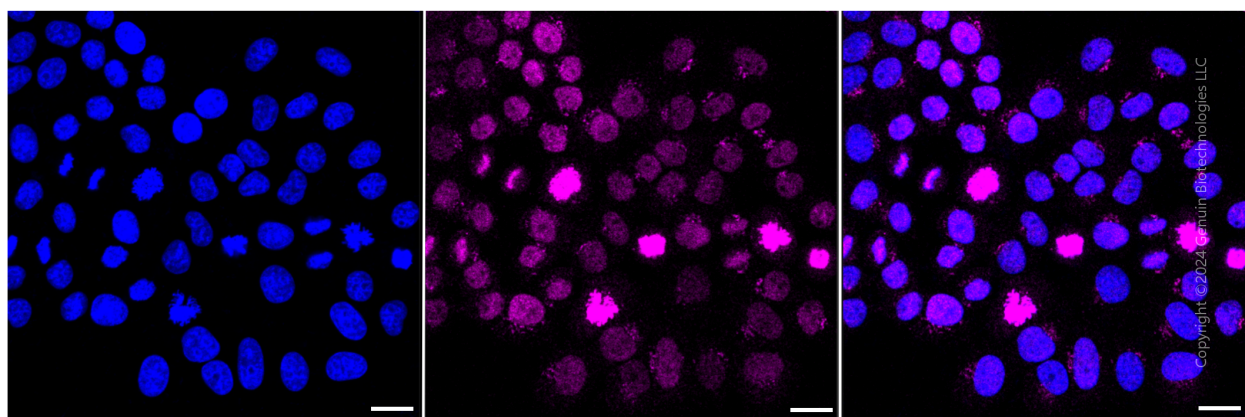
PAGE 2

**Note:** This product is for research use only.

## Validation Data



Flow cytometric analysis of Phospho-Histone H3.3 (S31) expression in HepG2 cells using Phospho-Histone H3.3 (S31) antibody (Cat#2103, 1:2,000). Green, isotype control; red, Phospho-Histone H3.3 (S31).



Immunocytochemical staining of HepG2 cells with anti-Phospho-Histone H3.3 (S31) antibody

### SUPPORT

SUPPORT@GENUINBIOTECH.COM  
TEL: +1-540-855-7041

### ORDERS

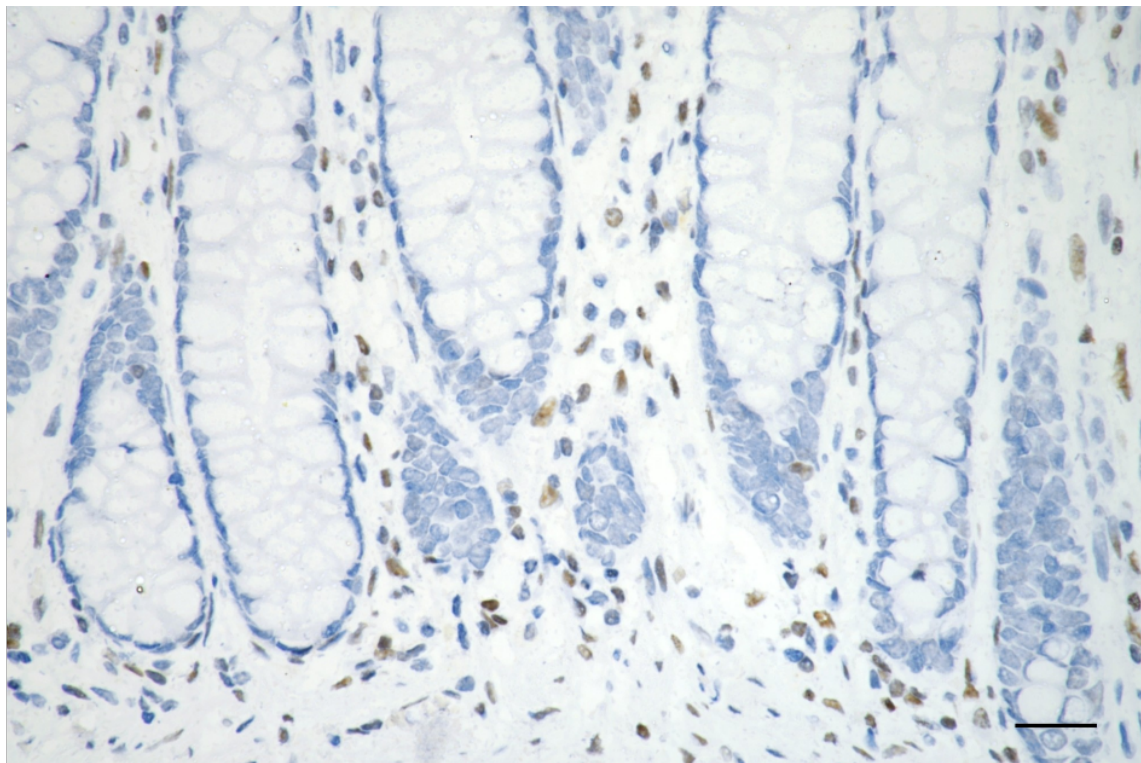
SALES@GENUINBIOTECH.COM  
FAX: +1-540-855-7041

WWW.GENUINBIOTECH.COM

## Anti-Phospho-Histone H3.3 (S31) Recombinant Rabbit Monoclonal Antibody

PAGE 3

(Cat#2103, 1:1,000). Nuclei were stained blue with DAPI; Phospho-Histone H3.3 (S31) was stained magenta with Alexa Fluor® 647. Images were taken using Leica stellaris 5. Protein abundance based on laser Intensity and smart gain: Medium. Scale bar: 20  $\mu$ m.



Copyright ©2025 Genuin Biotechnologies LLC

Immunohistochemistry was performed on paraffin-embedded human sigmoid colon carcinoma using anti-phospho-histone H3.3 (S31) antibody (Cat#2103, 1:200). Antigen retrieval was done in sodium citrate buffer (pH 6.0). DAB was used for detection, with hematoxylin counterstaining. Images were acquired using a Nikon Ci-L Plus microscope (40 $\times$  objective). Scale bar: 25  $\mu$ m.

### SUPPORT

SUPPORT@GENUINBIOTECH.COM  
TEL: +1-540-855-7041

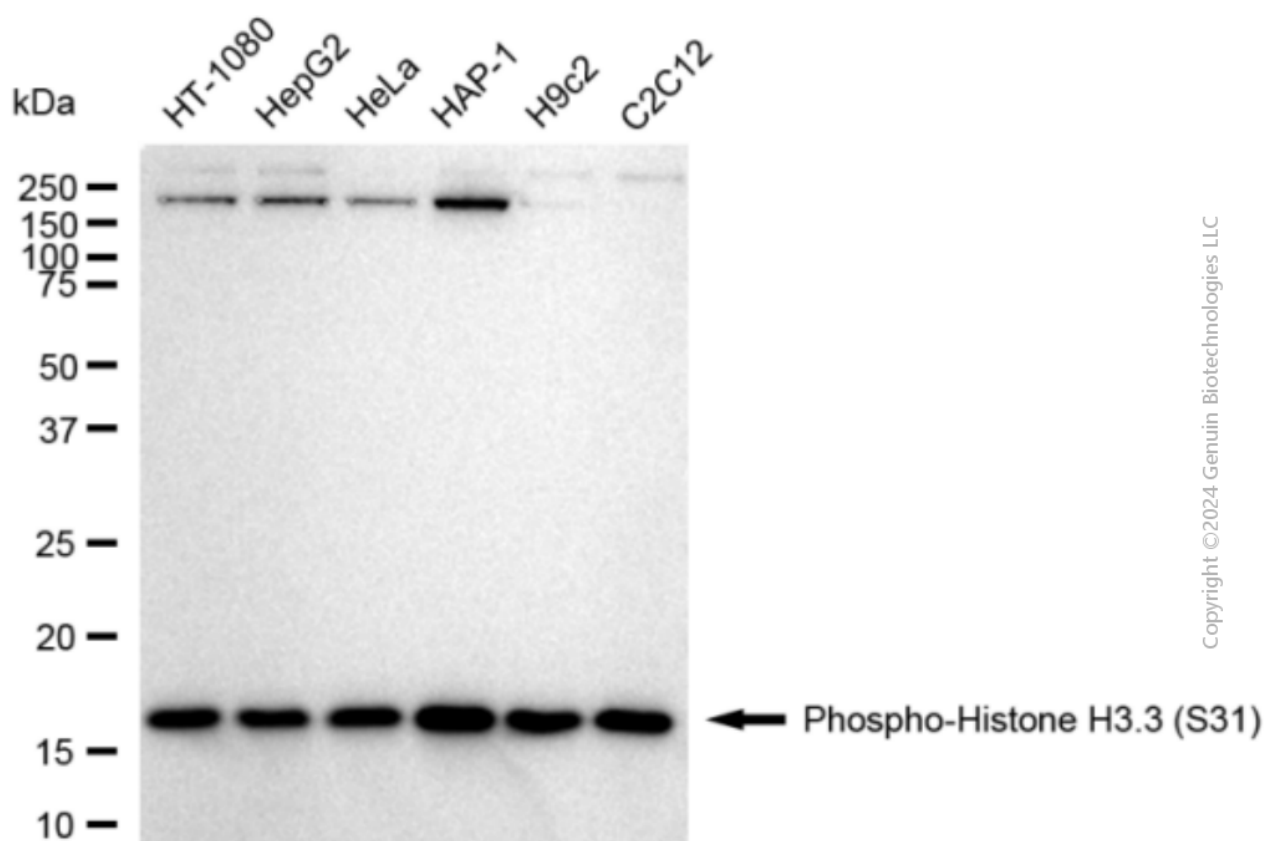
### ORDERS

SALES@GENUINBIOTECH.COM  
FAX: +1-540-855-7041

[WWW.GENUINBIOTECH.COM](http://WWW.GENUINBIOTECH.COM)

## Anti-Phospho-Histone H3.3 (S31) Recombinant Rabbit Monoclonal Antibody

PAGE 4



Western blotting analysis using anti-Phospho-Histone H3.3 (S31) antibody (Cat#2103). Total cell lysates (5  $\mu$ g) from various cell lines were loaded and separated by SDS-PAGE. The blot was incubated with anti-Phospho-Histone H3.3 (S31) antibody (Cat#2103, 1:5,000) and HRP-conjugated goat anti-rabbit secondary antibody (Cat#201, 1:20,000) respectively. Image was developed using FeQ™ ECL Substrate Kit (Cat#226).

### SUPPORT

SUPPORT@GENUINBIOTECH.COM  
TEL: +1-540-855-7041

### ORDERS

SALES@GENUINBIOTECH.COM  
FAX: +1-540-855-7041

[WWW.GENUINBIOTECH.COM](http://WWW.GENUINBIOTECH.COM)