

Anti-Lactate dehydrogenase A Recombinant Rabbit Monoclonal Antibody



Catalog #: 2112

Aliases

LDHA; Lactate Dehydrogenase A; Cell Proliferation-Inducing Gene 19 Protein; Renal Carcinoma Antigen NY-REN-59; L-Lactate Dehydrogenase A Chain; LDH Muscle Subunit; EC 1.1.1.27; LDH-A; LDH-M; Epididymis Secretory Sperm Binding Protein Li 133P; Proliferation-Inducing Gene 19; Lactate Dehydrogenase M; HEL-S-133P; EC 1.1.1; GSD11; PIG19; LDHM

Background

Gene Name: LDHA

NCBI Gene Entry: [3939](#)

UniProt Entry: [P00338](#)

Application Information

Molecular Weight: Predicted, 37 kDa; observed, 36 kDa

Clonality: Rabbit monoclonal antibody

Clone ID: 23GB6060

Species Reactivity: Human, mouse, rat

Applications Tested: Western blotting (WB), flow cytometry (FCM), immunocytochemistry (IC)

Immunogen

A synthesized peptide derived from human Lactate Dehydrogenase A

Isotype

Rabbit IgG

Storage Buffer

Supplied in PBS (pH 7.4) containing 50% glycerol, and 0.02% sodium azide.

Storage

Store at -20 °C for one year.

Recommended Dilutions

Western Blotting (WB): 1:1,000-1:5,000

Flow Cytometry (FCM): 1:2,000

Immunocytochemistry (IC): 1:100-1:1,000

SUPPORT

SUPPORT@GENUINBIOTECH.COM
TEL: +1-540-855-7041

ORDERS

SALES@GENUINBIOTECH.COM
FAX: +1-540-855-7041

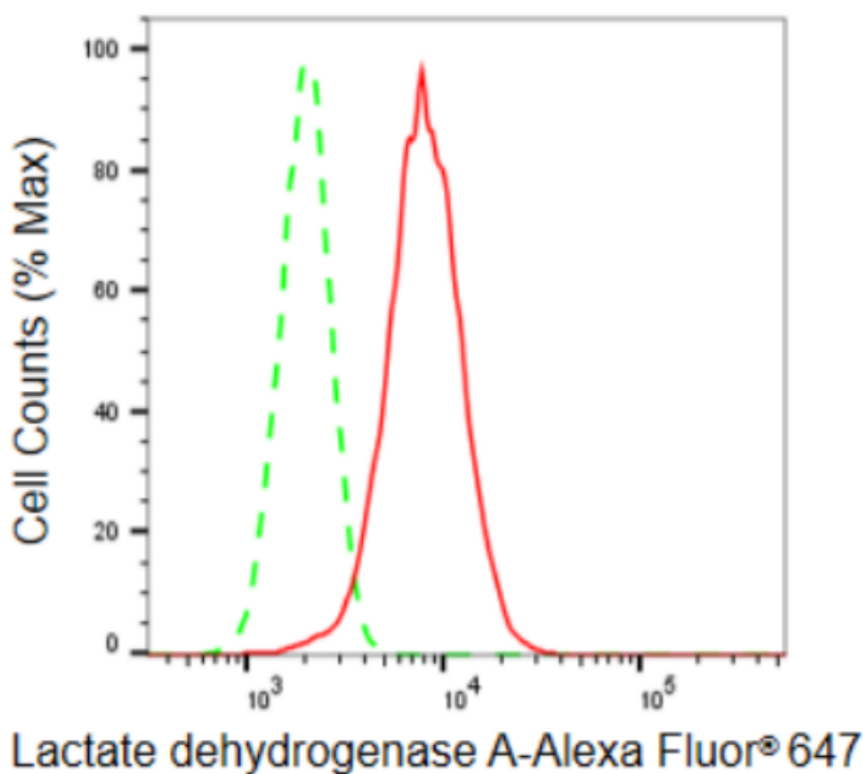
WWW.GENUINBIOTECH.COM

Anti-Lactate dehydrogenase A Recombinant Rabbit Monoclonal Antibody

PAGE 2

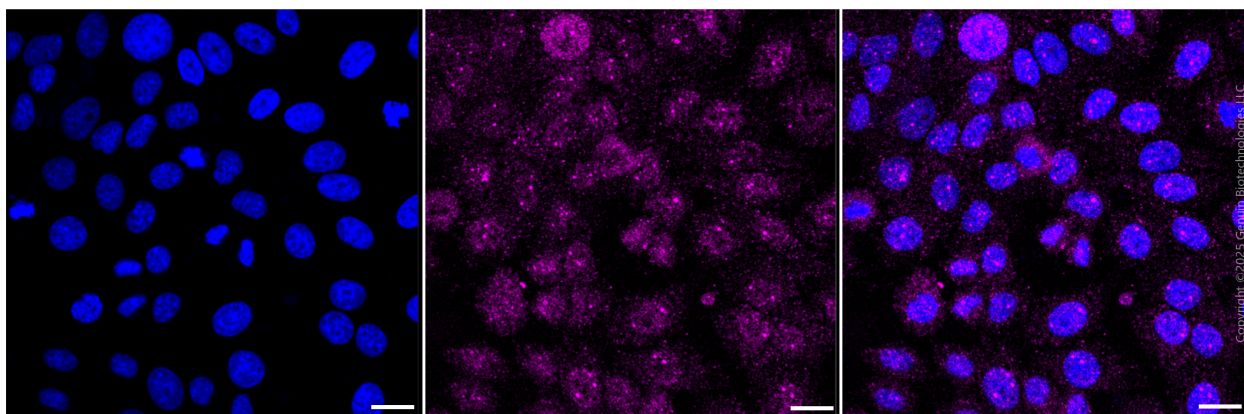
Note: This product is for research use only.

Validation Data



Copyright ©2024 Genuin Biotechnologies LLC

Flow cytometric analysis of Lactate dehydrogenase A expression in HepG2 cells using Lactate dehydrogenase A antibody (Cat#2112, 1:2,000). Green, isotype control; red, Lactate dehydrogenase A.



Immunocytochemical staining of HepG2 cells with anti-Lactate dehydrogenase A antibody (Cat#2112, 1:1,000). Nuclei were stained blue with DAPI; Lactate dehydrogenase A was stained magenta with Alexa Fluor® 647. Images were taken using Leica stellaris 5. Protein abundance

SUPPORT

SUPPORT@GENUINBIOTECH.COM
TEL: +1-540-855-7041

ORDERS

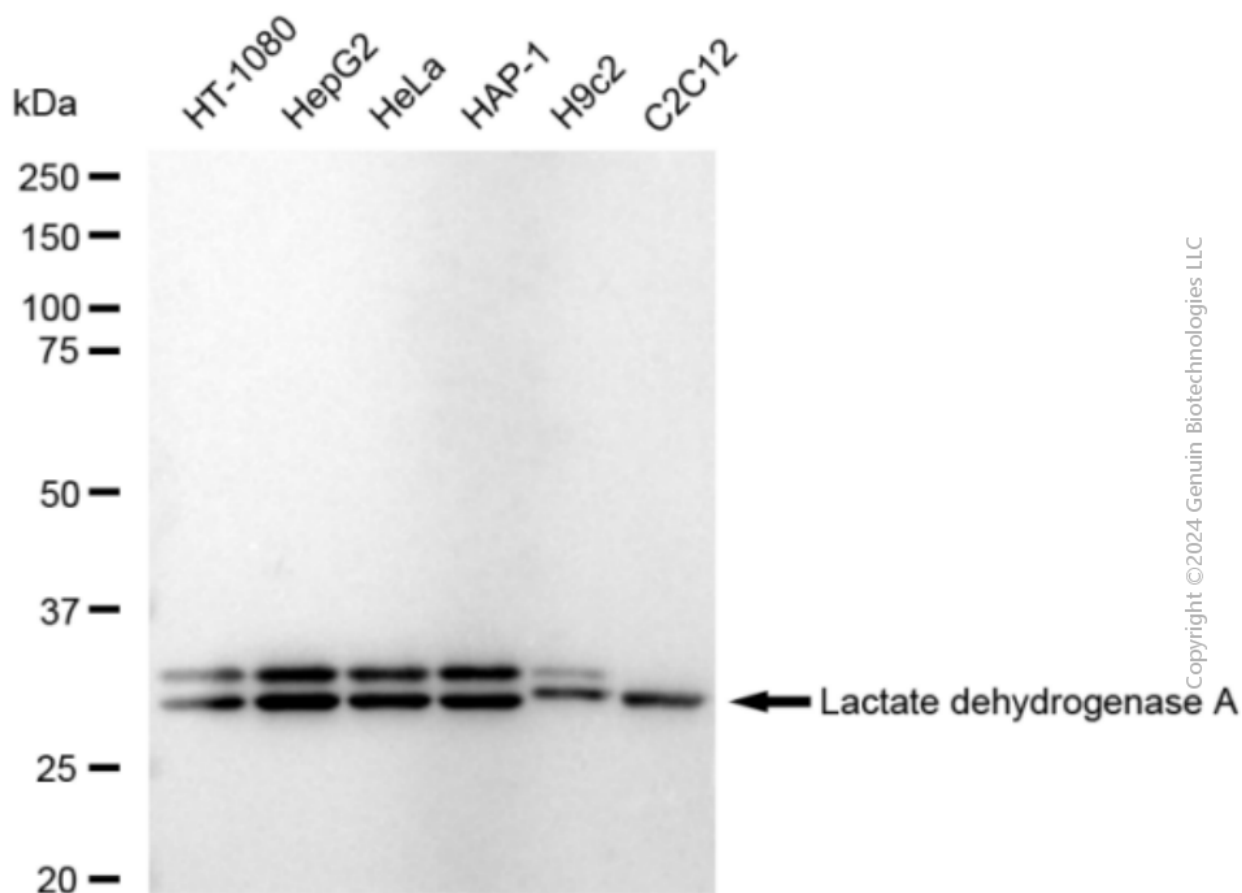
SALES@GENUINBIOTECH.COM
FAX: +1-540-855-7041

WWW.GENUINBIOTECH.COM

Anti-Lactate dehydrogenase A Recombinant Rabbit Monoclonal Antibody

PAGE 3

based on laser Intensity and smart gain: Low. Scale bar, 20 μ m.



Western blotting analysis using anti-Lactate dehydrogenase A antibody (Cat#2112). Total cell lysates (30 μ g) from various cell lines were loaded and separated by SDS-PAGE. The blot was incubated with anti-Lactate dehydrogenase A antibody (Cat#2112, 1:5,000) and HRP-conjugated goat anti-rabbit secondary antibody (Cat#201, 1:20,000) respectively. Image was developed using FeQ™ ECL Substrate Kit (Cat#226).

SUPPORT

SUPPORT@GENUINBIOTECH.COM
TEL: +1-540-855-7041

ORDERS

SALES@GENUINBIOTECH.COM
FAX: +1-540-855-7041

WWW.GENUINBIOTECH.COM