

Catalog #: 2114

Aliases

IFNAR1; Interferon Alpha And Beta Receptor Subunit 1; Interferon Alpha/Beta Receptor 1; Type I Interferon Receptor 1; IFNAR; IFRC; Interferon (Alpha, Beta And Omega) Receptor 1; Cytokine Receptor Class-II Member 1; Cytokine Receptor Family 2 Member 1; IFN-Alpha/Beta Receptor 1; IFNalpha/Beta Receptor 1; IFN-R-1; CRF2-1; Interferon-Alpha/Beta Receptor Alpha Chain; Alpha-Type Antiviral Protein; Beta-Type Antiviral Protein; Interferon-Beta Receptor 1; Interferon Receptor 1; IFN-Alpha-REC; IMD106; IFNBR; AVP

Background

Gene Name: IFNAR1

NCBI Gene Entry: [3454](#)

UniProt Entry: [P17181](#)

Application Information

Molecular Weight: Predicted, 64 kDa; observed, 130 kDa

Clonality: Rabbit monoclonal antibody

Clone ID: 23GB6070

Species Reactivity: Human, mouse, rat

Applications Tested: Western blotting (WB), flow cytometry (FCM), immunocytochemistry (IC)

Immunogen

A synthesized peptide derived from human IFNAR1

Isotype

Rabbit IgG

Storage Buffer

Supplied in PBS (pH 7.4) containing 50% glycerol, and 0.02% sodium azide.

Storage

Store at -20 °C for one year.

Recommended Dilutions

Western Blotting (WB): 1:1,000-1:5,000

Flow Cytometry (FCM): 1:2,000

Immunocytochemistry (IC): 1:100-1:1,000

SUPPORT

SUPPORT@GENUINBIOTECH.COM
TEL: +1-540-855-7041

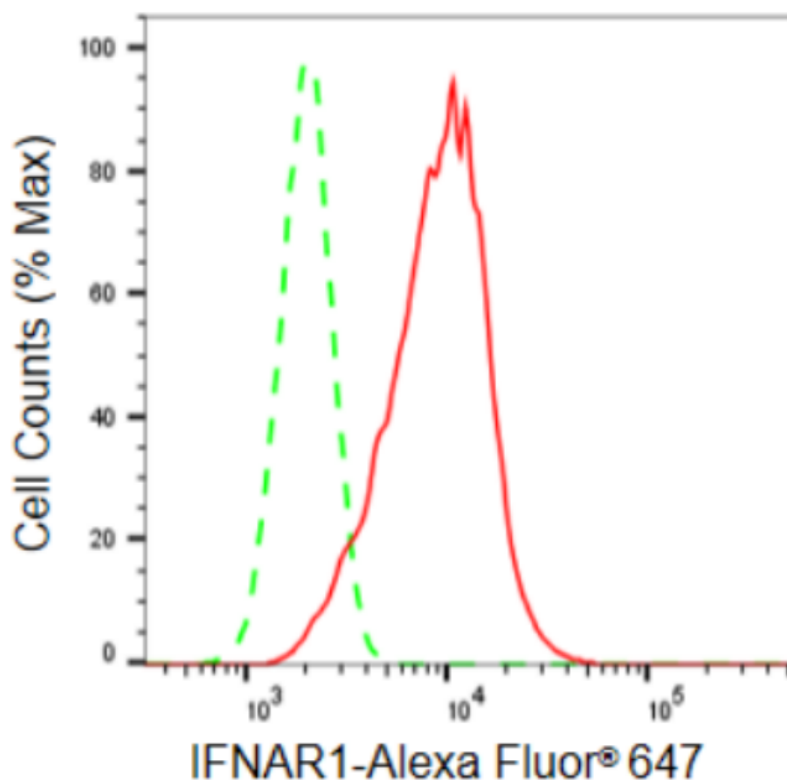
ORDERS

SALES@GENUINBIOTECH.COM
FAX: +1-540-855-7041

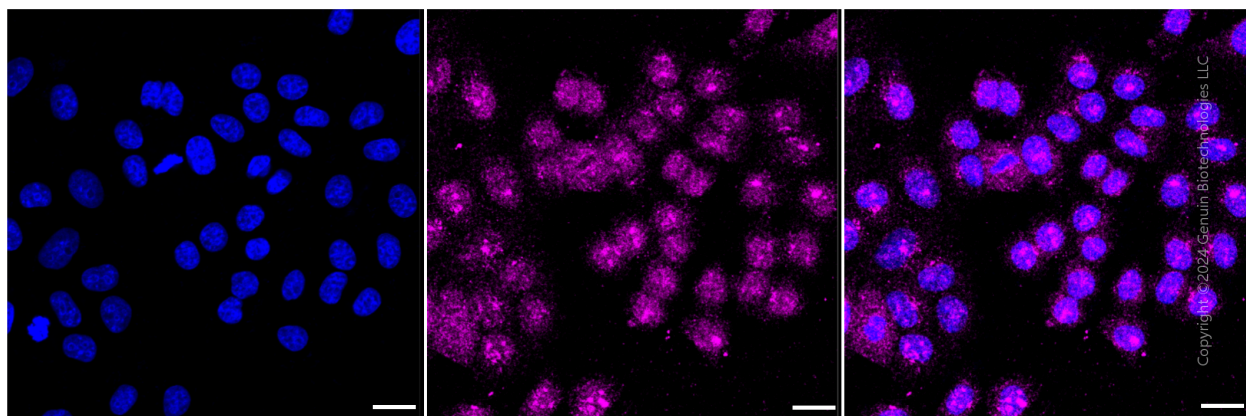
WWW.GENUINBIOTECH.COM

Note: This product is for research use only.

Validation Data



Copyright ©2024 Genuin Biotechnologies LLC



Copyright ©2024 Genuin Biotechnologies LLC

SUPPORT

SUPPORT@GENUINBIOTECH.COM
TEL: +1-540-855-7041

ORDERS

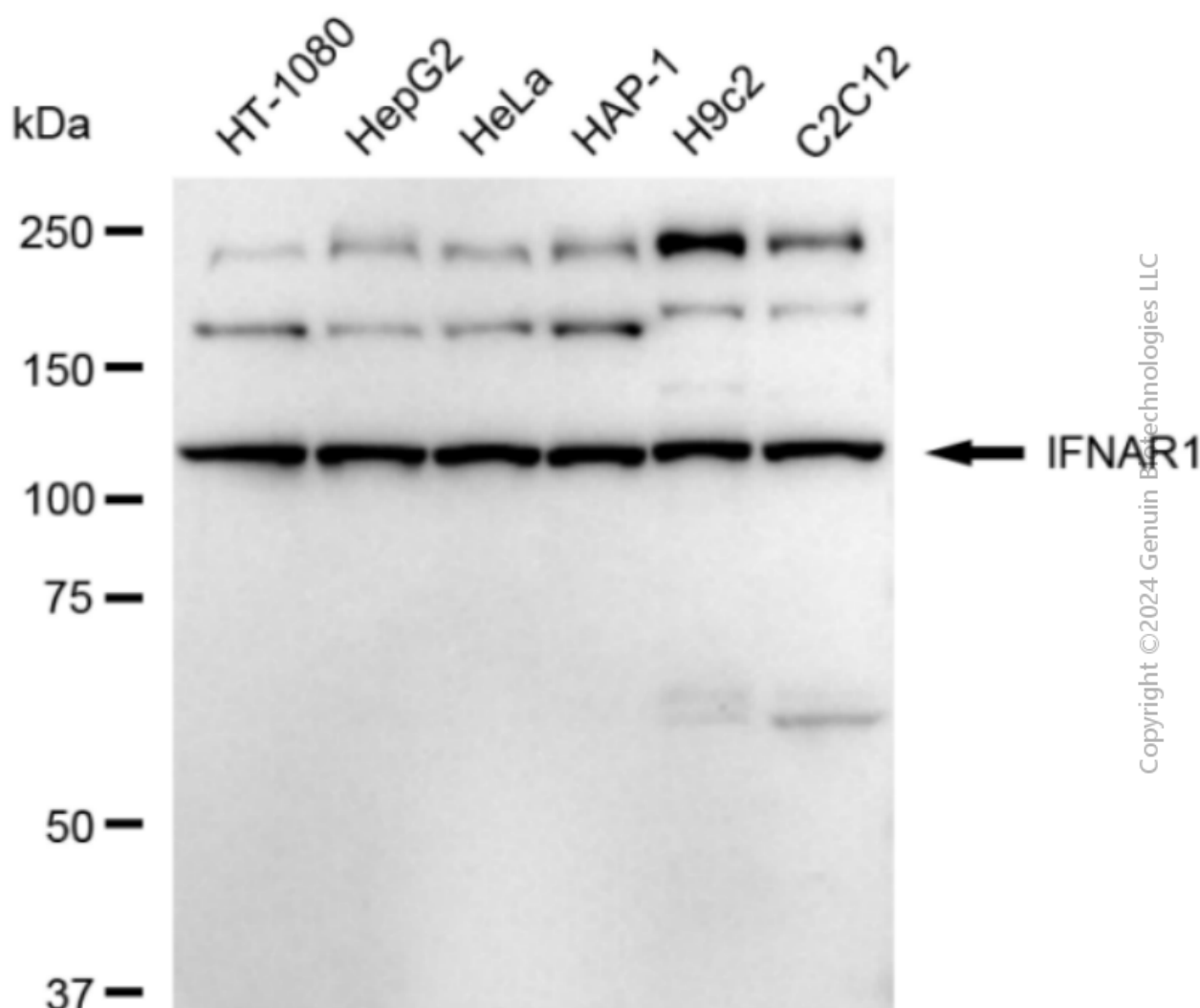
SALES@GENUINBIOTECH.COM
FAX: +1-540-855-7041

WWW.GENUINBIOTECH.COM

Anti-IFNAR1 Recombinant Rabbit Monoclonal Antibody

PAGE 3

gain: Medium. Scale bar: 20 μ m.



Western blotting analysis using anti-IFNAR1 antibody (Cat#2114). Total cell lysates (30 μ g) from various cell lines were loaded and separated by SDS-PAGE. The blot was incubated with anti-IFNAR1 antibody (Cat#2114, 1:5,000) and HRP-conjugated goat anti-rabbit secondary antibody (Cat#201, 1:20,000) respectively. Image was developed using FeQTM ECL Substrate Kit (Cat#226).

SUPPORT

SUPPORT@GENUINBIOTECH.COM
TEL: +1-540-855-7041

ORDERS

SALES@GENUINBIOTECH.COM
FAX: +1-540-855-7041

WWW.GENUINBIOTECH.COM