

Anti-IGF2R Recombinant Rabbit Monoclonal Antibody



Catalog #: 2119

Aliases

IGF2R; Insulin Like Growth Factor 2 Receptor; MPRI; CI-M6PR; CI-MPR; MPR300; CD222; CIMPR; M6P-R; MPR1; Cation-Independent Mannose-6-Phosphate Receptor; Insulin-Like Growth Factor II Receptor; Insulin-Like Growth Factor 2 Receptor; 300 KDa Mannose 6-Phosphate Receptor; CI Man-6-P Receptor; M6P/IGF2 Receptor; IGF-II Receptor; M6P/IGF2R; MPR 300; Cation-Independent Mannose-6 Phosphate Receptor; CD222 Antigen; M6PR

Background

Gene Name: IGF2R

NCBI Gene Entry: [3482](#)

UniProt Entry: [P11717](#)

Application Information

Molecular Weight: Predicted, 274 kDa; observed, 274 kDa

Clonality: Rabbit monoclonal antibody

Clone ID: 23GB6090

Species Reactivity: Human, mouse, rat

Applications Tested: Western blotting (WB), flow cytometry (FCM), immunocytochemistry (IC)

Immunogen

A synthesized peptide derived from human M6PR/IGF2R

Isotype

Rabbit IgG

Storage Buffer

Supplied in PBS (pH 7.4) containing 50% glycerol, and 0.02% sodium azide.

Storage

Store at -20 °C for one year.

Recommended Dilutions

Western Blotting (WB): 1:1,000-1:5,000

Flow Cytometry (FCM): 1:2,000

Immunocytochemistry (IC): 1:100-1:1,000

SUPPORT

SUPPORT@GENUINBIOTECH.COM
TEL: +1-540-855-7041

ORDERS

SALES@GENUINBIOTECH.COM
FAX: +1-540-855-7041

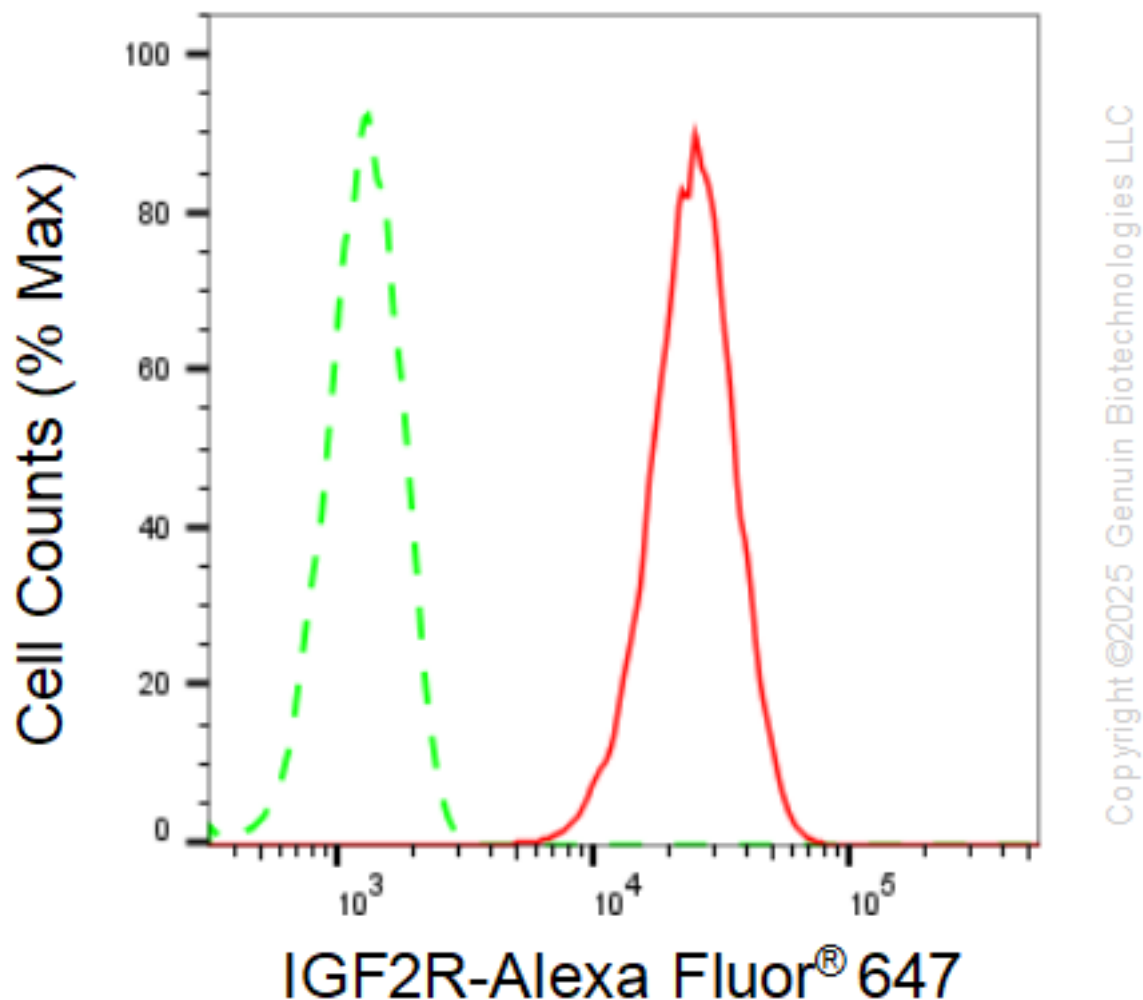
WWW.GENUINBIOTECH.COM

Anti-IGF2R Recombinant Rabbit Monoclonal Antibody

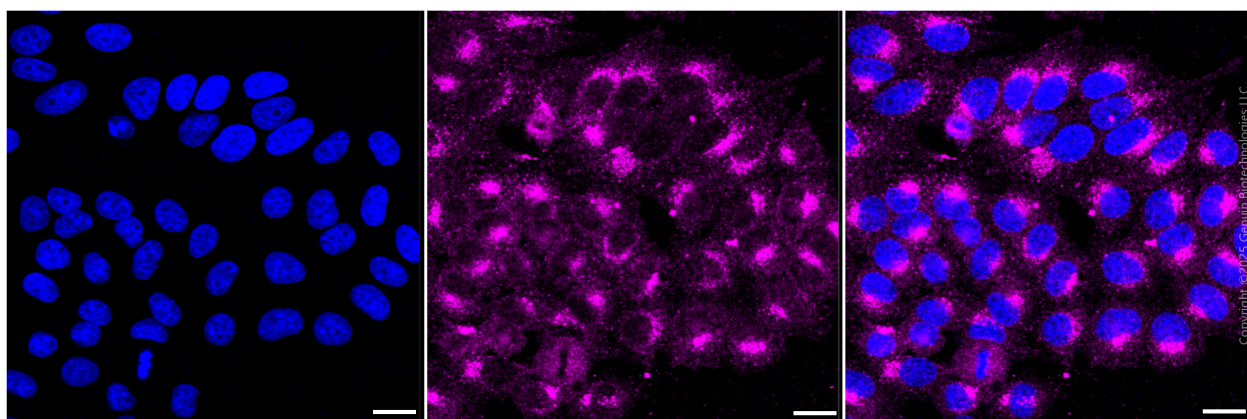
PAGE 2

Note: This product is for research use only.

Validation Data



Flow cytometric analysis of IGF2R expression in HepG2 cells using anti-IGF2R antibody (Cat#2119, 1 μ g/2000). Green, isotype control; red, IGF2R.



SUPPORT

SUPPORT@GENUINBIOTECH.COM
TEL: +1-540-855-7041

ORDERS

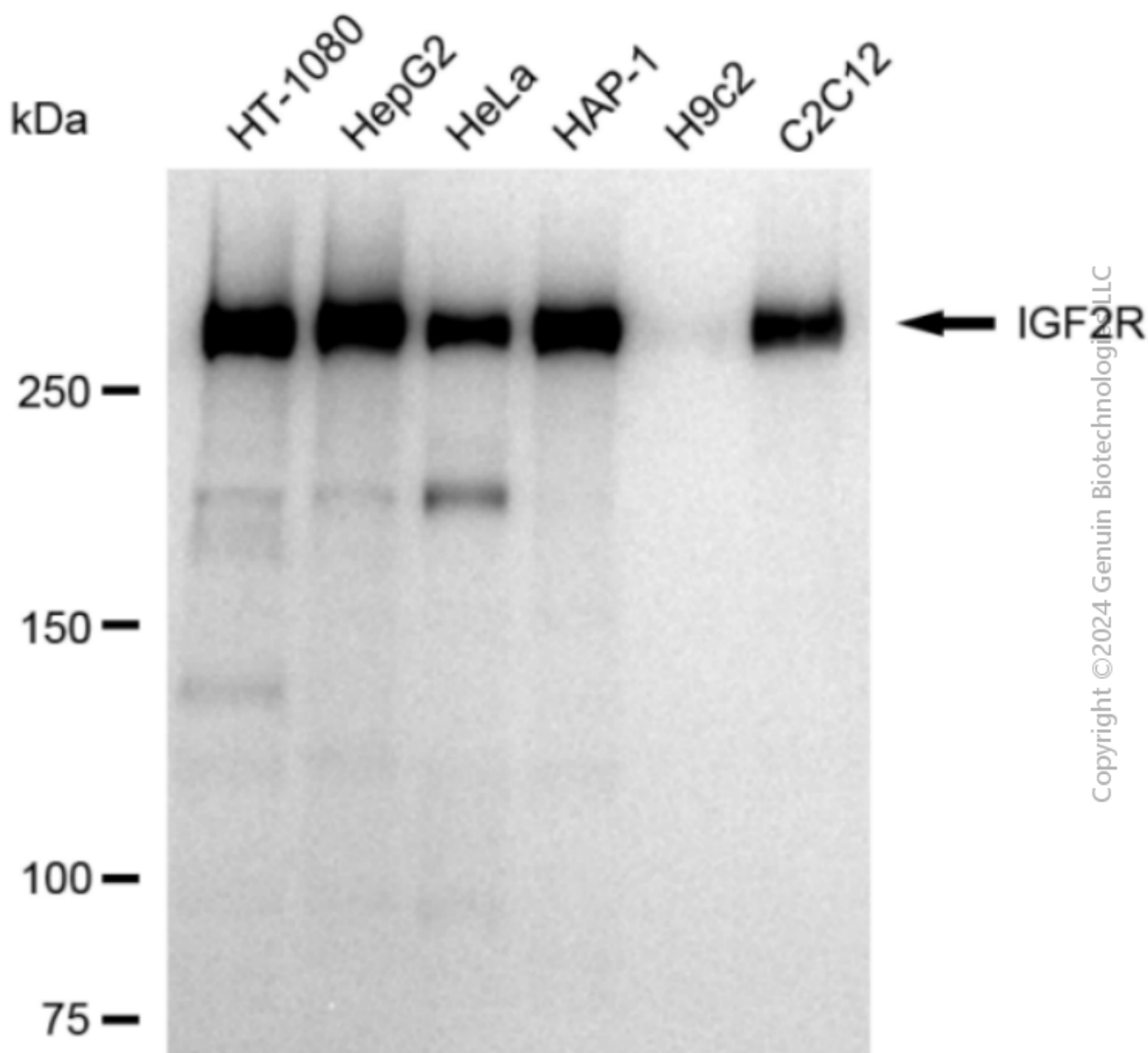
SALES@GENUINBIOTECH.COM
FAX: +1-540-855-7041

WWW.GENUINBIOTECH.COM

Anti-IGF2R Recombinant Rabbit Monoclonal Antibody

PAGE 3

Immunocytochemical staining of HepG2 cells with anti-IGF2R antibody (Cat#2119, 1:1,000) . Nuclei were stained blue with DAPI; IGF2R was stained magenta with Alexa Fluor® 647. Images were taken using Leica stellaris 5. Protein abundance based on laser Intensity and smart gain: Medium. Scale bar, 20 μ m.



Western blotting analysis using anti-IGF2R antibody (Cat#2119). Total cell lysates (30 μ g) from various cell lines were loaded and separated by SDS-PAGE. The blot was incubated with anti-IGF2R antibody (Cat#2119, 1:20,000) and HRP-conjugated goat anti-rabbit secondary antibody (Cat#201, 1:20,000) respectively. Image was developed using FeQ™ ECL Substrate Kit (Cat#226).

SUPPORT

SUPPORT@GENUINBIOTECH.COM
TEL: +1-540-855-7041

ORDERS

SALES@GENUINBIOTECH.COM
FAX: +1-540-855-7041

WWW.GENUINBIOTECH.COM