

Anti-Lamin B Receptor Recombinant Rabbit Monoclonal Antibody



Catalog #: 2121

Aliases

LBR; Lamin B Receptor; DHCR14B; TDRD18; Integral Nuclear Envelope Inner Membrane Protein; 3-Beta-Hydroxysterol Delta (14)-Reductase; Delta(14)-Sterol Reductase LBR; Tudor Domain Containing 18; C-14 Sterol Reductase; Sterol C14-Reductase; Delta-14-SR; C14SR; LMN2R; Lamin-B Receptor; EC 1.3.1.70; PHASK; PHA

Background

Gene Name: LBR

NCBI Gene Entry: [3930](#)

UniProt Entry: [Q14739](#)

Application Information

Molecular Weight: Predicted, 71 kDa; observed, 58 kDa

Clonality: Rabbit monoclonal antibody

Clone ID: 23GB6100

Species Reactivity: Human, rat

Applications Tested: Western blotting (WB), flow cytometry (FCM), immunocytochemistry (IC)

Immunogen

A synthesized peptide derived from human Lamin B Receptor

Isotype

Rabbit IgG

Storage Buffer

Supplied in PBS (pH 7.4) containing 50% glycerol, and 0.02% sodium azide.

Storage

Store at -20 °C for one year.

Recommended Dilutions

Western Blotting (WB): 1:1,000-1:5,000

Flow Cytometry (FCM): 1:2,000

Immunocytochemistry (IC): 1:100-1:1,000

SUPPORT

SUPPORT@GENUINBIOTECH.COM
TEL: +1-540-855-7041

ORDERS

SALES@GENUINBIOTECH.COM
FAX: +1-540-855-7041

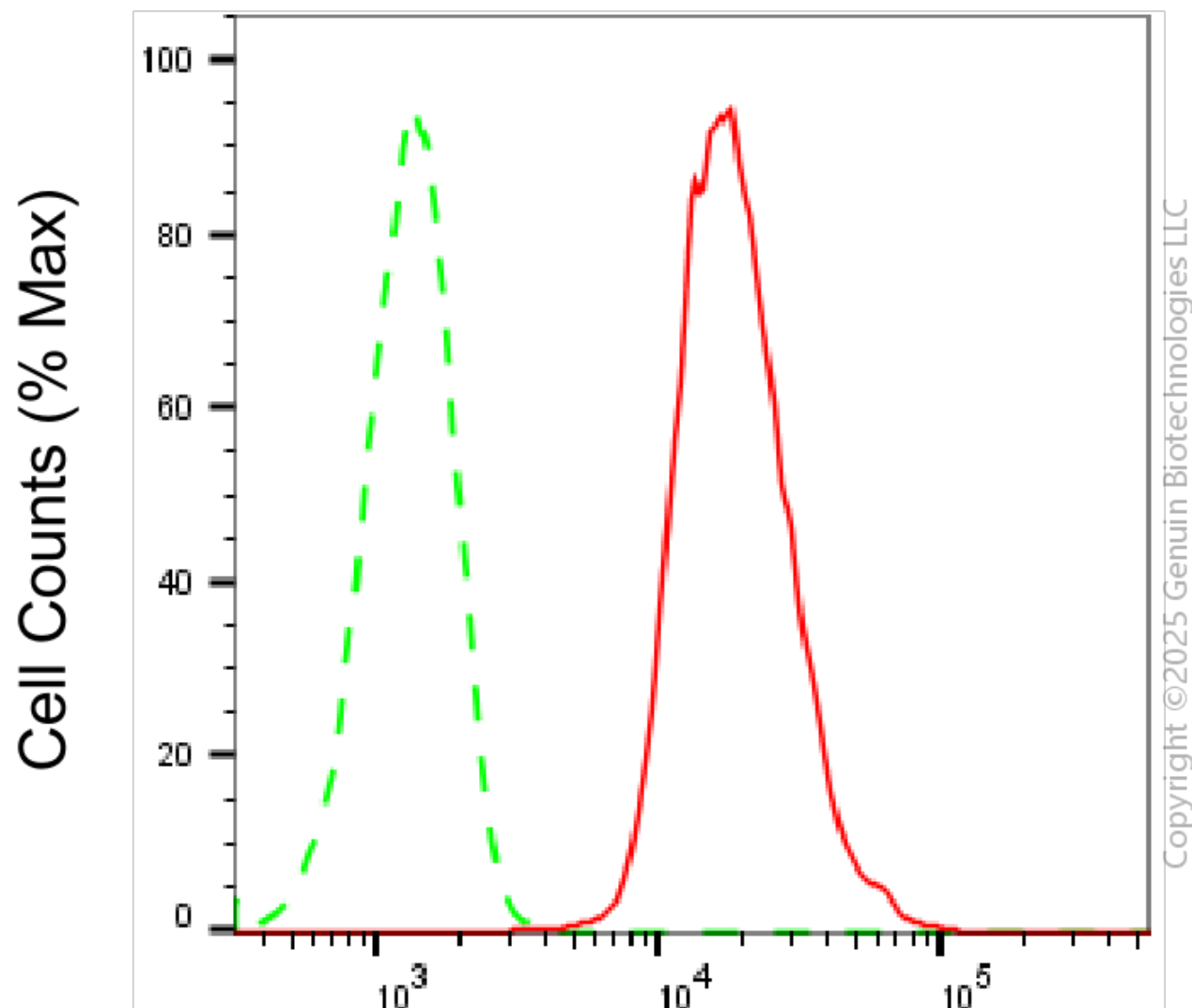
WWW.GENUINBIOTECH.COM

Anti-Lamin B Receptor Recombinant Rabbit Monoclonal Antibody

PAGE 2

Note: This product is for research use only.

Validation Data



Lamin B receptor-Alexa Fluor® 647

Flow cytometric analysis of Lamin B receptor expression in HAP-1 cells using anti-Lamin B receptor antibody (Cat#2121, 1:2,000). Green, isotype control; red, Lamin B receptor.

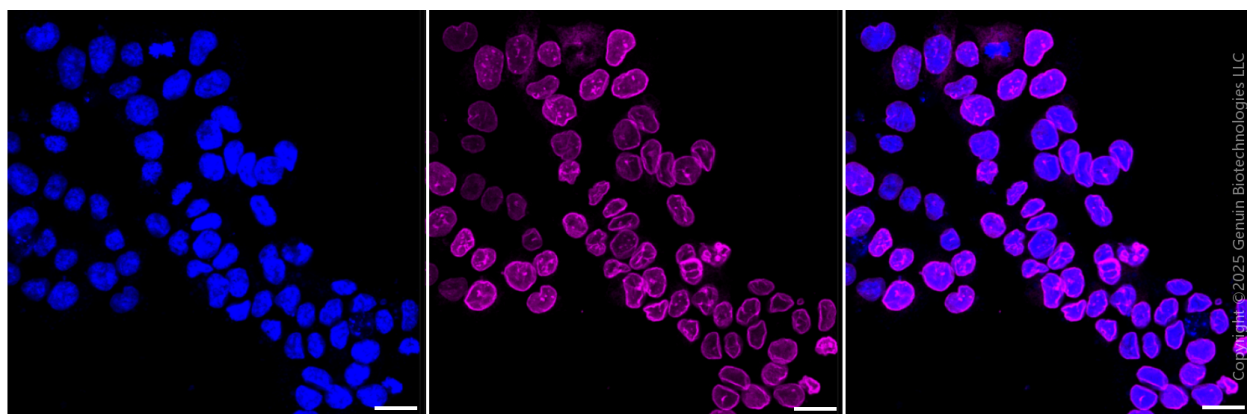
SUPPORT

SUPPORT@GENUINBIOTECH.COM
TEL: +1-540-855-7041

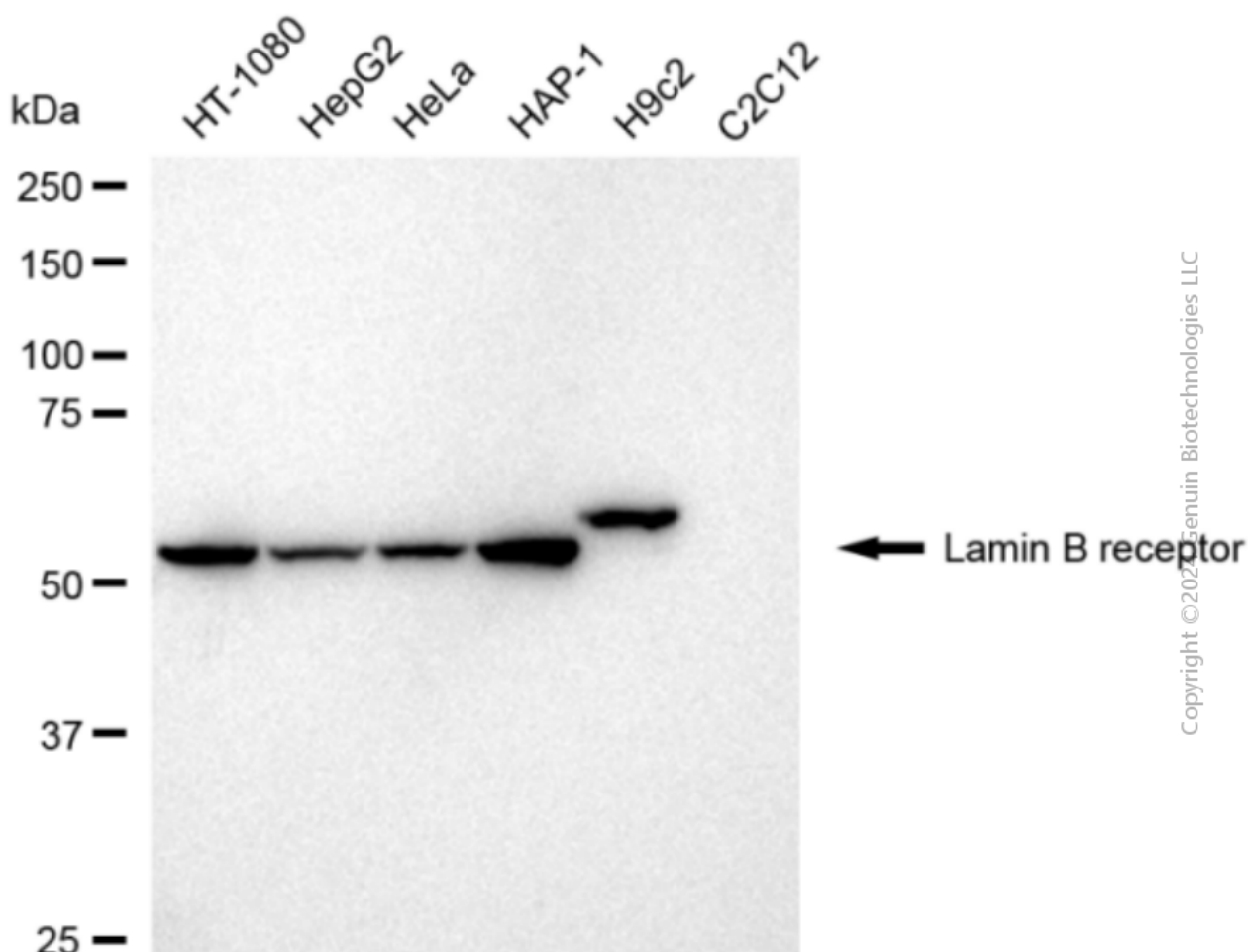
ORDERS

SALES@GENUINBIOTECH.COM
FAX: +1-540-855-7041

WWW.GENUINBIOTECH.COM



Immunocytochemical staining of HAP1 cells with anti-Lamin B receptor antibody (Cat #2121, 1:1,000). Nuclei were stained blue with DAPI; Lamin B receptor was stained magenta with Alexa Fluor® 647. Images were taken using Leica stellaris 5. Protein abundance based on laser Intensity and smart gain: High. Scale bar, 20 μ m.



Western blotting analysis using anti-Lamin B receptor antibody (Cat#2121). Total cell lysates (30 μ g) from various cell lines were loaded and separated by SDS-PAGE. The blot was incubated with anti-Lamin B receptor antibody (Cat#2121, 1:5,000) and HRP-conjugated goat anti-rabbit

Anti-Lamin B Receptor Recombinant Rabbit Monoclonal Antibody

PAGE 4

secondary antibody (Cat#201, 1:20,000) respectively. Image was developed using FeQ™ ECL Substrate Kit (Cat#226).

SUPPORT

SUPPORT@GENUINBIOTECH.COM
TEL: +1-540-855-7041

ORDERS

SALES@GENUINBIOTECH.COM
FAX: +1-540-855-7041

WWW.GENUINBIOTECH.COM