

Anti-HTRA2 Recombinant Rabbit Monoclonal Antibody



Catalog #: 2124

Aliases

HTRA2; HtrA Serine Peptidase 2; OMI; PARK13; PRSS25; High Temperature Requirement Protein A2; Serine Protease HTRA2, Mitochondrial; Omi Stress-Regulated Endoprotease; Serine Proteinase OMI; Protease, Serine, 25; Serine Protease 25; EC 3.4.21.108; Epididymis Secretory Sperm Binding Protein; HtrA-Like Serine Protease; MGCA8; HtrA2

Background

Gene Name: HTRA2

NCBI Gene Entry: [27429](#)

UniProt Entry: [O43464](#)

Application Information

Molecular Weight: Predicted, 49 kDa; observed, 36 kDa

Clonality: Rabbit monoclonal antibody

Clone ID: 23GB6110

Species Reactivity: Human, mouse, rat

Applications Tested: Western blotting (WB), flow cytometry (FCM), immunocytochemistry (IC)

Immunogen

A synthesized peptide derived from human HTRA2

Isotype

Rabbit IgG

Storage Buffer

Supplied in PBS (pH 7.4) containing 50% glycerol, and 0.02% sodium azide.

Storage

Store at -20 °C for one year.

Recommended Dilutions

Western Blotting (WB): 1:1,000-1:5,000

Flow Cytometry (FCM): 1:2,000

Immunocytochemistry (IC): 1:100-1:1,000

SUPPORT

SUPPORT@GENUINBIOTECH.COM
TEL: +1-540-855-7041

ORDERS

SALES@GENUINBIOTECH.COM
FAX: +1-540-855-7041

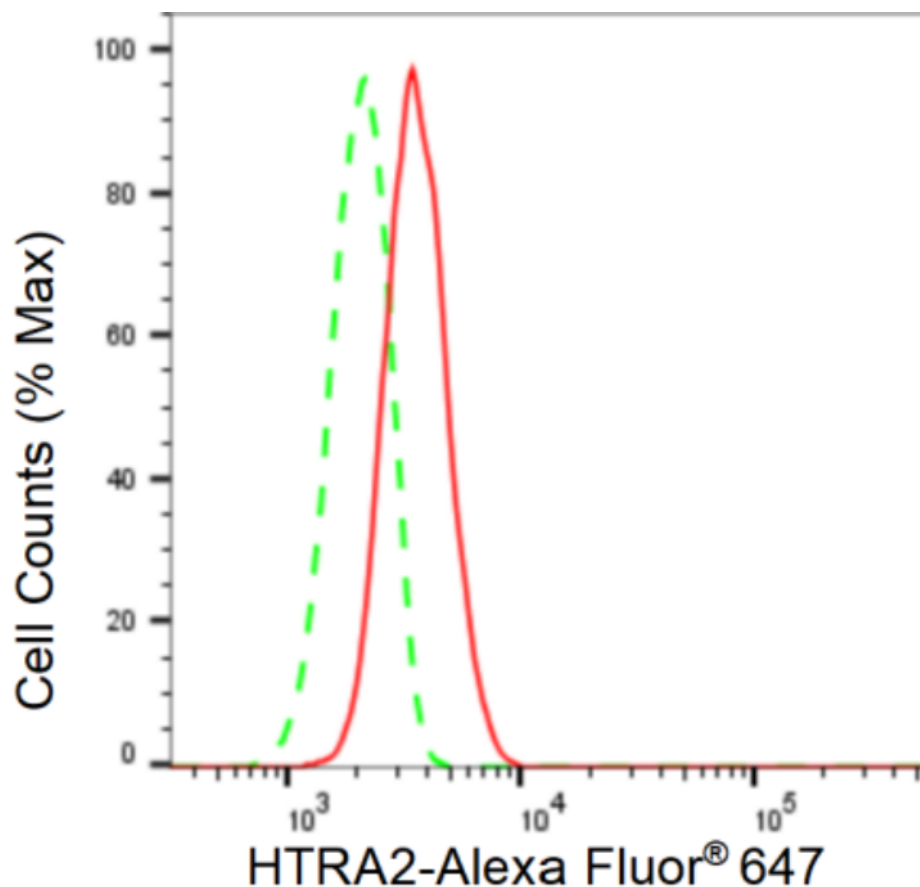
WWW.GENUINBIOTECH.COM

Anti-HTRA2 Recombinant Rabbit Monoclonal Antibody

PAGE 2

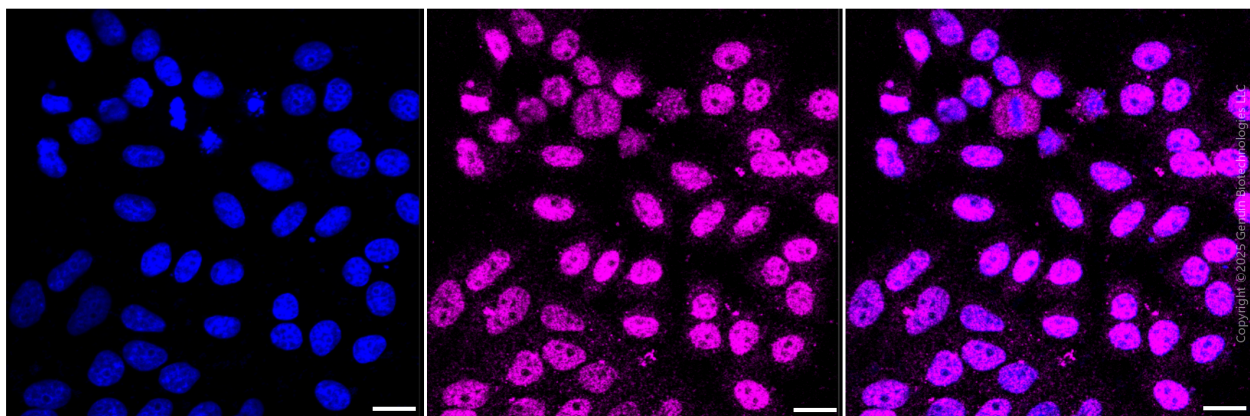
Note: This product is for research use only.

Validation Data



Copyright ©2024 Genuin Biotechnologies LLC

Flow cytometric analysis of HTRA2 expression in HepG2 cells using HTRA2 antibody (Cat#2124, 1:2,000). Green, isotype control; red, HTRA2.



Copyright ©2025 Genuin Biotechnologies LLC

Immunocytochemical staining of HepG2 cells with anti-HTRA2 antibody (Cat#2124, 1:1,000). Nuclei were stained blue with DAPI; HTRA2 was stained magenta with Alexa Fluor® 647. Images were taken using Leica stellaris 5. Protein abundance based on laser Intensity and smart

SUPPORT

SUPPORT@GENUINBIOTECH.COM
TEL: +1-540-855-7041

ORDERS

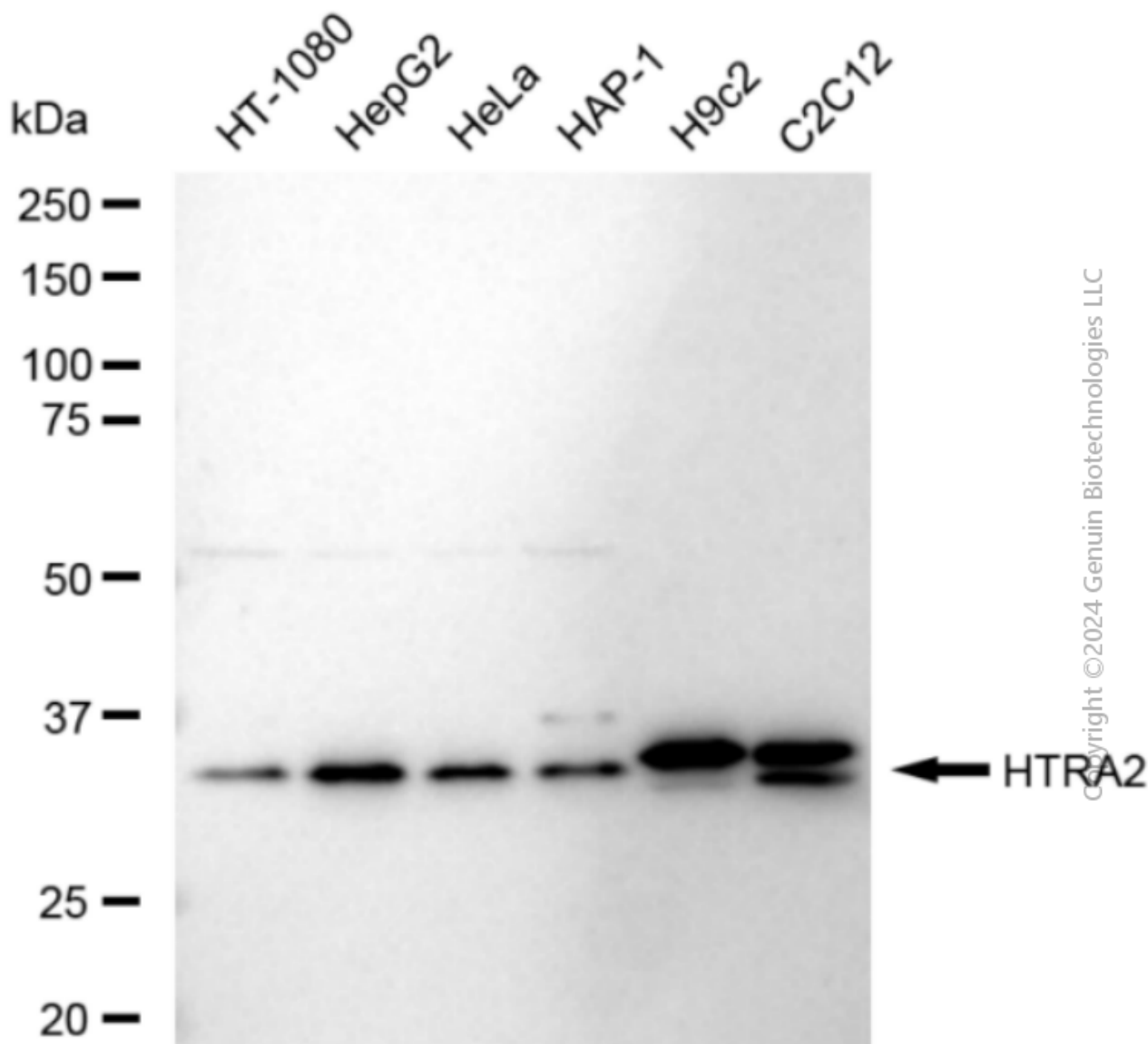
SALES@GENUINBIOTECH.COM
FAX: +1-540-855-7041

WWW.GENUINBIOTECH.COM

Anti-HTRA2 Recombinant Rabbit Monoclonal Antibody

PAGE 3

gain: Medium. Scale bar, 20 μ m.



Western blotting analysis using anti-HTRA2 antibody (Cat#2124). Total cell lysates (30 μ g) from various cell lines were loaded and separated by SDS-PAGE. The blot was incubated with anti-HTRA2 antibody (Cat#2124, 1:5,000) and HRP-conjugated goat anti-rabbit secondary antibody (Cat#201, 1:20,000) respectively. Image was developed using FeQTM ECL Substrate Kit (Cat#226).

SUPPORT

SUPPORT@GENUINBIOTECH.COM
TEL: +1-540-855-7041

ORDERS

SALES@GENUINBIOTECH.COM
FAX: +1-540-855-7041

WWW.GENUINBIOTECH.COM