

Anti-ISL1 Recombinant Rabbit Monoclonal Antibody



Catalog #: 2125

Aliases

ISL1; ISL LIM Homeobox 1; ISLET1; Insulin Gene Enhancer Protein ISL-1; Islet-1; Isl-1; ISL1 Transcription Factor, LIM/Homeodomain, (Islet-1); ISL-1

Background

Gene Name: ISL1

NCBI Gene Entry: [3670](#)

UniProt Entry: [P61371](#)

Application Information

Molecular Weight: Predicted, 39 kDa; observed, 39 kDa

Clonality: Rabbit monoclonal antibody

Clone ID: 23GB6115

Species Reactivity: Human, mouse, rat

Applications Tested: Western blotting (WB), flow cytometry (FCM), immunocytochemistry (IC)

Immunogen

A synthesized peptide derived from human Islet 1

Isotype

Rabbit IgG

Storage Buffer

Supplied in PBS (pH 7.4) containing 50% glycerol, and 0.02% sodium azide.

Storage

Store at -20 °C for one year.

Recommended Dilutions

Western Blotting (WB): 1:1,000-1:5,000

Flow Cytometry (FCM): 1:2,000

Immunocytochemistry (IC): 1:100-1:1,000

Note: This product is for research use only.

Validation Data

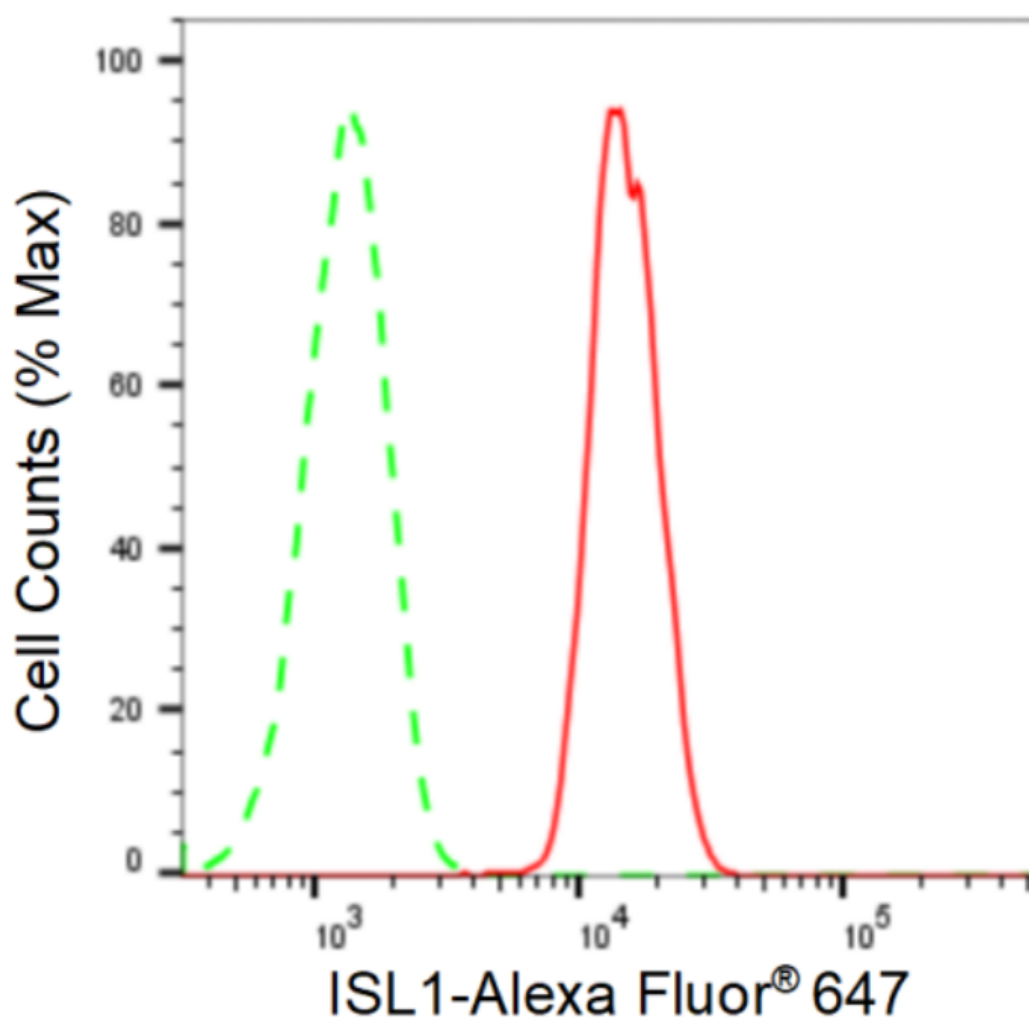
SUPPORT

SUPPORT@GENUINBIOTECH.COM
TEL: +1-540-855-7041

ORDERS

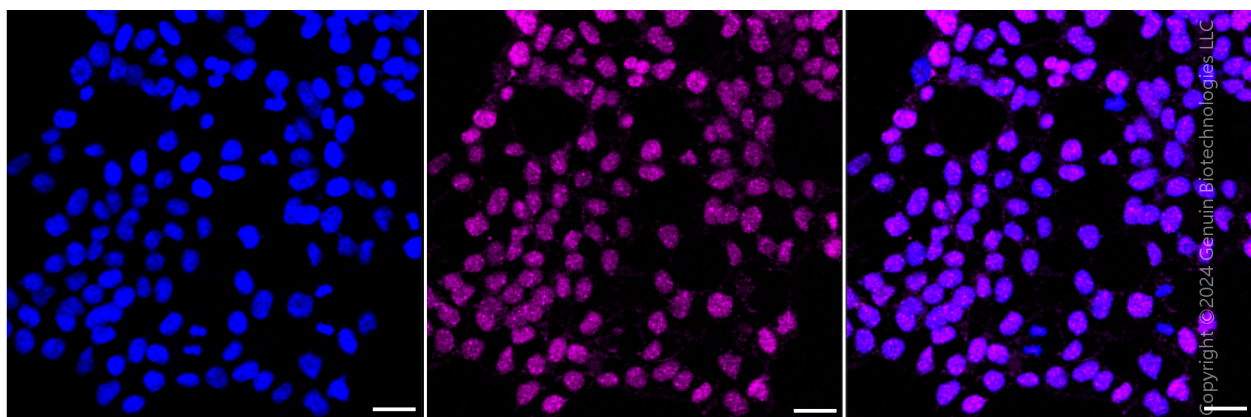
SALES@GENUINBIOTECH.COM
FAX: +1-540-855-7041

WWW.GENUINBIOTECH.COM



Copyright © 2024 Genuin Biotechnologies LLC

Flow cytometric analysis of ISL1 expression in HAP-1 cells using anti-ISL1 antibody (Cat#2125, 1:2,000). Green, isotype control; red, ISL1.



Copyright © 2024 Genuin Biotechnologies LLC

Immunocytochemical staining of HAP1 cells with anti-ISL1 antibody (Cat#2125, 1:1,000). Nuclei were stained blue with DAPI; ISL1 was stained magenta with Alexa Fluor® 647. Images were taken using Leica stellaris 5. Protein abundance based on laser Intensity and smart gain: Medium.

SUPPORT

SUPPORT@GENUINBIOTECH.COM
TEL: +1-540-855-7041

ORDERS

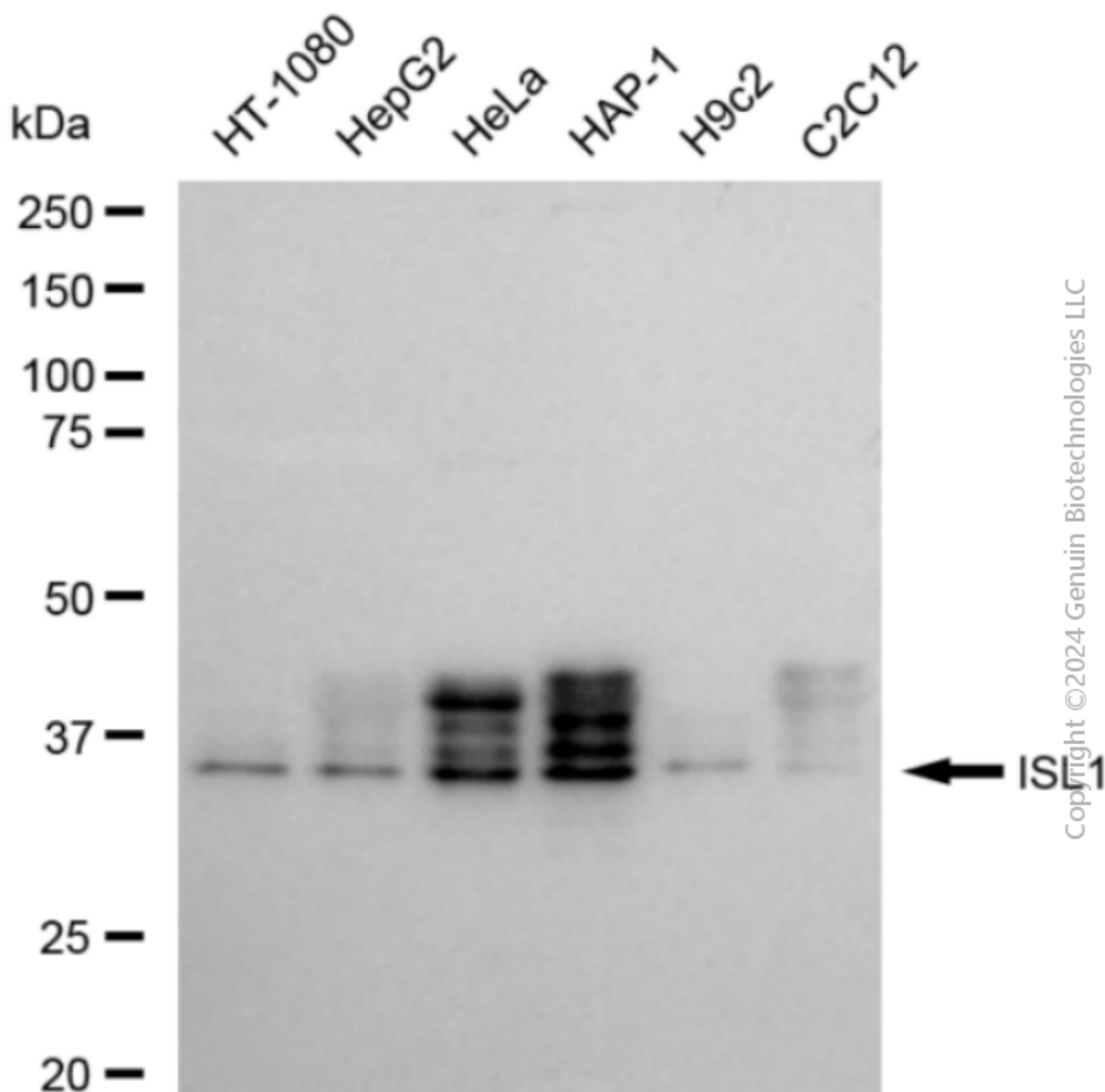
SALES@GENUINBIOTECH.COM
FAX: +1-540-855-7041

WWW.GENUINBIOTECH.COM

Anti-ISL1 Recombinant Rabbit Monoclonal Antibody

PAGE 3

Scale bar: 20 μ m.



Western blotting analysis using anti-ISL1 antibody (Cat#2125). Total cell lysates (30 μ g) from various cell lines were loaded and separated by SDS-PAGE. The blot was incubated with anti-ISL1 antibody (Cat#2125, 1:5,000) and HRP-conjugated goat anti-rabbit secondary antibody (Cat#201, 1:20,000) respectively. Image was developed using FeQ™ ECL Substrate Kit (Cat#226).

SUPPORT

SUPPORT@GENUINBIOTECH.COM
TEL: +1-540-855-7041

ORDERS

SALES@GENUINBIOTECH.COM
FAX: +1-540-855-7041

WWW.GENUINBIOTECH.COM