

Anti-Keratin 1 Recombinant Rabbit Monoclonal Antibody



Catalog #: 2129

Aliases

KRT1; Keratin 1; KRT1A; Keratin, Type II Cytoskeletal 1; Epidermolytic Hyperkeratosis 1; Type-II Keratin Kb1; Keratin 1, Type II; 67 KDa Cytokeratin; Hair Alpha Protein; EHK1; CK-1; K1; Cytokeratin 1; Cytokeratin-1; Keratin-1; NEPPK; AEI2; EPPK; KRTA; CK1; EHK

Background

Gene Name: KRT1

NCBI Gene Entry: [3848](#)

UniProt Entry: [P04264](#)

Application Information

Molecular Weight: Predicted, 66 kDa; observed, 52 kDa

Clonality: Rabbit monoclonal antibody

Clone ID: 23GB6135

Species Reactivity: Human, mouse, rat

Applications Tested: Western blotting (WB), flow cytometry (FCM), immunocytochemistry (IC)

Immunogen

A synthesized peptide derived from human Cytokeratin 1

Isotype

Rabbit IgG

Storage Buffer

Supplied in PBS (pH 7.4) containing 50% glycerol, and 0.02% sodium azide.

Storage

Store at -20 °C for one year.

Recommended Dilutions

Western Blotting (WB): 1:1,000-1:20,000

Flow Cytometry (FCM): 1:2,000

Immunocytochemistry (IC): 1:100-1:1,000

Note: This product is for research use only.

SUPPORT

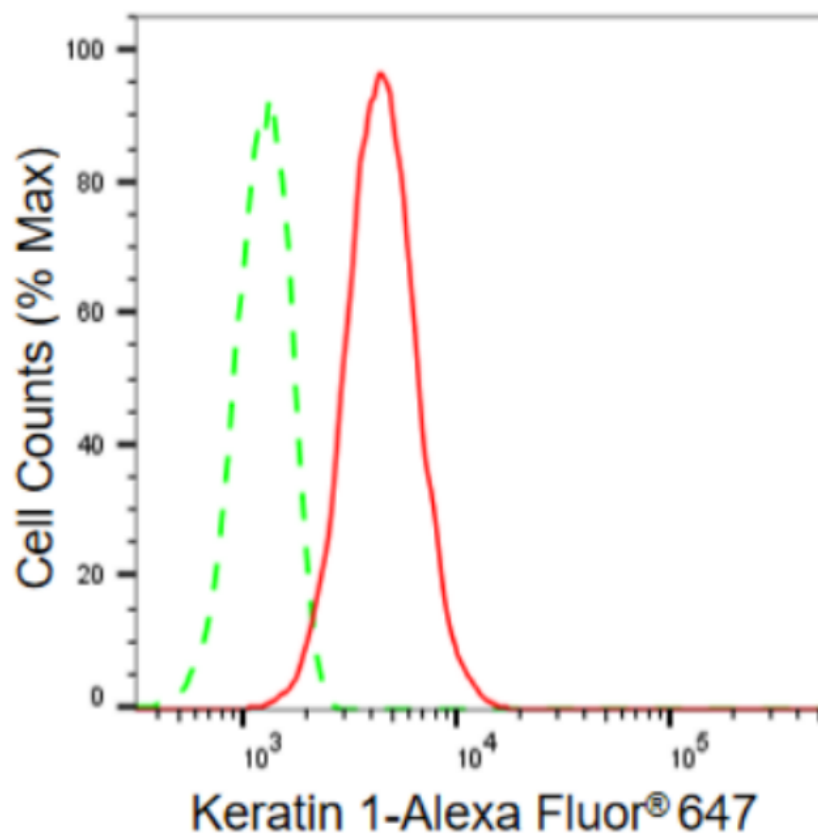
SUPPORT@GENUINBIOTECH.COM
TEL: +1-540-855-7041

ORDERS

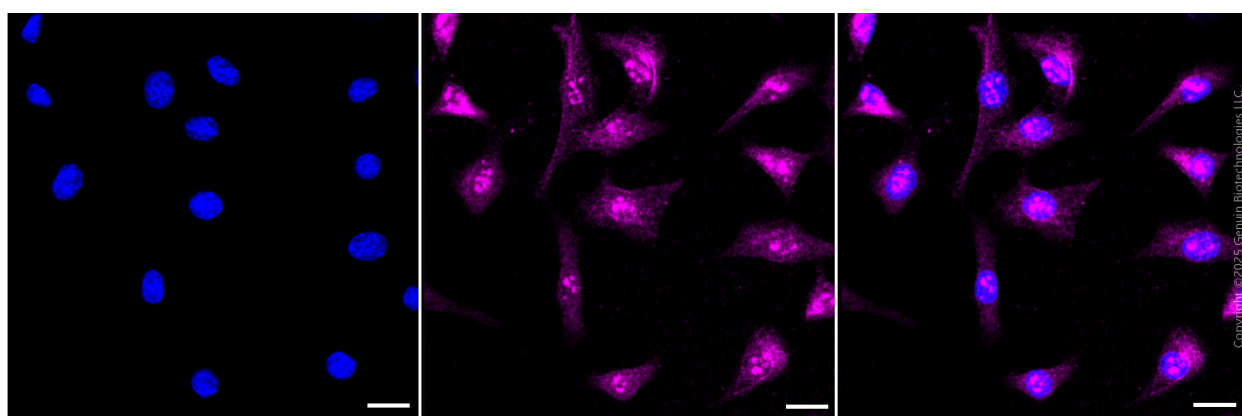
SALES@GENUINBIOTECH.COM
FAX: +1-540-855-7041

WWW.GENUINBIOTECH.COM

Validation Data



Flow cytometric analysis of Keratin 1 expression in C2C12 cells using Keratin 1 antibody (Cat#2129, 1:2,000). Green, isotype control; red, Keratin 1.



Immunocytochemical staining of C2C12 cells with anti-Keratin 1 antibody (Cat #2129, 1:1,000) . Nuclei were stained blue with DAPI; Keratin 1 was stained magenta with Alexa Fluor® 647. Images were taken using Leica stellaris 5. Protein abundance based on laser Intensity and smart gain: Medium. Scale bar, 20 μ m.

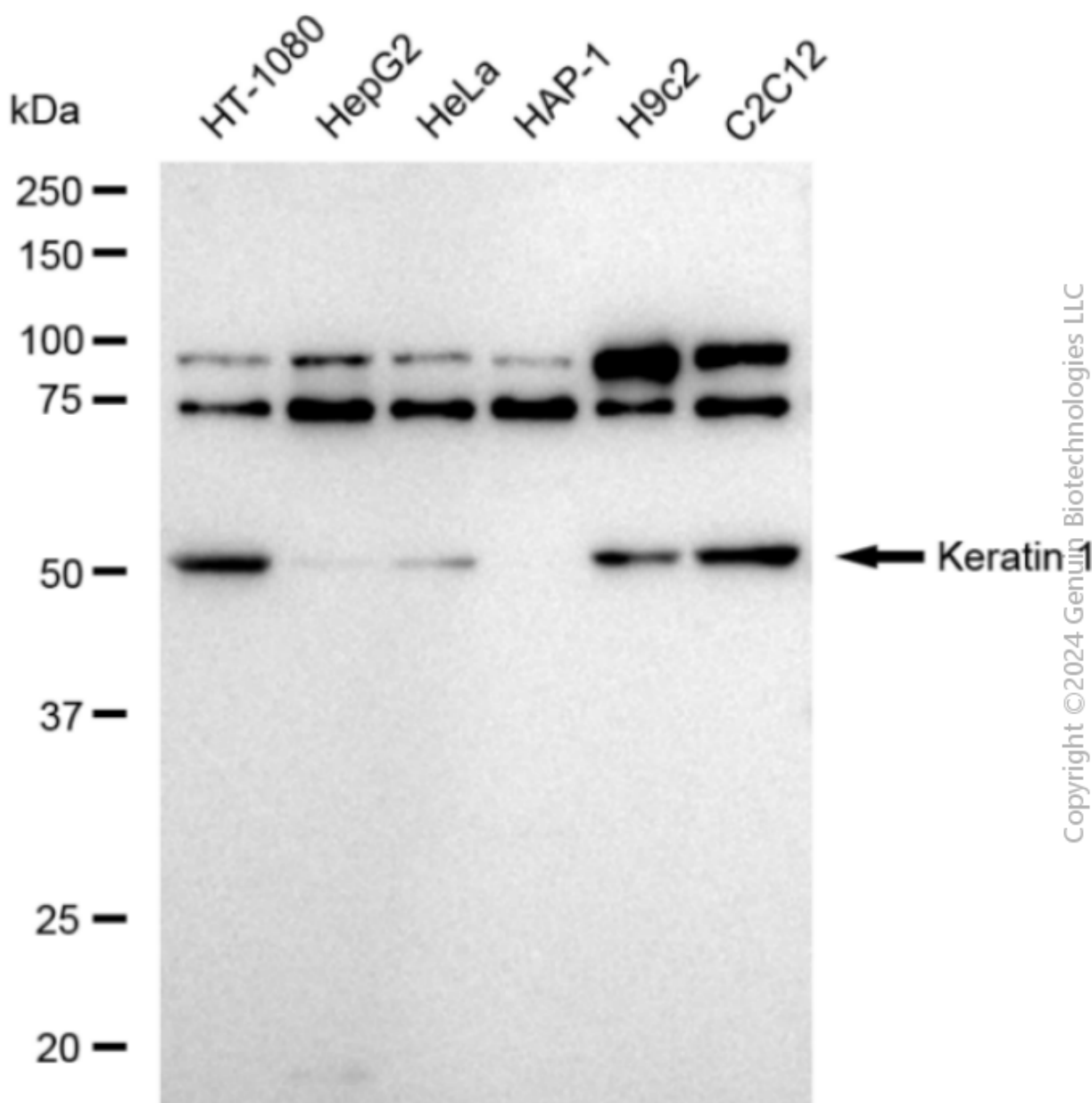
SUPPORT

SUPPORT@GENUINBIOTECH.COM
TEL: +1-540-855-7041

ORDERS

SALES@GENUINBIOTECH.COM
FAX: +1-540-855-7041

WWW.GENUINBIOTECH.COM



Western blotting analysis using anti-Keratin 1 antibody (Cat#2129). Total cell lysates (30 μ g) from various cell lines were loaded and separated by SDS-PAGE. The blot was incubated with anti-Keratin 1 antibody (Cat#2129, 1:20,000) and HRP-conjugated goat anti-rabbit secondary antibody (Cat#201, 1:20,000) respectively. Image was developed using FeQ™ ECL Substrate Kit (Cat#226).