

# Anti-Interleukin 1 receptor antagonist Recombinant Rabbit Monoclonal Antibody



## Catalog #: 2131

### Aliases

IL1RN; Interleukin 1 Receptor Antagonist; ICIL-1RA; IL-1RN; IL1RA; IL1F3; IRAP; Interleukin-1 Receptor Antagonist Protein; IL1 Inhibitor; MGC10430; IL-1ra; Intracellular Interleukin-1 Receptor Antagonist (IcIL-1ra); Intracellular Interleukin-1 Receptor Antagonist; Intracellular IL-1 Receptor Antagonist Type II; Type II Interleukin-1 Receptor Antagonist; Anakinra; IL-1ra3; CRMO2; MVCD4; DIRA

### Background

Gene Name: IL1RN

NCBI Gene Entry: [3557](#)

UniProt Entry: [P18510](#)

### Application Information

Molecular Weight: Predicted, 20 kDa; observed, 20 kDa

Clonality: Rabbit monoclonal antibody

Clone ID: 23GB6145

Species Reactivity: Human, mouse, rat

Applications Tested: Western blotting (WB), flow cytometry (FCM), immunocytochemistry (IC)

### Immunogen

A synthesized peptide derived from human IL1RA

### Isotype

Rabbit IgG

### Storage Buffer

Supplied in PBS (pH 7.4) containing 50% glycerol, and 0.02% sodium azide.

### Storage

Store at -20 °C for one year.

### Recommended Dilutions

Western Blotting (WB): 1:1,000-1:5,000

Flow Cytometry (FCM): 1:2,000

Immunocytochemistry (IC): 1:100-1:1,000

---

#### SUPPORT

SUPPORT@GENUINBIOTECH.COM  
TEL: +1-540-855-7041

#### ORDERS

SALES@GENUINBIOTECH.COM  
FAX: +1-540-855-7041

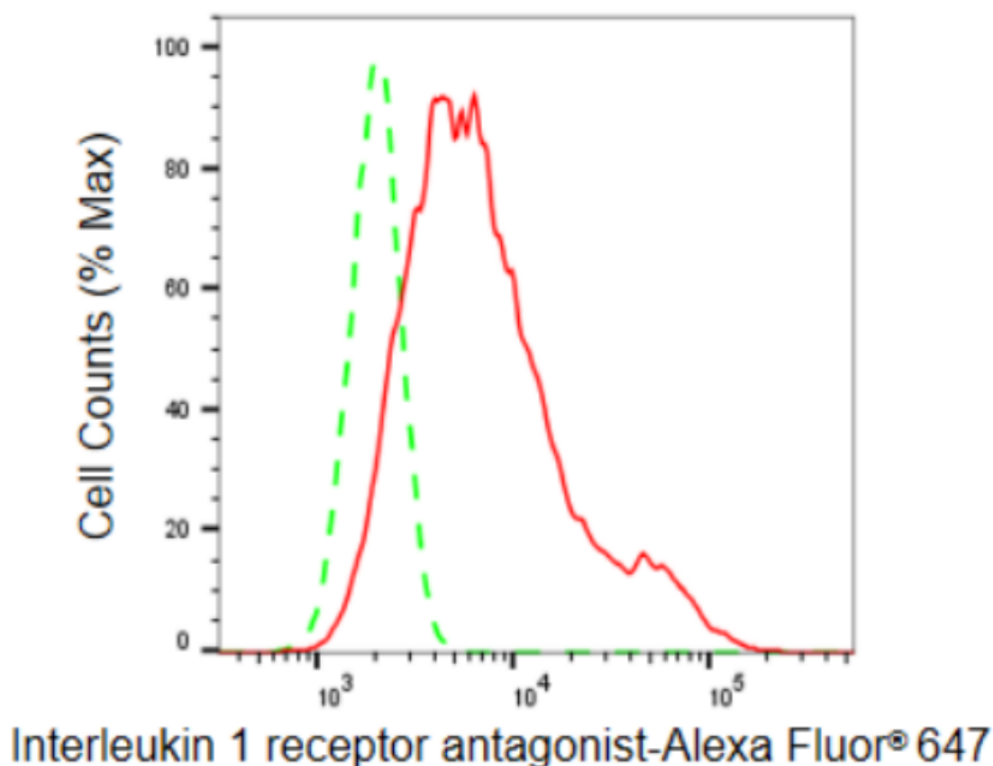
[WWW.GENUINBIOTECH.COM](http://WWW.GENUINBIOTECH.COM)

# Anti-Interleukin 1 receptor antagonist Recombinant Rabbit Monoclonal Antibody

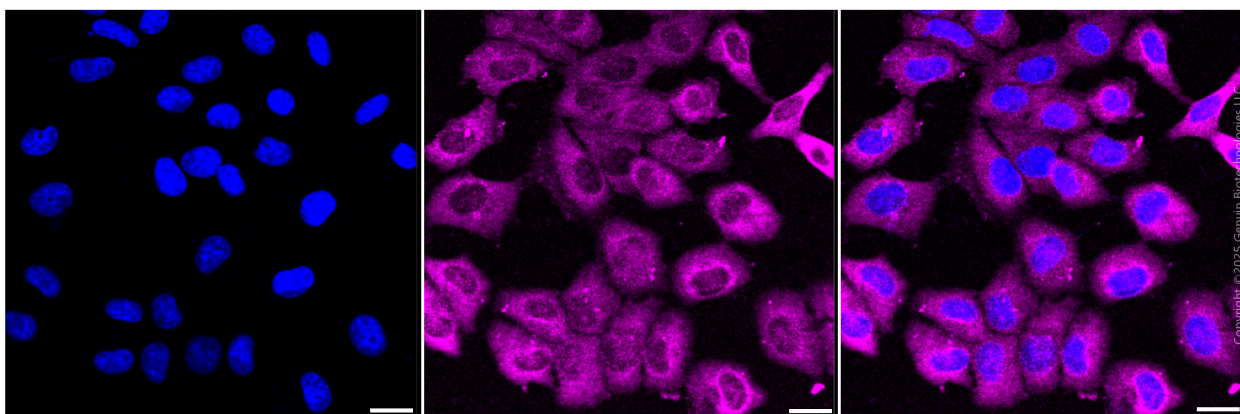
PAGE 2

**Note:** This product is for research use only.

## Validation Data



Flow cytometric analysis of Interleukin 1 receptor antagonist expression in HepG2 cells using Interleukin 1 receptor antagonist antibody (Cat#2131, 1:2,000). Green, isotype control; red, Interleukin 1 receptor antagonist.



Immunocytochemical staining of HepG2 cells with anti-Interleukin 1 receptor antagonist antibody (Cat#2131, 1:1,000). Nuclei were stained blue with DAPI; Interleukin 1 receptor antagonist was stained magenta with Alexa Fluor® 647. Images were taken using Leica stellaris 5. Protein

### SUPPORT

SUPPORT@GENUINBIOTECH.COM  
TEL: +1-540-855-7041

### ORDERS

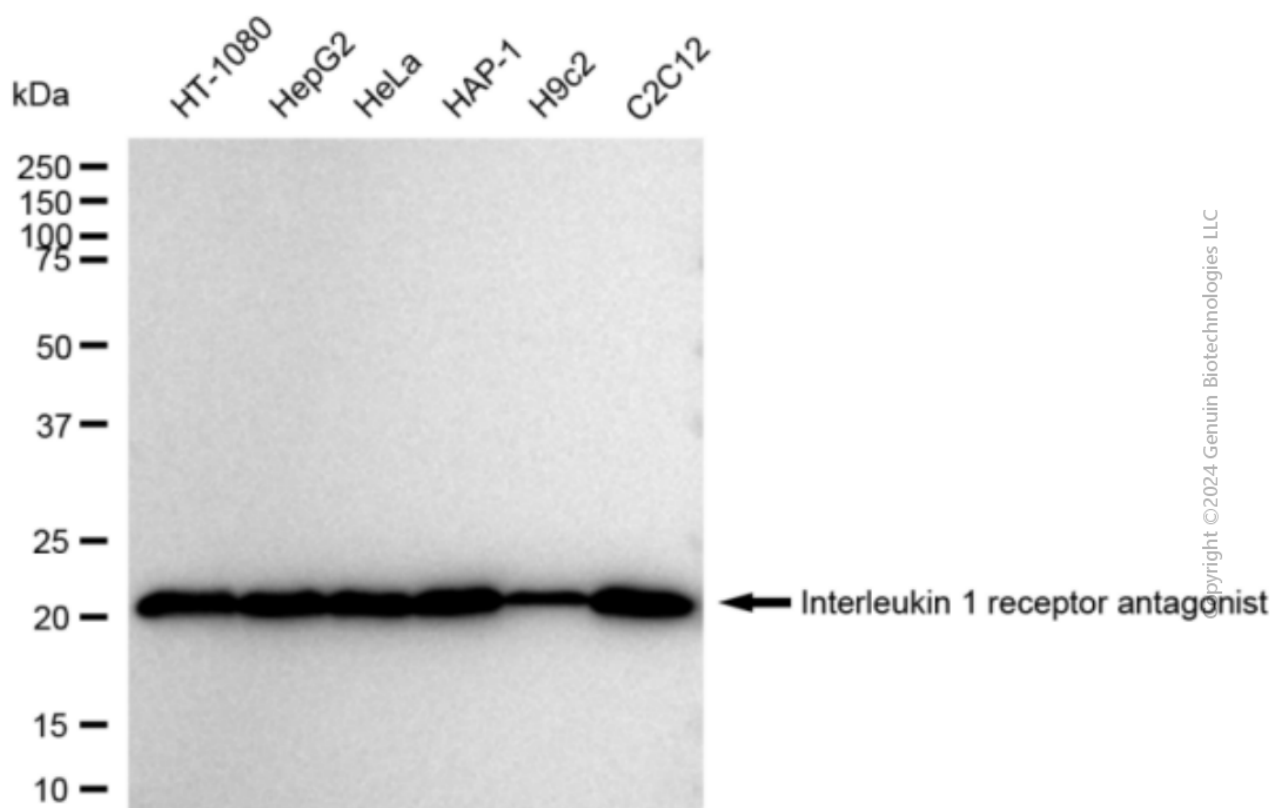
SALES@GENUINBIOTECH.COM  
FAX: +1-540-855-7041

WWW.GENUINBIOTECH.COM

## Anti-Interleukin 1 receptor antagonist Recombinant Rabbit Monoclonal Antibody

PAGE 3

abundance based on laser Intensity and smart gain: Medium. Scale bar, 20  $\mu$ m.



Western blotting analysis using anti-Interleukin 1 receptor antagonist antibody (Cat#2131). Total cell lysates (30  $\mu$ g) from various cell lines were loaded and separated by SDS-PAGE. The blot was incubated with anti-Interleukin 1 receptor antagonist antibody (Cat#2131, 1:20,000) and HRP-conjugated goat anti-rabbit secondary antibody (Cat#201, 1:20,000) respectively. Image was developed using FeQ™ ECL Substrate Kit (Cat#226).

### SUPPORT

SUPPORT@GENUINBIOTECH.COM  
TEL: +1-540-855-7041

### ORDERS

SALES@GENUINBIOTECH.COM  
FAX: +1-540-855-7041

[WWW.GENUINBIOTECH.COM](http://WWW.GENUINBIOTECH.COM)