

Anti-Insulin receptor substrate 1 Recombinant Rabbit Monoclonal Antibody



Catalog #: 2133

Aliases

IRS1; Insulin Receptor Substrate 1; HIRS-1; IRS-1

Background

Gene Name: IRS1

NCBI Gene Entry: [3667](#)

UniProt Entry: [P35568](#)

Application Information

Molecular Weight: Predicted, 132 kDa; observed, 170 kDa

Clonality: Rabbit monoclonal antibody

Clone ID: 23GB6155

Species Reactivity: Human

Applications Tested: Western blotting (WB), flow cytometry (FCM), immunocytochemistry (IC)

Immunogen

A synthesized peptide derived from human IRS1

Isotype

Rabbit IgG

Storage Buffer

Supplied in PBS (pH 7.4) containing 50% glycerol, and 0.02% sodium azide.

Storage

Store at -20 °C for one year.

Recommended Dilutions

Western Blotting (WB): 1:1,000-1:5,000

Flow Cytometry (FCM): 1:2,000

Immunocytochemistry (IC): 1:100-1:1,000

Note: This product is for research use only.

Validation Data

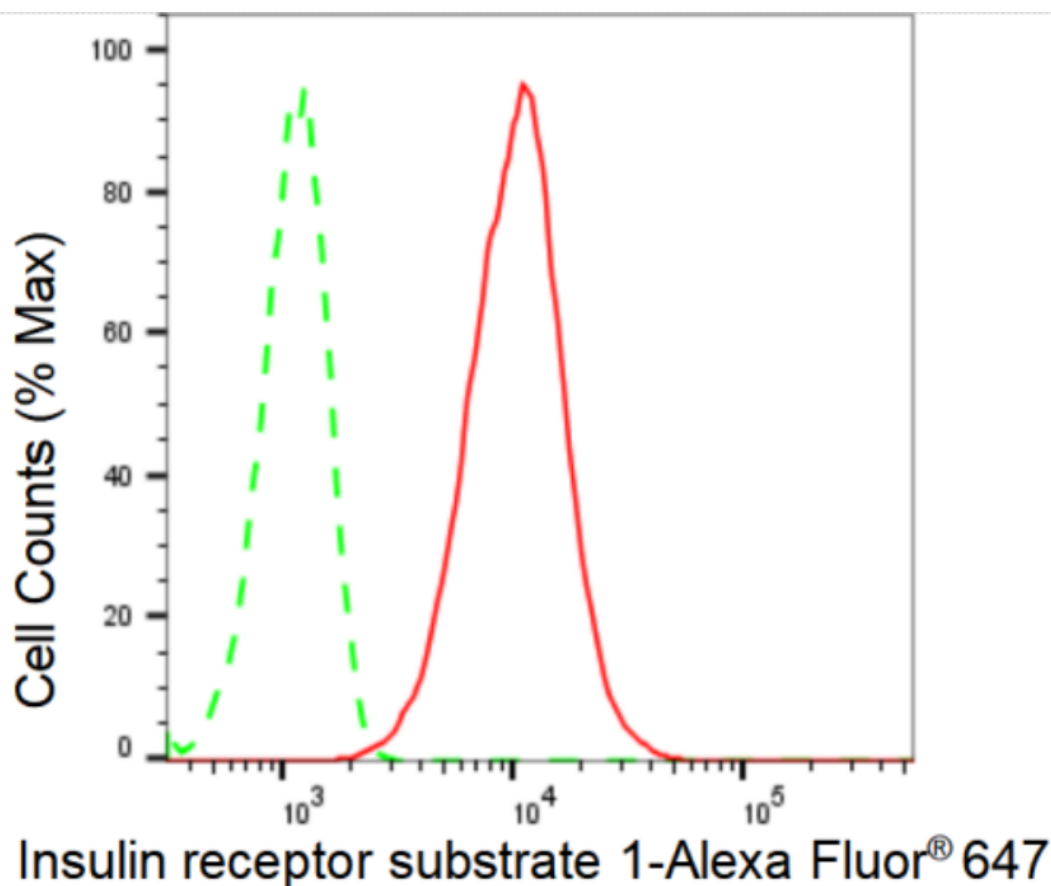
SUPPORT

SUPPORT@GENUINBIOTECH.COM
TEL: +1-540-855-7041

ORDERS

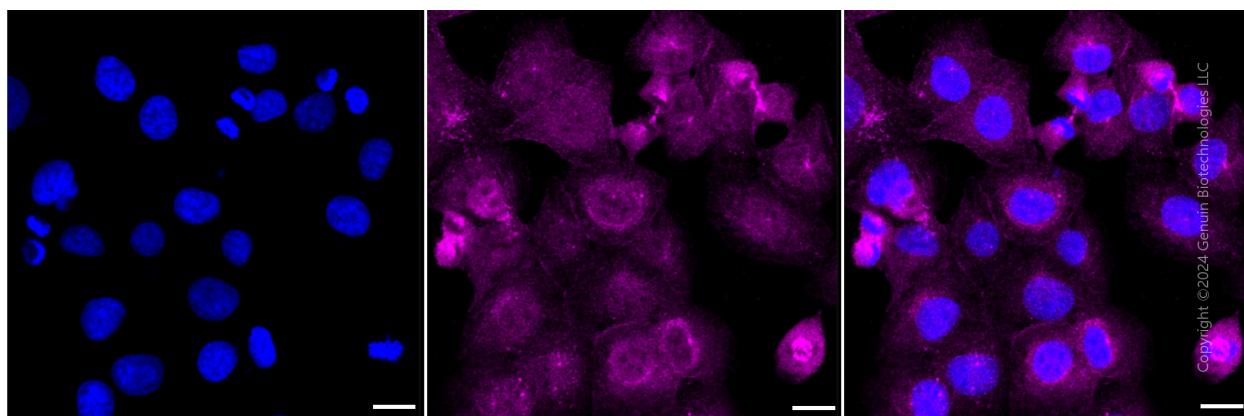
SALES@GENUINBIOTECH.COM
FAX: +1-540-855-7041

WWW.GENUINBIOTECH.COM



Copyright ©2024 Genuin Biotechnologies LLC

Flow cytometric analysis of Insulin receptor substrate 1 expression in HT-1080 cells using Insulin receptor substrate 1 antibody (Cat#2133, 1:2,000). Green, isotype control; red, Insulin receptor substrate 1.



Immunocytochemical staining of HT-1080 cells with anti-Insulin receptor substrate 1 antibody (Cat#2133, 1:1,000). Nuclei were stained blue with DAPI; Insulin receptor substrate 1 was stained magenta with Alexa Fluor® 647. Images were taken using Leica stellaris 5. Protein abundance based on laser Intensity and smart gain: Medium. Scale bar: 20 μ m.

SUPPORT

SUPPORT@GENUINBIOTECH.COM
TEL: +1-540-855-7041

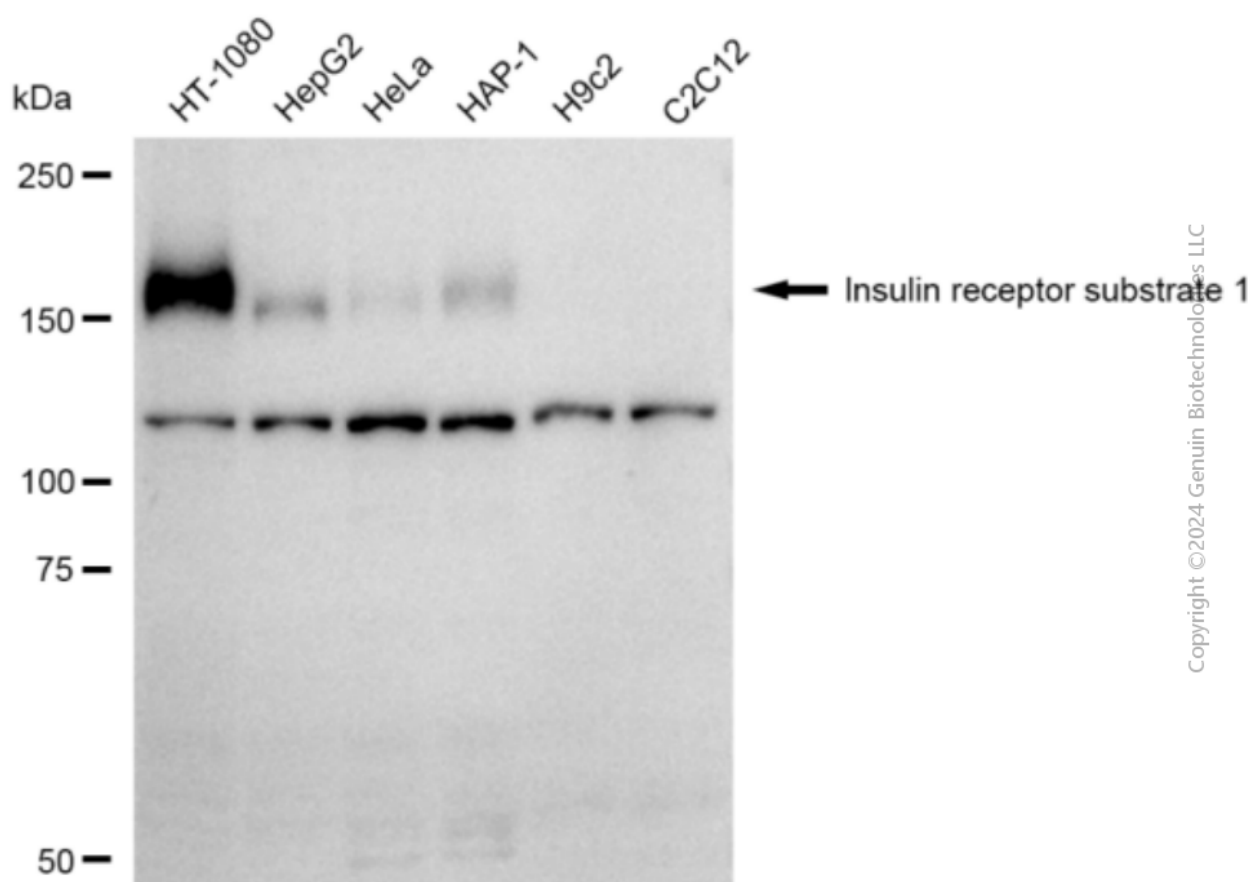
ORDERS

SALES@GENUINBIOTECH.COM
FAX: +1-540-855-7041

WWW.GENUINBIOTECH.COM

Anti-Insulin receptor substrate 1 Recombinant Rabbit Monoclonal Antibody

PAGE 3



Western blotting analysis using anti-Insulin receptor substrate 1 antibody (Cat#2133). Total cell lysates (30 μ g) from various cell lines were loaded and separated by SDS-PAGE. The blot was incubated with anti-Insulin receptor substrate 1 antibody (Cat#2133, 1:5,000) and HRP-conjugated goat anti-rabbit secondary antibody (Cat#201, 1:20,000) respectively. Image was developed using FeQ™ ECL Substrate Kit (Cat#226).

SUPPORT

SUPPORT@GENUINBIOTECH.COM
TEL: +1-540-855-7041

ORDERS

SALES@GENUINBIOTECH.COM
FAX: +1-540-855-7041

WWW.GENUINBIOTECH.COM