

Anti-Histone deacetylase 8 Recombinant Rabbit Monoclonal Antibody



Catalog #: 2139

Aliases

HDAC8; Histone Deacetylase 8; HDACL1; KDAC8; RPD3; Protein Deacetylase HDAC8; Histone Deacetylase-Like 1; Protein Deacetylase HDAC8; MRXS6; HD8; WTS; Wilson-Turner X-Linked Mental Retardation Syndrome; EC 3.5.1.98; EC 3.5.1.-; CDA07; CDLS5

Background

Gene Name: HDAC8

NCBI Gene Entry: [55869](#)

UniProt Entry: [Q9BY41](#)

Application Information

Molecular Weight: Predicted, 42 kDa; observed, 42 kDa

Clonality: Rabbit monoclonal antibody

Clone ID: 23GB6185

Species Reactivity: Human, mouse, rat

Applications Tested: Western blotting (WB), flow cytometry (FCM), immunocytochemistry (IC)

Immunogen

A synthesized peptide derived from human HDAC8

Isotype

Rabbit IgG

Storage Buffer

Supplied in PBS (pH 7.4) containing 50% glycerol, and 0.02% sodium azide.

Storage

Store at -20 °C for one year.

Recommended Dilutions

Western Blotting (WB): 1:1,000-1:5,000

Flow Cytometry (FCM): 1:2,000

Immunocytochemistry (IC): 1:100-1:1,000

Note: This product is for research use only.

SUPPORT

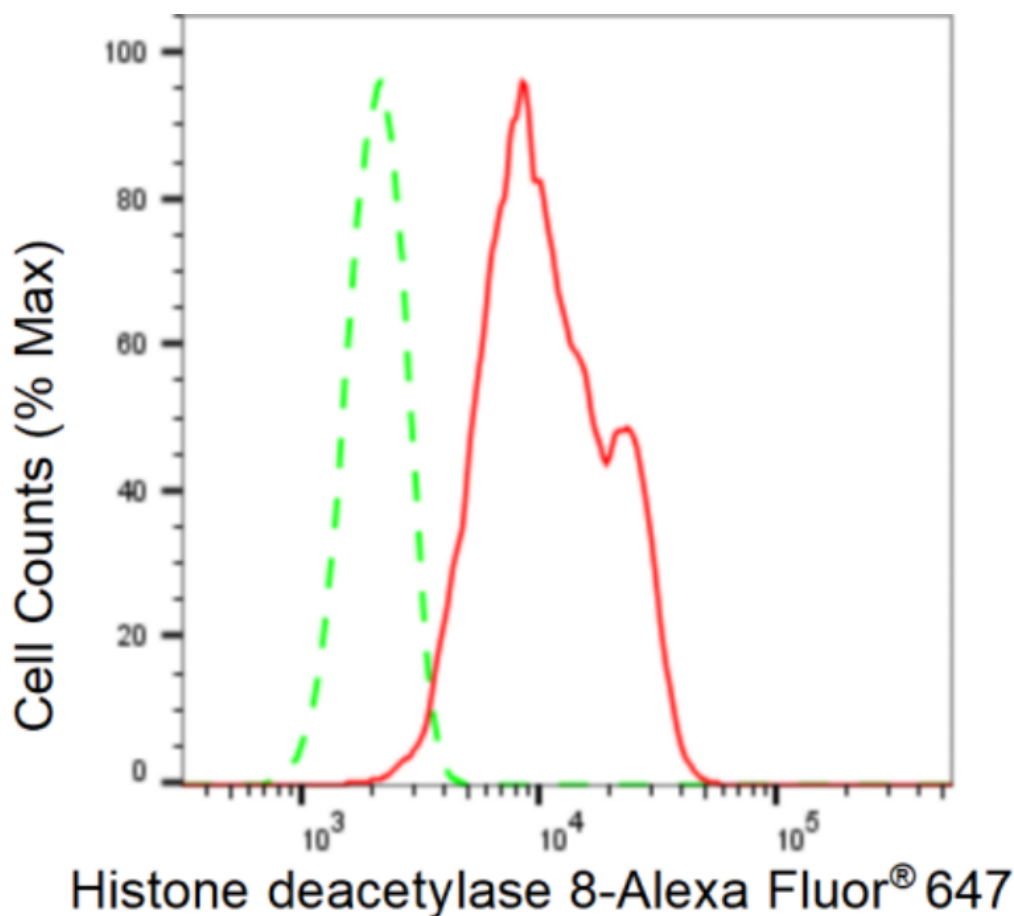
SUPPORT@GENUINBIOTECH.COM
TEL: +1-540-855-7041

ORDERS

SALES@GENUINBIOTECH.COM
FAX: +1-540-855-7041

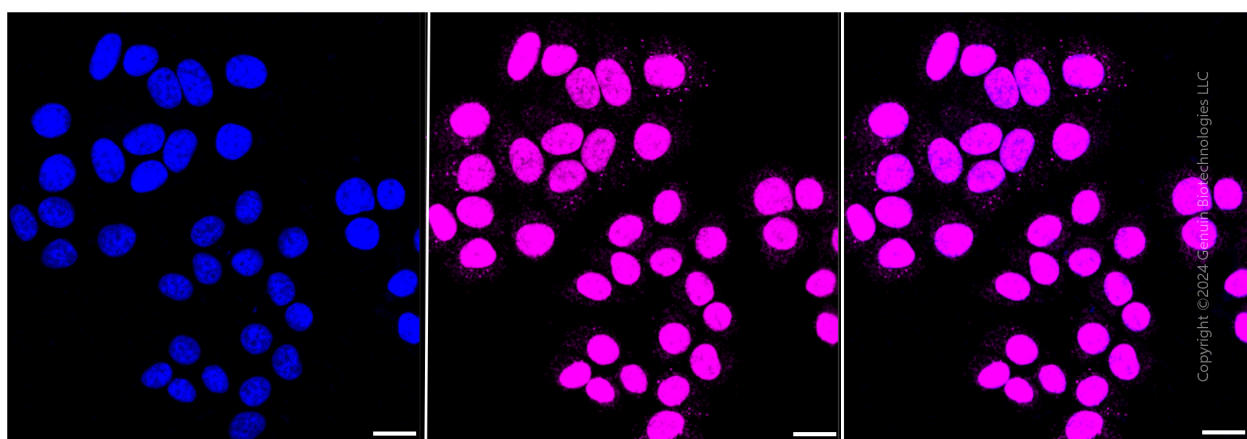
WWW.GENUINBIOTECH.COM

Validation Data



Copyright ©2024 Genuin Biotechnologies LLC

Flow cytometric analysis of Histone deacetylase 8 expression in HepG2 cells using Histone deacetylase 8 antibody (Cat#2139, 1:2,000). Green, isotype control; red, Histone deacetylase 8.



Immunocytochemical staining of HepG2 cells with anti-Histone deacetylase 8 antibody (Cat#2139, 1:1,000). Nuclei were stained blue with DAPI; Histone deacetylase 8 was stained magenta with Alexa Fluor® 647. Images were taken using Leica stellaris 5. Protein abundance

SUPPORT

SUPPORT@GENUINBIOTECH.COM
TEL: +1-540-855-7041

ORDERS

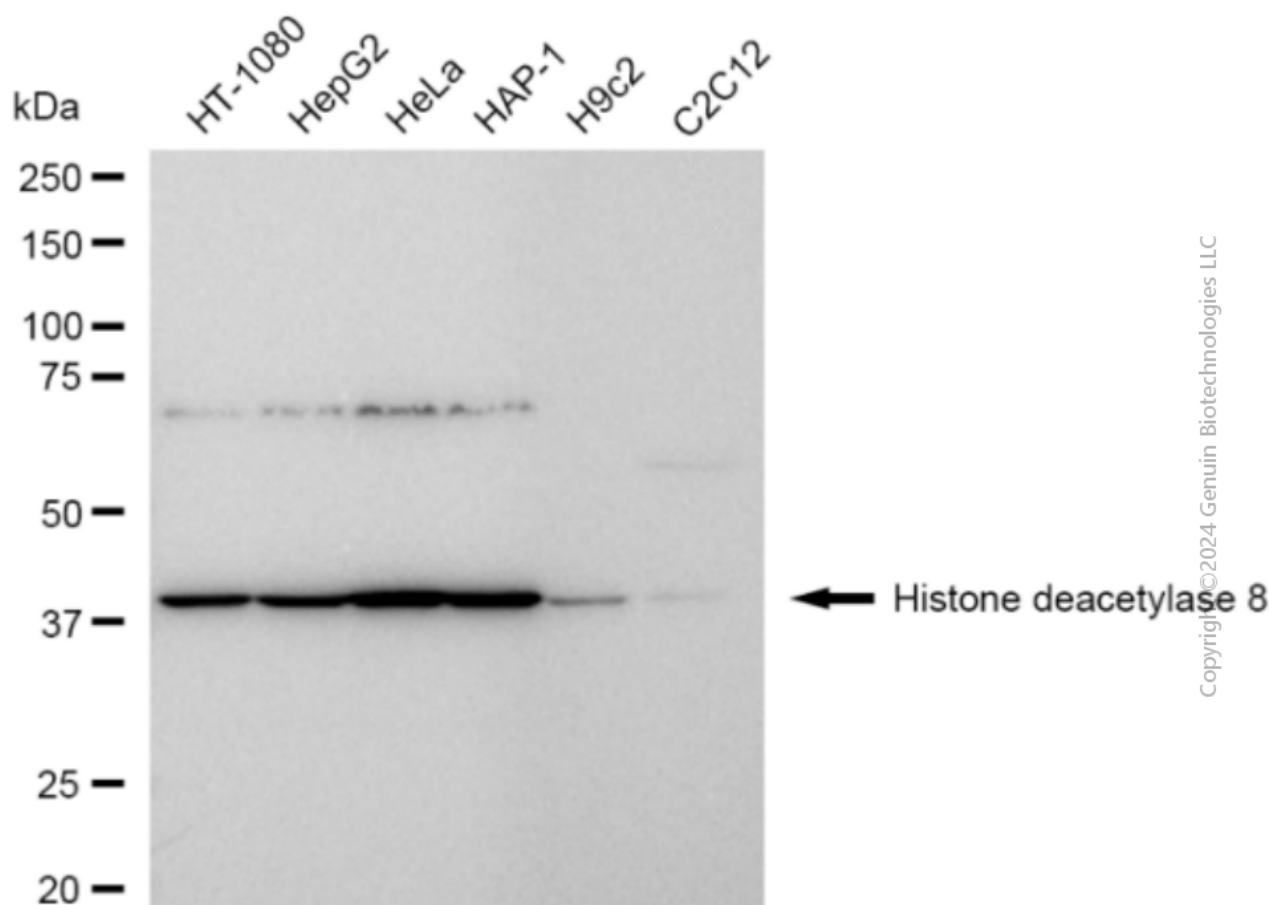
SALES@GENUINBIOTECH.COM
FAX: +1-540-855-7041

WWW.GENUINBIOTECH.COM

Anti-Histone deacetylase 8 Recombinant Rabbit Monoclonal Antibody

PAGE 3

based on laser Intensity and smart gain: High. Scale bar: 20 μ m.



Western blotting analysis using anti-Histone deacetylase 8 antibody (Cat#2139). Total cell lysates (30 μ g) from various cell lines were loaded and separated by SDS-PAGE. The blot was incubated with anti-Histone deacetylase 8 antibody (Cat#2139, 1:5,000) and HRP-conjugated goat anti-rabbit secondary antibody (Cat#201, 1:20,000) respectively. Image was developed using FeQ™ ECL Substrate Kit (Cat#226).

SUPPORT

SUPPORT@GENUINBIOTECH.COM
TEL: +1-540-855-7041

ORDERS

SALES@GENUINBIOTECH.COM
FAX: +1-540-855-7041

WWW.GENUINBIOTECH.COM