

# Anti-HSPB6 Recombinant Rabbit Monoclonal Antibody



**Catalog #: 2141**

## Aliases

HSPB6; Heat Shock Protein Family B (Small) Member 6; PPP1R91; Heat Shock Protein, Alpha-Crystallin-Related, B6; Protein Phosphatase 1, Regulatory Subunit 91; Heat Shock 20 KDa-Like Protein P20; Heat Shock Protein Beta-6; FLJ32389; Hsp20; Heat Shock Protein Family B (Small) Member B6; Epididymis Secretory Sperm Binding Protein; Epididymis Luminal Protein 55; HEL55; HSP20; HspB6

## Background

Gene Name: HSPB6

NCBI Gene Entry: [126393](#)

UniProt Entry: [O14558](#)

## Application Information

Molecular Weight: Predicted, 17 kDa; observed, 17 kDa

Clonality: Rabbit monoclonal antibody

Clone ID: 23GB6195

Species Reactivity: Mouse, rat

Applications Tested: Western blotting (WB), flow cytometry (FCM), immunocytochemistry (IC)

## Immunogen

A synthesized peptide derived from human Hsp20

## Isotype

Rabbit IgG

## Storage Buffer

Supplied in PBS (pH 7.4) containing 50% glycerol, and 0.02% sodium azide.

## Storage

Store at -20 °C for one year.

## Recommended Dilutions

Western Blotting (WB): 1:1,000-1:10,000

Flow Cytometry (FCM): 1:2,000

Immunocytochemistry (IC): 1:100-1:1,000

---

### SUPPORT

SUPPORT@GENUINBIOTECH.COM  
TEL: +1-540-855-7041

### ORDERS

SALES@GENUINBIOTECH.COM  
FAX: +1-540-855-7041

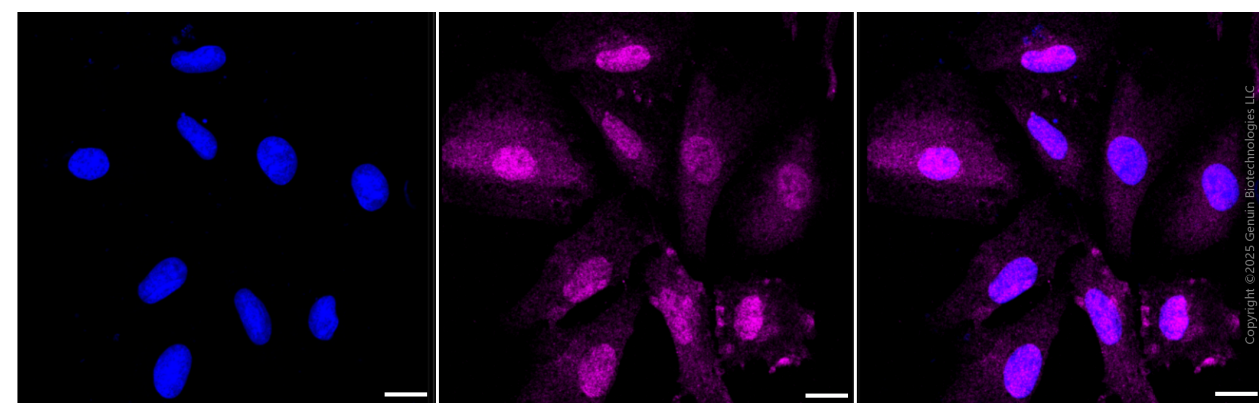
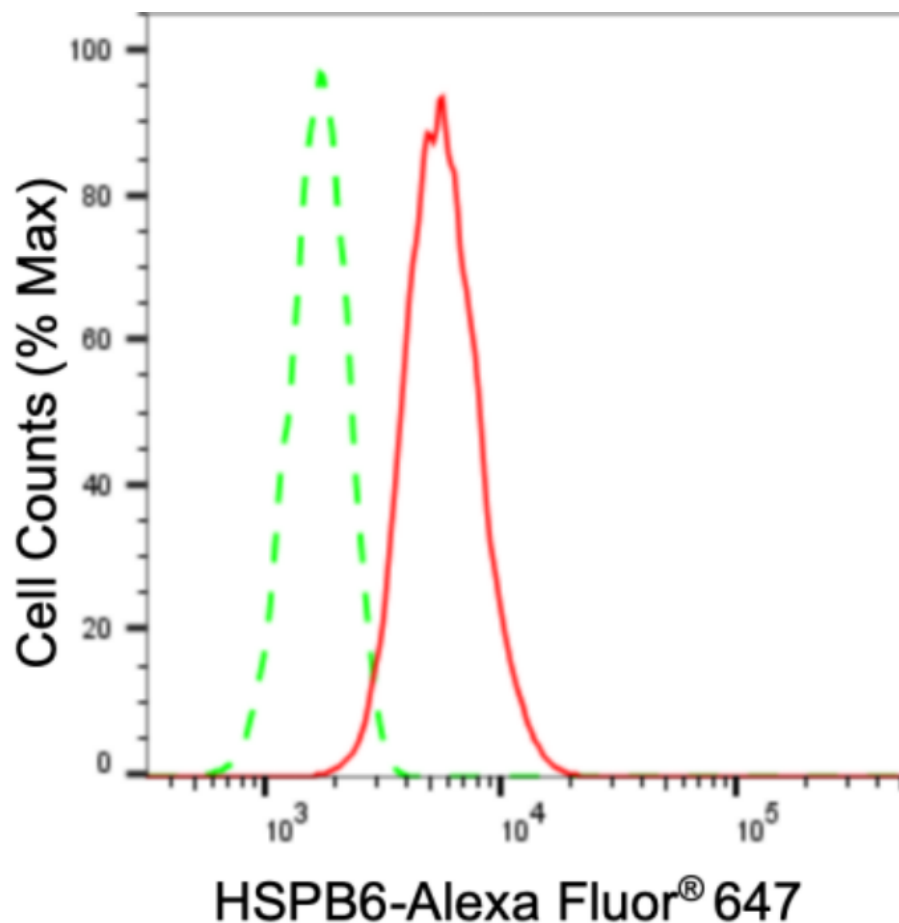
[WWW.GENUINBIOTECH.COM](http://WWW.GENUINBIOTECH.COM)

# Anti-HSPB6 Recombinant Rabbit Monoclonal Antibody

PAGE 2

**Note:** This product is for research use only.

## Validation Data



### SUPPORT

SUPPORT@GENUINBIOTECH.COM  
TEL: +1-540-855-7041

### ORDERS

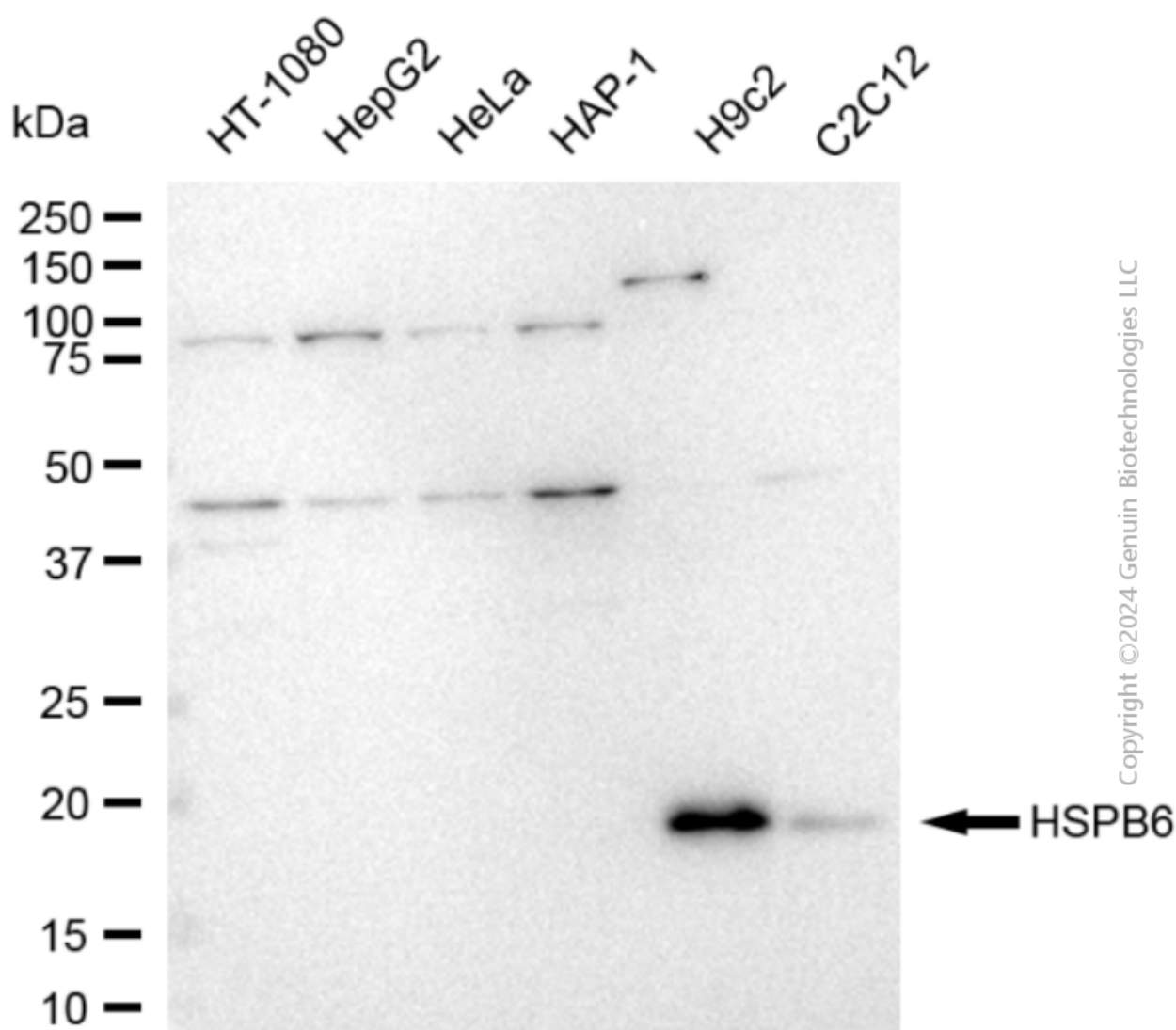
SALES@GENUINBIOTECH.COM  
FAX: +1-540-855-7041

[WWW.GENUINBIOTECH.COM](http://WWW.GENUINBIOTECH.COM)

## Anti-HSPB6 Recombinant Rabbit Monoclonal Antibody

PAGE 3

Medium. Scale bar, 20  $\mu$ m.



Western blotting analysis using anti-HSPB6 antibody (Cat#2141). Total cell lysates (30  $\mu$ g) from various cell lines were loaded and separated by SDS-PAGE. The blot was incubated with anti-HSPB6 antibody (Cat#2141, 1:10,000) and HRP-conjugated goat anti-rabbit secondary antibody (Cat#201, 1:20,000) respectively. Image was developed using FeQ™ ECL Substrate Kit (Cat#226).

### SUPPORT

SUPPORT@GENUINBIOTECH.COM  
TEL: +1-540-855-7041

### ORDERS

SALES@GENUINBIOTECH.COM  
FAX: +1-540-855-7041

WWW.GENUINBIOTECH.COM