

Anti-Insulin like growth factor 2 Recombinant Rabbit Monoclonal Antibody



Catalog #: 2143

Aliases

IGF2; Insulin Like Growth Factor 2; IGF-II; Insulin-Like Growth Factor II; T3M-11-Derived Growth Factor; FLJ44734; Preptin; Insulin-Like Growth Factor 2 (Somatomedin A); Chromosome 11 Open Reading Frame 43; Insulin-Like Growth Factor Type; Insulin-Like Growth Factor 2; Somatomedin A; Somatomedin-A; C11orf43; C11ORF43; PP9974; GRDF; SRS3

Background

Gene Name: IGF2

NCBI Gene Entry: [3481](#)

UniProt Entry: [P01344](#)

Application Information

Molecular Weight: Predicted, 20 kDa; observed, 20 kDa

Clonality: Rabbit monoclonal antibody

Clone ID: 23GB6205

Species Reactivity: Human, mouse, rat

Applications Tested: Western blotting (WB), flow cytometry (FCM)

Immunogen

A synthesized peptide derived from human IGF2

Isotype

Rabbit IgG

Storage Buffer

Supplied in PBS (pH 7.4) containing 50% glycerol, and 0.02% sodium azide.

Storage

Store at -20 °C for one year.

Recommended Dilutions

Western Blotting (WB): 1:1,000-1:5,000

Flow Cytometry (FCM): 1:2,000

Note: This product is for research use only.

SUPPORT

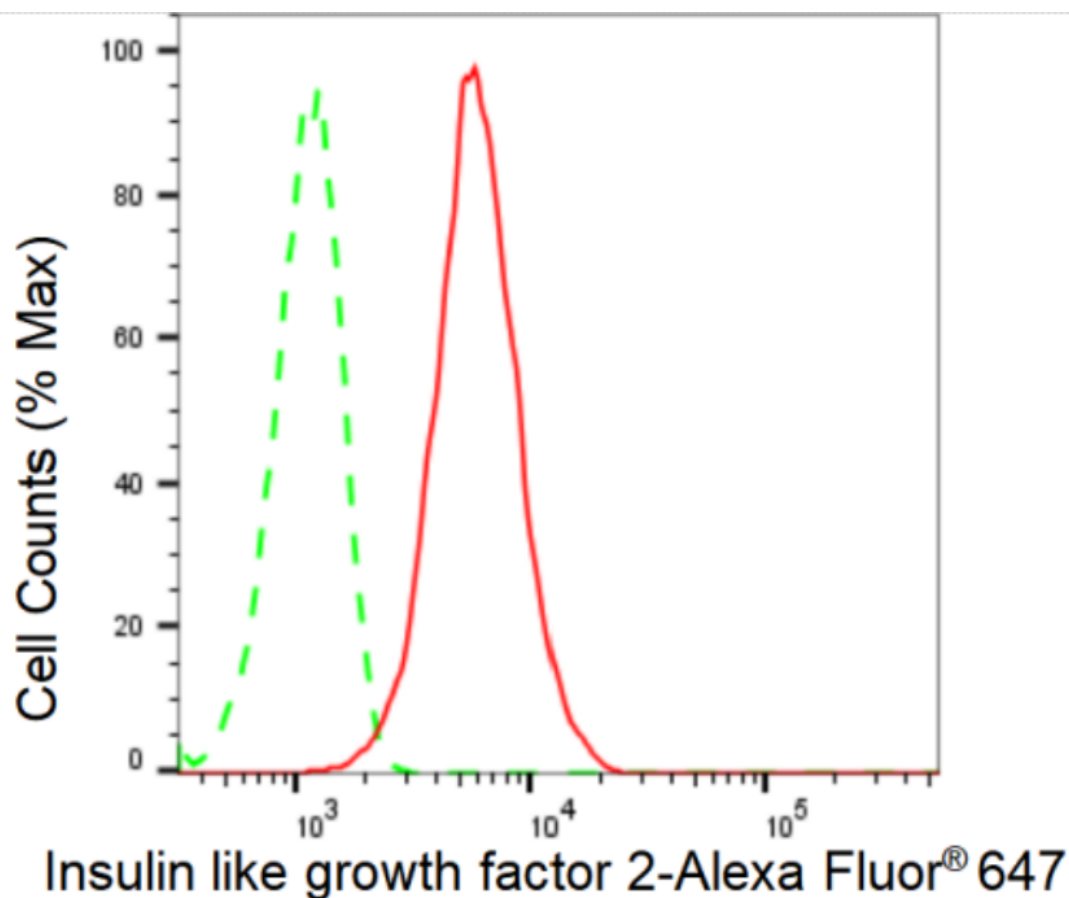
SUPPORT@GENUINBIOTECH.COM
TEL: +1-540-855-7041

ORDERS

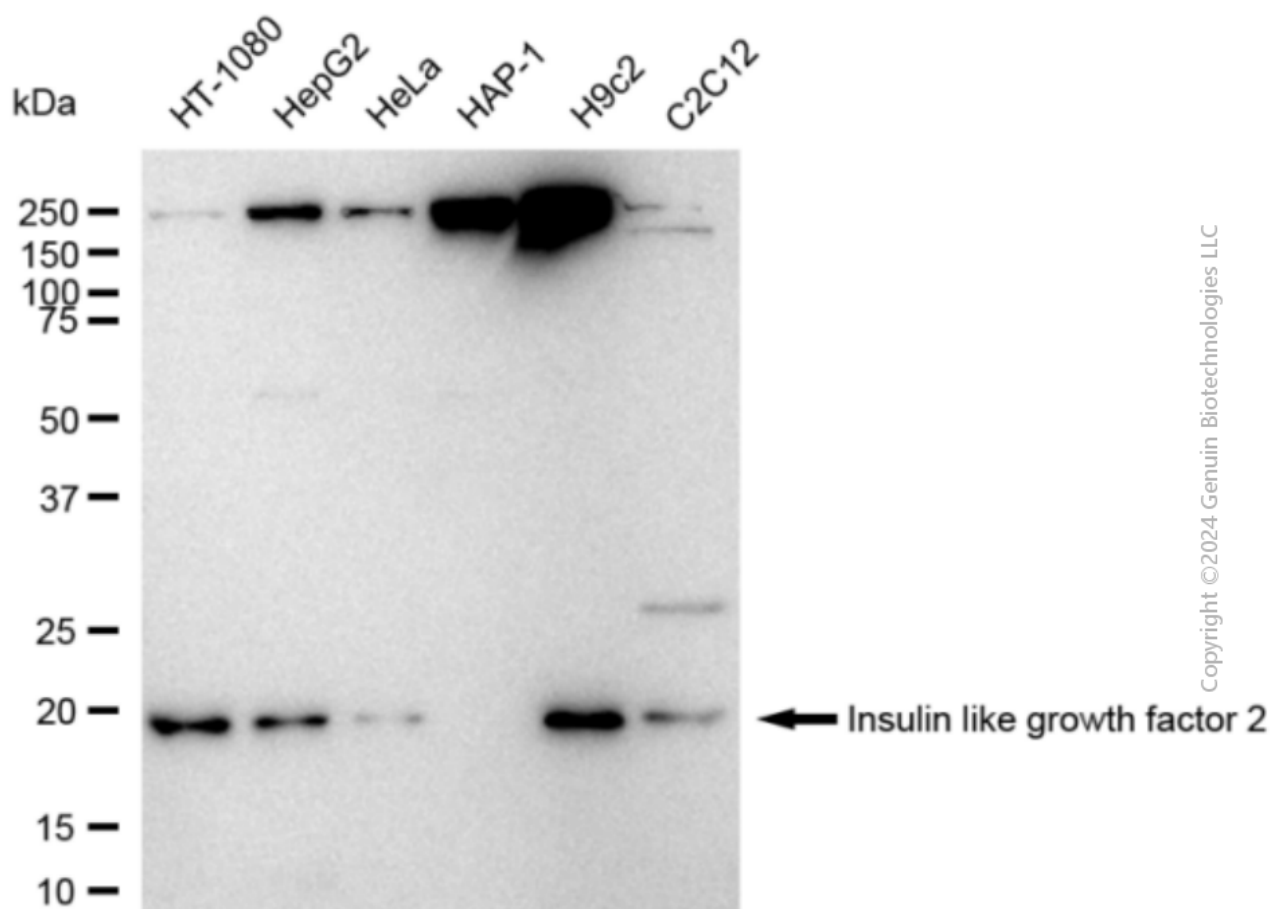
SALES@GENUINBIOTECH.COM
FAX: +1-540-855-7041

WWW.GENUINBIOTECH.COM

Validation Data



Flow cytometric analysis of Insulin like growth factor 2 expression in HT-1080 cells using Insulin like growth factor 2 antibody (Cat#2143, 1:2,000). Green, isotype control; red, Insulin like growth factor 2.



Western blotting analysis using anti-Insulin like growth factor 2 antibody (Cat#2143). Total cell lysates (30 µg) from various cell lines were loaded and separated by SDS-PAGE. The blot was incubated with anti-Insulin like growth factor 2 antibody (Cat#2143, 1:5,000) and HRP-conjugated goat anti-rabbit secondary antibody (Cat#201, 1:20,000) respectively. Image was developed using FeQ™ ECL Substrate Kit (Cat#226).