

Anti-HLA G Recombinant Rabbit Monoclonal Antibody



Catalog #: 2147

Aliases

HLA-G; Major Histocompatibility Complex, Class I, G; HLA Class I Histocompatibility Antigen, Alpha Chain G; HLA-G Histocompatibility Antigen, Class I, G; MHC Class I Antigen G; B2 Microglobulin; HLA G Antigen; Mutant MHC Class Ib Antigen; Mutant MHC Class I Antigen; MHC Class Ib Antigen; MHC Class I Protein; HLA-6.0; MHC-G; HLAG

Background

Gene Name: HLA-G

NCBI Gene Entry: [3135](#)

UniProt Entry: [P17693](#)

Application Information

Molecular Weight: Predicted, 38 kDa; observed, 42 kDa

Clonality: Rabbit monoclonal antibody

Clone ID: 23GB6225

Species Reactivity: Human, mouse

Applications Tested: Western blotting (WB), immunocytochemistry (IC)

Immunogen

A synthesized peptide derived from human HLA G

Isotype

Rabbit IgG

Storage Buffer

Supplied in PBS (pH 7.4) containing 50% glycerol, and 0.02% sodium azide.

Storage

Store at -20 °C for one year.

Recommended Dilutions

Western Blotting (WB): 1:1,000-1:5,000

Immunocytochemistry (IC): 1:100-1:1,000

Note: This product is for research use only.

SUPPORT

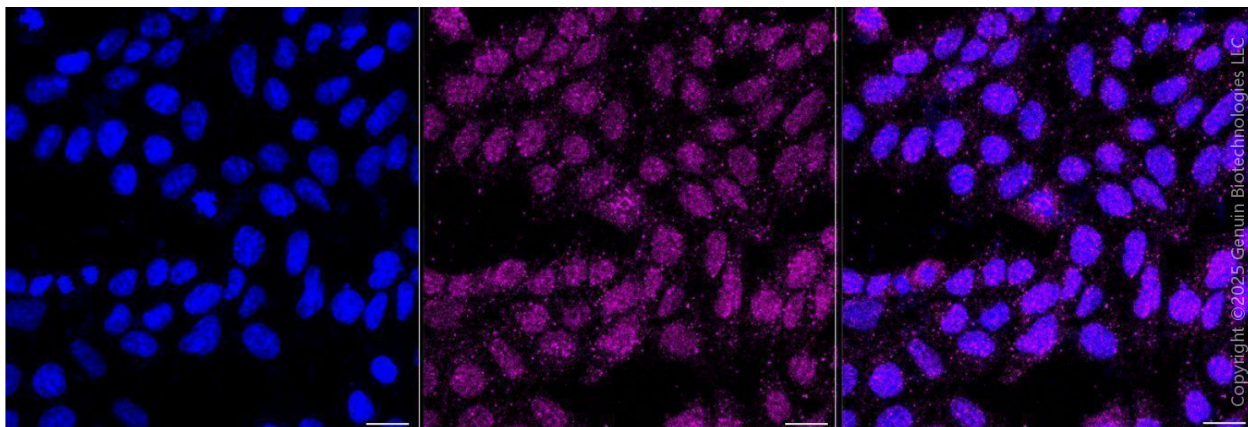
SUPPORT@GENUINBIOTECH.COM
TEL: +1-540-855-7041

ORDERS

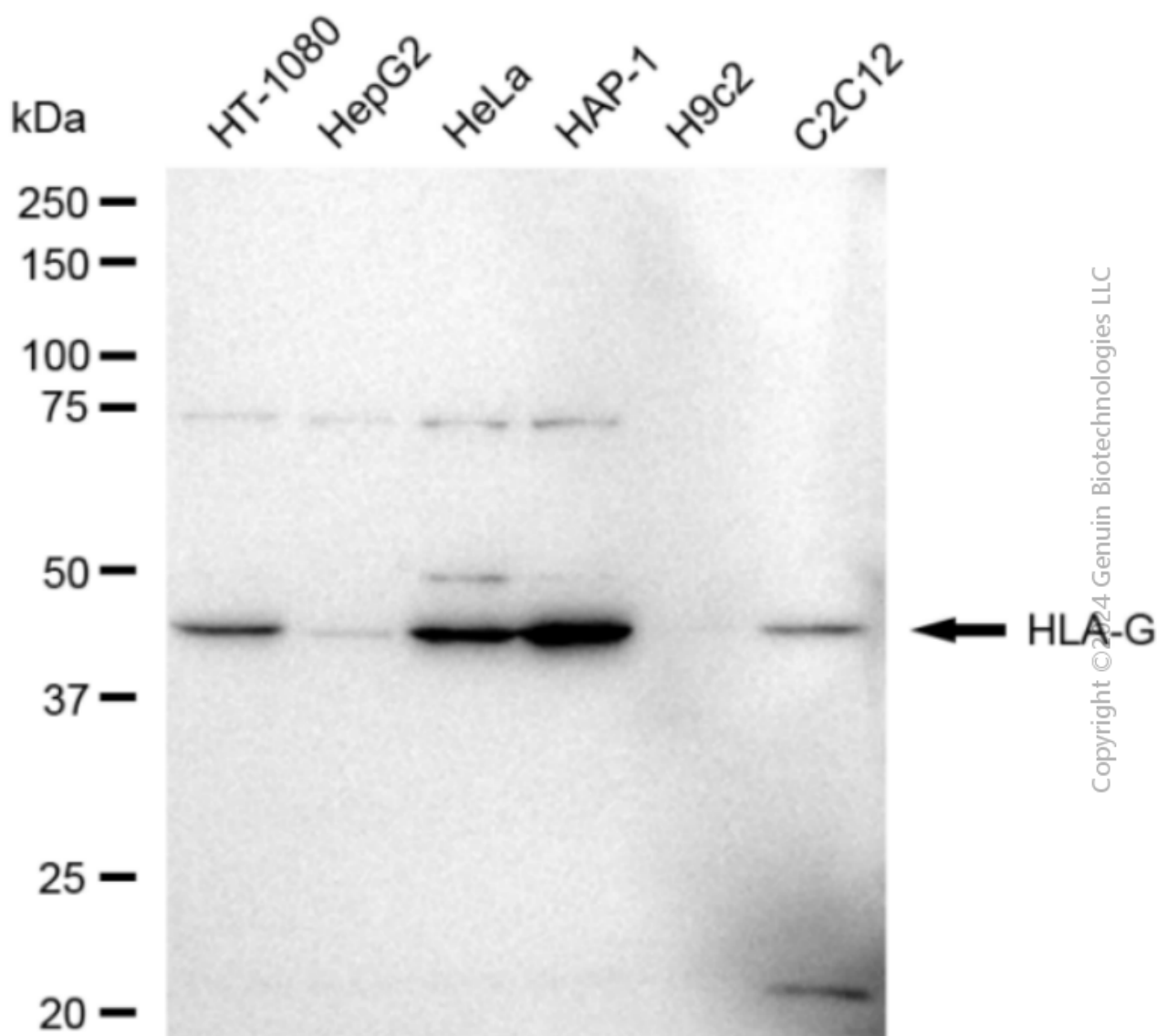
SALES@GENUINBIOTECH.COM
FAX: +1-540-855-7041

WWW.GENUINBIOTECH.COM

Validation Data



Immunocytochemical staining of HAP-1 cells with anti-HLA-G antibody (Cat#2147, 1:1,000) . Nuclei were stained blue with DAPI; HLA-G was stained magenta with Alexa Fluor® 647. Images were taken using Leica stellaris 5. Protein abundance based on laser Intensity and smart gain: Medium. Scale bar, 20 μ m.



Western blotting analysis using anti-HLA-G antibody (Cat#2147). Total cell lysates (30 µg) from various cell lines were loaded and separated by SDS-PAGE. The blot was incubated with anti-HLA-G antibody (Cat#2147, 1:5,000) and HRP-conjugated goat anti-rabbit secondary antibody (Cat#201, 1:20,000) respectively. Image was developed using FeQ™ ECL Substrate Kit (Cat#226).

SUPPORT

SUPPORT@GENUINBIOTECH.COM
TEL: +1-540-855-7041

ORDERS

SALES@GENUINBIOTECH.COM
FAX: +1-540-855-7041

WWW.GENUINBIOTECH.COM