

Anti-MHC class I Recombinant Rabbit Monoclonal Antibody



Catalog #: 2149

Aliases

HLA-B; Major Histocompatibility Complex, Class I, B; HLA Class I Histocompatibility Antigen, B Alpha Chain; HLAB; AS; MHC Class I Antigen HLA-B Alpha Chain; MHC Class I Antigen HLA-B Heavy Chain; MHC HLA-B Transmembrane Glycoprotein; MHC HLA-B Cell Surface Glycoprotein; Leukocyte Antigen Class I-B; HLA Class I Antigen HLA-B; MHC Class I Antigen SHCHA; Human Leukocyte Antigen B; Ankylosing Spondylitis; MHC Class I Molecule; MHC Class 1 Antigen; B-4901

Background

Gene Name: HLA-B

NCBI Gene Entry: [3106](#)

UniProt Entry: [P01889](#)

Application Information

Molecular Weight: Predicted, 41 kDa; observed, 41 kDa

Clonality: Rabbit monoclonal antibody

Clone ID: 23GB6235

Species Reactivity: Human

Applications Tested: Western blotting (WB), flow cytometry (FCM), immunocytochemistry (IC)

Immunogen

A synthesized peptide derived from human MHC class I

Isotype

Rabbit IgG

Storage Buffer

Supplied in PBS (pH 7.4) containing 50% glycerol, and 0.02% sodium azide.

Storage

Store at -20 °C for one year.

Recommended Dilutions

Western Blotting (WB): 1:1,000-1:5,000

Flow Cytometry (FCM): 1:2,000

Immunocytochemistry (IC): 1:100-1:1,000

SUPPORT

SUPPORT@GENUINBIOTECH.COM
TEL: +1-540-855-7041

ORDERS

SALES@GENUINBIOTECH.COM
FAX: +1-540-855-7041

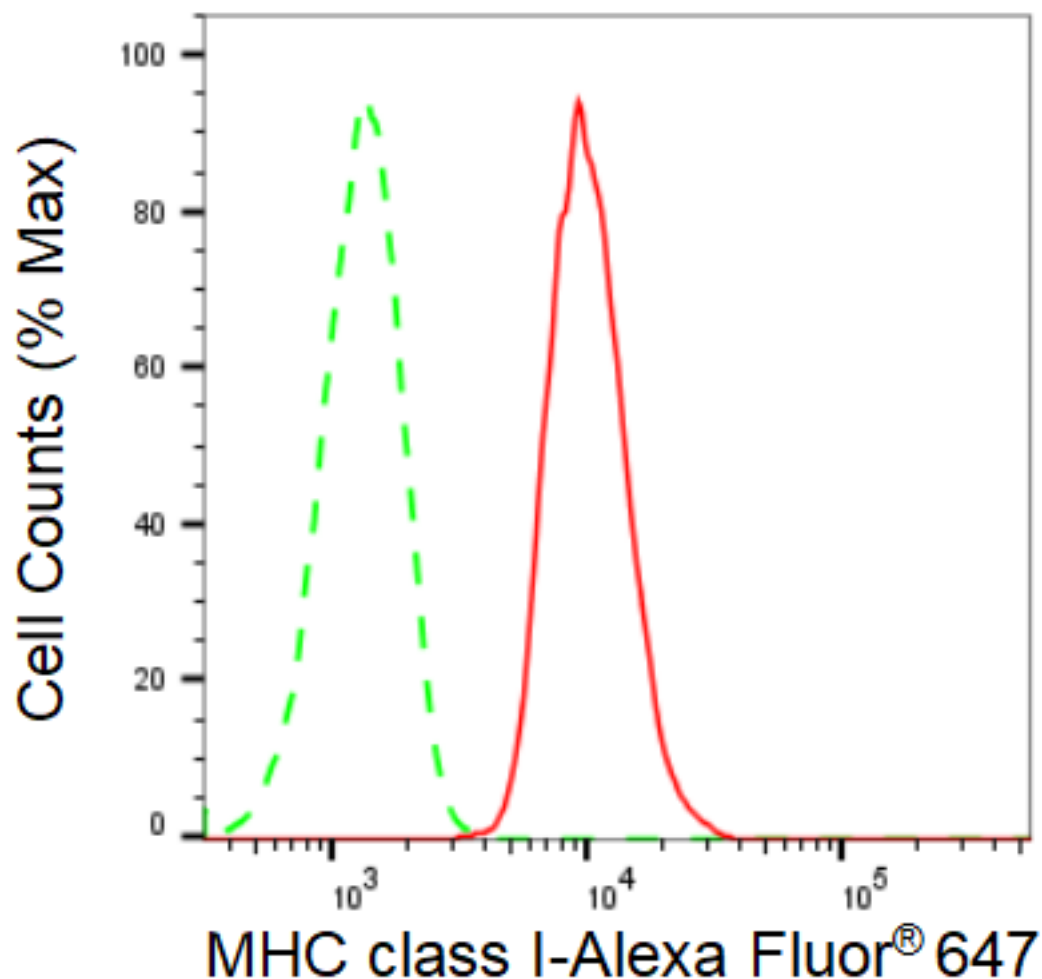
WWW.GENUINBIOTECH.COM

Anti-MHC class I Recombinant Rabbit Monoclonal Antibody

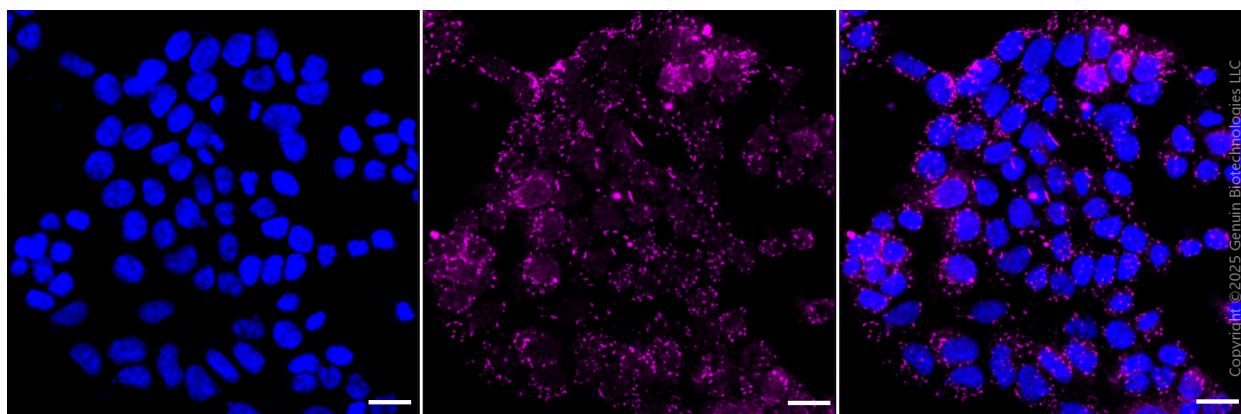
PAGE 2

Note: This product is for research use only.

Validation Data



Flow cytometric analysis of MHC class I expression in HAP-1 cells using anti-MHC class I antibody (Cat#2149, 1 μ g/2000). Green, isotype control; red, MHC class I.



SUPPORT

SUPPORT@GENUINBIOTECH.COM
TEL: +1-540-855-7041

ORDERS

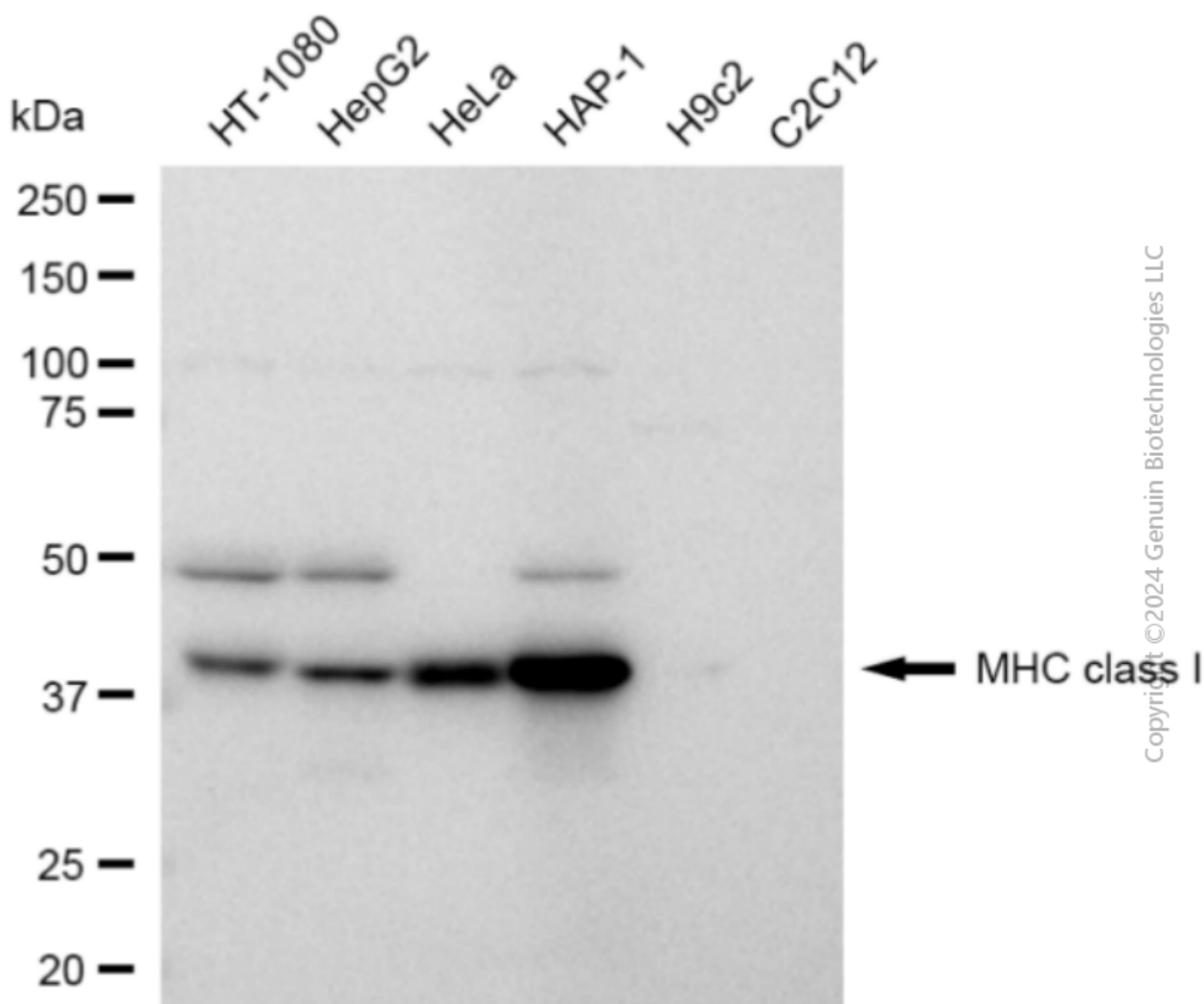
SALES@GENUINBIOTECH.COM
FAX: +1-540-855-7041

WWW.GENUINBIOTECH.COM

Anti-MHC class I Recombinant Rabbit Monoclonal Antibody

PAGE 3

Immunocytochemical staining of HAP1 cells with anti-MHC class I antibody (Cat #2149, 1:1,000). Nuclei were stained blue with DAPI; MHC class I was stained magenta with Alexa Fluor® 647. Images were taken using Leica stellaris 5. Protein abundance based on laser Intensity and smart gain: High. Scale bar, 20 µm.



Western blotting analysis using anti-MHC class I antibody (Cat#2149). Total cell lysates (30 µg) from various cell lines were loaded and separated by SDS-PAGE. The blot was incubated with anti-MHC class I antibody (Cat#2149, 1:5,000) and HRP-conjugated goat anti-rabbit secondary antibody (Cat#201, 1:20,000) respectively. Image was developed using FeQ™ ECL Substrate Kit (Cat#226).

SUPPORT

SUPPORT@GENUINBIOTECH.COM
TEL: +1-540-855-7041

ORDERS

SALES@GENUINBIOTECH.COM
FAX: +1-540-855-7041

WWW.GENUINBIOTECH.COM